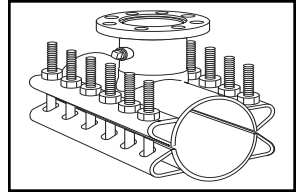


SUBMITTAL INFORMATION

Steel Tapping Sleeve - (FTS-xxxx style)



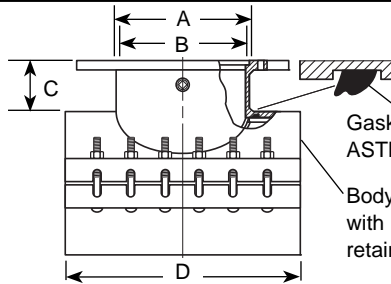
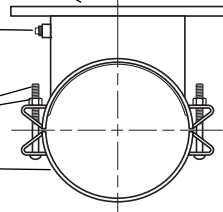
STEEL TAPPING SLEEVE - 16" TO 30"

Flange - ASTM A36 Carbon Steel - Flat face, recessed for standard tapping valve.

3/4-14 Steel Test Plug

Bolts and Nuts - High strength, low alloy

Finish - Shop coat base for field coatings.



Gasket - Buna-N (Nitrile) ASTM D2000 BA508.

Body - Heavy welded steel with recessed groove to retain gasket.

NOM PIPE SIZE	SLEEVE OD RANGE	FLANGE SIZE CODE	NOMINAL DIMENSIONS - INCHES				No. OF BOLTS	APPROX WEIGHT LBS.	SLEEVE NUMBER	✓SUBMITTED ITEM(S)
			A	B	C	D				
16"	17.33-17.87	4	5-1/32	4-1/4	5-3/16	12	3	110	FTS-1787-	
		6	7-1/32	6-5/16	5-3/16	12	3	118		
	17.88-18.43	8	9-1/32	8-1/4	5-3/16	16	8	168	FTS-1843-	
		10	11-1/32	10-1/4	5-3/16	20	10	208		
	18.46-19.03	12	13-1/32	12-1/4	5-3/16	24	12	265	FTS-1903-	
		14	15-9/32	13-1/2	6-1/4	28	14	330		
18.87-19.45	16	17-9/32	15-1/2	6-1/4	32	16	378	FTS-1945-		
18"	19.41-20.01	4	5-1/32	4-1/4	5-3/16	12	6	120	FTS-2001-	
		6	7-1/32	6-5/16	5-3/16	12	6	128		
	19.88-20.48	8	9-1/32	8-1/4	5-3/16	16	8	180	FTS-2048-	
		10	11-1/32	10-1/4	5-3/16	20	10	222		
	20.29-20.92	12	13-1/32	12-1/4	5-3/16	24	12	282	FTS-2092-	
		14	15-9/32	13-1/2	6-1/4	28	14	350		
20.93-21.57	16	17-9/32	15-1/2	6-1/4	32	16	415	FTS-2157-		
20"	21.51-22.15	18	19-1/2	17-1/2	6-1/4	36	18	460	FTS-2215-	
		4	5-1/32	4-1/4	5-3/16	12	6	128		
	22.16-22.81	6	7-1/32	6-5/16	5-3/16	12	6	133	FTS-2281-	
		8	9-1/32	8-1/4	5-3/16	16	8	195		
	23.46-24.16	10	11-1/32	10-1/4	5-3/16	20	10	235	FTS-2416-	
		12	13-1/32	12-1/4	5-3/16	24	12	300		
24.82-25.52	14	15-9/32	13-1/2	6-1/4	28	14	400	FTS-2552-		
	16	17-9/32	15-1/2	6-1/4	32	16	492			
24"	25.71-26.41	18	19-1/2	17-1/2	6-1/4	36	18	530	FTS-2641-	
		20	21-1/2	19-1/2	6-1/4	40	20	555		
	26.55-27.25	4	5-1/32	4-1/4	5-3/16	12	6	144	FTS-2725-	
		6	7-1/32	6-5/16	5-3/16	12	6	152		
	27.26-27.96	8	9-1/32	8-1/4	5-3/16	16	8	220	FTS-2796-	
		10	11-1/32	10-1/4	5-3/16	20	10	262		
28.14-28.84	12	13-1/32	12-1/4	5-3/16	24	12	330	FTS-2884-		
	14	15-9/32	13-1/2	6-1/4	28	14	420			
30"	29.78-30.48	16	17-9/32	15-1/2	6-1/4	32	16	495	FTS-3048-	
		18	19-1/2	17-1/2	6-1/4	36	18	550		
	30.48-31.18	20	21-1/2	19-1/2	6-1/4	40	20	610	FTS-3118-	
		24	25-1/2	23-1/2	6-1/4	48	24	740		
	31.52-32.22	4	5-1/32	4-1/4	5-3/16	12	6	162	FTS-3222-	
		6	7-1/32	6-5/16	5-3/16	12	6	168		
	8	9-1/32	8-1/4	5-3/16	16	8	222			
	10	11-1/32	10-1/4	5-3/16	20	10	283			
	12	13-1/32	12-1/4	5-3/16	24	12	350			
	16	17-19/64	15-1/2	6-1/4	32	16	520			
	18	19-1/2	18-3/16	6-1/4	36	18	550			

***To Order:** Add flange size to the sleeve number. Example: A 16" flange on 24" cast iron pipe would be FTS-2641-16. For stainless steel nuts and bolts option, add "-SH" to the catalog number. Example: FTS-2641-16-SH.

Note: A 1" undersize cutter is required for flanges 14" and larger. Oversize outlets are available by special request.

FEATURES

- Heavy welded steel meeting ASTM A36 36,000 psi minimum yield
- Bolts and nuts are made of high strength, low alloy per ASTM A242 and AWWA C111
- Ring style gasket is Buna-N (Nitrile) ASTM D2000 BA508
- UL Classified to ANSI/NSF Standard 61

The Ford Meter Box Company considers the information in this submittal form to be correct at the time of publication. Item and option availability, including specifications, are subject to change without notice. Please verify that your product information is current.



The Ford Meter Box Company, Inc.

P.O. Box 443, Wabash, Indiana U.S.A. 46992-0443

Phone: 260-563-3171 / Fax: 800-826-3487

Overseas Fax: 260-563-0167

www.fordmeterbox.com

09/08/15

Submitted By: