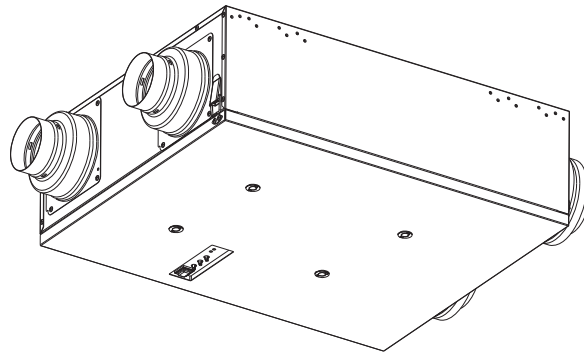


# Service Manual

Energy Recovery Ventilator  
(North America Market)

FV-10VEC2  
FV-10VE2



## ⚠ WARNING

This service information is designed for experienced repair technicians only and is not designed for use by the general public. It does not contain warnings or cautions to advise non-technical individuals of potential dangers in attempting to service a product. Products powered by electricity should be serviced or repaired only by experienced professional technicians. Any attempt to service or repair the product or products dealt with in this service information by anyone else could result in serious injury or death.

## IMPORTANT SAFETY NOTICE

There are special components used in this equipment which are important for safety. These parts are marked by ⚠ in the Schematic Diagrams, Exploded Views and Replacement Parts List. It is essential that these critical parts should be replaced with manufacturer's specified parts to prevent shock, fire or other hazards. Do not modify the original design without permission of manufacture. We suggest to handle such parts after the static electricity prevention. It is forbidden to touch the PCB parts by bare hands during the repairing process.

CONTENTS	PAGE
1.Specifications .....	1
2.Parts Identification .....	2~11
3.Wiring Diagram .....	12
4.Parts List .....	13~18

# 1. Specifications

## <Ventilation Performance>

Model No.	Air direction	Voltage (V)	Frequency (Hz)	Duct	Static pressure	Net air flow (CFM)		Power consumption (W)	Weight lb.(kg)
						Exhaust	Supply	Fan unit	
FV-10VEC2	Exhaust & Supply	120	60	4"/6"	0.1"WG	100	100	81	50 (22.4)
					0.4"WG	100	100	90	
FV-10VE2	Exhaust & Supply	120	60	4"/6"	0.1"WG	100	100	81	48 (21.6)
					0.4"WG	100	100	90	

## <Energy Performance>

Model No.	Mode	Supply temperature		Net air flow		Power consumption (W)	Sensible recovery efficiency	Apparent sensible effectiveness	Net moisture transfer
		°F	°C	L/s	CFM				
FV-10VEC2	Heating	32	0	25	53	29	81%	84%	0.81
		32	0	31	66	39	77%	81%	0.75
		32	0	40	85	68	75%	80%	0.74
		-13	-25	27	57	77	64%	67%	0.73
		-13	-25	30	64	100	56%	60%	0.64
	Cooling	Total recovery efficiency							
	95	35	23	49	32	60%			
	95	35	31	66	42	55%			

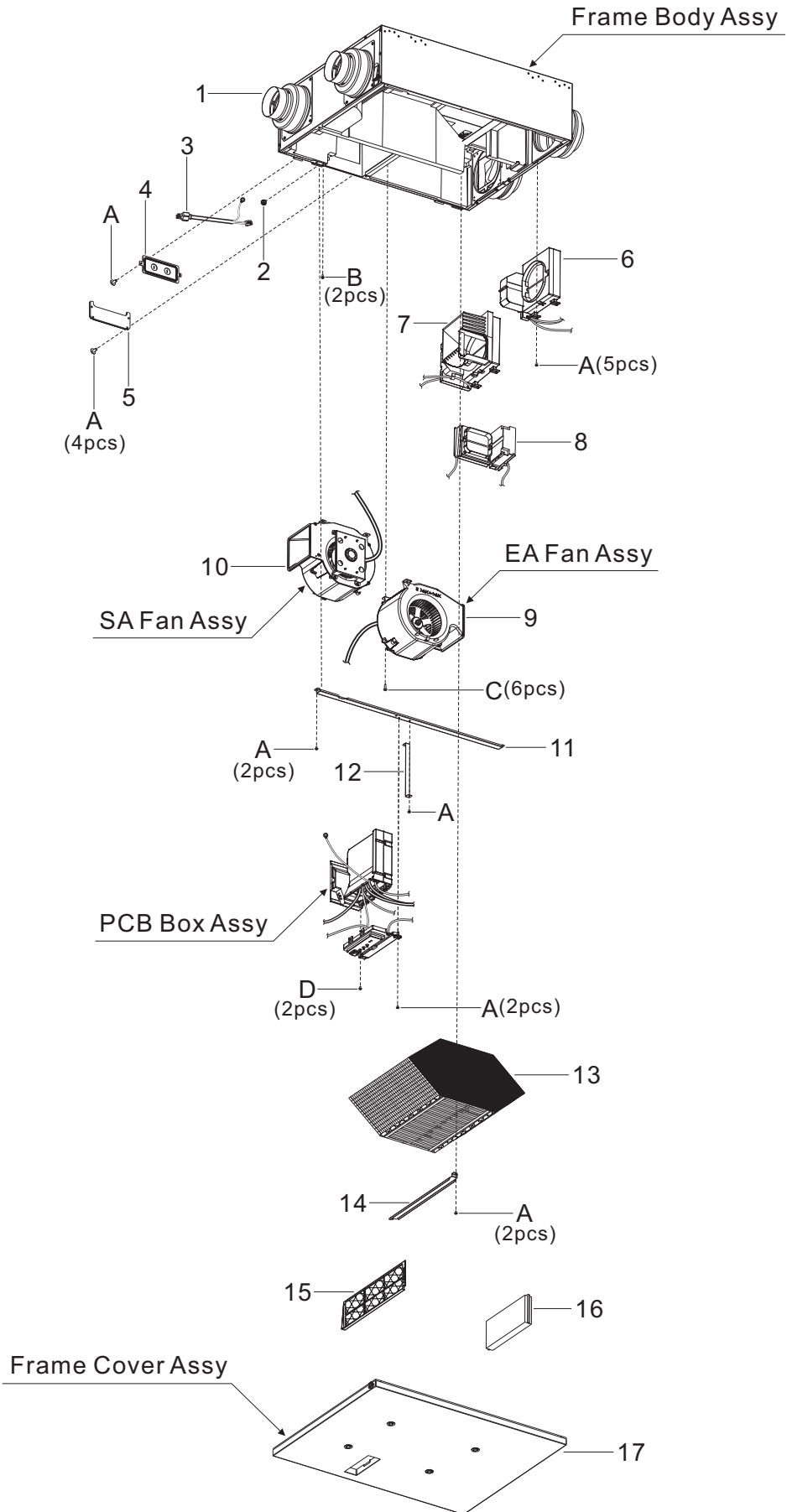
Model No.	Mode	Supply temperature		Net air flow		Power consumption (W)	Sensible recovery efficiency	Apparent sensible effectiveness	Net moisture transfer
		°F	°C	L/s	CFM				
FV-10VE2	Heating	32	0	25	53	29	81%	84%	0.81
		32	0	31	66	39	77%	81%	0.75
		32	0	40	85	68	75%	80%	0.74
	Cooling	Total recovery efficiency							
		95	35	23	49	32	60%		
		95	35	31	66	42	55%		

The testing of the ventilation performance and the energy performance in accordance with CSA-C439 standard.

# 2. Parts Identification

FV-10VEC2

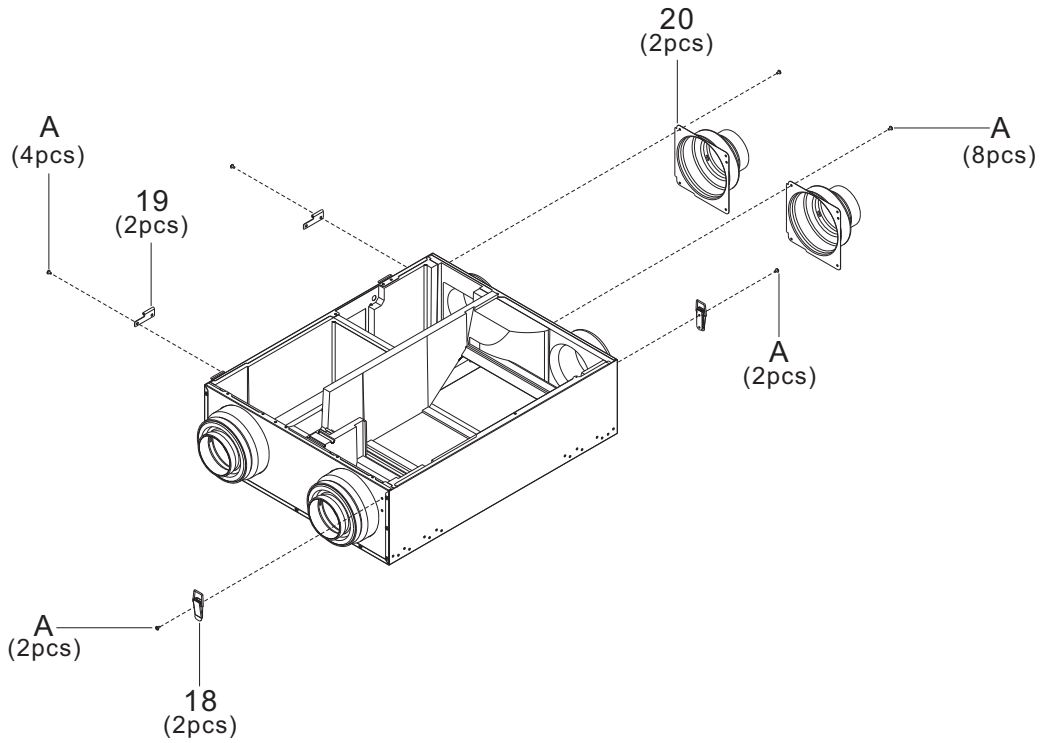
## Main Body Section



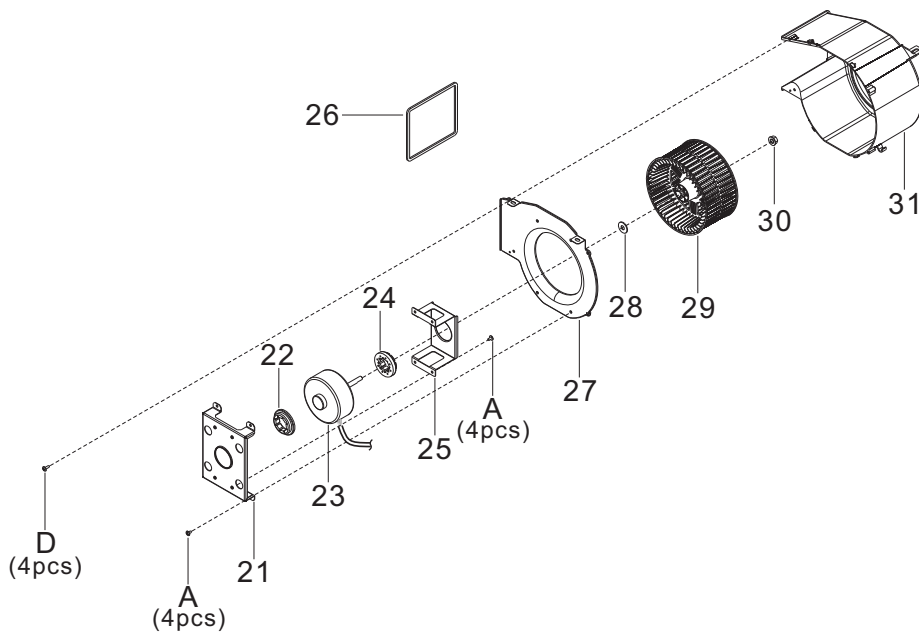
## 2. Parts Identification

FV-10VEC2

### Frame Body Assy



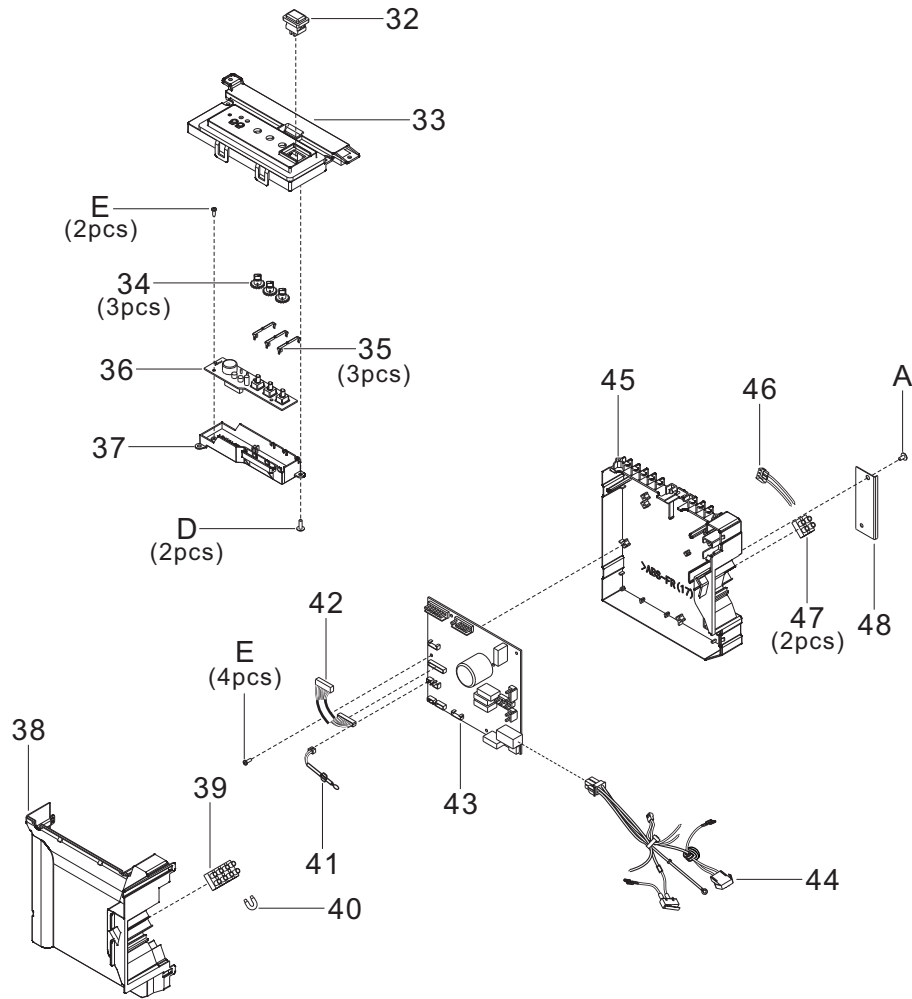
### SA Fan Assy/EA Fan Assy



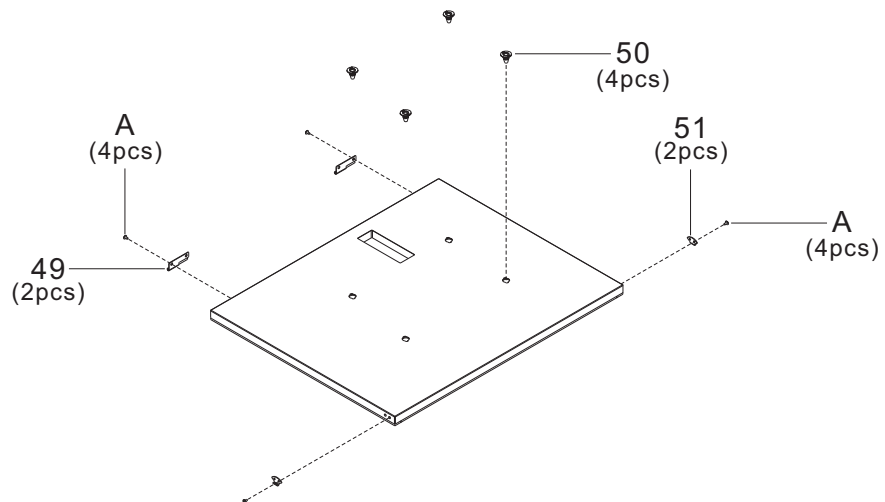
## 2. Parts Identification

FV-10VEC2

### PCB Box Assy



### Frame Cover Assy



# 2. Parts Identification

FV-10VEC2

## Main Labels

**CAUTION**

- Electric shock may result. Disconnect power by switching off main switch first, then unplug the power plug before working on unit when it is in default mode. (Fig.1)
- Electric shock may result. Disconnect power by switching off wall switch first, then main switch and unplug the power plug before working on unit when replacing the jumper cable with wall switch.
- The installation direction should refer to Fig.2 (power cord upward) when wall mounting.
- Routine maintenance must be performed every 2 or 3 months, clogged filters may cause condensation on the unit due to air flow reduction.
- Please wear gloves to avoid pinching fingers during maintenance.
- Please pay attention to dust, condensation water or parts that may drop down when the cover is opened.

**MAINTENANCE PROCEDURE**

- Open the frame cover by unlocking the latches. If not convenient for maintenance you also can turn the lock plate 90° and remove the frame cover. (Fig.3)
- Remove OA filter and RA filter to clean with vacuum cleaner. (Fig.4)
- Clean energy recovery core with vacuum cleaner. (Fig.5)
- Replace the OA and RA filters. Make sure the RA filter adapts to the convex and the direction of the arrow on the OA filter is in the same direction as the air flow displayed on the nearby label. (Fig.6)
- Reinstall and close frame cover by locking the latches then reset the lock plate. (Fig.7)
- Connect power, press filter reset button with sound of "Pi-" then filter indicator and buzzer sound will be off. (Fig.8)

**ATTENTION**

- Risque de choc électrique. Coupez l'alimentation avec l'interrupteur principal d'abord, puis débranchez la fiche d'alimentation avant de travailler sur l'appareil lorsqu'il est en mode par défaut. (Fig.1)
- Risque de choc électrique. Coupez l'alimentation avec l'interrupteur mural d'abord, puis l'interrupteur principal et débranchez la fiche d'alimentation avant de travailler sur l'appareil pour remplacer la connexion temporaire par un interrupteur mural.
- Le sens d'installation doit se rapporter à la Fig.2 (cordon d'alimentation orienté vers le haut) lors de la fixation murale.
- Une maintenance périodique doit être réalisée tous les 2 à 3 mois, car des filtres obstrués peuvent entraîner de la condensation dans l'unité à cause de la réduction du flux d'air.
- Veillez porter des gants pour éviter de vous pincer les doigts pendant la maintenance.
- Veillez faire attention à la poussière, à la condensation ou aux pièces qui pourraient tomber lorsque vous ouvrez le couvercle.

**PROCÉDURE DE MAINTENANCE**

- Ouvrez le couvercle en déverrouillant les verrous. Si cela n'est pas pratique pour la maintenance, vous pouvez également tourner la plaque de verrouillage à 90° et retirer le couvercle. (Fig.3)
- Enlevez les filtres AA et AR pour les nettoyer avec un aspirateur. (Fig.4)
- Nettoyez le noyau de récupération avec un aspirateur. (Fig.5)
- Remplacez les filtres AA et AR. Assurez-vous que le filtre AR s'adapte au convexe et que le sens de la flèche sur le filtre AA est dans la direction du flux d'air affiché sur l'étiquette juste à côté. (Fig.6)
- Reinstallez le couvercle puis verrouillez les verrous et fermez la plaque de verrouillage. (Fig.7)
- Branchez l'appareil, appuyez sur le bouton de réinitialisation, un bip "Pi-" se fait entendre, le voyant du filtre et le son sont désactivés. (Fig.8)

Volume (CFM) Débit (pi³/min)	Fresh (Pa) Frais	Stale (Pa) Vieille
50	35	45
60	45	60
70	60	80
80	75	105
90	100	140
100	115	190

← Outside air  
Amenée d'air

→ Exhaust air  
Air d'évacuation

53

← Supply air  
Air fourni

→ Return air  
Air recyclé

54

WALL SWITCH  
INTERRUPTEUR MURAL

BOOST SWITCH  
BOOST MURAL

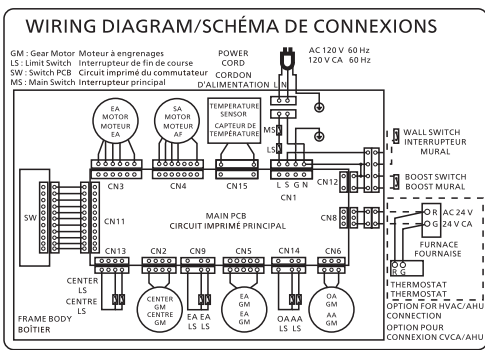
HVAC / AHU  
CVCA / AHU

55

56

57

58



**Panasonic**  
Energy Recovery Ventilator  
Ventilateur récupérateur d'énergie

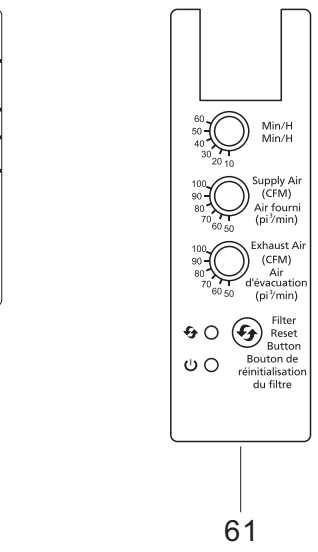
Model No. FV-10VEC2

120 V- 60 Hz 1.90 A

Ser. No. \_\_\_\_\_

Panasonic Corporation of North America  
Made in China/Fabrique en Chine

- FOR RESIDENTIAL INSTALLATION ONLY  
POUR L'INSTALLATION À DOMICILE  
UNIQUEMENT
- Electronically Protected  
Protection électronique
- Use Copper Conductors Only  
Utilisez uniquement des conducteurs en cuivre
- Not for Outdoor Use  
Ne pas utiliser à l'extérieur



**WARNING**  
ELECTRICAL CORDS CAN BE  
HAZARDOUS

- Misuse Can Result in Fire or Death;
- Cord Shall be Secured Out of the Way;
- Avoid Overheating.Uncoil Cord and Do Not Cover it With Any Material;
- Do not Walk on Cord;

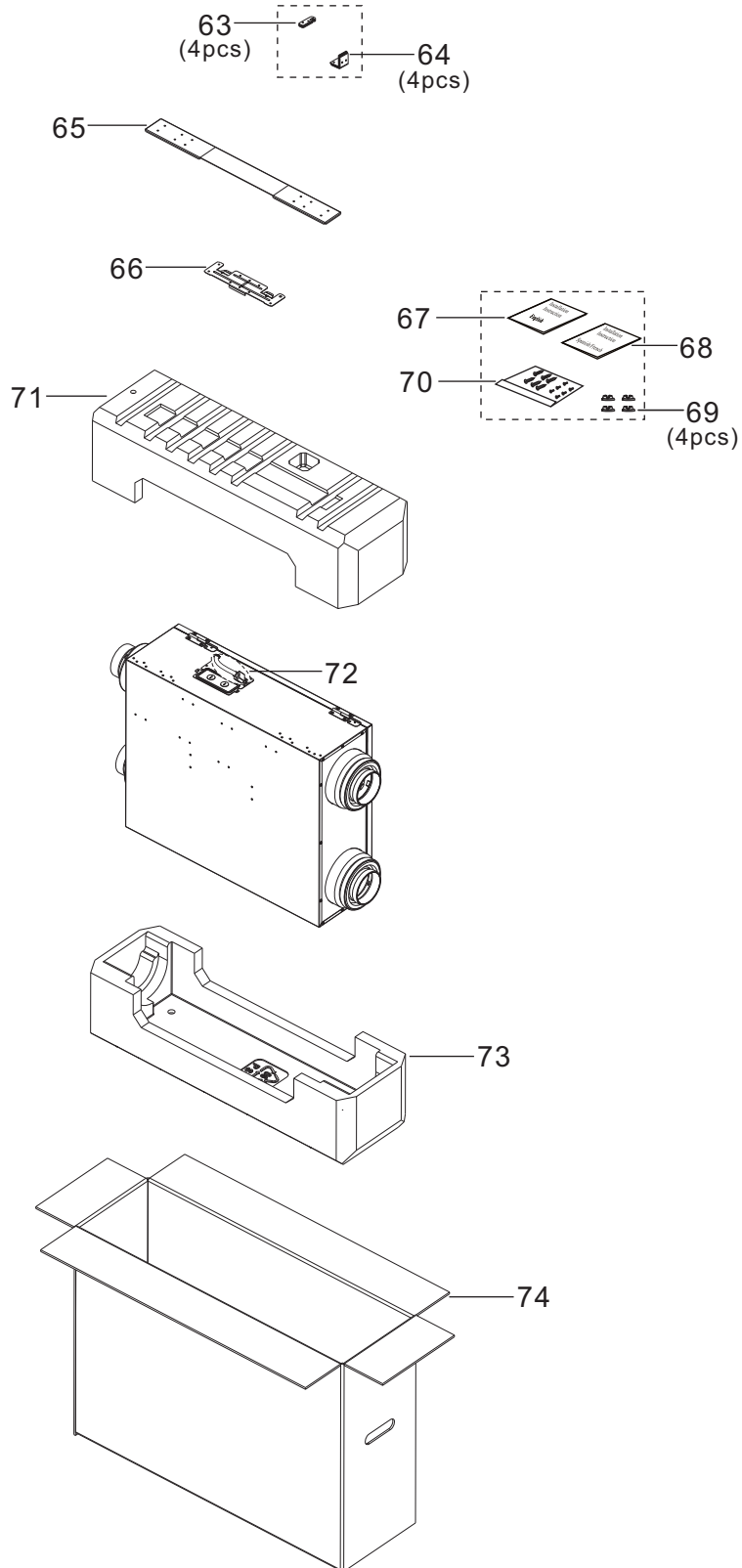
**AVERTISSEMENT**  
LES CORDONS ELECTRIQUES  
PEUVENT ETRE DANGEREUX

- Une mauvaise utilisation peut causer un incendie ou la mort;
- Le cordon doit être bien fixé à l'abri du passage ;
- Évitez la surchauffe.Déroulez le cordon et ne le couvrez pas avec d'autres matériaux ;
- Ne marchez pas sur le cordon ;

## 2. Parts Identification

FV-10VEC2

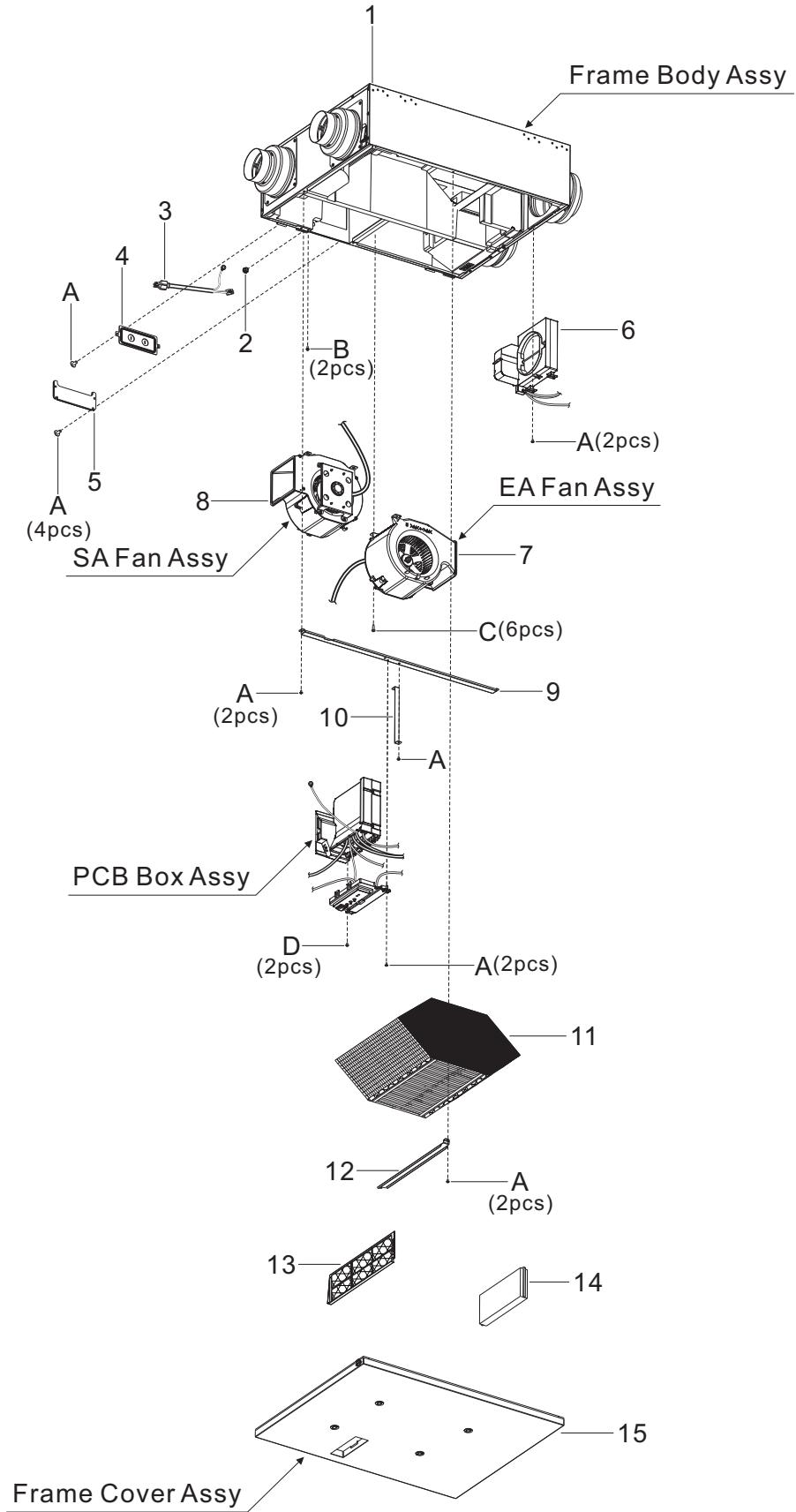
### Packing Case Assy



# 2. Parts Identification

FV-10VE2

## Main Body Section

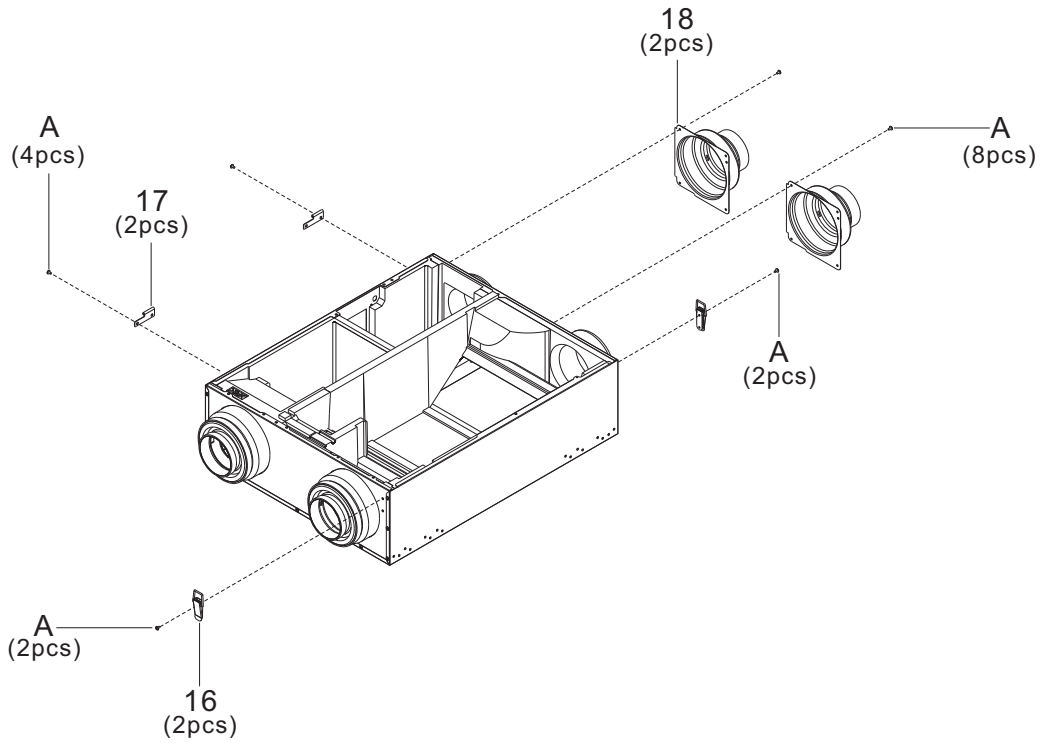




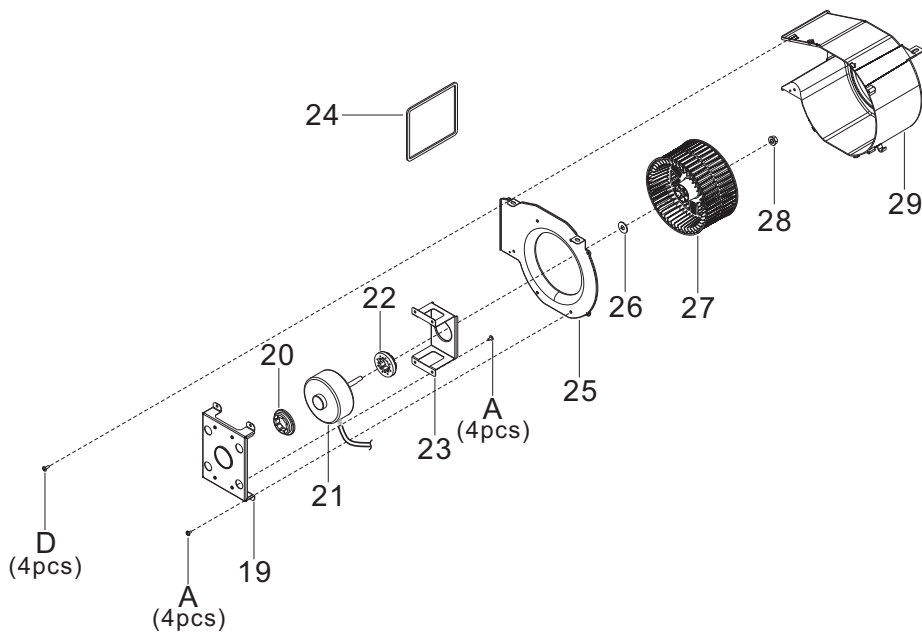
## 2. Parts Identification

FV-10VE2

### Frame Body Assy



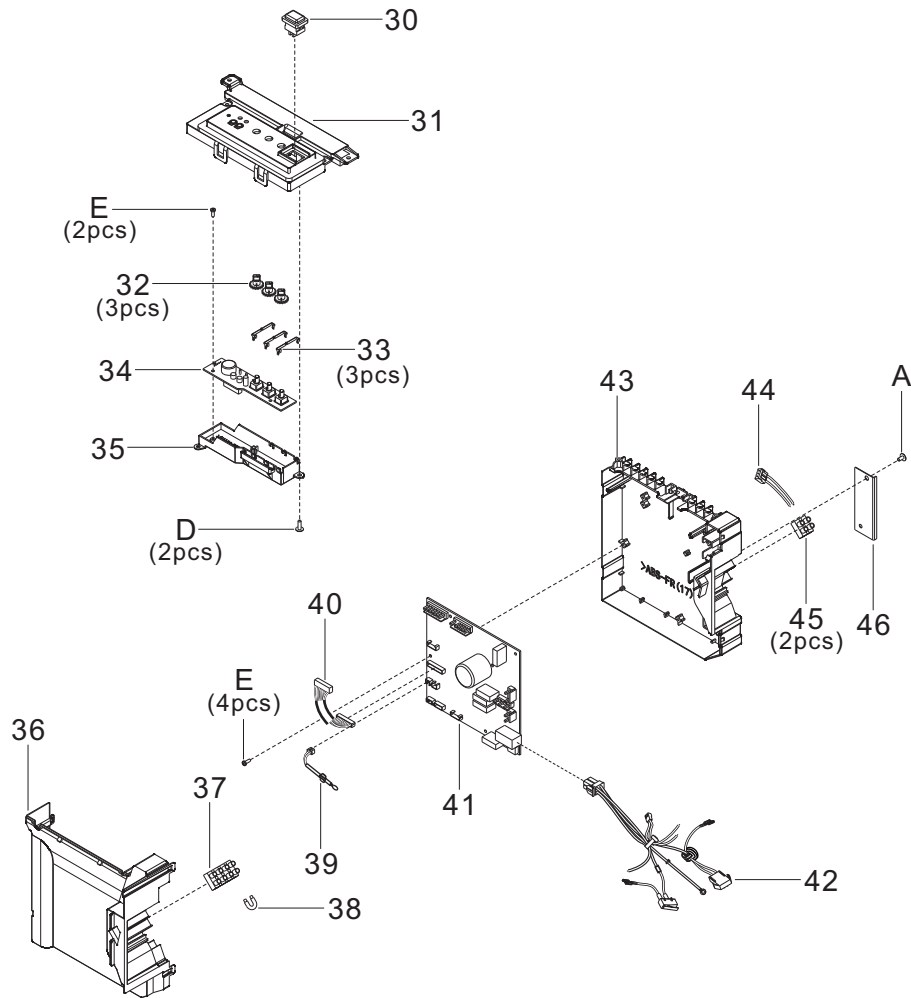
### SA Fan Assy/EA Fan Assy



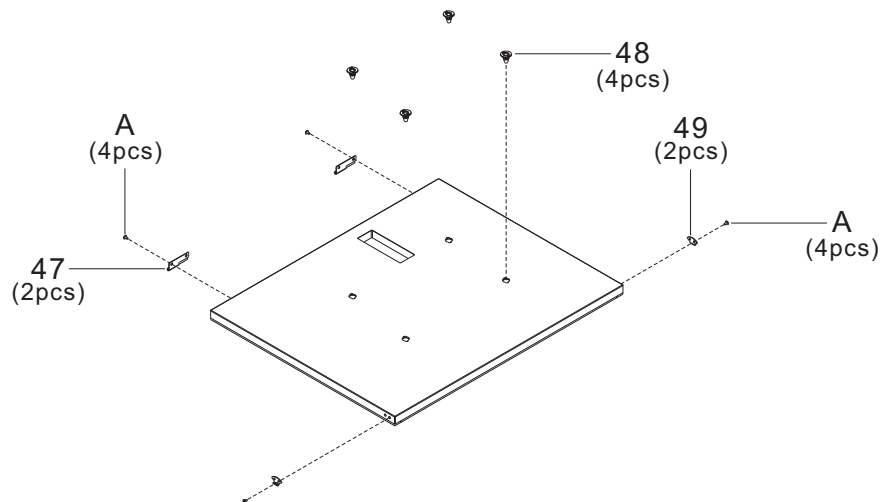
## 2. Parts Identification

FV-10VE2

### PCB Box Assy



### Frame Cover Assy



# 2. Parts Identification

FV-10VE2

## Main Labels

**CAUTION**

- Electric shock may result. Disconnect power by switching off main switch first, then unplug the power plug before working on unit when it is in default mode. (Fig.1)
- Electric shock may result. Disconnect power by switching off wall switch first, then main switch and unplug the power plug before working on unit when replacing the jumper cable with wall switch.
- The installation direction should refer to Fig.2 (power cord upward) when wall mounting.
- Routine maintenance must be performed every 2 or 3 months, clogged filters may cause condensation on the unit due to air flow reduction.
- Please wear gloves to avoid pinching fingers during maintenance.
- Please pay attention to dust, condensation water or parts that may drop down when the cover is opened.

**MAINTENANCE PROCEDURE**

- Open the frame cover by unlocking the latches. If not convenient for maintenance you also can turn the lock plate 90° and remove the frame cover. (Fig.3)
- Remove OA filter and RA filter to clean with vacuum cleaner. (Fig.4)
- Clean energy recovery core with vacuum cleaner. (Fig.5)
- Replace the OA and RA filters. Make sure the RA filter adapts to the convex and the direction of the arrow on the OA filter is in the same direction as the air flow displayed on the nearby label. (Fig.6)
- Reinstall and close frame cover by locking the latches then reset the lock plate. (Fig.7)
- Connect power, press filter reset button with sound of "Pi-" then filter indicator and buzzer sound will be off. (Fig.8)

**ATTENTION**

- Risque de choc électrique. Coupez l'alimentation avec l'interrupteur principal d'abord, puis débranchez la fiche d'alimentation avant de travailler sur l'appareil lorsqu'il est en mode par défaut. (Fig.1)
- Risque de choc électrique. Coupez l'alimentation avec l'interrupteur mural d'abord, puis l'interrupteur principal et débranchez la fiche d'alimentation avant de travailler sur l'appareil pour remplacer la connexion temporaire par un interrupteur mural.
- Le sens d'installation doit se rapporter à la Fig.2 (cordon d'alimentation orienté vers le haut) lors de la fixation murale.
- Une maintenance périodique doit être réalisée tous les 2 à 3 mois, car des filtres obstrués peuvent entraîner de la condensation dans l'unité à cause de la réduction du flux d'air.
- Veillez porter des gants pour éviter de vous pincer les doigts pendant la maintenance.
- Veillez faire attention à la poussière, à la condensation ou aux pièces qui pourraient tomber lorsque vous ouvrez le couvercle.

**PROCÉDURE DE MAINTENANCE**

- Ouvrez le couvercle en déverrouillant les verrous. Si cela n'est pas pratique pour la maintenance, vous pouvez également tourner la plaque de verrouillage à 90° et retirer le couvercle. (Fig.3)
- Enlevez les filtres AA et AR pour les nettoyer avec un aspirateur. (Fig.4)
- Nettoyez le noyau de récupération avec un aspirateur. (Fig.5)
- Remplacez les filtres AA et AR. Assurez-vous que le filtre AR s'adapte au convexe et que le sens de la flèche sur le filtre AA est dans la direction du flux d'air affiché sur l'étiquette juste à côté. (Fig.6)
- Reinstallez le couvercle puis verrouillez les verrous et fermez la plaque de verrouillage. (Fig.7)
- Branchez l'appareil, appuyez sur le bouton de réinitialisation, un bip "Pi-" se fait entendre, le voyant du filtre et le son sont désactivés. (Fig.8)

Volume (CFM) Débit (pi³/min)	Fresh (Pa) Frais		Stale (Pa) Vieille	
	FV-10VEC2	FV-10VE2	FV-10VEC2	FV-10VE2
50	35	35	45	70
60	45	45	60	95
70	60	60	80	120
80	75	70	105	155
90	100	80	140	195
100	115	95	190	225

← Outside air  
Amenée d'air

Exhaust air  
Air d'évacuation →

50

← Supply air  
Air fourni

Return air  
Air recyclé →

51

← Supply air  
Air fourni

Return air  
Air recyclé →

52

WALL SWITCH  
INTERRUPTEUR MURAL

BOOST SWITCH  
BOOST MURAL

HVAC / AHU  
CVCA / AHU

53

WALL SWITCH  
INTERRUPTEUR MURAL

BOOST SWITCH  
BOOST MURAL

HVAC / AHU  
CVCA / AHU

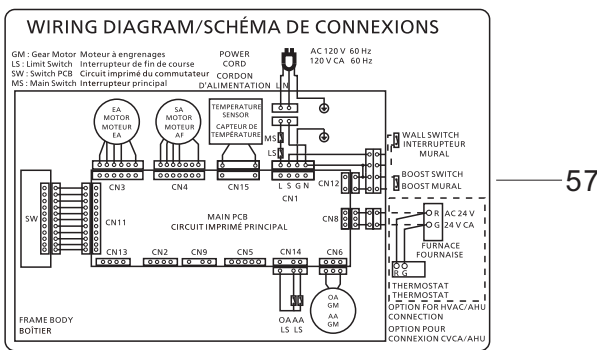
54

⏻

TESTED/CERTIFIED  
2100  
Home Ventilation Institute

55

56



**Panasonic**  
Energy Recovery Ventilator  
Ventilateur récupérateur d'énergie

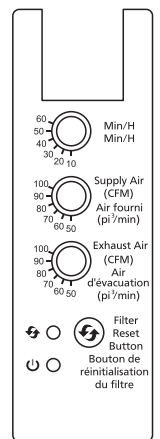
Model No. FV-10VE2

120 V~ 60 Hz 1.70 A

Ser. No. [ ]

Panasonic Corporation of North America  
Made in China/Fabrique en Chine

- FOR RESIDENTIAL INSTALLATION ONLY  
POUR L'INSTALLATION À DOMICILE UNIQUEMENT
- Electronically Protected  
Protection électronique
- Use Copper Conductors Only  
Utilisez uniquement des conducteurs en cuivre
- Not for Outdoor Use  
Ne pas utiliser à l'extérieur



**WARNING**  
ELECTRICAL CORDS CAN BE HAZARDOUS

- Misuse Can Result in Fire or Death;
- Cord Shall be Secured Out of the Way;
- Avoid Overheating. Uncoil Cord and Do Not Cover It With Any Material;
- Do not Walk on Cord;

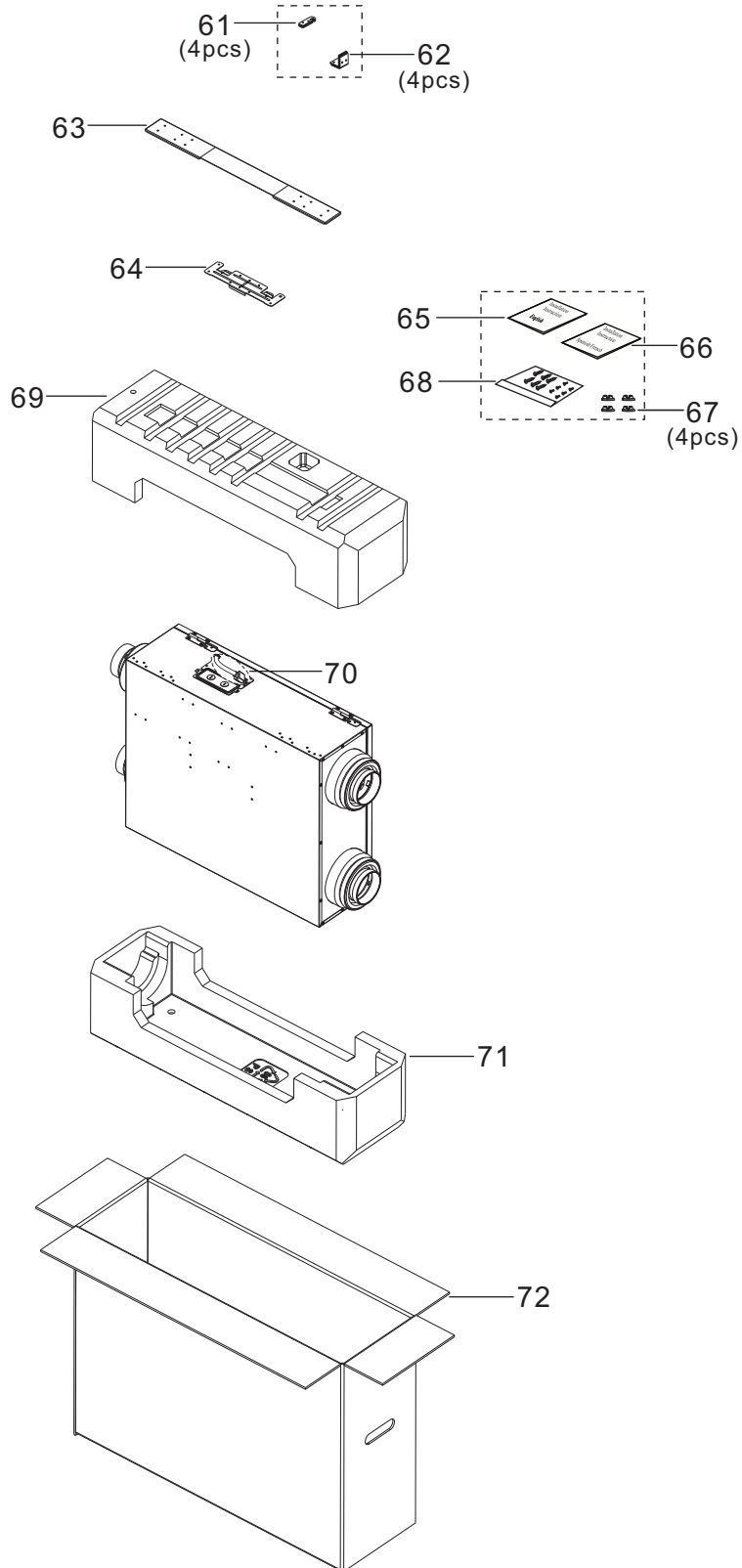
**AVERTISSEMENT**  
LES CORDONS ELECTRIQUES PEUVENT ETRE DANGEREUX

- Une mauvaise utilisation peut causer un incendie ou la mort;
- Le cordon doit être bien fixé à l'abri du passage;
- Évitez la surchauffe. Déroulez le cordon et ne le couvrez pas avec d'autres matériaux;
- Ne marchez pas sur le cordon;

## 2. Parts Identification

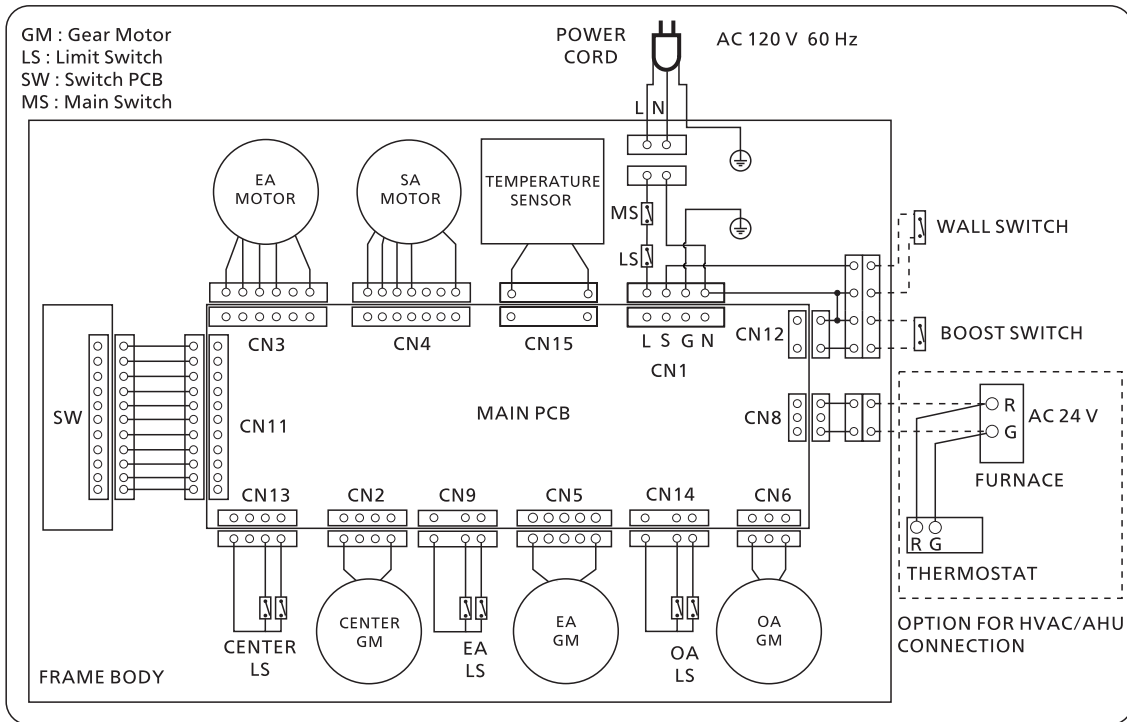
FV-10VE2

### Packing Case Assy

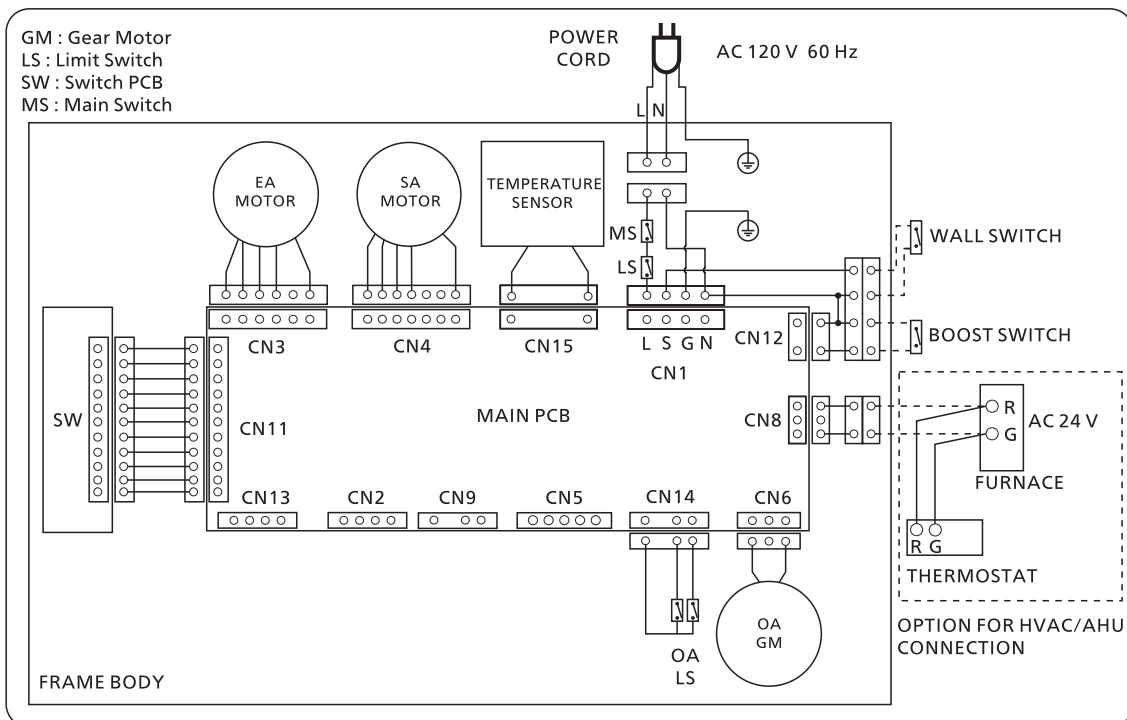


### 3. Wiring diagram

FV-10VEC2



FV-10VE2



## 4. Parts List

FFV-10VEC2

### Main Body Section

No.	Part No.	Part Name	Q'ty	Remark
1	FFV1600174S	Frame Body Assy	1	
2	FFV0720012S	Cord Bushing	1	
3	FFV4620115S	Power Cord	1	⚠
4	FFV6710047S	Wiring Cover	1	
5	FFV3740038S	Maintenance Plate	1	
6	FFV4300151S	OA Damper Assy	1	Include Temperature Sensor ⚠
7	FFV3402188S	EA Damper Assy	1	⚠
8	FFV4710448S	Center Damper Assy	1	⚠
9	FFV3402189S	EA Fan Assy	1	⚠
10	FFV3702280S	SA Fan Assy	1	⚠
11	FFV1600153S	Frame Bracket Assy	1	
12	FFV1600154S	Frame Bracket Hook	1	
13	FFV3402190S	Element Assy	1	
14	FFV3402191S	Element Holder	1	
15	FFV6730102S	RA Filter	1	
16	FFV4300152S	OA Filter M8	1	Merv 8
(16)	FFV4300157S	OA Filter M13	1	Merv 13
17	FFV1600175S	Frame Cover Assy	1	
A	FFV7000074S	Truss Tap Screw	17	
B	FFV7030008S	Pan Screw	2	⚠
C	FFV7000224S	PS Screw	6	
D	FFV7000089S	Truss Tap Screw	2	

### Frame Body Assy

No.	Part No.	Part Name	Q'ty	Remark
18	FFV3440021S	Latch	2	
19	FFV2220075S	Hinge B	2	
20	FFV0000163S	Adapter	2	
A	FFV7000074S	Truss Tap Screw	16	

### SA Fan Assy/EA Fan Assy

No.	Part No.	Part Name	Q'ty	Remark
21	FFV3730127S	Motor Holder Plate	1	
22	FFV2230022S	Holder Gum(B)	1	
23	FFV3402192S	EA Motor Assy	1	⚠
(23)	FFV3702281S	SA Motor Assy	1	⚠
24	FFV2230023S	Holder Gum(A)	1	
25	FFV3730128S	Motor Holder	1	
26	FFV4710408S	Casing Packing	1	
27	FFV3730129S	Motor Base	1	

## 4. Parts List

FFV-10VEC2

### SA Fan Assy/EA Fan Assy

No.	Part No.	Part Name	Q'ty	Remark
28	FFV7010055S	Washer	1	
29	FFV1610079S	Fan Assy	1	
30	FFV7020022S	Nut	1	
31	FFV4710409S	Casing	1	
A	FFV7000074S	Truss Tap Screw	8	
D	FFV7000089S	Truss Tap Screw	4	

### PCB Box Assy

No.	Part No.	Part Name	Q'ty	Remark
32	FFV5580017S	Switch Assy	1	⚠
33	FFV5580016S	Switch PCB Cover Assy	1	
34	FFV5580010S	Switch Knob	3	
35	FFV5580011S	Switch Spring	3	
36	FFV5580018S	Switch PCB Assy	1	⚠
37	FFV5580019S	Switch PCB Box Assy	1	
38	FFV4690039S	PCB Cover	1	
39	FFV5820040S	Terminal	1	⚠
40	FFV2800028S	Jumper Cable	1	⚠
41	FFV5820037S	Temperature Sensor	1	⚠
42	FFV5580020S	Switch PCB Wire	1	⚠
43	FFV3740055S	Main PCB Assy	1	⚠
44	FFV4690040S	Power Connect Wire	1	⚠
45	FFV4690027S	PCB Box	1	
46	FFV0000164S	AHU Wire	1	⚠
47	FFV5820038S	Terminal	1	⚠
48	FFV4690028S	Partition Plate	1	
A	FFV7000074S	Truss Tap Screw	1	
D	FFV7000089S	Truss Tap Screw	2	
E	FFV7000102S	Pan Tap Screw	6	

### Frame Cover Assy

No.	Part No.	Part Name	Q'ty	Remark
49	FFV2220076S	Hinge A	2	
50	FFV4620133S	Pressure Plug	4	
51	FFV3440022S	Latch Base	2	
A	FFV7000074S	Truss Tap Screw	8	

## 4. Parts List

FV-10VEC2

### Main Labels

No.	Part No.	Part Name	Q'ty	Remark
52	FFV3740056S	Maintenance Label	1	
53	FFV3402226S	EA OA Adapter Label	1	
54	FFV6730113S	RA SA Adapter Label	1	
55	FFV5580031S	Wall Switch Label	1	
56	FFV0000189S	AHU Label	1	
57	FFV3402194S	Earth Label	1	
58	FFV2260002S	HVI Mark	1	
59	FFV6710056S	Wiring Label	1	
60	FFV4020991S	Name Plate	1	
61	FFV5580022S	Switch Label	1	
62	FFV4690029S	Power Cord Label	1	

### Packing Case Assy

No.	Part No.	Part Name	Q'ty	Remark
63	FFV4710410S	Ceiling Inst. Plate	4	
64	FFV3440023S	L Plate	4	
65	FFV6710049S	Wall Install Bracket	1	
66	FFV2220077S	Hanger	1	
67	FFV2540249S	Installation Instructions	1	English,
68	FFV2540250S	Installation Instructions	1	Spanish,For USA Market.
(68)	FFV2540251S	Installation Instructions	1	French,For CA Market.
69	FFV5580023S	Screw Cover	4	
70	FFV0010253S	Accessory For Screws	1	
71	FFV4710411S	Packing Pad Top	1	
72	FFV4650038S	Poly Cover	1	
73	FFV4710412S	Packing Pad Bottom	1	
74	FFV9001430S	Packing Case Assy	1	



## 4. Parts List

FV-10VE2

### Main Body Section

No.	Part No.	Part Name	Q'ty	Remark
1	FFV1600176S	Frame Body Assy	1	
2	FFV0720012S	Cord Bushing	1	
3	FFV4620115S	Power Cord	1	⚠
4	FFV6710047S	Wiring Cover	1	
5	FFV3740038S	Maintenance Plate	1	
6	FFV4300151S	OA Damper Assy	1	Include Temperature Sensor ⚠
7	FFV3402189S	EA Fan Assy	1	⚠
8	FFV3702280S	SA Fan Assy	1	⚠
9	FFV1600153S	Frame Bracket Assy	1	
10	FFV1600154S	Frame Bracket Hook	1	
11	FFV3402190S	Element Assy	1	
12	FFV3402191S	Element Holder	1	
13	FFV6730102S	RA Filter	1	
14	FFV4300152S	OA Filter M8	1	Merv 8
(14)	FFV4300157S	OA Filter M13	1	Merv 13
15	FFV1600175S	Frame Cover Assy	1	
A	FFV7000074S	Truss Tap Screw	14	
B	FFV7030008S	Pan Screw	2	⚠
C	FFV7000224S	PS Screw	6	
D	FFV7000089S	Truss Tap Screw	2	

### Frame Body Assy

No.	Part No.	Part Name	Q'ty	Remark
16	FFV3440021S	Latch	2	
17	FFV2220075S	Hinge B	2	
18	FFV0000163S	Adapter	2	
A	FFV7000074S	Truss Tap Screw	16	

### SA Fan Assy/EA Fan Assy

No.	Part No.	Part Name	Q'ty	Remark
19	FFV3730127S	Motor Holder Plate	1	
20	FFV2230022S	Holder Gum(B)	1	
21	FFV3402192S	EA Motor Assy	1	⚠
(21)	FFV3702281S	SA Motor Assy	1	⚠
22	FFV2230023S	Holder Gum(A)	1	
23	FFV3730128S	Motor Holder	1	
24	FFV4710408S	Casing Packing	1	
25	FFV3730129S	Motor Base	1	
26	FFV7010055S	Washer	1	
27	FFV1610079S	Fan Assy	1	

## 4. Parts List

FV-10VE2

### SA Fan Assy/EA Fan Assy

No.	Part No.	Part Name	Q'ty	Remark
28	FFV7020022S	Nut	1	
29	FFV4710409S	Casing	1	
A	FFV7000074S	Truss Tap Screw	8	
D	FFV7000089S	Truss Tap Screw	4	

### PCB Box Assy

No.	Part No.	Part Name	Q'ty	Remark
30	FFV5580017S	Switch Assy	1	⚠
31	FFV5580016S	Switch PCB Cover Assy	1	
32	FFV5580010S	Switch Knob	3	
33	FFV5580011S	Switch Spring	3	
34	FFV5580018S	Switch PCB Assy	1	⚠
35	FFV5580019S	Switch PCB Box Assy	1	
36	FFV4690039S	PCB Cover	1	
37	FFV5820040S	Terminal	1	⚠
38	FFV2800028S	Jumper Cable	1	⚠
39	FFV5820037S	Temperature Sensor	1	⚠
40	FFV5580020S	Switch PCB Wire	1	⚠
41	FFV3740055S	Main PCB Assy	1	⚠
42	FFV4690040S	Power Connect Wire	1	⚠
43	FFV4690027S	PCB Box	1	
44	FFV0000164S	AHU Wire	1	⚠
45	FFV5820038S	Terminal	1	⚠
46	FFV4690028S	Partition Plate	1	
A	FFV7000074S	Truss Tap Screw	1	
D	FFV7000089S	Truss Tap Screw	2	
E	FFV7000102S	Pan Tap Screw	6	

### Frame Cover Assy

No.	Part No.	Part Name	Q'ty	Remark
47	FFV2220076S	Hinge A	2	
48	FFV4620133S	Pressure Plug	4	
49	FFV3440022S	Latch Base	2	
A	FFV7000074S	Truss Tap Screw	8	

## 4. Parts List

FV-10VE2

### Main Labels

No.	Part No.	Part Name	Q'ty	Remark
50	FFV3740056S	Maintenance Label	1	
51	FFV3402226S	EA OA Adapter Label	1	
52	FFV6730113S	RA SA Adapter Label	1	
53	FFV5580031S	Wall Switch Label	1	
54	FFV0000189S	AHU Label	1	
55	FFV3402194S	Earth Label	1	
56	FFV2260002S	HVI Mark	1	
57	FFV6710057S	Wiring Label	1	
58	FFV4020992S	Name Plate	1	
59	FFV5580022S	Switch Label	1	
60	FFV4690029S	Power Cord Label	1	

### Packing Case Assy

No.	Part No.	Part Name	Q'ty	Remark
61	FFV4710410S	Ceiling Inst. Plate	4	
62	FFV3440023S	L Plate	4	
63	FFV6710049S	Wall Install Bracket	1	
64	FFV2220077S	Hanger	1	
65	FFV2540249S	Installation Instructions	1	English,
66	FFV2540250S	Installation Instructions	1	Spanish,For USA Market.
(66)	FFV2540251S	Installation Instructions	1	French,For CA Market.
67	FFV5580023S	Screw Cover	4	
68	FFV0010253S	Accessory For Screws	1	
69	FFV4710411S	Packing Pad Top	1	
70	FFV4650038S	Poly Cover	1	
71	FFV4710412S	Packing Pad Bottom	1	
72	FFV9001431S	Packing Case Assy	1	