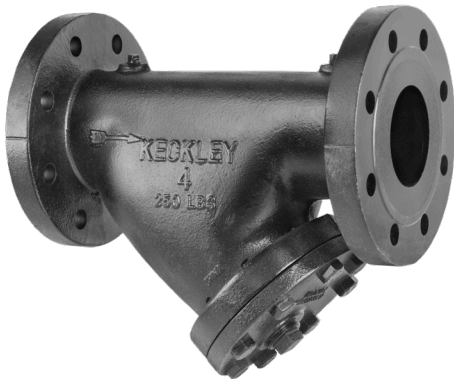


Style A7

Y-Strainer

Cast Iron (ASTM A 126, Class B)

Class 250 RF Flanged



Cast Iron Y-Strainer

APPLICATIONS

Steam, water, oil or gas where protection from foreign matter in a pipeline is required.

CONSTRUCTION

The Keckley Style A7 strainers are constructed from rugged cast iron castings that are machined to exacting specifications. These bodies have drilled flanges that are in accordance with ASME B16.1.

FEATURES

The Keckley Style A7 strainer features a machined groove in both the body and cover for proper screen alignment and to ensure accurate reseating when servicing is required. Style A7 strainers are furnished with a synthetic fiber that is compressed between the body and cover for maximum strength and durability. Keckley Style A7 strainers, sizes 2" - 12", are supplied with 1/4" NPT DP taps.

SCREENS

Standard perforated 304 stainless steel screens are spot welded along the seam for maximum strength. Different size perforations and meshes are available in stainless steel, monel, and brass to meet specific media requirements. If the media is not indicated, screens for *water* will be supplied.

SELF CLEANING

Self cleaning is accomplished by opening the valve or drain plug connected to the blow-off port. **Warning:** See Maintenance Instructions on page **S6** of the Strainer Information Section for additional precautions and detailed information on servicing the strainer.

WORKING PRESSURES - NON SHOCK

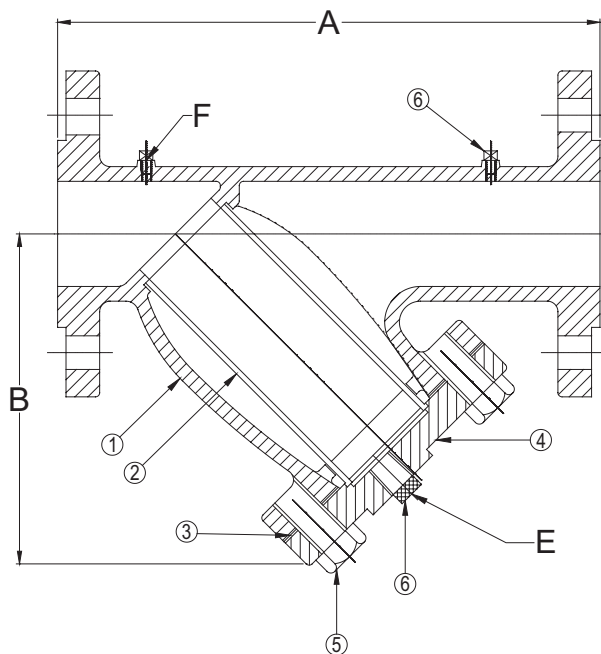
| NOM. RATING | MEDIA | 2" to 12" | 50 mm to 300 mm |
|-------------|--------|-----------------|-------------------|
| CLASS 250 | STEAM | 250 PSI @ 450°F | 1724 KPa @ 232°C |
| | W.O.G. | 500 PSI @ 150°F | 3449 KPa @ 66°C |
| | MEDIA | 14" and 16" | 350 mm and 400 mm |
| | STEAM | 200 PSI @ 406°F | 1379 KPa @ 208°C |
| | W.O.G. | 300 PSI @ 150°F | 2069 KPa @ 66°C |

GOVERNMENT/MILITARY SPECIFICATIONS

Style A cast iron flanged strainers meet or exceed government specification WW-S-2739 (Supersedes MIL-S-16293).

Style A7

Y-Strainer, Class 250 RF Flanged
 Cast Iron (ASTM A 126, Class B)



DP Taps are only on sizes 2" - 12".
 "F" dimension is 1/4" NPT for sizes 2" - 12".

PARTS LIST

| ITEM | DESCRIPTION | MATERIAL |
|------|--------------------|---------------------------------|
| 1 | Body | Cast Iron (ASTM A 126, Class B) |
| 2 | Screen | Stainless Steel (304) |
| 3 | Gasket | Composition |
| 4 | Cover | Cast Iron (ASTM A 126, Class B) |
| 5 | Hex Head Cap Screw | Steel |
| 6 | Plug | Steel |

STANDARD SCREENS SUPPLIED

| SIZE | | SCREEN PERFORATION | | | | | |
|---------|------------|--------------------|-----|-----------|-----------|-----|-----------|
| | | FOR LIQUID | | OPEN AREA | FOR STEAM | | OPEN AREA |
| in | mm | in | mm | | in | mm | |
| 2 to 4 | 50 to 100 | 1/16 | 1.6 | 30% | 3/64 | 1.2 | 33% |
| 5 to 10 | 125 to 250 | 1/8 | 3.2 | 43% | 3/64 | 1.2 | 33% |
| 12 | 300 | 1/8 | 3.2 | 43% | 1/16 | 1.6 | 30% |
| 14 & 16 | 350 & 400 | 1/8 | 3.2 | 43% | 1/8 | 3.2 | 43% |

Standard screens supplied are for **liquid service**, unless otherwise specified.
 Options: Other perforations, meshes, and screen materials are available.

| SIZE | | DIMENSIONS | | | | | | WEIGHTS | |
|-------|-----|------------|------|--------|-----|-------|----|---------|-----|
| | | A | | B | | E | | | |
| in | mm | in | mm | in | mm | in | mm | lbs | kgs |
| 2 | 50 | 9-5/16 | 237 | 6-1/4 | 159 | 1/2 | 15 | 33 | 15 |
| 2-1/2 | 65 | 11-1/16 | 281 | 7-3/4 | 197 | 1 | 25 | 49 | 22 |
| 3 | 80 | 12-5/8 | 321 | 8-1/4 | 210 | 1 | 25 | 57 | 26 |
| 4 | 100 | 15-5/8 | 397 | 10-1/8 | 257 | 1-1/4 | 32 | 106 | 48 |
| 5 | 125 | 18-1/4 | 464 | 12-1/2 | 318 | 1-1/4 | 32 | 157 | 71 |
| 6 | 150 | 20-3/16 | 512 | 14-3/8 | 365 | 1-1/2 | 40 | 215 | 98 |
| 8 | 200 | 25-1/8 | 638 | 17-1/2 | 445 | 1-1/2 | 40 | 315 | 143 |
| 10 | 250 | 29-1/8 | 739 | 21 | 533 | 2 | 50 | 525 | 238 |
| 12 | 300 | 33-3/4 | 857 | 23-5/8 | 600 | 2 | 50 | 700 | 318 |
| 14 | 350 | 37-1/4 | 946 | 27-1/8 | 689 | 2 | 50 | 1400 | 635 |
| 16 | 400 | 42-3/8 | 1076 | 29-1/4 | 743 | 2 | 50 | 1850 | 839 |

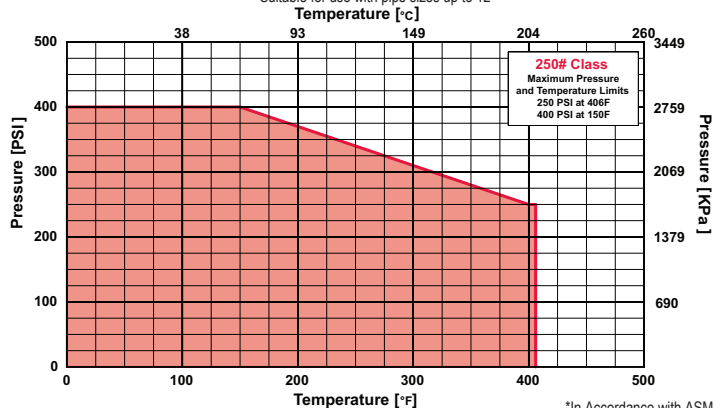
*This table reflects only the nearest metric equivalents.

Dimensions and weights are for reference only. When required, request certified drawings.

Face to face values have a tolerance in compliance with ASME B16.1.

PRESSURE vs. TEMPERATURE CHART

Class 250 RF Flanged Cast Iron (ASTM A 126, Class B)
 Suitable for use with pipe sizes up to 12"



*In Accordance with ASME B16.1

PRESSURE DROP CHART

Flanged “Y” Pattern Strainers (Styles A, BA, BA7, SA, SA7, SSA and SSA7)

This pressure drop chart is based on the flow of clean water through the Keckley “Y” strainers listed above with screen perforations ranging from 3/64” through 1/8”.

TO USE CHARTS:

Find your desired rate of flow (GPM) on the left hand side of the chart. Follow its corresponding horizontal line to the point where it intersects the diagonal line indicating the strainer pipe size. From this point of intersection, follow the vertical line down to the bottom of the chart to determine the approximate pressure drop.

CORRECTION FACTORS:

For finer mesh screens that are backed with a perforated sheet, multiply the pressure drops shown at right by the following:

| | |
|----------|-------|
| 40 mesh | x 1.2 |
| 60 mesh | x 1.4 |
| 80 mesh | x 1.6 |
| 100 mesh | x 1.7 |

