

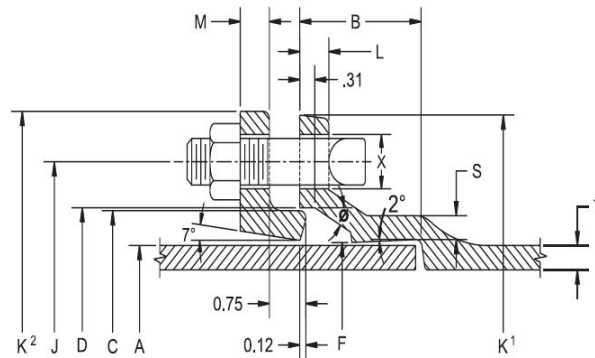
DOMESTIC

NON-DOMESTIC

SUBMITTAL: C153 MECHANICAL JOINT PRODUCT

(Current revisions for the noted Standards apply)

- SIZES:** 2" - 64" (2" not included in ANSI/AWWA C153 standard)
- STANDARDS:** ANSI/AWWA C153/A21.53, NFPA13/24, 3"-16" UL and 3"-10" FM listed & approved (File - Tyler Union)
- MATERIAL:** Cast of ASTM A536 qualified ductile iron. Date code is cast on and required for traceability.
- PRESSURE RATING:** *Flanged fittings rated at 250 psi. Mechanical joints 2" – 24" rated at 350 psi and 30" – 48" at 250 psi.
*Note: With rubber annular ring flange gasket, 2" – 24" Flanged fittings can be rated at 350 psi.
Note: Wyes over 12" are not pressure rated. Contact Tyler Union for rating in your application.
- DEFLECTION:** Joint deflection 5° max for 2"– 12" and 3° max for 14"– 48". Reduces by 50% at nominal pipe & fitting diameters
- NSF-61 & NSF372:** Meets all requirements including Annex G, Tyler Union's Underwriters Laboratory listing MH16439.
- ASPHALT COATING:** Per ANSI/AWWA C104/A21.4 and ANSI/AWWA C153/A21.53.
- CEMENT LINING:** Per ANSI/AWWA C104/A21.4, with double cement lining available upon request.
- EPOXY COATING:** Fusion bonded epoxy per ANSI/AWWA C116/A21.16. Additional coatings available upon request.
- BARE FITTINGS:** Available upon request.
- FASTNERS:** High strength low alloy weathering steel per ANSI/AWWA C111/A21.11 and ASTM A242
- INSTALLATION:** Install per AWWA C600/C651 using pipe conforming to ANSI/AWWA C151/A21.51 or AWWA C900/905.



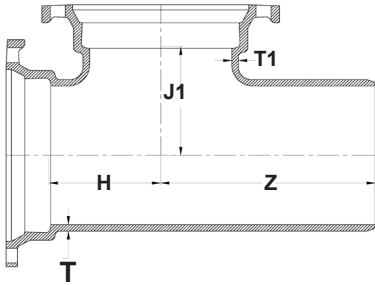
NOMINAL JOINT DIMENSIONS IN INCHES

BOLTS

Size Inches	A Dia. DI Pipe	B Hub Depth	C Dia. GLAND	D Dia.	F Dia.	J Dia. GLAND	K ¹ Dia.	K ² Dia. GLAND	L	M GLAND	S	T	X	Size	Qty.
2	2.51	2.50	3.50	3.60	2.61	4.75	6.19	6.89	0.58	0.62	0.36	0.30	3/4	5/8x3	2
3	3.96	2.50	4.84	4.94	4.06	6.19	7.62	7.69	0.58	0.62	0.39	0.33	3/4	5/8x3	4
4	4.80	2.50	5.92	6.02	4.90	7.50	9.06	9.12	0.60	0.75	0.39	0.34	7/8	3/4x3-1/2	4
6	6.90	2.50	8.02	8.12	7.00	9.50	11.06	11.12	0.63	0.88	0.43	0.36	7/8	3/4x3-1/2	6
8	9.05	2.50	10.17	10.27	9.15	11.75	13.31	13.37	0.66	1.00	0.45	0.38	7/8	3/4x4	6
10	11.10	2.50	12.22	12.34	11.20	14.00	15.62	15.62	0.70	1.00	0.47	0.40	7/8	3/4x4	8
12	13.20	2.50	14.32	14.44	13.30	16.25	17.88	17.88	0.73	1.00	0.49	0.42	7/8	3/4x4	8
14	15.30	3.50	16.40	16.54	15.44	18.75	20.31	20.25	0.79	1.25	0.55	0.47	7/8	3/4x4-1/2	10
16	17.40	3.50	18.50	18.64	17.54	21.00	22.56	22.50	0.85	1.31	0.58	0.50	7/8	3/4x4-1/2	12
18	19.50	3.50	20.60	20.74	19.64	23.25	24.83	24.75	1.00	1.38	0.68	0.54	7/8	3/4x4-1/2	12
20	21.60	3.50	22.70	22.84	21.74	25.50	27.08	27.00	1.02	1.44	0.69	0.57	7/8	3/4x4-1/2	14
24	25.80	3.50	26.90	27.04	25.94	30.00	31.58	31.50	1.02	1.56	0.75	0.61	7/8	3/4x5	16
30	32.00	4.50	33.29	33.46	32.17	36.88	39.12	39.12	1.31	2.00	0.82	0.66	1-1/8	1x6	20
36	38.30	4.50	39.59	39.76	38.47	43.75	46.00	46.00	1.45	2.00	1.00	0.74	1-1/8	1x6	24
42	44.50	4.50	45.79	45.96	44.67	50.62	53.12	53.12	1.45	2.00	1.25	0.82	1-3/8	1-1/4x6-1/2	28
48	50.80	4.50	52.09	52.26	50.97	57.50	60.00	60.00	1.45	2.00	1.35	0.90	1-3/8	1-1/4x6-1/2	32
54	Available on Request														
60	Available on Request														
64	Available on Request														

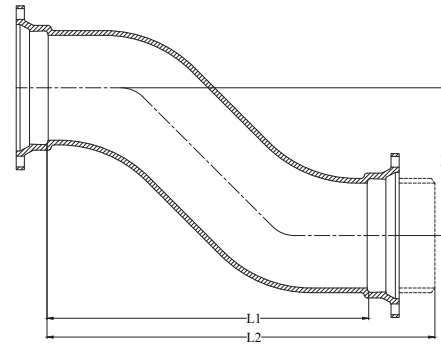
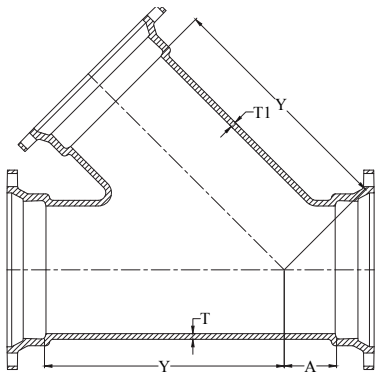


C153 DUCTILE IRON COMPACT FITTINGS



MJxPExMJ TEES												
Domestic							Import					
Size	T	T1	*H	*J1	*Z	Weight	T	T1	*H	*J1	*Z	Weight
6	0.37	0.37	5.00	5.00	11.50	57	0.37	0.37	8.00	8.00	16.00	57
8x6	0.39	0.37	5.50	6.50	11.50	79	0.39	0.37	9.00	9.00	17.00	79
8	0.39	0.39	6.50	6.50	12.50	81	0.38	0.38	9.00	9.00	17.00	77
10	0.41	0.41	7.50	7.50	13.00	133	0.40	0.40	11.00	11.00	19.00	120

Tyler Union does not recommend the use of wedge action restraints on plain end fittings



WYES/LATERAL					
Size	*A	*Y	T	T1	Weights
3	2.50	7.50	0.34	0.34	36
4x3	2.00	8.50	0.35	0.34	39
4	2.50	8.50	0.35	0.35	45
6x4	1.50	11.00	0.37	0.35	67
6	3.00	13.00	0.37	0.37	85
8x4	0.50	13.00	0.39	0.35	86
8x6	2.00	16.00	0.39	0.37	109
8	3.50	16.00	0.39	0.39	117
10x4	0.00	15.00	0.41	0.35	112
10x6	1.00	16.00	0.41	0.37	129
10x8	2.50	17.00	0.41	0.39	162
10	3.50	19.00	0.41	0.41	199
12x4	0.00	16.50	0.43	0.35	141
12x6	1.50	18.50	0.43	0.37	170
12x8	1.50	18.50	0.43	0.39	177
12x10	3.00	20.00	0.43	0.41	216
12	4.50	22.50	0.43	0.43	269
14	6.00	25.00	0.51	0.51	476
16x6	0.00	21.00	0.52	0.45	300
16x8	0.50	22.50	0.52	0.46	349
16x12	3.50	25.00	0.52	0.48	471
16	6.50	28.00	0.52	0.52	635

*Not in AWWA C153. "A" & "Y" are approximate dim.

OFFSETS (MJ x MJ) or (MJxPE)					
Import				Weights	
Size	D	L1	L2	MJ x MJ	MJ x PE
3	6.00	9.00	14.50	23	29
3	12.00	15.00	20.50	34	39
3	18.00	21.00	26.50	40	48
3	24.00	27.00	32.50	47	53
4	6.00	10.00	15.50	32	44
4	12.00	6.00	21.50	42	54
4	18.00	22.00	27.50	56	65
4	24.00	28.00	33.50	65	72
6	6.00	12.00	17.50	55	54
6	12.00	18.00	23.50	72	68
6	18.00	24.00	29.50	88	96
6	24.00	30.00	35.50	111	117
8	6.00	13.00	18.50	79	78
8	12.00	19.00	24.50	103	110
8	18.00	25.00	30.50	128	124
10	6.00	15.00	20.50	112	130
10	12.00	21.00	26.50	148	172
10	18.00	27.00	32.50	176	189
12	6.00	17.00	22.50	157	-
12	12.00	23.00	28.50	174	198
12	18.00	29.00	34.50	210	270
12	24.00	35.00	40.50	298	334
12	30.00	41.00	46.50	283	205