

# 78" ANDO

## BARN DOOR HARDWARE KIT

SKU: 950672



### FEATURES

For doors up to 36" wide.

Wheel: 4-3/4" diameter.

Steel 1-1/4" diameter roller bearings.

Track Size: 1/4" Steel, 1-1/2" x 78-3/4".

Strap Size: 1/4" steel, 13-1/2" x 1-1/2".

Optional Soft Close Adapter:

For use with flat rails.

Steel construction for long lasting durability.

Keeps door from slamming when opening and closing.

Installs concealed behind the rail.

Soft close kit includes:

Low profile soft close adapter left hand (1).

Low profile soft close adapter right hand (1).

Low profile soft close trigger (2).

Trigger screws (6).

Cone-point set screws (8).

Allen wrench for set screws (1).

Width: 12-11/16".

Depth: 1-1/4".

Height: 1-1/8".

### CONTENTS

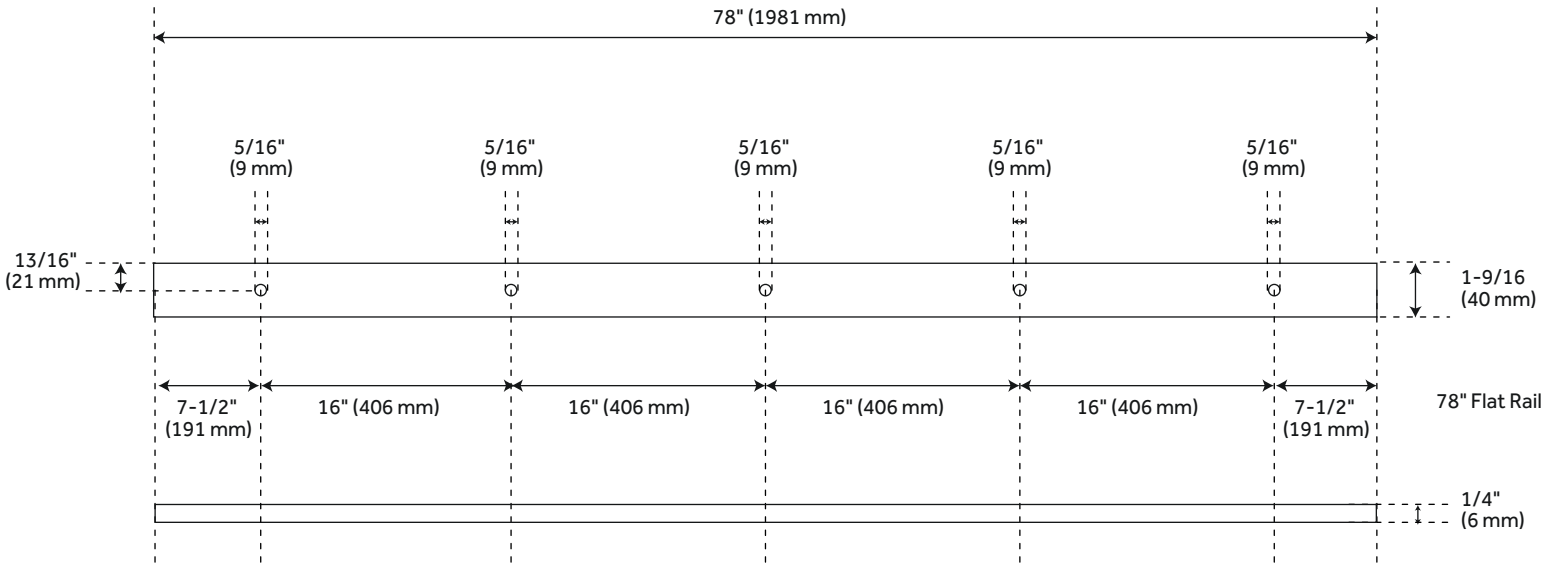
FLAT RAIL	.....	PAGE 2
STANDARD WHEEL	.....	PAGE 3
BENT STRAP HANGER	.....	PAGE 3
MORTISE FLOOR GUIDE	.....	PAGE 3
NON-MORTISE FLOOR GUIDE	.....	PAGE 3
TRACK LAG BOLT	.....	PAGE 4
FLAT RAIL SPACER	.....	PAGE 4
FLAT RAIL STOP	.....	PAGE 4
ANTI JUMP DISK	.....	PAGE 4

REVISED 10/09/2020

# 78" ANDO

## BARN DOOR HARDWARE KIT

SKU: 950672



### FEATURES

- Material: Stainless Steel
- Design: Modern
- Length: 78"
- Height: 14"
- Depth: 2"
- Mounting Hardware Included: Yes
- Mounting Hardware Concealed: No
- Weight Limit (Lbs): 220

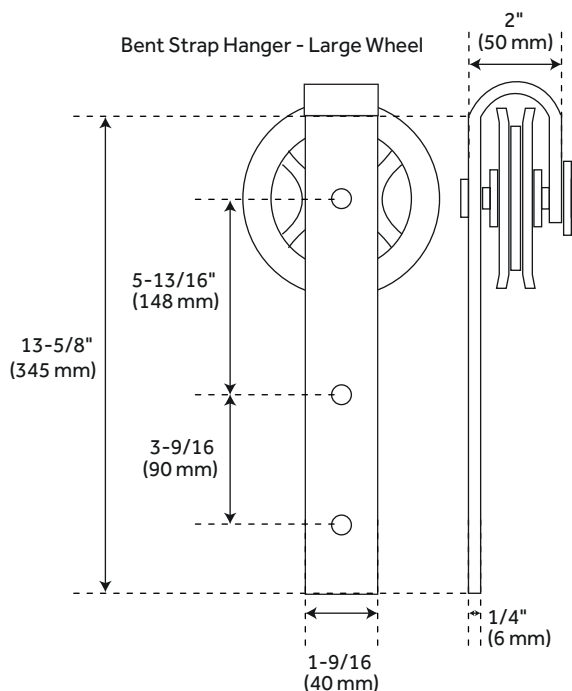
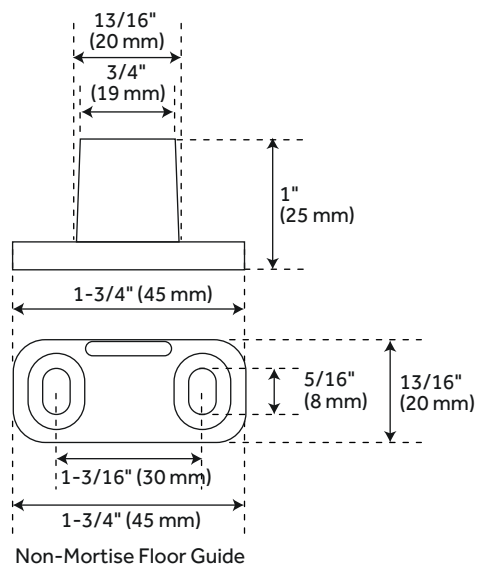
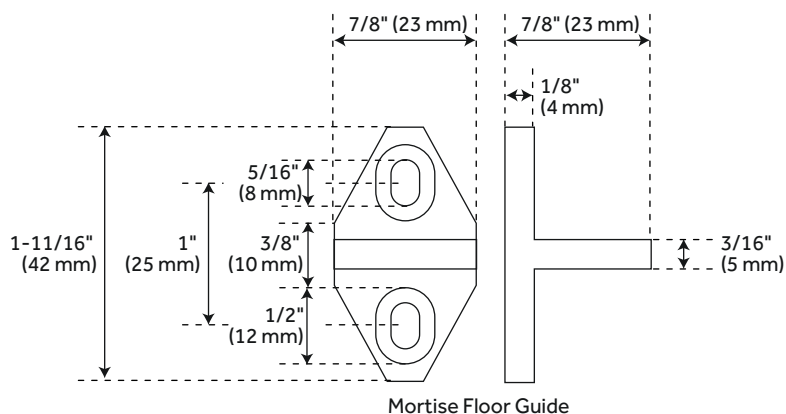
### PRODUCT IMAGE



# 78" ANDO

## BARN DOOR HARDWARE KIT

SKU: 950672



### FEATURES

Material: Stainless Steel  
 Design: Modern  
 Length: 78"  
 Height: 14"  
 Depth: 2"  
 Mounting Hardware Included: Yes  
 Mounting Hardware Concealed: No  
 Weight Limit (Lbs): 220

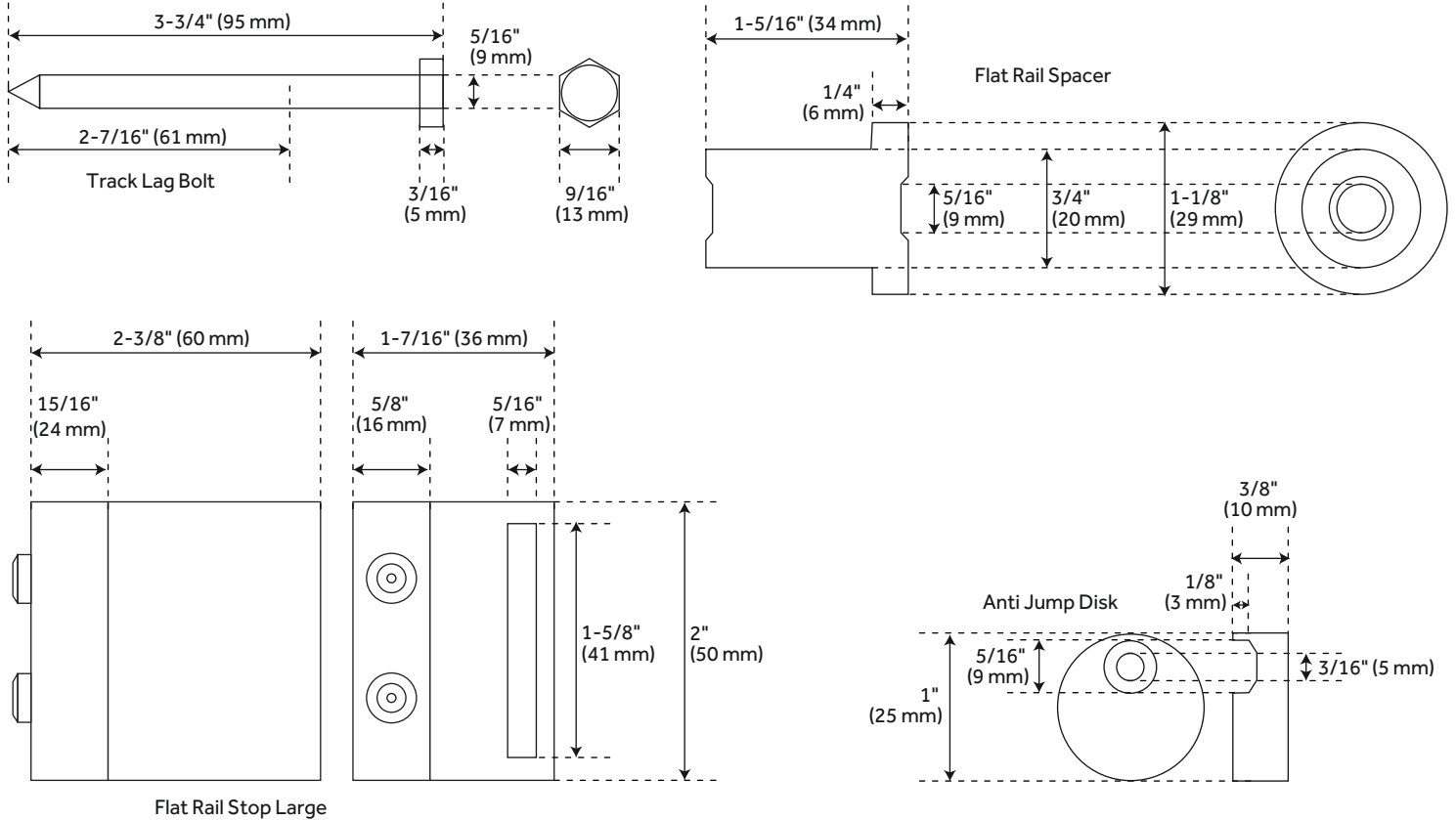
### PRODUCT IMAGE



# 78" ANDO

## BARN DOOR HARDWARE KIT

SKU: 950672



### FEATURES

Material: Stainless Steel  
 Design: Modern  
 Length: 78"  
 Height: 14"  
 Depth: 2"  
 Mounting Hardware Included: Yes  
 Mounting Hardware Concealed: No  
 Weight Limit (Lbs): 220

### PRODUCT IMAGE

