

120" ANDO

BARN DOOR HARDWARE KIT

SKU: 950670



FEATURES

For doors up to 60" wide.

Wheel: 4-3/4" diameter.

Steel 1-1/4" diameter roller bearings.

Track Size: 1/4" Steel, 1-1/2" x 60" (2).

Strap Size: 1/4" Steel, 13-1/2" x 1-1/2".

Optional Soft Close Adapter:

For use with flat rails.

Steel construction for long lasting durability.

Keeps door from slamming when opening and closing.

Installs concealed behind the rail.

Soft close kit includes:

Low profile soft close adapter left hand (1).

Low profile soft close adapter right hand (1).

Low profile soft close trigger (2).

Trigger screws (6).

Cone-point set screws (8).

Allen wrench for set screws (1).

Width: 12-11/16".

Depth: 1-1/4".

Height: 1-1/8".

CONTENTS

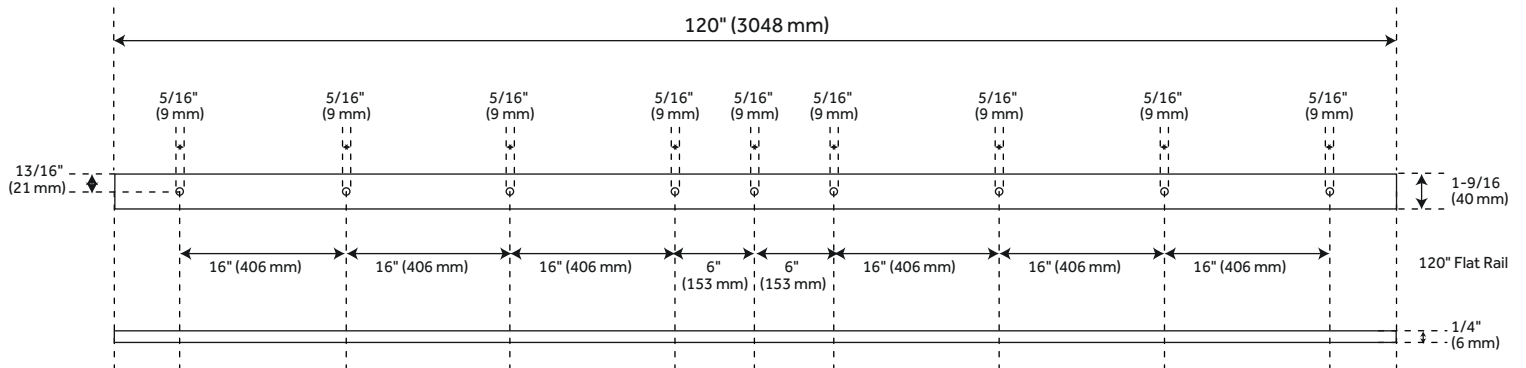
FLAT RAIL	PAGE 2
STANDARD WHEEL	PAGE 3
BENT STRAP HANGER	PAGE 3
MORTISE FLOOR GUIDE	PAGE 3
NON-MORTISE FLOOR GUIDE	PAGE 3
TRACK LAG BOLT	PAGE 4
FLAT RAIL SPACER	PAGE 4
FLAT RAIL STOP	PAGE 4
ANTI JUMP DISK	PAGE 4

REVISED 10/09/2020

120" ANDO

BARN DOOR HARDWARE KIT

SKU: 950670



FEATURES

Material: Stainless Steel
Design: Modern
Length: 120"
Height: 14"
Depth: 2"
Mounting Hardware Included: Yes
Mounting Hardware Concealed: No
Weight Limit (Lbs): 220

PRODUCT IMAGE



PAGE 2

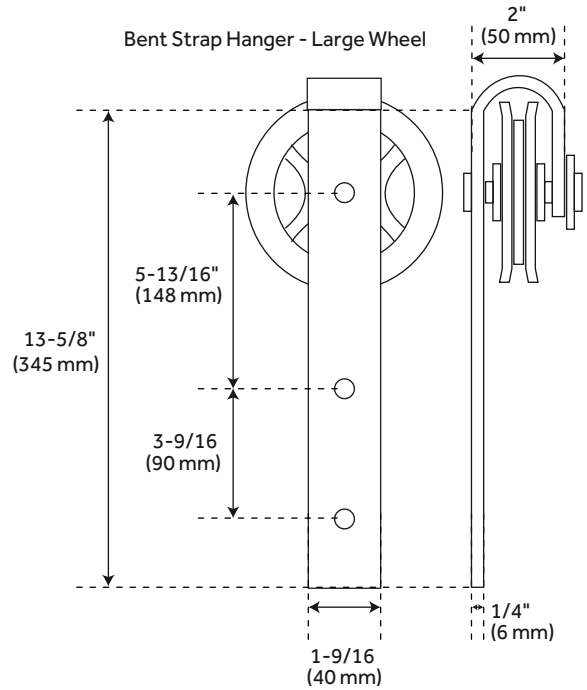
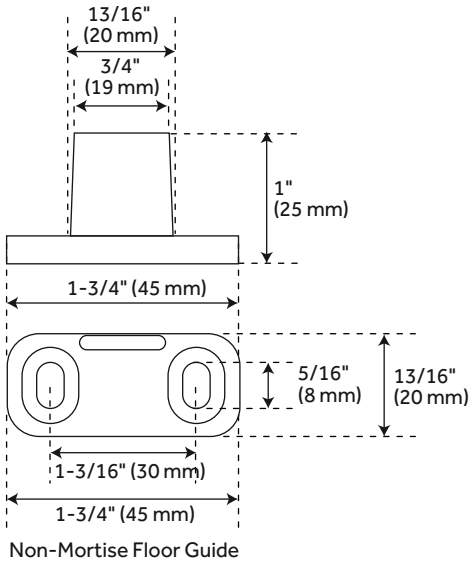
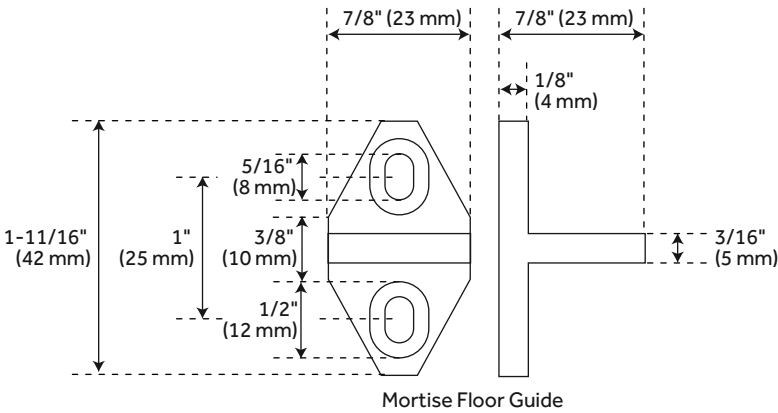
All dimensions and specifications are nominal and may vary. Use actual products for accuracy in critical situations.

Code: 533060, 533061

120" ANDO

BARN DOOR HARDWARE KIT

SKU: 950670



FEATURES

- Material: Stainless Steel
- Design: Modern
- Length: 120"
- Height: 14"
- Depth: 2"
- Mounting Hardware Included: Yes
- Mounting Hardware Concealed: No
- Weight Limit (Lbs): 220

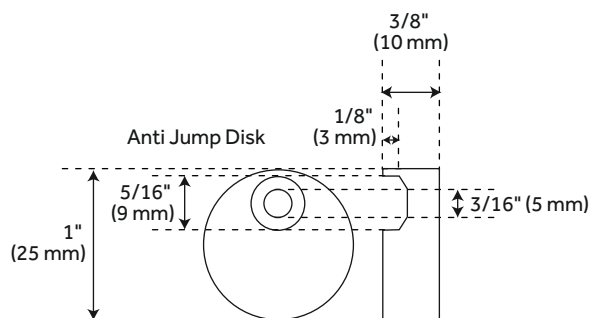
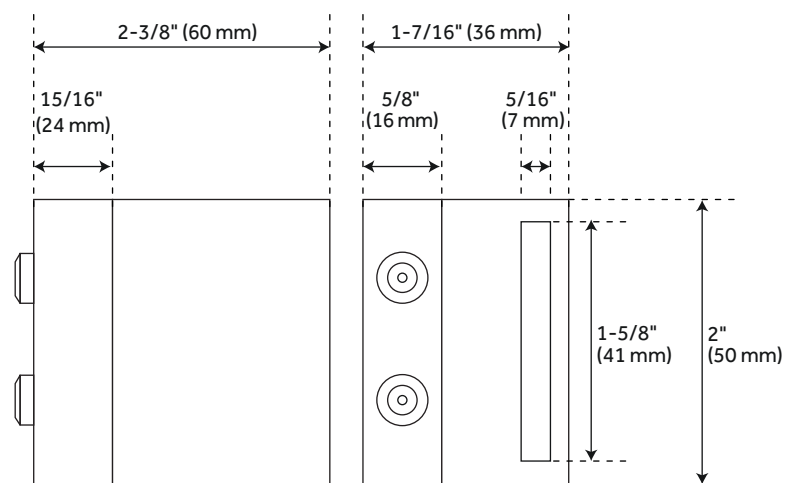
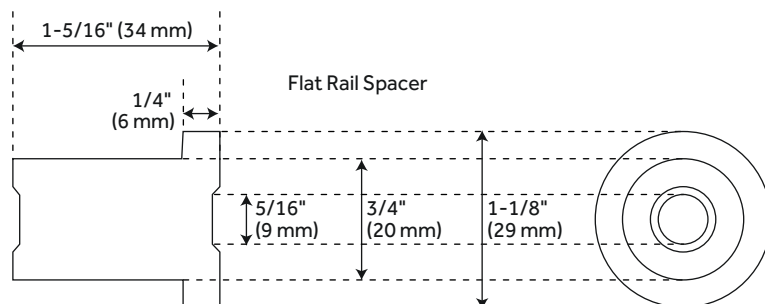
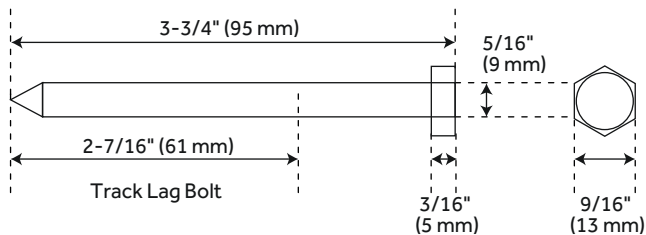
PRODUCT IMAGE



120" ANDO

BARN DOOR HARDWARE KIT

SKU: 950670



FEATURES

Material: Stainless Steel
Design: Modern
Length: 120"
Height: 14"
Depth: 2"
Mounting Hardware Included: Yes
Mounting Hardware Concealed: No
Weight Limit (Lbs): 220

PRODUCT IMAGE

