

96" ANDO

BARN DOOR HARDWARE KIT

SKU: 950673



FEATURES

- For doors up to 48" wide.
- Wheel: 4-3/4" diameter.
- Steel 1-1/4" diameter roller bearings.
- Track Size: 1/4" Steel, 1-1/2" x 96".
- Strap Size: 1/4" Steel, 13-1/2" x 1-1/2".
- Optional Soft Close Adapter:
 - For use with flat rails.
 - Steel construction for long lasting durability.
 - Keeps door from slamming when opening and closing.
 - Installs concealed behind the rail.
- Soft close kit includes:
 - Low profile soft close adapter left hand (1).
 - Low profile soft close adapter right hand (1).
 - Low profile soft close trigger (2).
 - Trigger screws (6).
 - Cone-point set screws (8).
 - Allen wrench for set screws (1).
 - Width: 12-11/16".
 - Depth: 1-1/4".
 - Height: 1-1/8".

CONTENTS

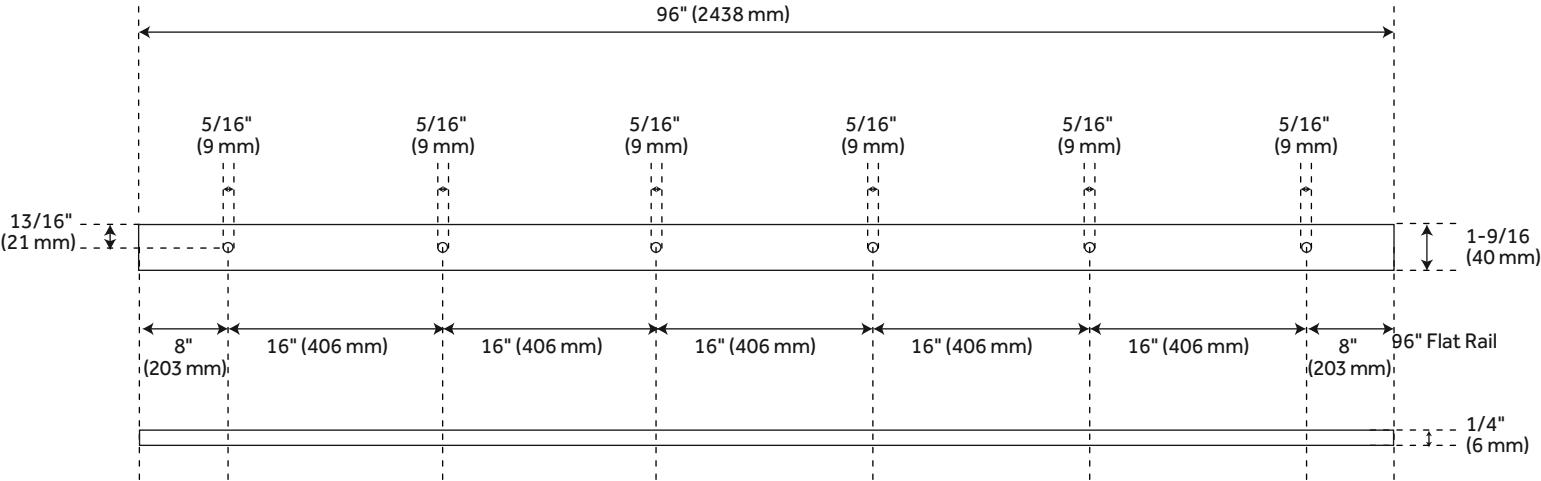
FLAT RAIL	PAGE 2
STANDARD WHEEL	PAGE 3
BENT STRAP HANGER	PAGE 3
MORTISE FLOOR GUIDE	PAGE 3
NON-MORTISE FLOOR GUIDE	PAGE 3
TRACK LAG BOLT	PAGE 4
FLAT RAIL SPACER	PAGE 4
FLAT RAIL STOP	PAGE 4
ANTI JUMP DISK	PAGE 4

REVISED 10/09/2020

96" ANDO

BARN DOOR HARDWARE KIT

SKU: 950673



FEATURES

- Material: Stainless Steel
- Design: Modern
- Length: 96"
- Height: 14"
- Depth: 2"
- Mounting Hardware Included: Yes
- Mounting Hardware Concealed: No
- Weight Limit (Lbs): 220

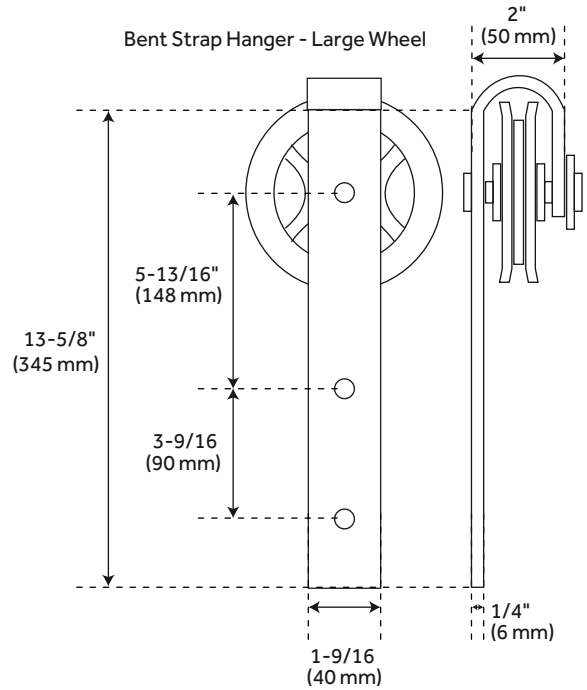
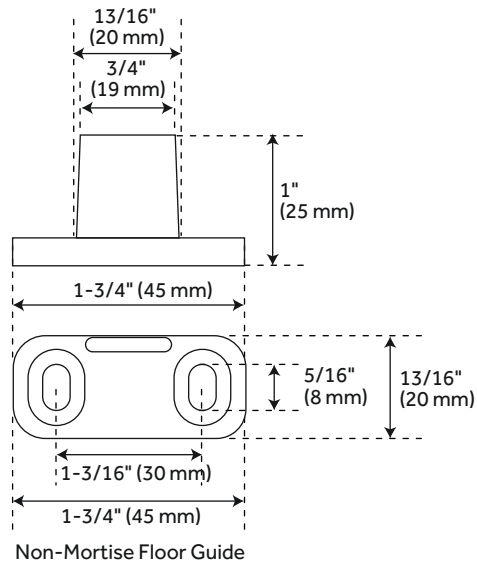
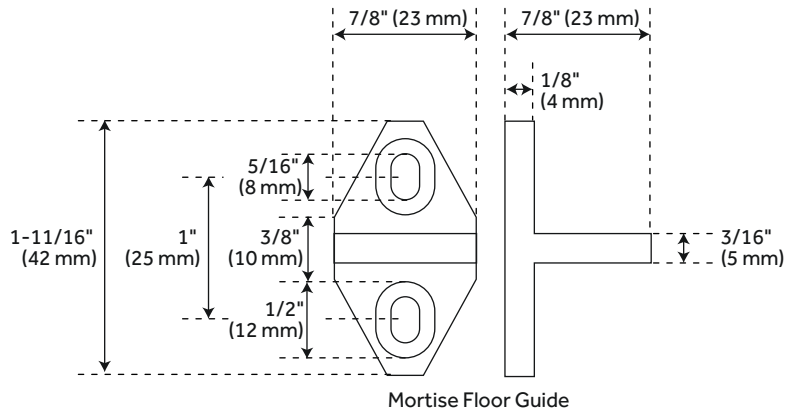
PRODUCT IMAGE



96" ANDO

BARN DOOR HARDWARE KIT

SKU: 950673



FEATURES

Material: Stainless Steel
Design: Modern
Length: 96"
Height: 14"
Depth: 2"
Mounting Hardware Included: Yes
Mounting Hardware Concealed: No
Weight Limit (Lbs): 220

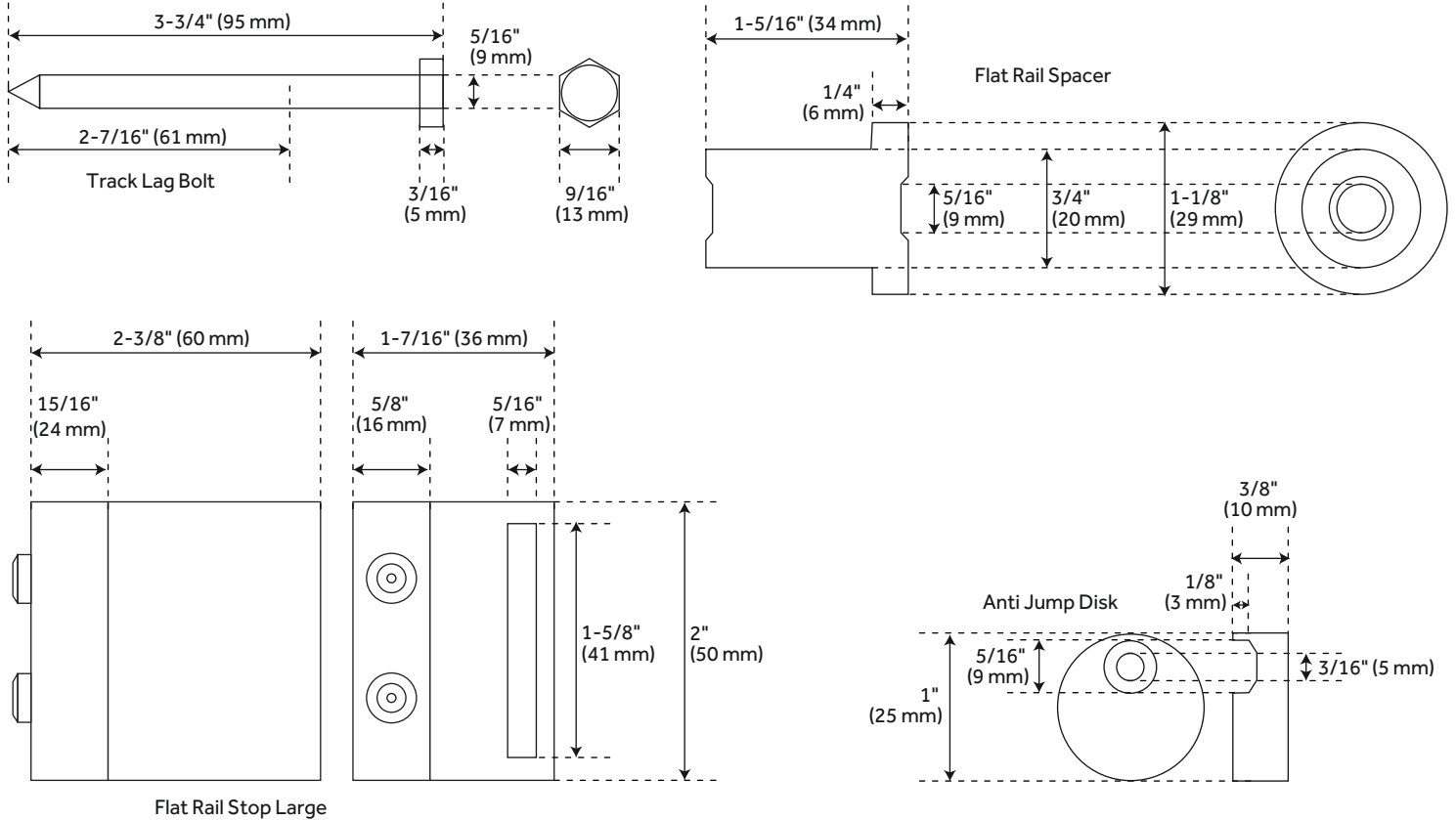
PRODUCT IMAGE



96" ANDO

BARN DOOR HARDWARE KIT

SKU: 950673



FEATURES

Material: Stainless Steel
 Design: Modern
 Length: 96"
 Height: 14"
 Depth: 2"
 Mounting Hardware Included: Yes
 Mounting Hardware Concealed: No
 Weight Limit (Lbs): 220

PRODUCT IMAGE

