

## FAUCET DESCRIPTION

- Chrome plated metal construction
- Pressure balancing cycle valve design with 1/4 turn stops
- Contains: hand-held shower, 30" slide bar, drop ell, vacuum breaker, 69" metal hose and mounting hardware
- **Slide bar is NOT DESIGNED TO BE A GRAB BAR**
- Supplied with vandal resistant screws
- Quick cleaning rubber nozzles

## OPERATION

- Temperature valve has ADA compliant lever style handle
- Handle operates counterclockwise through a 270° arc with off at 6 o'clock, and maximum hot at the 9 o'clock position. Shut off in clockwise direction
- Adjustable temperature limit stop
- Pressure balancing mechanism maintains selected discharge temperature to ± 2°.
- Single function spray pattern

## FLOW

- 2.5 gpm (9.5 L/min) MAX at 80 psi for Hand-Held shower head

## CARTRIDGE

- 1222HD brass cartridge design
- Brass construction with stainless steel materials
- Accommodates back to back installations

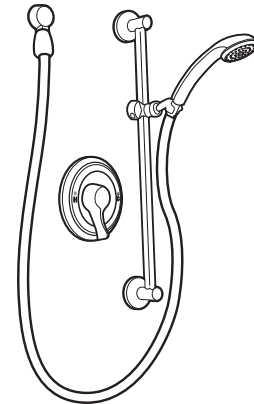
## STANDARDS

- Third party certified to ASME A112.18.1/CSA B125.1 and all applicable requirements referenced therein

- **ADA** for lever handle

## WARRANTY

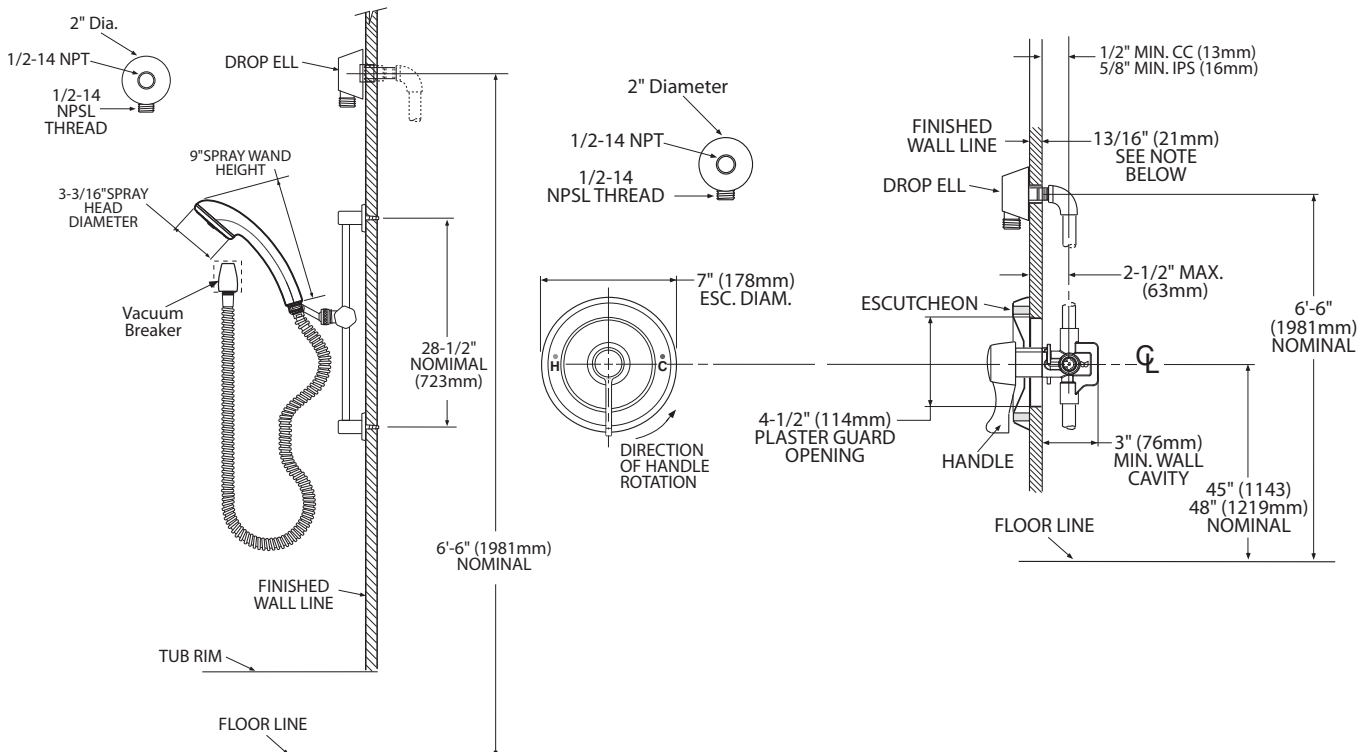
- Warranted for 5 years against material or manufacturing defects



## Single-Handle Pressure Balancing Shower Valve With Hand-Held Shower System



Model: 8346



## CRITICAL DIMENSIONS

(DO NOT SCALE)