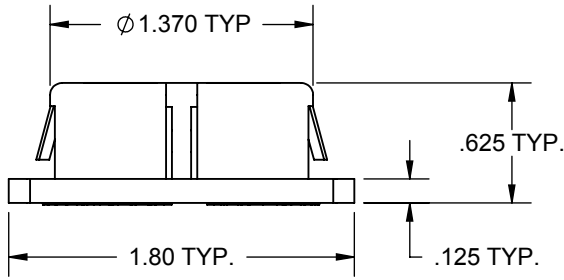
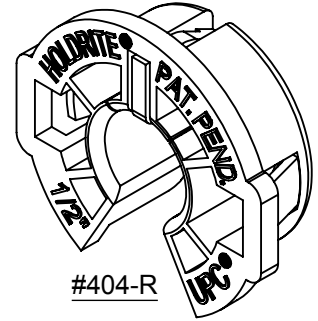


# PRODUCT SPECIFICATION DRAWING

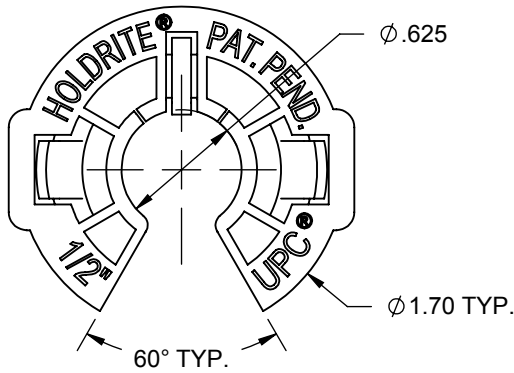
## HOLDRITE® #404-R, #405-R & #406-R



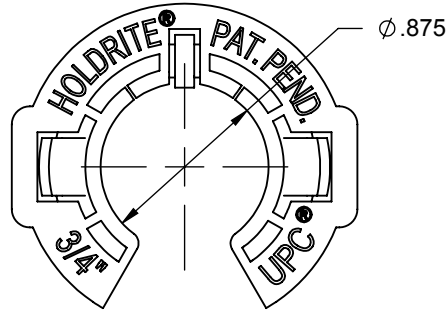
ALL DIMENSIONS IN INCHES



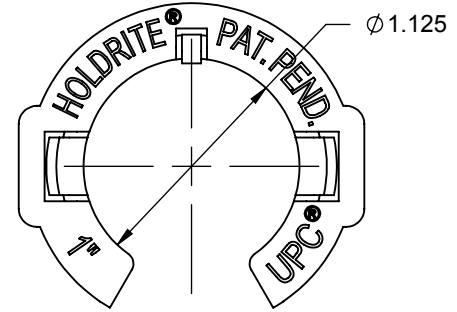
#404-R



#404-R



#405-R



#406-R

**Fire retardant plastic insert for 1/2", 3/4" and 1" CTS tubing. Fits in 1-3/8" hole in metal framing. Designed for use up to 14 gage metal penetrations. Ideal for isolation of Copper, PEX or CPVC tubing in fire rated environments.**

### Product Information:

- Material: Polyethylene, blue, FR UL94V-2
- Rated to 180°F service temperature
- UPC / IPC / IAPMO listed



THIS INFORMATION IS PROPRIETARY TO HOLDRITE AND IS SUBJECT TO CHANGE WITHOUT NOTICE. IT MAY NOT BE REPRODUCED IN PART OR WHOLE WITHOUT WRITTEN AUTHORIZATION.

Product Submittal	
Job Name:	
Date:	
Part Number:	Qty:
Architect / Owner:	
Contractor:	
Notes:	



CONVERTING MAKESHIFT METHODS INTO ENGINEERED SOLUTIONS<sup>SM</sup>  
 800-321-0316 OR 760-744-6944 / FAX: 760-744-0507 / WWW.HOLDRITE.COM  
 spec\_404-R\_405-R\_406-R\_RevH