

# SUBMITTAL DATA SHEET

NI\_G\_IN\_00065.docx  
Rev. -1 of 08/09/2023



## NIRON CLIMA BUTT FUSION FITTING STUB FLANGE SDR 9



**ITEM:** 27NCRT\_9  
**SIZE RANGE:** 1" (32 mm) ÷ 14" (355 mm)  
**SDR:** 9  
**FUSION RANGE:** For Butt Fusion – SDR9  
For Electrofusion – SDR9 and up  
**MATERIAL:** PP-RCT (Borealis RA 7050 beta crystalline random copolymer PP)  
**COLOR:** Steel Grey

### INSTALLATION INSTRUCTIONS:

Butt fusion - Butt fitting in accordance with DVS 2207, ASTM D2657 and NUPI Niron Installation Manual  
Electrofusion - Electrofusion in accordance with ASTM D2657 and NUPI Niron Installation Manual

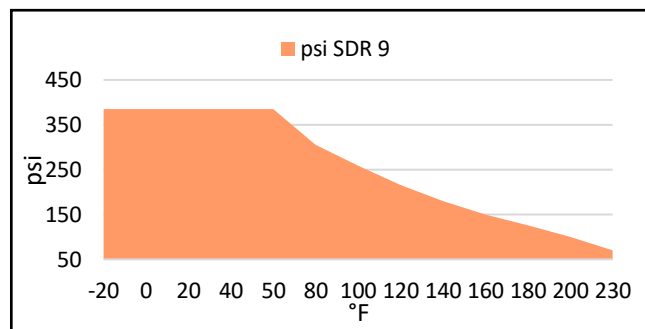
### LISTINGS:

NSF PW; ANSI/NSF 14; ANSI/NSF 61; ANSI/NSF 51; UPC; IPC; IAPMO; ICC-ES

### STANDARDS:

ANSI/NSF 14; ANSI/NSF 61; ASTM F2389; ASTM F2023; CSA B137,11; ASTM E-84\*\*\*; CAN/ULC S102\*\*\*; NSF 51; ISO 15874

### MAXIMUM OPERATING PRESSURE:



For code or standard question pertaining to NIRON CLIMA Pipe and Fittings, contact Nupi Americas.

### RODUCT INFORMATION AND APPLICATION USE:

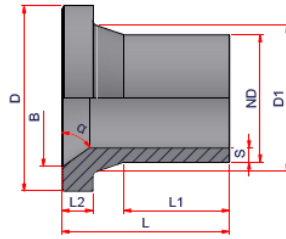
Niron Butt Fusion Fittings is designed to be joined by means of heat element butt fusion or electrofusion in accordance with the above listed installation instructions. Fittings are manufactured with extended plain ends on each outlet which a reinforced area in the center of the fitting for strength. The dimensions of the fittings are in accordance with the requirements of ASTM F2389. The fittings are designed to match the wall thickness and pressure ratings of the matching Niron pipe of the same SDR. Fittings are unitary and injection molded and are solid grey in color.



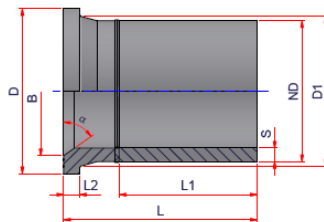
Nupi Americas, Inc.  
314 Commerce Parkway  
Early Branch, SC 29916  
Phone: 813-398-3579  
Fax: 813-398-3639  
Mail: [info@nupiamericas.com](mailto:info@nupiamericas.com)  
Website: [www.nupiamericas.com](http://www.nupiamericas.com)

# SUBMITTAL DATA SHEET

NI\_G\_IN\_00065.docx  
Rev. -1 of 08/09/2023



CODE	Flange Type (DN according to ANSI 150#)	Weight lbs/pc	Volume ft <sup>3</sup> /pc	ND	S	D1	D	L1	L2	L	B	α
27NCRT329	1"	0.108	0.0109	1" => 32 mm	0.14	1.65	2.48	1.73	0.41	3.07	1.26	72.5°
27NCRT409	1 1/4"	0.165	0.0176	1 1/4" => 40 mm	0.18	1.93	2.83	2.48	0.43	3.78	1.57	55°
27NCRT509	1 1/2"	0.338	0.0278	1 1/2" => 50 mm	0.22	2.36	3.23	2.76	0.71	4.61	1.97	67.5°
27NCRT639	2"	0.475	0.0417	2" => 63 mm	0.28	2.95	3.96	2.83	0.71	4.61	2.44	77°
27NCRT759	2 1/2"	0.734	0.064	2 1/2" => 75 mm	0.33	3.5	4.69	3.27	0.83	5.04	2.87	74.5°
27NCRT909	3"	0.977	0.0812	3" => 90 mm	0.4	4.13	5.22	3.62	0.79	5.16	3.62	68°
27NCRT1109	4"	1.473	0.1239	3 1/2" => 110 mm	0.48	5.04	6.3	3.9	0.87	5.39	4.17	69°
27NCRT1259	4"	1.817	0.1347	4" => 125 mm	0.55	5.2	6.3	3.94	0.93	5.87	4.33	74.5°
27NCRT1259A5	5"	2.917	0.219	4" => 125 mm	0.55	5.51	7.52	3.98	1.24	6.69	5.59	57°
27NCRT1609	6"	3.515	0.2684	6" => 160 mm	0.7	6.89	8.39	4.23	1.1	6.59	5.71	72.5°
27NCRT2009	8"	7.086	0.5496	8" => 200 mm	0.88	9.13	10.63	5.43	1.69	8.41	8.15	65°
27NCRT2509	10"	-	0.7811	10" => 250 mm	1.1	11.22	12.6	5.24	1.89	8.5	10.2	62.5°
27NCRT3159	12"	18.376	1.1216	12" => 315 mm	1.39	12.76	14.57	5.47	2.03	9.13	11.02	65°



CODE	Flange Type (DN according to ANSI 150#)	Weight lbs/pc	Volume ft <sup>3</sup> /pc	ND	S	D1	D	L1	L2	L	B	α
27NCRT3559MB	14"	38.545	3.2182	14" => 355 mm	1.56	14.05	16.91	13.39	1.65	19.45	13.39	67.5°

## MANUFACTURER'S WARRANTY:

Thirty (30) Years from the date of sale upon successful completion of pressure test of the piping system (refer to published warranty for complete details).

### NOTE:

\* More information can be found on NIRON TECHNICAL CATALOGUE

\*\*\* In order for Niron pipe and fittings to meet E-84 and/or CAN/ULC S102.2 for installation in a plenum application, it must be covered with a minimum of 1" or greater E-84 fiberglass insulation

\*\*\*\* Technical Data may undergo dimensional changes, check revision at the top

\*\*\*\*\* It is the designer's/installer's responsibility to verify disc clearance before installation/purchasing the product by dry fitting the stub flange with the butterfly valve. Consult the Niron Installation Manual for further details concerning the installation of butterfly valves



Nupi Americas, Inc.  
314 Commerce Parkway  
Early Branch, SC 29916  
Phone: 813-398-3579  
Fax: 813-398-3639  
Mail: [info@nupiamericas.com](mailto:info@nupiamericas.com)  
Website: [www.nupiamericas.com](http://www.nupiamericas.com)