

BLUE-TUBE XL

COMMERCIAL UVC SYSTEM

FRESH-AIRE UV

The Indoor Air Quality Expert

This system is designed to improve indoor air quality by sterilizing airborne viruses, bacteria, and allergens. When coil-mounted it also saves energy and maintenance costs associated with commercial HVAC. A biofilm of only 0.002" can reduce efficiency by 37%! UVC germicidal disinfection is the most cost-effective and practical solution.

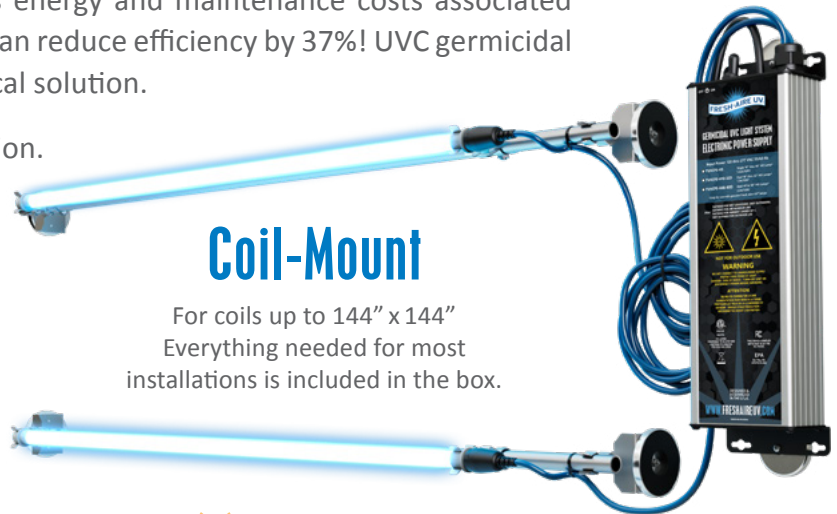
Blue-Tube XL offers easy and flexible installation. It includes an advanced multi-voltage, water-resistant power supply. All parts (except lamps) are covered by a lifetime warranty. This system also improves indoor air quality by sterilizing airborne bacteria, viruses, and allergens.

FEATURES

- Coil-mount for optimal biofilm disinfection
- Duct-mount for optimal airborne disinfection
- Fits coils up to 144" x 144"*
- High-output 2-year guaranteed UVC lamps
- Includes everything needed for most installations
- Scalable design for multi-lamp configurations
- Water-resistant 110-277V auto-sensing power supply
- Optional door interlock switch (TUV-INTLCK-SP)
- Produces no harmful ozone

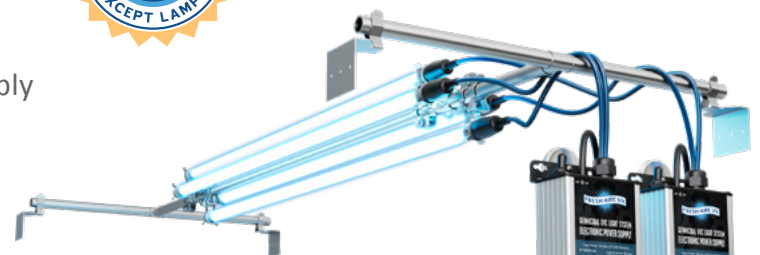
BENEFITS

- 99.9% surface disinfection GUARANTEED (coil)
- Sterilizes mold, bacteria, viruses
- Disinfects coil & drain pan
- Improves HVAC system efficiency (coil)
- Improves indoor air quality



Coil-Mount

For coils up to 144" x 144"
Everything needed for most installations is included in the box.



Duct-Mount

Use 1, 2, or 3 BTXL Dual Systems for duct-mounting parallel to the air stream for maximum airborne disinfection.

Control Box



Commercial Series Accessories

[View PDF](#)

UVC Radiometer



Safety Interlock Switch

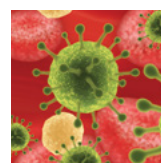


UVC Lamp Shield



BLUE-TUBE XL

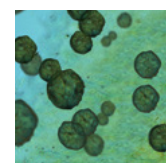
STERILIZES BIOLOGICAL PATHOGENS



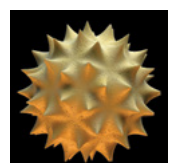
VIRUSES



BACTERIA



MOLD



ALLERGENS

WWW.FRESH-AIREUV.COM

BLUE-TUBE XL



COIL SIZING CHART FOR AHU UNITS

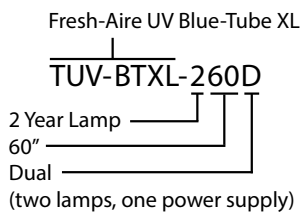
COIL WIDTH

COIL HEIGHT	COIL WIDTH										
	33"	40"	47"	56"	61"	72"	82"	98"	108"	120"	144"
24"	232S	232S	246S	246S	260S	260S	260S	246D	246D	260D	260D
32"	232S	232S	246S	246S	260S	260S	260S	246D	246D	260D	260D
40"	232S	232S	246S	246D	260S	260D	260D	246D (2)	246D (2)	260D	260D
56"	232D	232D	246D	246D	260D	260D	260D	246D (2)	246D (2)	260D (2)	260D (2)
62"	232D	232D	246D	246D	260D	260D	260D	246D (2)	246D (2)	260D (2)	260D (2)
72"	232D	232D	246D	246D	260D	260D	260D	246D (2)	246D (2)	260D (2)	260D (2)
82"	232D	232D	246D	246D	260D	260D	246D (2)	246D (3)	246D (3)	260D (3)	260D (3)
98"	232D (2)	232D (2)	246D (2)	246D (2)	260D (2)	260D (2)	246D (3)	246D (4)	246D (4)	260D (4)	260D (4)
108"	232D (2)	232D (2)	246D (2)	246D (2)	260D (2)	260D (2)	246D (3)	246D (4)	246D (4)	260D (4)	260D (4)
120"	232D (2)	232D (2)	246D (2)	246D (2)	260D (2)	260D (2)	246D (3)	246D (4)	260D (4)	260D (4)	260D (4)
144"	232D (2)	232D (2)	246D (2)	246D (2)	260D (2)	260D (4)	246D (4)	246D (4)	260D (4)	260D (4)	260D (4)

SIZING CHART FOR RTUS

1 - 3 Ton	4 - 5 Ton	6 - 10 Ton	12-14 Ton	16-20 Ton	25-30 Ton	35-40 Ton	45-50 Ton
TUV-200-DI or TUV-APCO-MAG15-ER2	TUV-200-DI or TUV-APCO-MAG15-ER2	232-S	246-S	246-D	260-D	260-D (2)	260D (3)

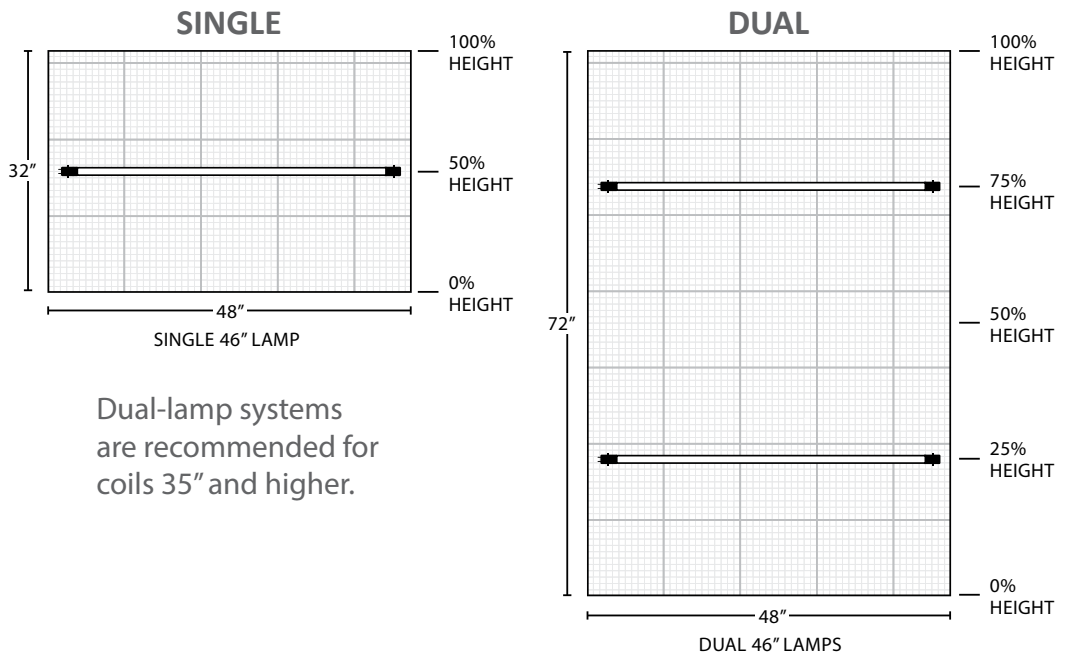
PART NUMBER KEY



- (2) = 2 Complete Systems
- (3) = 3 Complete Systems
- (4) = 4 Complete Systems



SINGLE & DUAL LAMP PLACEMENT



WWW.FRESH-AIREUV.COM

SALES@FRESH-AIREUV.COM 800.741.1195

DESIGNED & ASSEMBLED IN THE U.S.A.