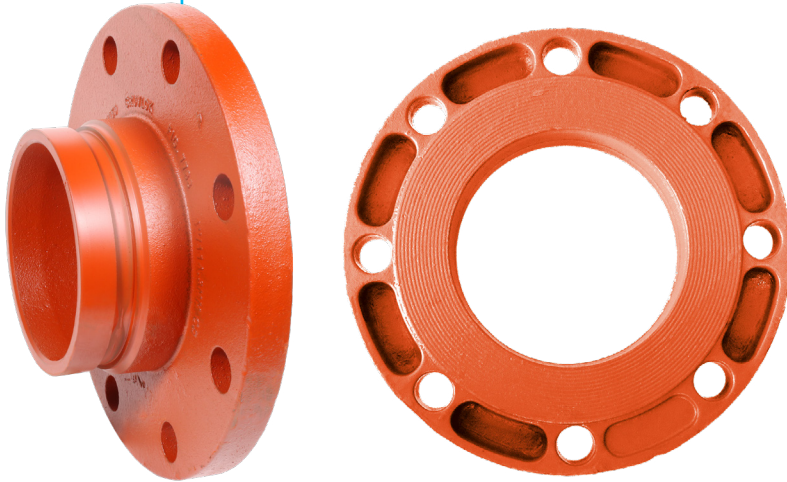


Gruvlok Flange Adapter Fig. 7788



Material Specifications

Housing

Ductile Iron conforming to ASTM A536, Grade 65-45-12

Coatings

Rust inhibiting paint - Color: Orange (standard), Red (optional)

Hot Dipped Zinc Galvanized (optional)

Other Colors Available
(IE: RAL3000 and RAL9000)

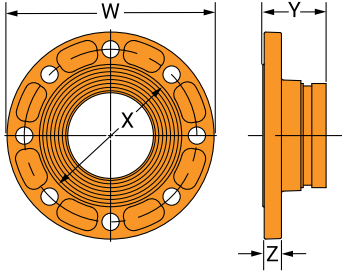
For other Coating requirements contact an ASC Engineered Solutions™ Representative for more information.

The Gruvlok Fig. 7788 Flange Adapter allows for direct connection of Class 125 or Class 150 flanged components to a grooved piping system. The Gruvlok Flange Adapter provides an alternative method of connecting to flanged components than the traditional Fig. 7012 Gruvlok Flange. The Gruvlok Flange Adapter provides a raised serrated face flange connection with a shorter overall length than Anvil's Fig. 7084 Flange x Groove Nipple.



| PROJECT INFORMATION | APPROVAL STAMP |
|---------------------|-------------------|
| Project: | Approved |
| Address: | Approved as noted |
| Contractor: | Not approved |
| Engineer: | Remarks: |
| Submittal Date: | |
| Notes 1: | |
| Notes 2: | |

Gruvlok Flange Adapter Fig. 7788



| Nominal Size | O.D. | Max. Working Pressure | Coupling Dimensions | | | | Qty. | Size | Coupling Bolts | | Specified Torque | | Approx. Wt. Ea. |
|-------------------------------------|-----------------|-----------------------|---|---|---------------------------------------|---|-------------|---|---|--------------------|------------------|------------|-----------------|
| | | | W | X | Y | Z | | | Bolt Circle Diameter | Bolt Hole Diameter | Min. | Max. | |
| In./DN(mm) | In./mm | PSI/bar | In./mm | In./mm | In./mm | In./mm | PN(10) (16) | In. (ISO)/mm | In./mm | In./mm | Ft.-Lbs/N-m | | Lbs./kg |
| 2 50 | 2.375 60.3 | 300 20.7 | 6 152.4 | 3 ⁵ / ₈ 91.9 | 2 ¹ / ₂ 63.5 | 1 ¹ / ₁₆ 17.5 | 4 | 5/8 x 2 ³ / ₄ M16 x 70 | 4 ³ / ₄ 120.7 | 3/4 19.1 | 110 149 | 140 190 | 4.39 2.0 |
| 2 ¹ / ₂ 65 | 2.875 73.0 | 300 20.7 | 7 177.8 | 4 ¹ / ₈ 104.6 | 2 ¹ / ₂ 63.5 | 3/4 19.1 | 4 | 5/8 x 2 ³ / ₄ M16 x 70 | 5 ¹ / ₂ 139.7 | 3/4 19.1 | 110 149 | 140 190 | 6.17 2.8 |
| 3 80 | 3.500 88.9 | 300 20.7 | 7 ¹ / ₂ 190.5 | 5 127.0 | 2 ¹ / ₂ 63.5 | 3/4 19.1 | 4 | 5/8 x 2 ³ / ₄ M16 x 70 | 6 152.4 | 3/4 19.1 | 110 149 | 140 190 | 7.19 3.3 |
| 4 100 | 4.500 114.3 | 300 20.7 | 9 228.6 | 6 ³ / ₁₆ 157.2 | 2 ³ / ₄ 69.9 | 3/4 19.1 | 8 | 5/8 x 2 ³ / ₄ M16 x 70 | 7 ¹ / ₂ 190.5 | 3/4 19.1 | 110 149 | 140 190 | 10.68 4.9 |
| 5 125 | 5.563 141.3 | 300 20.7 | 10 254.0 | 7 ⁵ / ₁₆ 185.7 | 2 ³ / ₄ 69.9 | 7/8 22.1 | 8 | 3/4 x 2 ⁷ / ₈ — | 8 ¹ / ₂ 215.9 | 7/8 22.2 | 220 298 | 250 339 | 13.99 6.4 |
| 6 150 | 6.625 168.3 | 300 20.7 | 11 279.4 | 8 ¹ / ₂ 215.9 | 2 ³ / ₄ 69.9 | 7/8 22.1 | 8 | 3/4 x 3 ¹ / ₈ M20 x 80 | 9 ¹ / ₂ 241.1 | 7/8 22.2 | 220 298 | 250 339 | 16.47 7.5 |
| 8* 200 | 8.625 219.1 | 300 20.7 | 13 ¹ / ₂ 342.9 | 10 ⁵ / ₈ 269.7 | 3 76.2 | 6 ¹ / ₆₄ 24.1 | 8 | 3/4 x 3 ¹ / ₄ M20 x 80 | 11 ³ / ₄ 298.5 | 7/8 22.2 | 220 298 | 250 339 | 24.79 11.3 |
| 10* 250 | 10.750 273.1 | 300 20.7 | 16 406.4 | 12 ³ / ₄ 323.9 | 3 ³ / ₈ 85.7 | 1 25.4 | 12 | 7/8 x 3 ¹ / ₂ M20 x 90 | 14 ¹ / ₄ 362.0 | 1 25.4 | 320 439 | 400 542 | 36.75 16.7 |
| 12* 300 | 12.750 323.9 | 300 20.7 | 19 482.6 | 15 381.0 | 3 ¹ / ₂ 88.9 | 1 ¹³ / ₆₄ 30.5 | 12 | 7/8 x 3 ³ / ₄ — | 17 431.8 | 1 25.4 | 320 439 | 400 542 | 56.31 25.6 |

Note:

*8", 10" and 12" Flange Adapters have a machined raise face. 2" through 6" Flange Adapters have a cast raised face.



asc-es.com

Building connections that last™