

Specifications

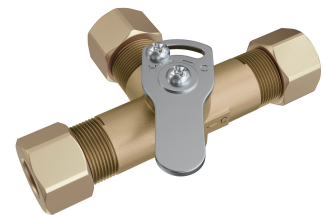
PFMVMS38

MIXING VALVE



Product Features

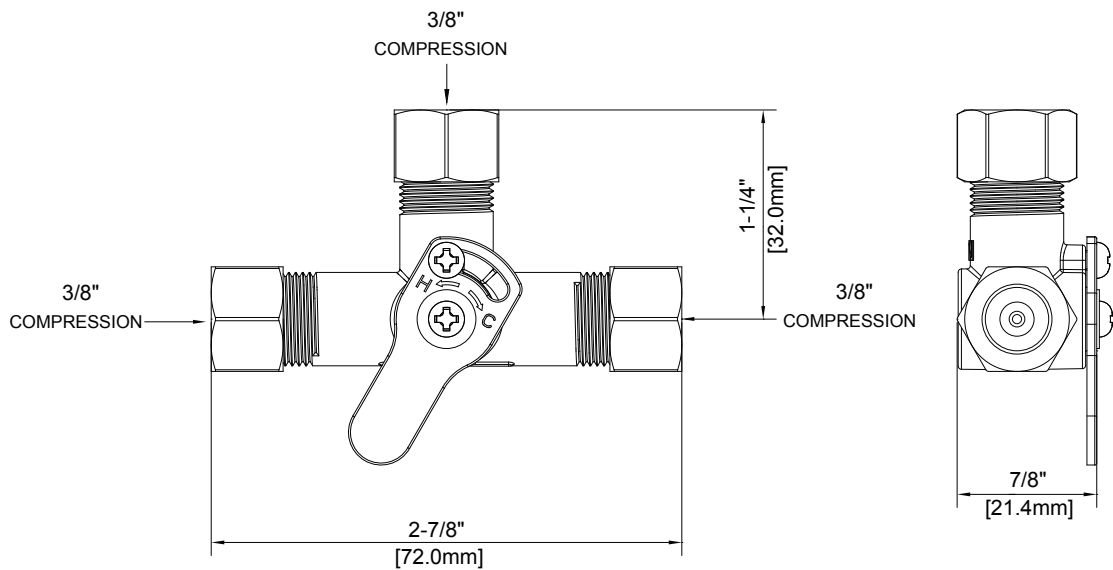
- 3/8" compression fittings
- Low-lead brass
- Check valves included
- Installs easily between the stop valves and faucet
- AB1953/NSF 61-9 compliant
- Meets: ASME A112.18.1 / CSA B125.1



PFMVMS38

Model Numbers

PFMVMS38



Warranty and Codes

This product comes complete with installation, operating, care and maintenance instructions. This PROFLO faucet carries a limited lifetime warranty when installed in residential applications. The warranty is five years in commercial applications. This product meets ANSI: A112.18.1M. Compliant with lead content requirements of US Senate Bill S.3874

