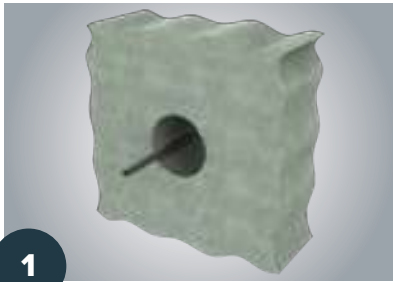


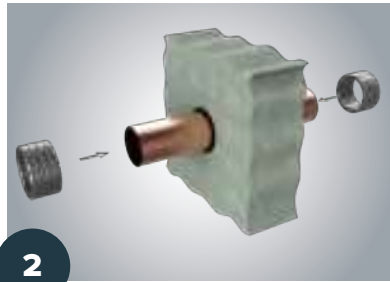
## Installation Instructions

### HoldRite® HydroFlame™ 100, 200, & 300CG

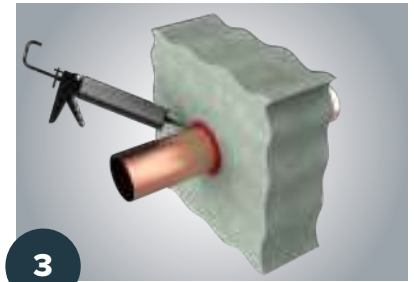
#### WALL INSTALLATION

**1**

Clean opening.

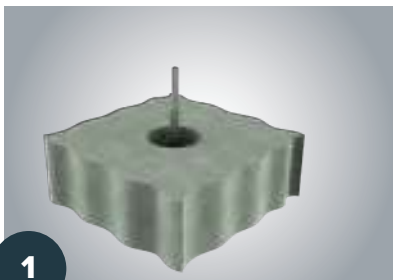
**2**

Install pipes or cables. Install backing material as required into annular space as shown to both sides of wall assembly.

**3**

Apply caulking as required to close remaining gap to both sides of wall assembly; providing a fire smoke and gas resistant seal. Spread caulking smoothly and evenly all around.

#### FLOOR INSTALLATION

**1**

Clean opening.

**2**

Install pipes or cables. Install backing material as required into annular space as shown on one side of floor assembly.

**3**

Apply caulking as required to close remaining gap to one side of floor assembly; providing a fire smoke and gas resistant seal. Spread caulking smoothly and evenly all around.