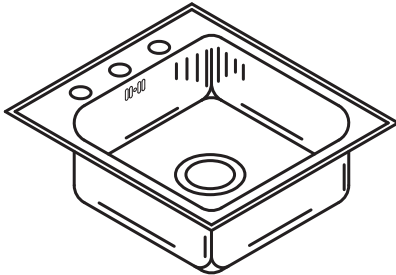


# SLF-ADA-2125-A-GR

STYLIST GROUP

ADA COMPLIANT

SINGLE COMPARTMENT - LEDGEBACK  
with INTEGRA-FLOW



OVERFLOW SHOWN  
AT REAR

7.26  
Gallon  
Capacity\*

## \*CAPACITY MATTERS

Max. I.D. sizing with straight-sided, non -tapered bowl configuration.  
Tight corner radius design. Capacity based on 6-1/2" depth.

## SPECIFICATION

Seamless die-drawn construction of 18 gauge type 304 stainless steel. Interior and top surfaces polished to a non-porous Hand Blended Just Finish. Fully coated underside insulate for sound and reduces condensation. Straight sided compartment with 1-3/4" radius corners provides greater capacity. Self-rimming top mount with Grip-Rim Plus with stainless steel mounting channels. Integra-flow overflow system. Drain punched for Just J-35-SSF drain. Certified to ASME A112.19.3/CSA B45.4; UPC; IPC.



U.S.  
ASME A112.19.3/CSA B45.4

Sink certified to ASME A112.19.3/CSA B45.4;  
Uniform Plumbing Code (UPC); International  
Plumbing Code (IPC), by NSF International.  
Certified with/without overflow, less fittings.

Sink certified compliant with 2010 ADA Standards for Accessible  
Design and ICC/ANSI A117.1 by NSF International.

☐ **TYPE 316 STAINLESS STEEL** (Check if applicable)

## CUTOUT DIMENSIONS

Model Number	Front-to-Back	Left-to-Right
SLF-ADA-2125-A-GR	20-1/4	24-1/4

APPROVED FOR MANUFACTURING

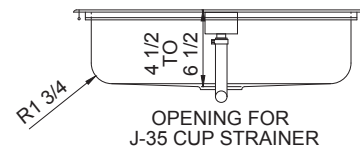
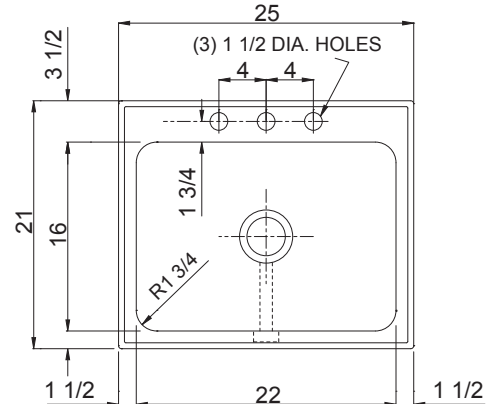
MODEL NO.: **SLF-ADA-2125-A-GR** QTY: \_\_\_\_\_

JOB NAME: \_\_\_\_\_

TAG/ITEM: \_\_\_\_\_

CUSTOMER: \_\_\_\_\_

SIGNATURE: \_\_\_\_\_



## FAUCET PUNCHING - MUST BE SPECIFIED

- ☐ (1) Hole Centered
- ☐ (2) Holes on 4" centers
- ☐ (3) Holes on 4" centers (illustrated)

☐ Alternate Punching:

Faucet Model: ☐ ☐

Punching Required:

## DEPTH - MUST BE SPECIFIED:

- ☐ 4 1/2" DEEP ☐ 5" DEEP ☐ 5-1/2" DEEP ☐ 6" DEEP ☐ 6-1/2" DEEP

## DRAIN LOCATION - MUST BE SPECIFIED:

- ☐ CENTER ☐ CENTER REAR ☐ LEFT REAR ☐ RIGHT REAR

## OVERFLOW LOCATION - MUST BE SPECIFIED:

- ☐ FRONT (SHOWN) ☐ REAR ☐ LEFT ☐ RIGHT



JUST MFG. COMPANY CONTINUES TO MAKE QUALITY AND FUNCTIONALITY A MARK OF THE JUST PRODUCT LINE. WE RESERVE THE RIGHT TO CHANGE PRODUCT INFORMATION WITHOUT NOTICE. DIMENSIONS MAY CHANGE AND MAY BE SUBJECT TO CHANGE WITHOUT NOTICE. NO RESPONSIBILITY IS ASSUMED FOR USE OF SUPERCEDED OR VOIDED DATA. JUST MFG. CO. SINKS ARE MADE IN THE U.S.A. WHEN COMPARING OTHER BRAND PRODUCTS, BE SURE TO COMPARE USA QUALITY ALONG WITH FEATURES AND DIMENSIONS.

JUST MANUFACTURING COMPANY

9233 KING STREET . FRANKLIN PARK . ILLINOIS . 60131-2111

PH: 847-678-5150

FAX: 847-678-6817

E-MAIL: [custserv@justmfg.com](mailto:custserv@justmfg.com)

[www.justmfg.com](http://www.justmfg.com)