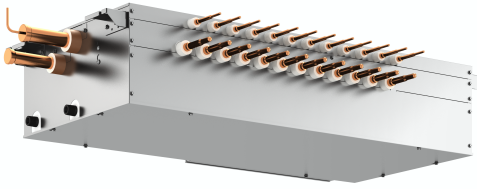


Job Name:

Schedule Reference:

Date:



Accessories

Branch pipe (Joint) - Between BC and indoor units

CMY-Y1025S-G2 - Total down-stream indoor unit capacity: -P72
 CMY-Y1021S-G2 - Total down-stream indoor unit capacity: P73-P96

Joint and Reducer - Between Main BC and Sub BC

CMY-R201S-G - Total down-stream indoor unit capacity: -P126
 CMY-R202S-G - Total down-stream indoor unit capacity: P127-P216
 CMY-R203S-G - Total down-stream indoor unit capacity: P217-P234
 CMY-R204S-G - Total down-stream indoor unit capacity: P235-P360
 CMY-R205S-G - Total down-stream indoor unit capacity: P361-

Reducer - Between outdoor units and BC

CMY-R302S-G1 - JA1 type (Outdoor unit capacity: P72-P336)

Reducer - Between Main BC and Sub BC

CMY-R303S-G1 - JA1 type (When using the Sub BC controller)

| Model | | CMB-P1012NU-JA1 | | | | | |
|--|-----------------------------|---|---|--|--|--------------------|----------------------|
| Number of branch | | 12 | | | | | |
| Power source | | 1-phase 208-230 V - 60 Hz | | | | | |
| Power input (208/230) | Cooling [Heating] | kW | | 0.198/0.255 [0.106/0.137] | | | |
| Current input (208/230) | Cooling [Heating] | A | | 0.95/0.11 [0.52/0.60] | | | |
| MCA (208/230) (*) | | A | | 1.19/1.39 | | | |
| External finish | | Galvanized steel plate (Lower part drain pan: Pre-coated galvanized sheets + powder coating) | | | | | |
| Connectable outdoor/heat source unit capacity | | P72 to P336 | | | | | |
| Indoor unit capacity connectable to 1 branch *11 | | Model P54 or smaller (Use optional joint pipe combing 2 branches when the total unit capacity exceeds P55.) | | | | | |
| External dimension H x W x D | | mm [in.] 250 x 1,135 x 545 [9-7/8 x 44-11/16 x 21-1/2] | | | | | |
| Refrigerant piping diameter | To outdoor/heat source unit | Connectable unit capacity | | High press. pipe | Low press. pipe | | |
| | | mm (in.) O.D. | P72 | 15.88 (5/8) Brazed | 19.05 (3/4) Brazed | | |
| | | mm (in.) O.D. | P96 | 19.05 (3/4) Brazed | 22.2 (7/8) Brazed | | |
| | | *12 mm (in.) O.D. | P120 | 19.05 (3/4) Brazed | 22.2 (7/8) Brazed or 28.58 (1-1/8) Brazed | | |
| | | mm (in.) O.D. | P144 to P192 | 22.2 (7/8) Brazed | 28.58 (1-1/8) Brazed | | |
| | | *12 mm (in.) O.D. | P216 | 22.2 (7/8) Brazed or 28.58 (1-1/8) Brazed | 28.58 (1-1/8) Brazed | | |
| | | *12 mm (in.) O.D. | P240 | 22.2 (7/8) Brazed or 28.58 (1-1/8) Brazed | 34.93 (1-3/8) Brazed | | |
| | | mm (in.) O.D. | P264 to P288 | 28.58 (1-1/8) Brazed | 34.93 (1-3/8) Brazed | | |
| | | *12 mm (in.) O.D. | P312 | 28.58 (1-1/8) Brazed | 34.93 (1-3/8) Brazed or 41.28 (1-5/8) Brazed | | |
| | | mm (in.) O.D. | P336 | 28.58 (1-1/8) Brazed | 41.28 (1-5/8) Brazed | | |
| | To indoor unit | Liquid pipe | | Gas pipe | | | |
| | | mm (in.) O.D. | Indoor unit Model 18 or smaller 6.35 (1/4) Brazed bigger than 18 9.52 (3/8) Brazed | | Indoor unit Model 18 or smaller 12.7 (1/2) Brazed bigger than 18 15.88 (5/8) Brazed (19.05 (3/4), 22.2 (7/8) with optional joint pipe used.) | | |
| | | To other BC controller | Total down-stream Indoor unit capacity | High press. pipe | Liquid pipe | Low press. pipe | |
| | | | mm (in.) O.D. | to P72 | 15.88 (5/8) Brazed | 9.52 (3/8) Brazed | 19.05 (3/4) Brazed |
| | | | mm (in.) O.D. | P73 to P108 | 19.05 (3/4) Brazed | 9.52 (3/8) Brazed | 22.2 (7/8) Brazed |
| | | | mm (in.) O.D. | P109 to P126 | 19.05 (3/4) Brazed | 12.7 (1/2) Brazed | 28.58 (1-1/8) Brazed |
| | | | mm (in.) O.D. | P127 to P144 | 22.2 (7/8) Brazed | 12.7 (1/2) Brazed | 28.58 (1-1/8) Brazed |
| | | | mm (in.) O.D. | P145 to P216 | 22.2 (7/8) Brazed | 15.88 (5/8) Brazed | 28.58 (1-1/8) Brazed |
| | | | mm (in.) O.D. | P217 to P234 | 28.58 (1-1/8) Brazed | 15.88 (5/8) Brazed | 28.58 (1-1/8) Brazed |
| | | | mm (in.) O.D. | P235 to P288 | 28.58 (1-1/8) Brazed | 19.05 (3/4) Brazed | 34.93 (1-3/8) Brazed |
| mm (in.) O.D. | P289 to P360 | 28.58 (1-1/8) Brazed | 19.05 (3/4) Brazed | 41.28 (1-5/8) Brazed | | | |
| mm (in.) O.D. | P361 or above | 34.93 (1-3/8) Brazed | 19.05 (3/4) Brazed | 41.28 (1-5/8) Brazed | | | |
| Field drain pipe size | in. | 3/4 NPT | | | | | |
| Net weight | kg (lbs) | 60 (133) | | | | | |
| Sound power level (measured in anechoic room) | | dB <A> | | 68 | | | |
| | Defrost | dB <A> | | 74 | | | |
| Sound pressure level (measured in anechoic room) | | dB <A> | | 50 | | | |
| | Defrost | dB <A> | | 56 | | | |

Notes:

- Installation/foundation work, electrical connection work, insulation work, power source switch, and other items shall be referred to the Installation Manual.
- The equipment is for R410A refrigerant.
- Install this product in a location where noise (refrigerant noise) emitted by the unit will not disturb the neighbors.
(For use in quiet environments with low background noise, position the BC CONTROLLER at least 5m away from any indoor units.)
- Sound pressure/power level differs depending on the connected outdoor/heat source unit capacity or operation condition. The sound pressure/power level at the rated operation is the value of the cooling mode.
- The sound pressure/power level values were obtained in an anechoic room. Actual sound pressure level is usually greater than that measured in anechoic room due to ambient noise and deflection sound.
- The sound pressure level values were obtained at the location below 1.5m from the unit.
- The solenoid valve switching sound is 56 dB (sound pressure level) regardless of the unit model.
- Refrigerant piping diameter for connection of plural indoor units with 1 branch shall be referred to the Installation Manual
- This unit is not designed for outside installations.
- When brazing the pipes, be sure to braze, after covering a wet cloth to the insulation pipes of the units in order to prevent it from burning and shrinking by heat.
- Indoor unit capacity connectable to 1 branch is changed depending on the indoor unit type and connection method. Please refer to the Installation Manual for more information
- For the refrigerant pipe size, refer to Installation Manual of outdoor units/heat source units.

Note: Mitsubishi Electric (MESCA) supports the use of only MESCA supplied and approved accessories for proper functioning of the unit(s). Use of non-MESCA supported accessories will affect warranty coverage.

Specifications are subject to change without notice.

* All electrical work shall comply with National (CEC) and local codes and regulations. Should this document be altered or changed without MESCA's permission, it becomes null and void. MESCA assumes no responsibility for any consequences in such cases.

Module: CMB-P1012NU-JA1- DIMENSIONS

Unit: mm (in.)

| | A | B | C | D | E |
|-----------------|----------------|---------------|----|--------------|--------------|
| CMB-P108NU-JA1 | 911(35-7/8) | 983(38-3/4) | 7 | 420(16-9/16) | 231(9-1/8) |
| CMB-P1012NU-JA1 | 1135(44-11/16) | 1207(47-9/16) | 11 | 660(26) | 343(13-9/16) |
| CMB-P1016NU-JA1 | 1135(44-11/16) | 1207(47-9/16) | 15 | 900(35-7/16) | 343(13-9/16) |

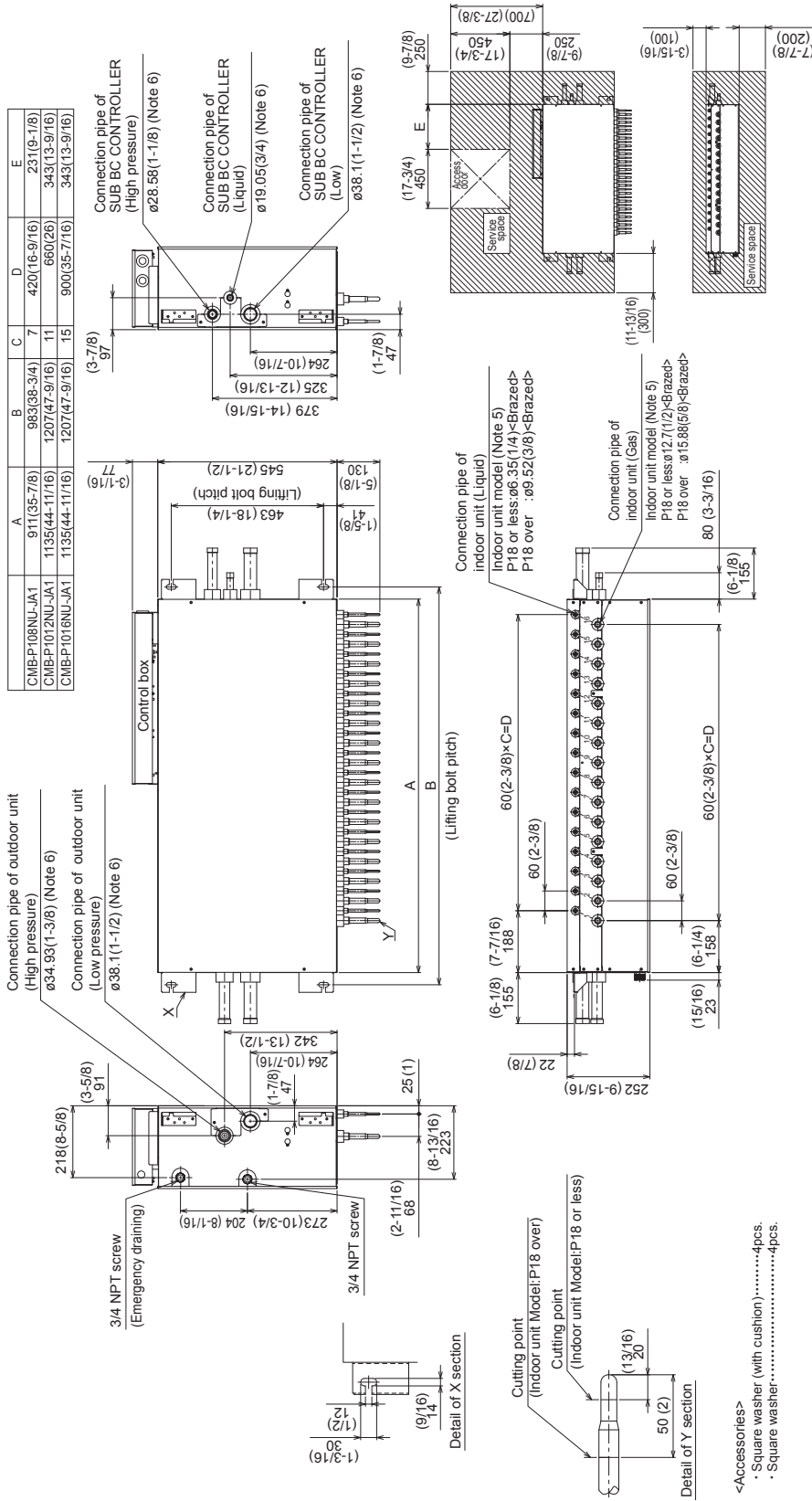


Table-1. To outdoor/heat source unit (Note 6)

| Connectable unit capacity | High press. Pipe | Low press. Pipe |
|---------------------------|-----------------------------|--------------------------------|
| P72 | ø15.88(5/8) | ø19.05(3/4) |
| P96 | ø19.05(3/4) | ø22.2(7/8) |
| P120 | ø19.05(3/4) | ø22.2(7/8) or ø28.58(1-1/8) |
| P144 to P192 | ø22.2(7/8) | ø28.58(1-1/8) |
| P216 | ø22.2(7/8) or ø28.58(1-1/8) | ø28.58(1-1/8) |
| P240 | ø22.2(7/8) or ø28.58(1-1/8) | ø34.93(1-3/8) |
| P264 to P288 | ø28.58(1-1/8) | ø34.93(1-3/8) or ø41.28(1-5/8) |
| P312 | ø28.58(1-1/8) | ø41.28(1-5/8) |
| P336 | ø28.58(1-1/8) | ø41.28(1-5/8) |

Table-2. To other BC controller (Note 6)

| Total downstream Indoor unit capacity | High press. Pipe | Liquid Pipe | Low press. Pipe |
|---------------------------------------|------------------|-------------|-----------------|
| ~P72 | ø15.88(5/8) | ø9.52(3/8) | ø19.05(3/4) |
| P73~108 | ø19.05(3/4) | ø9.52(3/8) | ø22.2(7/8) |
| P109~126 | ø19.05(3/4) | ø12.7(1/2) | ø28.58(1-1/8) |
| P127~144 | ø22.2(7/8) | ø12.7(1/2) | ø28.58(1-1/8) |
| P145~216 | ø22.2(7/8) | ø15.88(5/8) | ø28.58(1-1/8) |
| P217~234 | ø28.58(1-1/8) | ø15.88(5/8) | ø28.58(1-1/8) |
| P235~288 | ø28.58(1-1/8) | ø19.05(3/4) | ø34.93(1-3/8) |
| P289~360 | ø28.58(1-1/8) | ø19.05(3/4) | ø41.28(1-5/8) |
| P361~ | ø34.93(1-3/8) | ø19.05(3/4) | ø41.28(1-5/8) |

- Note 1. Suspension bolt(ø10) and nut(M10) prepare in the field.
 2. Take notice of service space as shown.
 (Please give attention not to occupy service space by letting ducts and pipes through.)
 3. Please take service space for connection pipe of SUB BC CONTROLLER.
 4. Install this product in a location where noise (refrigerant noise) emitted by the unit will not disturb the neighbors.
 (For use in quiet environments with low background noise, position the BC CONTROLLER at least 5m away from any indoor units.)
 5. Refer to the Installation Manual for refrigerant piping diameter size when connecting plural indoor units with 1 branch.
 6. Refer to the Table-1.2 connection pipe of outdoor unit or SUB BC CONTROLLER diameter size.
 7. Refer to the Installation Manual for insulation of connection pipe and drain piping.
 8. Do not place the BC controller directly on the floor.

<Accessories>
 • Square washer (with cushion).....4pcs.
 • Square washer.....4pcs.

*For the refrigerant pipe size, refer to Installation Manual of outdoor units/heat source units.

Should this document be altered or changed without MESCA's permission, it becomes null and void. MESCA assumes no responsibility for any consequences in such cases.

