

THERMOSTATIC SHOWER VALVE TRIM

SKU: 948913



CONTENTS

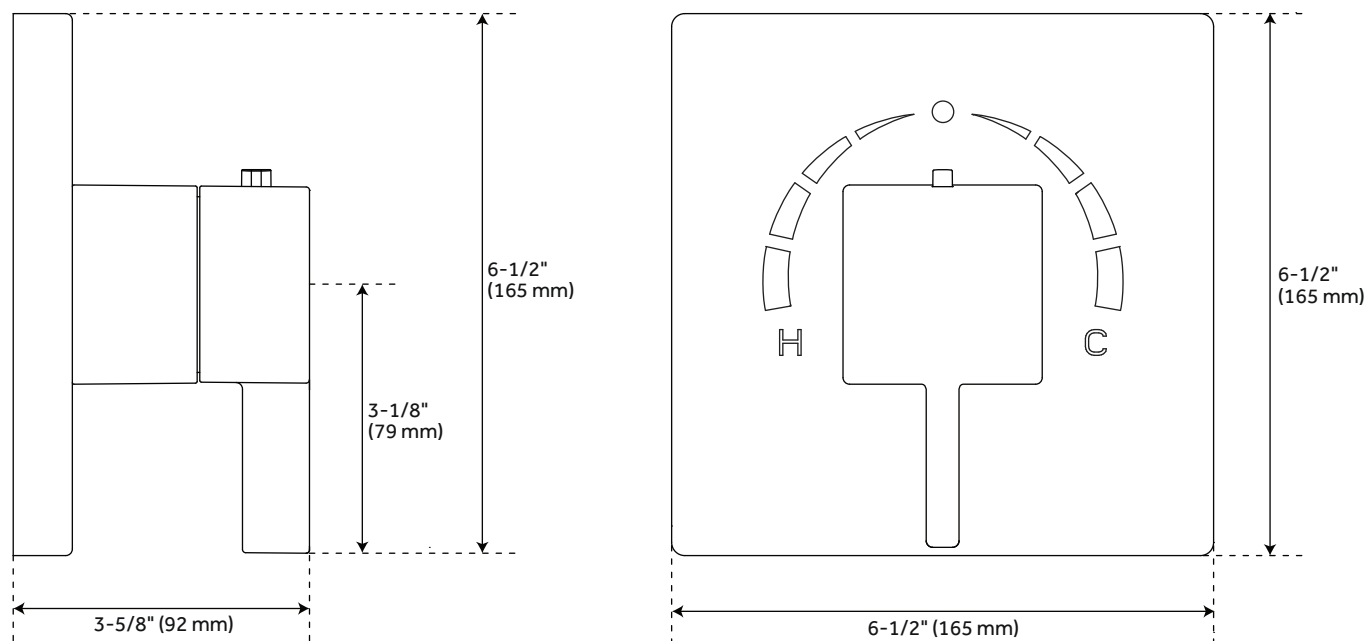
TRIM	PAGE 2
ROUGH-IN VALVE	PAGE 3

FEATURES

- Material: Brass
- Shape: Square
- Design: Modern
- Handle Type: Lever
- Features: Thermostatic
- Assembly Required: No
- Installation Type: Wall Mount
- Metal Lever Handle
- Temperature Outlet Factory Preset to 104 Degrees Fahrenheit
- Temperature Can Be Easily Adjusted Up and Down to User's Comfort Level
- Scald Guard Protection
- High Temperature Limit Stop
- Thermostatic Technology Keeps Shower Temperature Within 1 Degree Celsius
- For Proper Installation, Requires Use of Volume Control Valve and Trim
- Optional Rough-In Valve

THERMOSTATIC SHOWER VALVE TRIM

SKU: 948913



FEATURES

Width: 6-1/2"
Height: 6-1/2"
Depth: 3-5/8"
Wall Thickness Range: 1" to 1-3/4"

CODES/STANDARDS

cUPC
ASME A112.18.1/CSA B125.1
ADA compliant (when installed
according to ADA standards)
Massachusetts Accepted

PRODUCT IMAGE

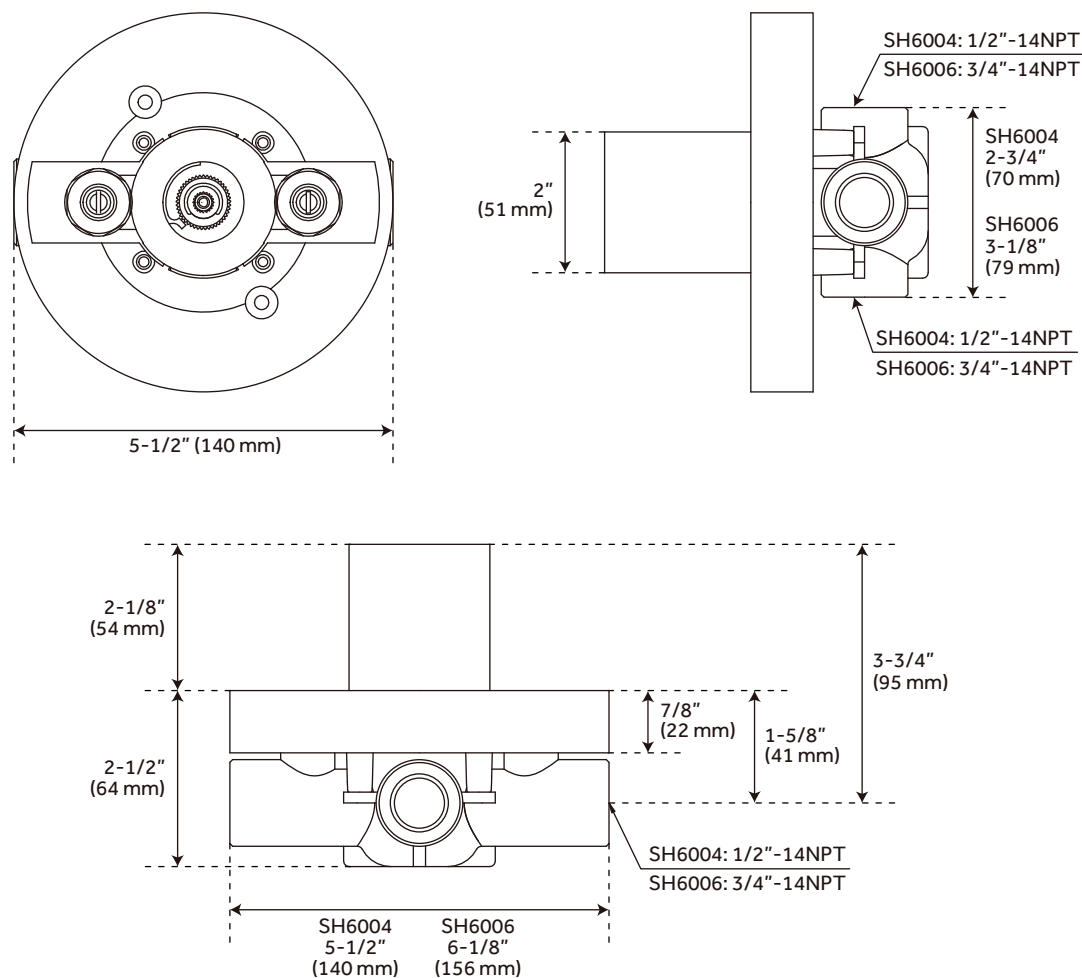


All dimensions and specifications are nominal and may vary. Use actual products for accuracy in critical situations.

PAGE 2
Code: SHRI9009

OPTIONAL THERMOSTATIC ROUGH-IN VALVE WITH 1/2" -OR- 3/4" CONNECTION

SKU: 948913



FEATURES

- Bronze Valve Body
- Ceramic Cartridge
- Integral Water Stops and Check Valve
- Must be Installed in Accordance With Provided Installation Instructions
- Recommended Valve Installation Depth 1-5/8" to 2-3/8"

CODES/STANDARDS

- cUPC
- ASME A112.18.1/CSA B125.1
- ASSE 1016 Type T
- Massachusetts Accepted

PRODUCT IMAGE



All dimensions and specifications are nominal and may vary. Use actual products for accuracy in critical situations.

PAGE 3
Code: SH6004, SH6006