

# GREYFIELD

## SINGLE-HOLE BATHROOM FAUCET

SKU: 948574



### FEATURES

- Installation Type: Single-Hole
- Overflow Hole: Yes
- Design: Modern
- Hot And Cold Indicators: No
- Drain Included: Yes
- Drain is Only Compatible With Sinks That Have an Overflow
- Included Deck Plate Converts Faucet From a Single-hole Installation to a 4" Centerset Spread
- Metal Handle

### CONTENTS

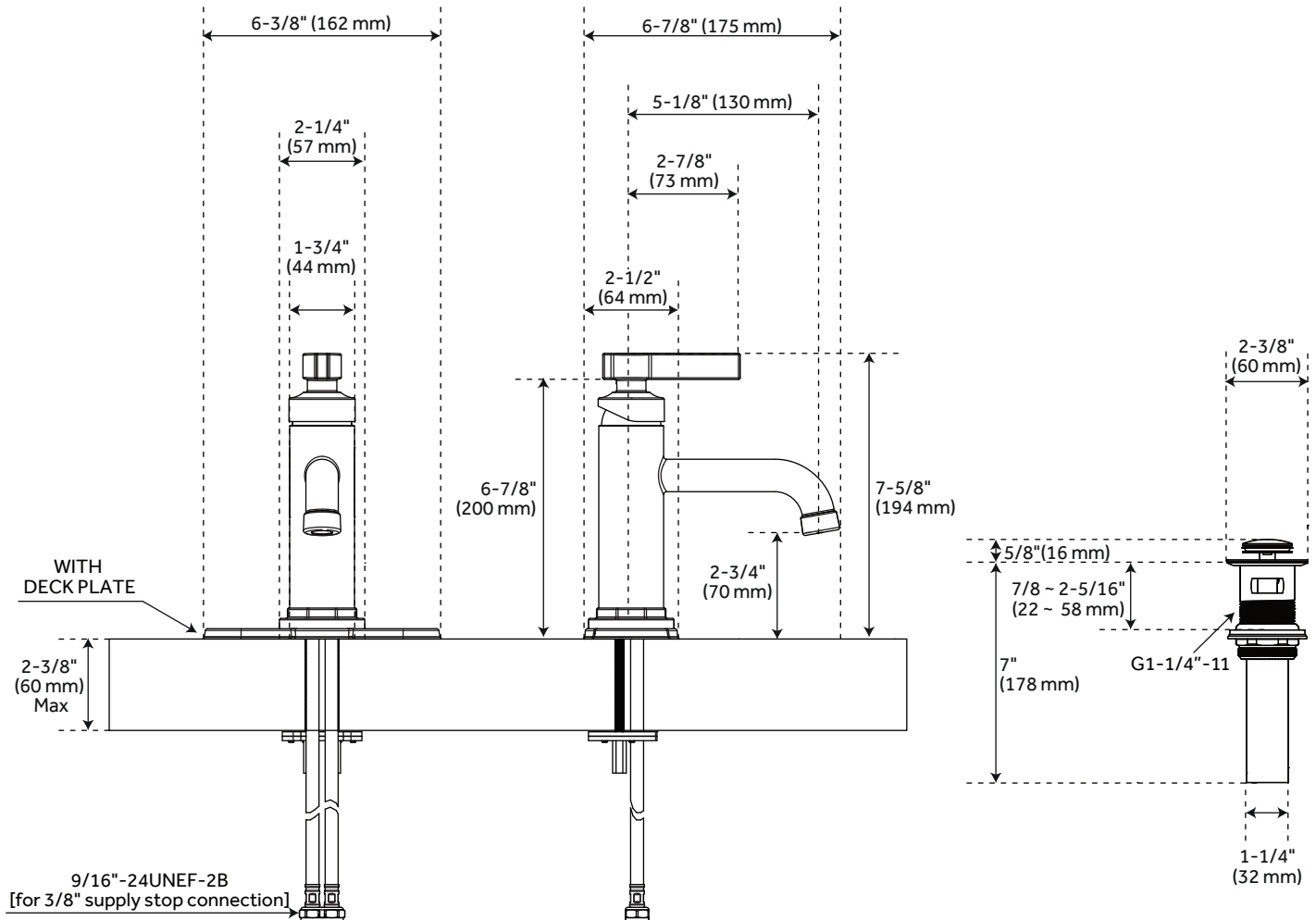
FAUCET (WITH DECK PLATE)	.....	PAGE 2
FAUCET (WITHOUT DECK PLATE)	.....	PAGE 3

REVISED 04/02/2021

# GREYFIELD

## SINGLE-HOLE BATHROOM FAUCET - WITH DECK PLATE

SKU: 948574



### FEATURES

Max. Countertop Thickness: 2-3/8"  
 Length: 6-3/8"  
 Width: 6-7/8"  
 Height: 7-5/8"  
 Height to Spout: 2-3/4"  
 Spout Reach: 5-1/8"  
 Base Plate Length: 6-3/8"  
 Base Plate Width: 2-1/2"  
 Handle Length: 2-7/8"  
 Height to Bottom of Handle: 6-7/8"  
 IPS: 1/2"  
 Fits Drain Hole Size: 1-1/2"

### CODES/STANDARDS

cUPC  
 ASME A112.18.1/CSA B125.1  
 NSF/ANSI 61  
 NSF/ANSI 372  
 ICC/ANSI A117.1 (when installed  
 according to ADA standards)  
 WaterSense  
 CEC Listed  
 CALGreen  
 Massachusetts Accepted



### PRODUCT IMAGE



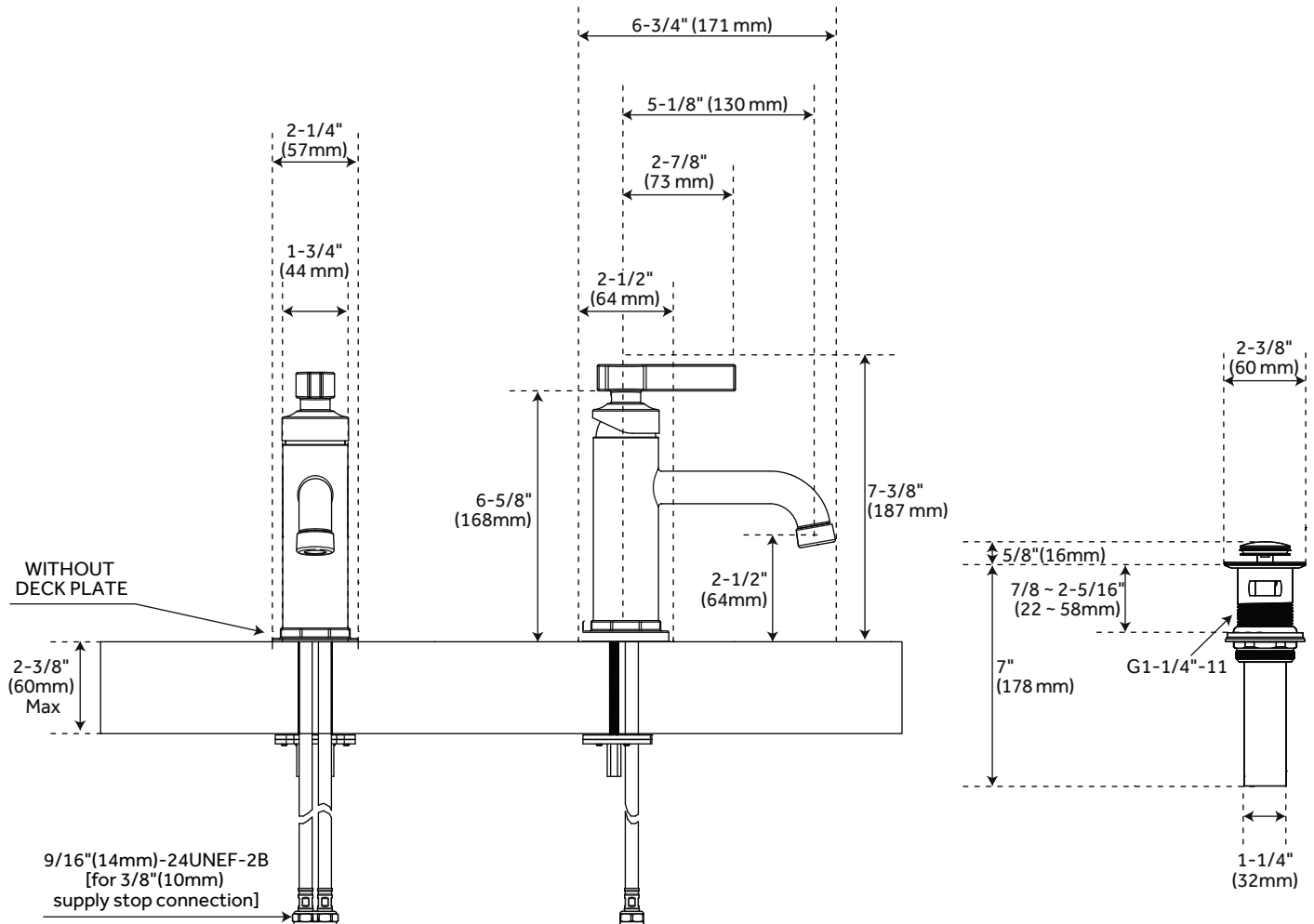
All dimensions and specifications are nominal and may vary. Use actual products for accuracy in critical situations.

PAGE 2  
Code: SHWSCGF100

# GREYFIELD

## SINGLE-HOLE BATHROOM FAUCET - WITHOUT DECK PLATE

SKU: 948574



### FEATURES

Max. Countertop Thickness: 2-3/8"  
 Length: 2-1/4"  
 Width: 6-3/4"  
 Height: 7-3/8"  
 Height to Spout: 2-1/2"  
 Spout Reach: 5-1/8"  
 Base Plate Length: NA  
 Base Plate Width: 2-1/2"  
 Handle Length: 2-7/8"  
 Height to Bottom of Handle: 6-5/8"  
 IPS: 1/2"  
 Fits Drain Hole Size: 1-1/2"

### CODES/STANDARDS

cUPC  
 ASME A112.18.1/CSA B125.1  
 NSF/ANSI 61  
 NSF/ANSI 372  
 ICC/ANSI A117.1 (when installed  
 according to ADA standards)  
 WaterSense  
 CEC Listed  
 CALGreen  
 Massachusetts Accepted



### PRODUCT IMAGE



All dimensions and specifications are nominal and may vary. Use actual products for accuracy in critical situations.

PAGE 3  
Code: SHWSCGF100