

# GUNTHER WIDESPREAD BATHROOM FAUCET

SKU: 953079



## CODES/STANDARDS

ASME A112.18.1/CSA B125.1

NSF/ANSI 372

NSF/ANSI 61



## FEATURES

Installation Type: Widespread

Design: Industrial

Length: 14-1/16"

Width: 6-15/16"

Height: 4-5/16"

Base Plate Diameter: 2-1/16"

Faucet Centers: 8"

Overflow Hole: Yes

Fits Drain Hole Size: 1-1/2"

Drain Included: Yes

Faucet Material: Brass

Handle Type: Lever

Handle Length: 3"

IPS: 1-1/2"

Flow Rate: 1.2 gpm (4.5 l/min) @ 60 psi

Height To Spout: 2-9/16"

Spout Reach: 5-1/2"

Handle Height: 1-5/8"

Ceramic Disc Cartridges: Yes

Hot and Cold Indicators: No

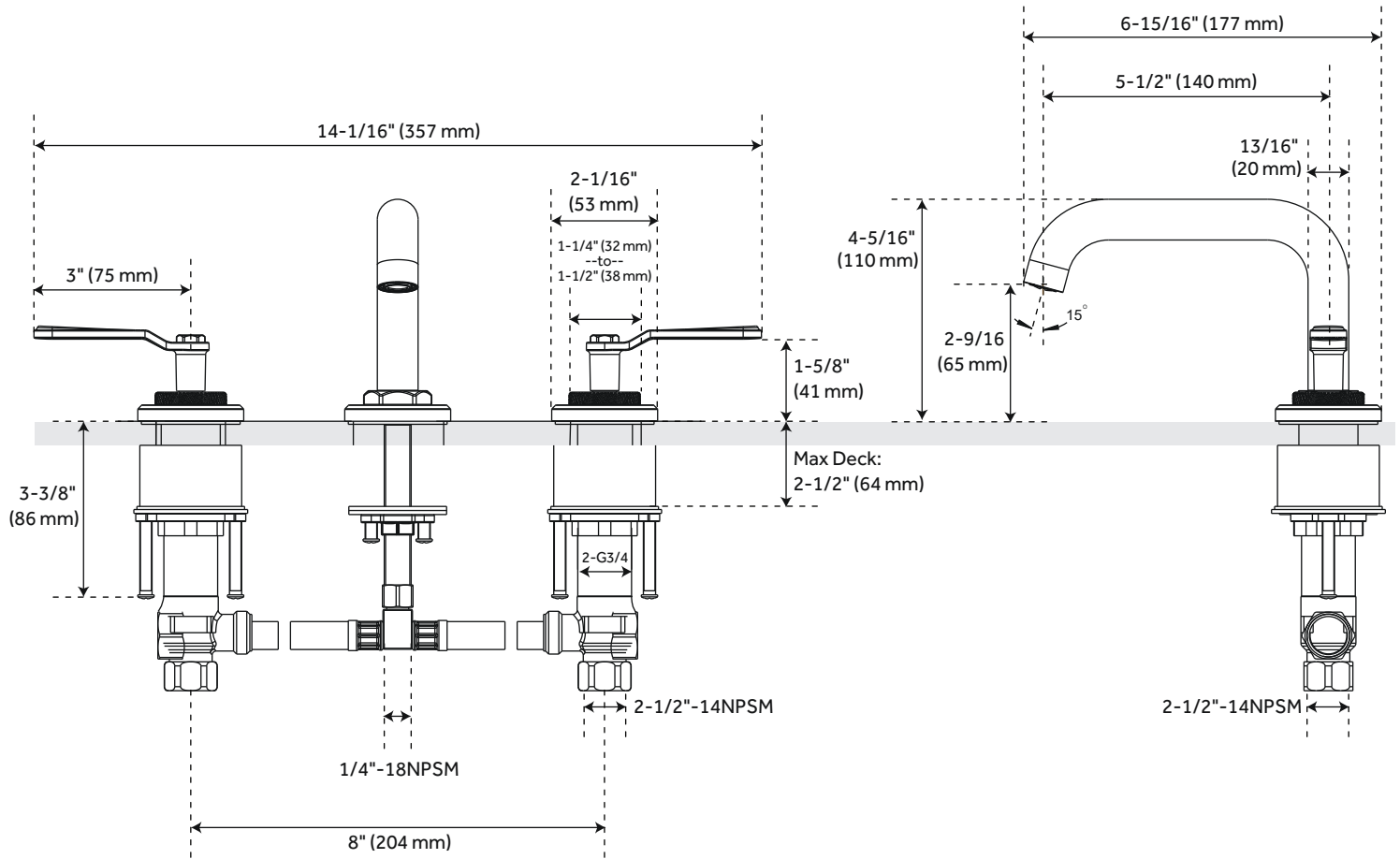
Code:

REVISED 2/3/2022

# GUNTHER

## WIDESPREAD SINK FAUCET

SKU: 953079



All dimensions and specifications are nominal and may vary. Use actual products for accuracy in critical situations.

Code: SHWSCGU800