

# PARTS LIST

# CONTENTS

## PARTS LIST

<b>1. Precautions.....</b>	<b>01-1</b>
<b>2. Outdoor unit parts list.....</b>	<b>01-2</b>
2-1. Models: AOU36RLAVM4, AOU48RLAVM4, and AOU60RLAVM4 .....	01-2

# 1. Precautions

When you start servicing, pay attention to the following points. For detailed precautions, refer to the installation manual of the products.

## **⚠ CAUTION**

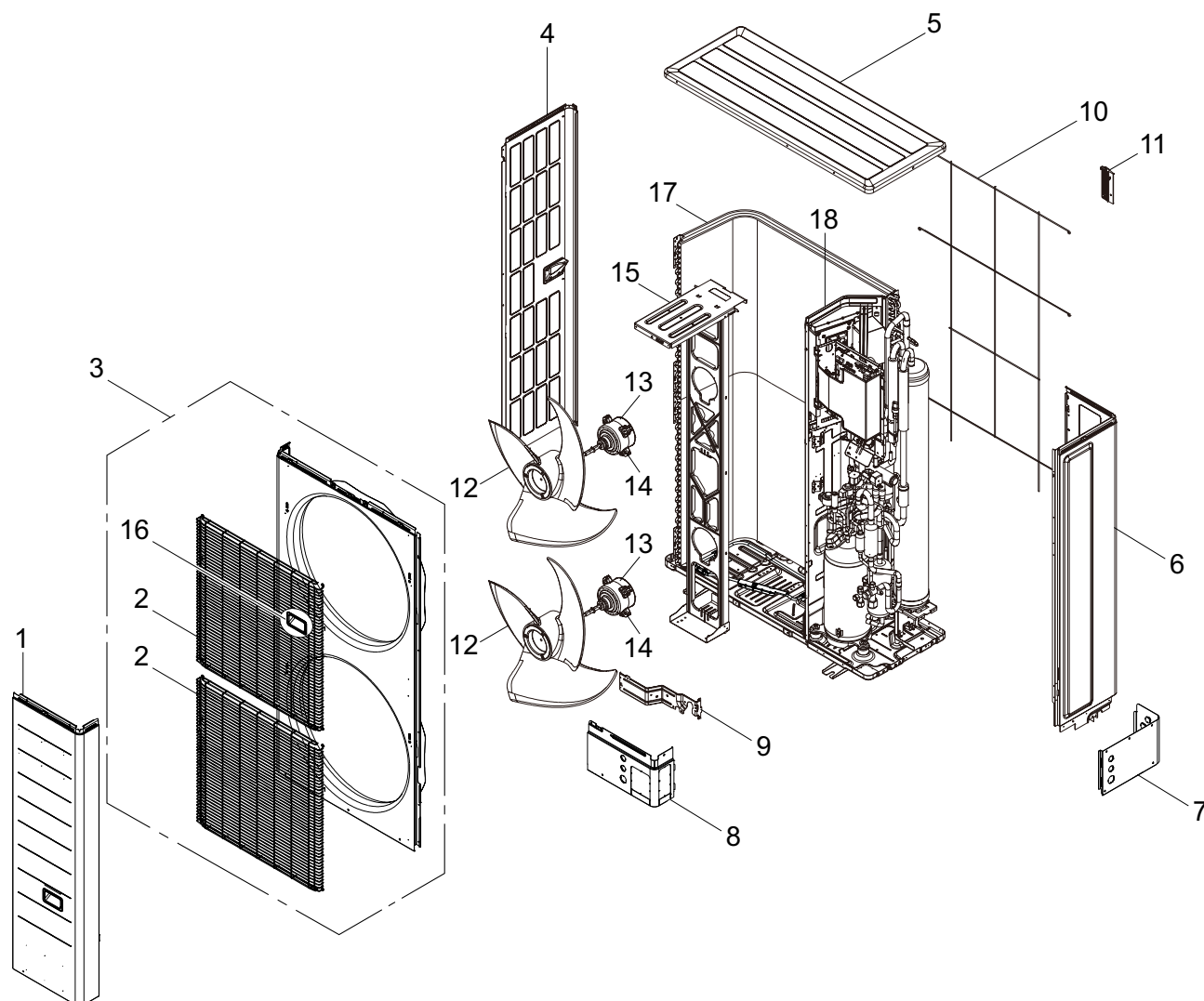
---

- Service personnel
    - Any person who is involved with working on or breaking into a refrigerant circuit should hold a current valid certificate from an industry-accredited assessment authority, which authorizes their competence to handle refrigerants safely in accordance with an industry recognized assessment specification.
    - Servicing shall only be performed as recommended by the equipment manufacturer. Maintenance and repair requiring the assistance of other skilled personnel shall be carried out under the supervision of the person competent in the use of flammable refrigerants.
    - Servicing shall be performed only as recommended by the manufacturer.
  - Work
    - Work in confined spaces shall be avoided.
    - The area around the workspace shall be sectioned off.
    - Electric shock may occur. After turning off the power, always wait 5 minutes before touching electrical components.
    - Do not touch the fins of the heat exchanger. Touching the heat exchanger fins could result in damage to the fins or personal injury such as skin rupture.
    - Do not place any other electrical products or household belongings under the product.
    - Condensation dripping from the product might get them wet, and may cause damage or malfunction to the property.
- 
- Service parts information and design are subject to change without notice for product improvement.
  - For the latest information of the service parts, refer to our Service Portal.  
<https://fujitsu-general.force.com/portal/>
  - Precise figure of the service parts listed in this manual may differ from the actual service parts.

## 2. Outdoor unit parts list

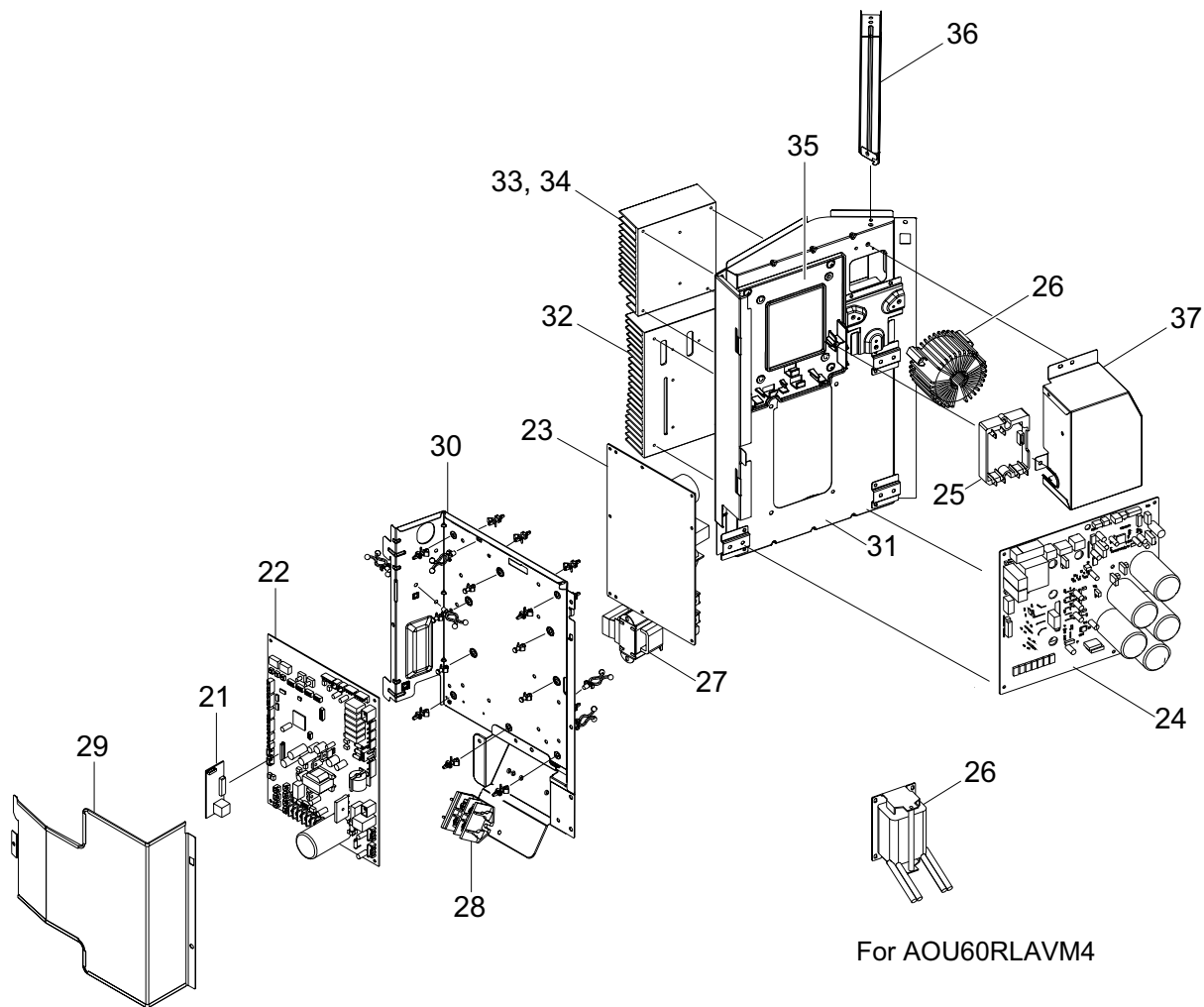
### 2-1. Models: AOU36RLAVM4, AOU48RLAVM4, and AOU60RLAVM4

#### ■ Exterior parts and chassis



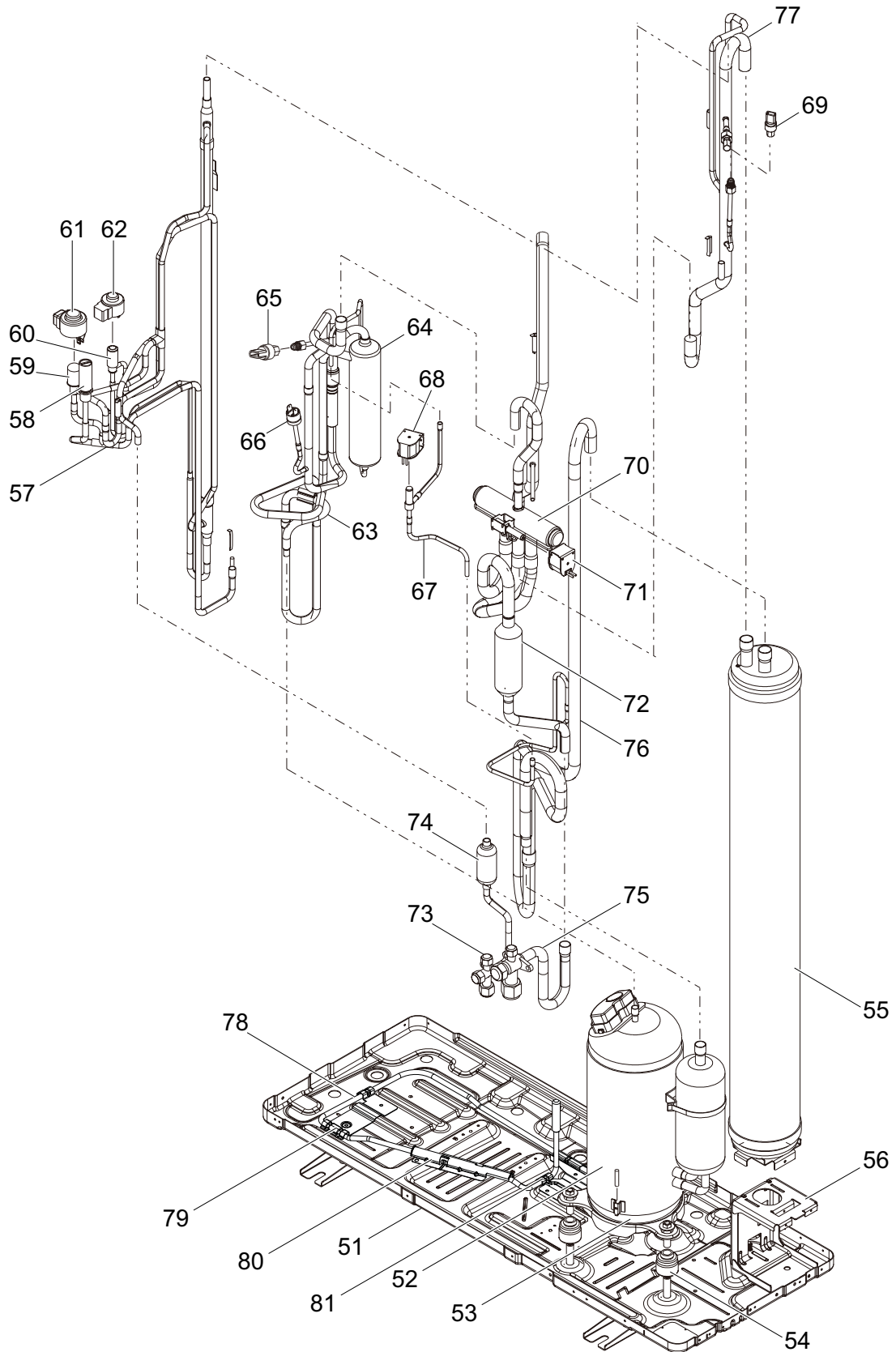
Item no.	Part no.			Part name	Service part
	AOU36RLAVM4	AOU48RLAVM4	AOU60RLAVM4		
1	9380571025	9380571025	9380571025	Service panel sub assy	◆
2	9382179007	9382179007	9382179007	Fan guard	◆
3	9380569022	9380569022	9380569022	Front panel sub assy	◆
4	9380568001	9380568001	9380568001	Cabinet left sub assy	◆
5	9379416016	9379416016	9379416016	Top panel sub assy	◆
6	9380570028	9380570028	9380570028	Cabinet right sub assy	◆
7	9384171009	9384171009	9384171009	Pipe cover rear	◆
8	9384170002	9384170002	9384170002	Pipe cover front	◆
9	9379409018	9379409018	9379409018	Valve plate	◆
10	9378926042	9378926042	9378926042	Protective net	◆
11	9374177011	9374177011	9374177011	Thermo holder	◆
12	9379414005	9379414005	9379414005	Propeller fan	◆
13	9603794019	9603794019	9603496012	Motor,DC brushless	◆
14	9380530008	9380530008	—	Cushion rubber	◆
15	9380566007	9380566007	9380566045	Motor bracket sub assy	◆
16	9381039005	9381039005	9381039005	Grip (front)	◆
17	9380633006	9380633006	9380633006	Condenser sub assy	◆
18	9380567004	9380567004	9380567004	Separate Wall sub assy	◆
—	9380477006	9380477006	9380477006	Label (FUJITSU)	—
—	9380479000	9380479000	9380479000	Label (AIRSTAGE)	—

■ Inverter unit



Item no.	Part no.			Part name	Service part
	AOU36RLAVM4	AOU48RLAVM4	AOU60RLAVM4		
21	9709612033	9709612033	9709612033	Communication PCB	◆
22	9708853208	9708853208	9708853208	Main PCB	◆
23	9709911198	9709911198	9709911204	Filter PCB	◆
24	9709685815	9709685815	9709685822	Inverter PCB (IPM) (service unit)	◆
25	9708920009	9708920009	9708590004	Actpm	◆
26	9900624019	9900624019	9900592011	Choke coil	◆
27	9900481025	9900481025	9900481025	Reactor assy	◆
28	9900428105	9900428105	9900428105	Terminal	◆
29	9378930025	9378930025	9378930025	Control cover sub assy	◆
30	9380543008	9380543008	9380543008	Control box (main) assy	◆
31	9380540014	9380540014	9380540021	Control box (inv) assy	◆
32	9380483014	9380483014	9380483014	Heat sink C	◆
33	9380484004	9380484004	—	Heat sink B	◆
34	—	—	9380484011	Heat sink D	◆
35	9380499015	9380499015	9380499022	Holder (heat sink)	◆
36	9380496007	9380496007	9380496007	Bracket control box	◆
37	9380493006	9380493006	—	Duct A	◆

# Compressor





Item no.	Part no.			Part name	Service part
	AOU36RLAVM4	AOU48RLAVM4	AOU60RLAVM4		
51	9379427128	9379427128	9379427128	Base assy	◆
52	9374423262	9374423262	9374423262	Compressor sub assy	◆
53	9901076022	9901076022	9901076022	Belt heater	◆
54	9378071018	9378071018	9378071018	Rubber sheet A (comp)	◆
55	9372700051	9372700051	9372700051	Accumulator sub assy	◆
56	9380471004	9380471004	9380471004	Installation plate (accumulator)	◆
57	9378749238	9378749238	9378749238	Sub cool hex assy	◆
58	9380544012	9380544012	9380544012	Relief valve assy	◆
59	9900170066	9900170066	9900170066	Expansion valve (EEV 1)	◆
60	9900056049	9900056049	9900056049	Expansion valve (EEV 2)	◆
61	9970098055	9970098055	9970098055	Coil (expansion valve) (EEV 1)	◆
62	9970096075	9970096075	9970096075	Coil (expansion valve) (EEV 2)	◆
63	9371581347	9371581347	9371581347	Discharge pipe assy	◆
64	9380553007	9380553007	9380553007	Oil separator	◆
65	9970178030	9970178030	9970178030	Sensor (HP)	◆
66	9900520014	9900520014	9900520014	Pressure switch	◆
67	9380016021	9380016021	9380016021	Solenoid valve assy	◆
68	9900189266	9900189266	9900189266	Solenoid (SV2)	◆
69	9900505103	9900505103	9900505103	Sensor (LP)	◆
70	9374425518	9374425518	9374425518	4-way valve	◆
71	9970113093	9970113093	9970113093	Solenoid (4-way valve)	◆
72	9380559009	9380559009	9380559009	Strainer assy	◆
73	9380025030	9380025030	9380025030	3-way valve B assy	◆
74	9372524039	9372524039	9372524039	Strainer assy	◆
75	9380631002	9380631002	9380631002	3-way valve assy	◆
76	9372514160	9372514160	9372514160	Suction pipe A assy	◆
77	9380005049	9380005049	9380005049	Inlet pipe (accum) assy	◆
78	9900919016	9900919016	9900919016	Heater (base)	◆
79	9382202002	9382202002	9382202002	Heater holder L	◆
80	9382203009	9382203009	9382203009	Heater holder C	◆
81	9382201005	9382201005	9382201005	Heater holder R	◆
—	9380513001	9380513001	9380513001	Compressor cover A	—
—	9380516026	9380516026	9380516026	Compressor cover top	—
—	9900805029	9900805029	9900805029	Thermistor assy (discharge temp.+comp. temp.)	—
—	9900506018	9900506018	9900506018	Thermistor assy (sub cool hex. temp. liquid/ Gas.)	—
—	9900507022	9900507022	9900507022	Thermistor assy (suction temp.+Heat ex. temp.)	—
—	9900747039	9900747039	9900747039	Thermistor assy (outdoor temp.)	—