

ACCUTRAK™ 5004/5044 ROTARY POSITION MONITORS

INTRINSICALLY SAFE – NEC

Fully integrated rotary valve position monitors that are certified for intrinsically-safe applications when used with approved IS barriers



FEATURES

- Inductive NAMUR sensor rated for IS applications.
- Magnum switches with rhodium contacts for use with low power I/O's for longer contact life.
- Strong durable Beacon™ offers 360° visual indication in a choice of styles and colors.
- Touch set cams are hand adjustable, spring loaded and self-locking providing quick calibration of position switches and sensors.
- Terminal strips are pre-wired and numbered with generous working space for ease of use.
- Additional conduit for easy field wiring and mounting accessories as standard.
- Standardized mounting pattern for easy adaptation to common bracketry.
- NAMUR shaft output compliant to VDI/VDE 3845 available.
- Engineered resin enclosure is robust, lightweight and provides exceptional chemical, UV and impact resistance.
- Aluminum enclosures with ultra-low copper content (0.2% maximum) ensure robust performance in corrosive environments.
- Rugged stainless steel enclosure option

TECHNICAL DATA

Agency approvals

Area classification (NEC 500)

Class I, II & III, Division 1, Groups A, B, C, D, E, F & G /
T6 Ta = 60°C (Entity) when operated through approved
IS barriers

Enclosure standards (ANSI/NEMA 250)

Type 4, 4X

Switches

Models 5004/5044

Pepperl + Fuchs model NJ2-V3-N
V3 mechanical switches, SPDT with gold-plated contacts
Magnum SPDT hermetically sealed switches with
rhodium contacts

Enclosures

Model 5004

Model 5044

Aluminum
Engineered resin
Stainless steel

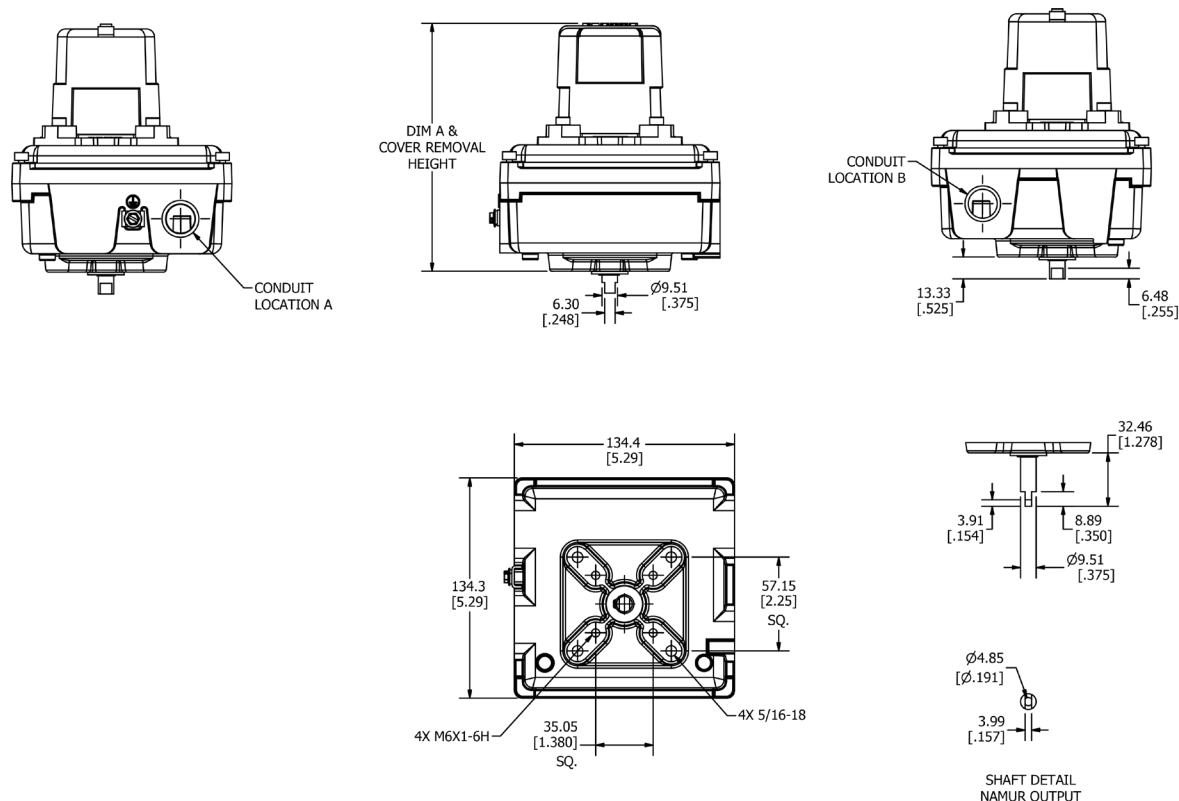
GENERAL APPLICATION

AccuTrak position monitors are ideal for manual and automated rotary valves. They provide consistent and accurate valve monitoring in a compact unit which can be mounted directly or via a valve actuator.

ACCUTRAK™ ROTARY POSITION MONITORS

INTRINSICALLY SAFE – NEC

MODEL 5004/5044 DIMENSIONS



Dimensions in inches, where available metric dimension (mm) in parentheses

TECHNICAL SPECIFICATIONS

Materials of construction

Enclosure

Model 5004	Aluminium with powder coat finish
Model 5044	Engineered polyamide resin

Shaft and hardware

	Stainless steel
--	-----------------

Bushing

Model 5004	Oil impregnated bronze
Model 5044	Nylon

Beacon visual indicator

	Co-polyester
--	--------------

Drive shaft

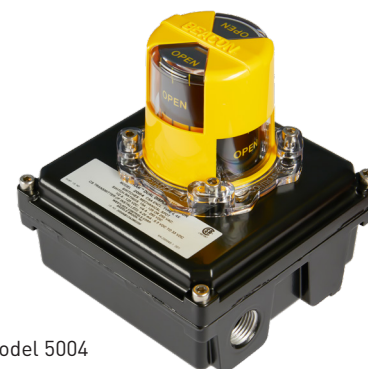
Westlock standard	Double-D with ¼" A/F
NAMUR standard	NAMUR standard VDI/VDE 3845

Available switches

	Pepperl + Fuchs model NJ2-V3-N
	V3 mechanical switches, SPDT with gold-plated contacts
	Magnum, SPDT hermetically sealed switches with rhodium contacts

Options

Model 5044	Stainless steel enclosure
------------	---------------------------



Model 5004



Model 5044

NOTES

1. See selection guide for standard conduit entries
2. See switches & sensors data sheet for further information
3. A specialist eliminator fitting is available for the mounting of an aftermarket solenoid valve
4. Please consult your sales office for any other requirements

ACCUTRAK™ INTRINSICALLY SAFE ROTARY POSITION MONITORS
 MODELS 5004 / 5044 SELECTION GUIDE

Base model						
5004	Aluminum enclosure					
5044	Engineered resin enclosure					
Shaft output						
S	Standard (Double-D with ¼" Flats)					
D	Direct mount to Keystone F89 actuators					
N	NAMUR					
Beacon						
BY	BM2-Y (Standard)					
RG	BM2-RG (Red Closed/Green Open)					
FE	BM2-Y-FE (French/English)					
B1	BM3-1 (3-way B1 Flowpath)					
B3	BM3-3 (3-way B3 Flowpath)					
B5	BM3-5 (3-way B5 Flowpath)					
B7	BM3-7 (3-way B7 Flowpath)					
B9	BM3-9 (3-way B9 Flowpath)					
LP	BM2-Y-LP (Low Profile Standard)					
FC	Flat Cover					
Conduit						
2A	Two ½" NPT (F)					
2B	Two ¾" NPT (F)					
Position switches						
2M08	Two P+F sensors model NJ2-V3-N - 8 pt. Terminal Strip					
2M09	Two SPDT Mechanical Switches with Gold Plated Contacts - 8 pt. Terminal Strip					
2M12	Two SPDT Magnum Switches with Rhodium Contacts - 8 pt. Terminal Strip					
2M16	IS MagPAC Module (Two SPST Bifurcated switches with LEDs) -- Std. with Clear Cover in 5044 Only)					
4M08	Four P&F Sensor model NJ2-V3-N - 16 pt. Terminal Strip					
4M09	Four SPDT Mechanical Switches with Gold Plated Contacts - 16pt. Terminal Strip					
4M12	Four SPDT Magnum Switches with Rhodium Contacts - 16 pt. Terminal Strip					
Position Transmitter						
00	None					
Unit Specialty Code						
00124	316 Stainless Steel Enclosure (for 5044 only)					
00710	12pt Terminal Strip					
5044	N	BY	2A	2M12	00	00124 = Model number 5044NBY2A2M120000124

NOTES

- Please contact your sales office for guidance on selecting the best possible combination for your control and monitoring requirements.
- See Hazardous area classification technical bulletin for further information on global standards.
- For stainless steel enclosure, please add 00124 to the end of your part number built with the selection guide above.

Translations

Where translated the copy is taken from the original English document TD10055-EN as checked by the relevant notified certification body and therefore the original English document will prevail. No rights or liability can be derived from any translation.

Crane Co., and its subsidiaries cannot accept responsibility for possible errors in catalogues, brochures, other printed materials, and website information. Crane Co. reserves the right to alter its products without notice, including products already on order provided that such alterations can be made without changes being necessary in specifications already agreed. All trademarks in this material are the property of Crane Co. or its subsidiaries. The Crane and Crane brands logotype (WESTLOCK CONTROLS®) are registered trademarks of Crane Co. All rights reserved.



WESTLOCK CONTROLS
 Head Office
 280 N. Midland Avenue, Ste. 258
 Saddle Brook, NJ 07663
 United States

USA
 +1 201 794 7650

EUROPE
 +44 (0)1892 516277

ASIA
 +65 6266 4535