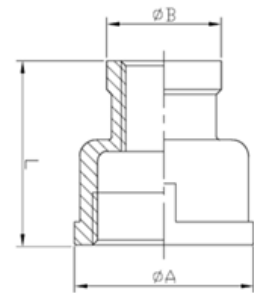


# DIMENSIONAL SPECIFICATIONS

STAINLESS STEEL ISO PATTERN FITTINGS 150 LB.

## REDUCING COUPLING (316)

Part #	Size (IN.)	Approx. Net WT. (LB.)	A	B	L
K612-0402	1/4 X 1/8	0.07	0.85	0.75	1.02
K612-0602	3/8 X 1/8	0.11	0.98	0.67	1.11
K612-0604	3/8 X 1/4	0.12	1.02	0.85	1.14
K612-0802	1/2 X 1/8	0.14	1.14	0.67	1.34
K612-0804	1/2 X 1/4	0.17	1.14	0.83	1.34
K612-0806	1/2 X 3/8	0.15	1.14	0.88	1.34
K612-1202	3/4 X 1/8	0.21	1.38	0.67	1.50
K612-1204	3/4 X 1/4	0.22	1.38	0.83	1.50
K612-1206	3/4 X 3/8	0.23	1.38	0.98	1.50
K612-1208	3/4 X 1/2	0.26	1.46	1.11	1.46
K612-1602	1 X 1/8	0.30	1.69	0.68	1.65
K612-1604	1 X 1/4	0.33	1.69	0.83	1.65
K612-1606	1 X 3/8	0.33	1.69	1.00	1.65
K612-1608	1 X 1/2	0.34	1.69	1.16	1.65
K612-1612	1 X 3/4	0.33	1.69	1.26	1.65
K612-2006	1-1/4 X 3/8	0.51	2.05	1.00	1.89
K612-2008	1-1/4 X 1/2	0.51	2.05	1.14	1.89
K612-2012	1-1/4 X 3/4	0.52	2.05	1.38	1.89
K612-2016	1-1/4 X 1	0.51	2.07	1.54	2.05
K612-2406	1-1/2 X 3/8	0.58	2.32	0.92	1.89
K612-2408	1-1/2 X 1/2	0.63	2.28	1.14	2.05



**MERIT  
BRASS**

DIRECTING THE FLOW OF *Quality*