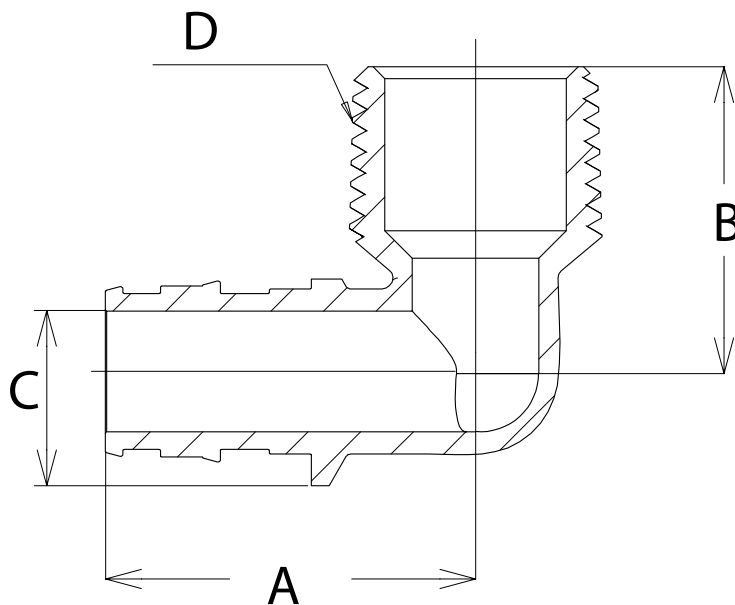


PART NO. F76831B

1/2" F1960 X MIP BRASS PEX 90° ELBOW



- Simple and dependable plumbing connection
- Easy installation
- Leak-proof connections
- Lead-free DZR brass
- Can be used with F1960 PEX rings
- Tested and certified to ASTM F1960
- Certified to NSF/ ANSI/ CAN 61- 2019, NSF/ ANSI 372-2016, and NSF/ ANSI 14-2015
- Certified to CSA B137.5-2020
- cUPC listed



Part No.	A - in(mm)	B - in (mm)	C - in (mm)	D - in (mm)	Weight-lbs (grams)
F76831B	1.24(31.60)	1.02 (26.00)	0.77 (19.50)	1/2"-14 NPT (1/2"-14 NPT)	0.10 (44.45)

F1960 Specified Dimensions	ID - in (mm)	OD - in (mm)
1/2" End Connection	.41 (10.33)	.61 (15.59)
5/8" End Connection	.53 (13.40)	.74 (18.90)
3/4" End Connection	.62 (15.80)	.87 (22.10)
1" End Connection	.83 (21.00)	1.11 (28.10)