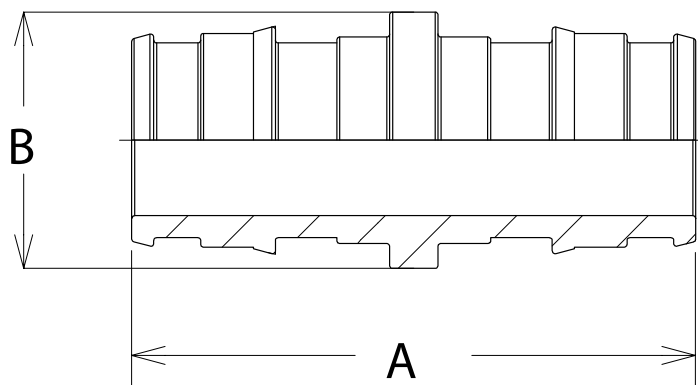




F1960 BRASS PEX COUPLING

- Simple and dependable plumbing connection
- Easy installation
- Leak-proof connections
- Lead-free DZR brass
- Can be used with F1960 PEX rings
- Tested and certified to ASTM F1960
- Certified to NSF/ ANSI/ CAN 61- 2019, NSF/ ANSI 372-2016, and NSF/ ANSI 14-2015
- Certified to CSA B137.5-2020
- cUPC listed



Part No.	Description	A - in (mm)	B - in (mm)	Weight-lbs (grams)
F76856B	3/4" x 1" F1960	2.22 (56.50)	1.18 (30.00)	0.16 (72.57)
F76857B	3/4" F1960	1.99 (50.50)	0.94 (24.00)	0.10 (45.36)
F76855B	1/2" x 3/4" F1960	1.75 (44.50)	0.94 (24.00)	0.09 (40.82)
F76854B	1/2" F1960	1.52 (38.50)	0.69 (17.50)	0.06 (27.22)
F76853B	1" F1960	2.46 (62.50)	1.18 (30.00)	0.20 (90.72)

F1960 Specified Dimensions	ID - in (mm)	OD - in (mm)
1/2" End Connection	.41 (10.33)	.61 (15.59)
5/8" End Connection	.53 (13.40)	.74 (18.90)
3/4" End Connection	.62 (15.80)	.87 (22.10)
1" End Connection	.83 (21.00)	1.11 (28.10)