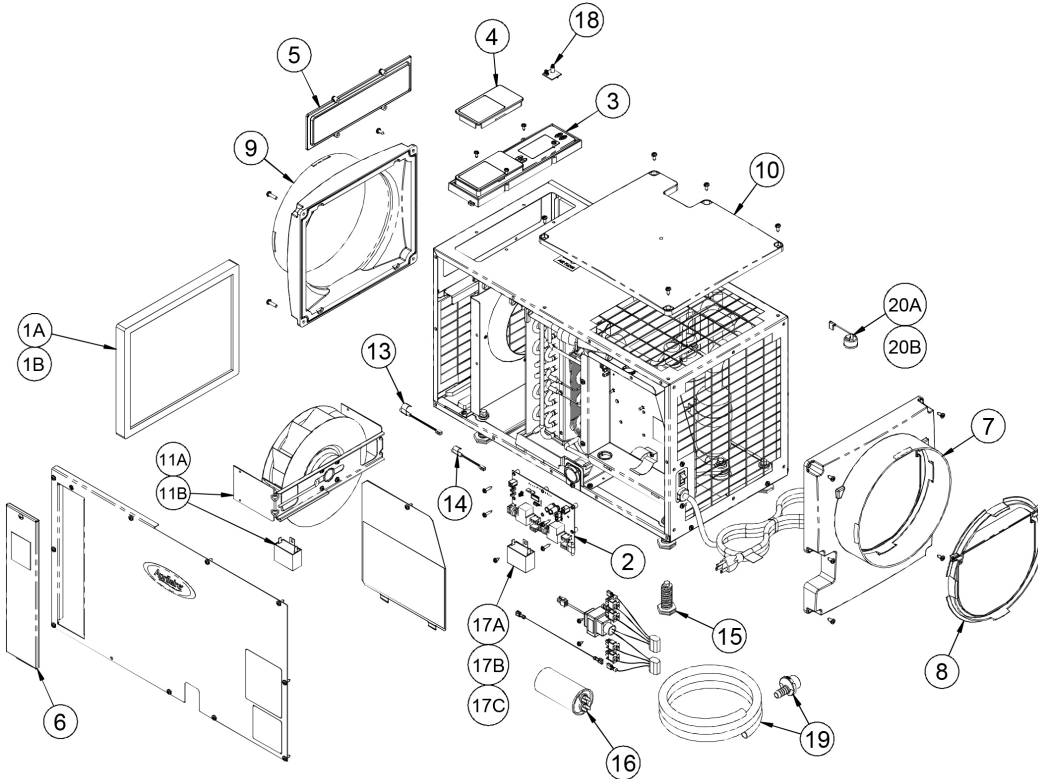


# Aprilaire®

Effective Date: January 1, 2019

## Dehumidifiers Dealer Parts List

### Model 1830/1850/1850F/1852/1850W Dehumidifiers

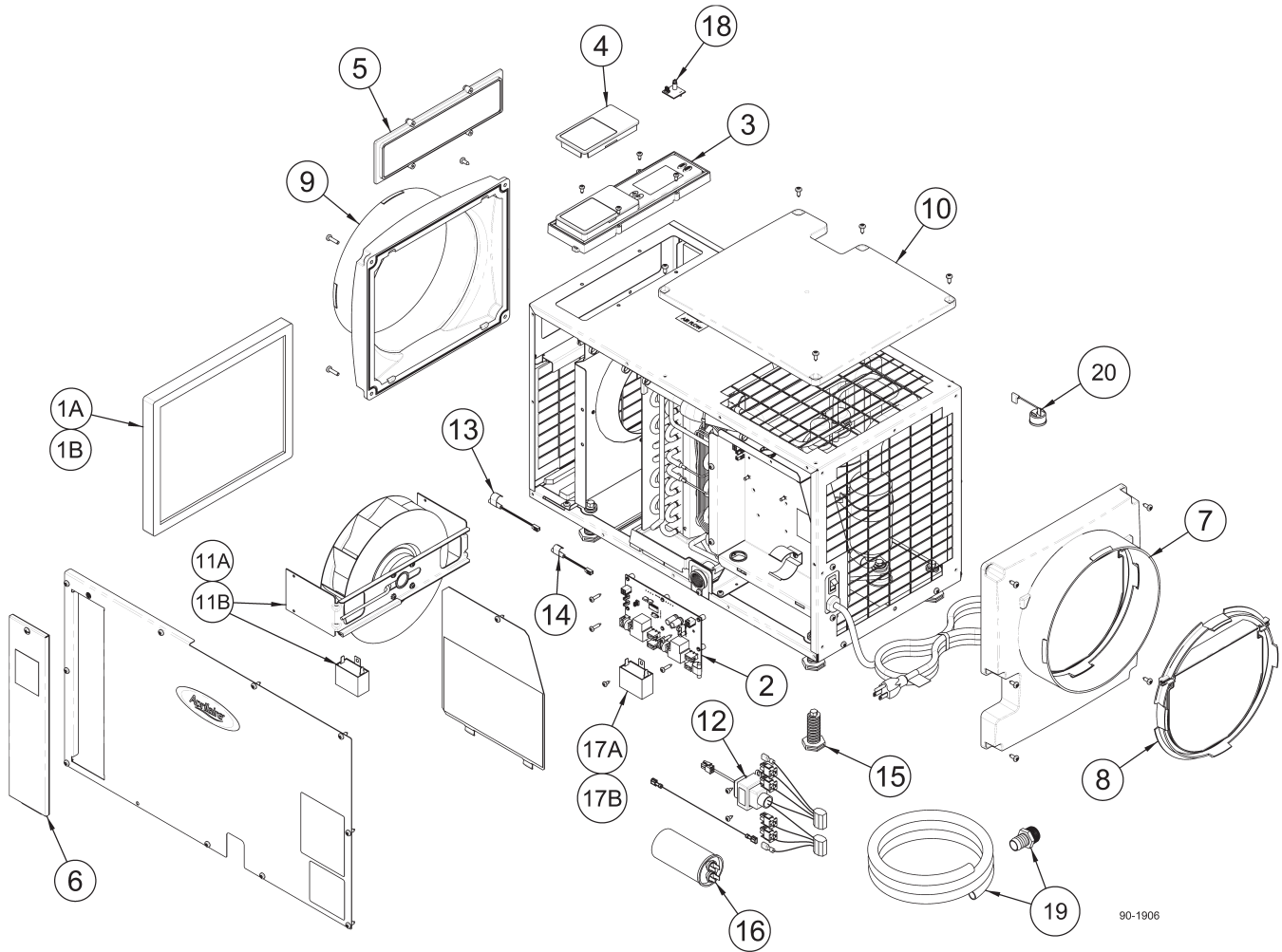


| NO.                            | PART DESCRIPTION   | QTY/CTN | PART NO.               |
|--------------------------------|--|---------|------------------------|
| 1A                             | Filter, 10" x 12" x 1" EZK (1830 & 1850)*  | 1       | 5443                   |
| 1B                             | Filter, 12" x 12" x 1" EZK (1850F/1852 Only)   | 1       | 5499                   |
| 2                              | Internal Control Board   | 1       | 5444                   |
| 3                              | User Interface Assembly  | 1       | 5445                   |
| 4                              | Wiring Access Door   | 1       | 5446                   |
| 5                              | UI Control Hole Cover  | 1       | 5447                   |
| 6                              | Filter Access Door (1830 & 1850)   | 1       | 5448                   |
| 7                              | Outlet Duct Panel  | 1       | 5449                   |
| 8                              | 10" Backflow Damper  | 1       | 5450                   |
| 9                              | Inlet Duct Panel   | 1       | 5451                   |
| 10                             | Outlet Cover   | 1       | 5452                   |
| 11A                            | 70 Pint Dehumidifier Fan   | 1       | 5453                   |
| 11B                            | 95 Pint Dehumidifier Fan   | 1       | 5467                   |
| 12                             | Transformer and Wire Harness   | 1       | 5454                   |
| 13                             | Low Temperature Sensor   | 1       | 5455                   |
| 14                             | High Temperature Sensor  | 1       | 5456                   |
| 15                             | Leveling Foot*   | 1       | 5457                   |
| 16                             | Compressor Run Capacitor, 70pt/95pt, 45MFD, 370VAC   | 1       | 5458                   |
| 17A                            | Fan Run Capacitor, 8MFD, 450VAC, Used on Models 1830 and 8191 with Serial Number Before 112015A09596   | 1       | 5459                   |
| 17B                            | Fan Run Capacitor, 6MFD, 450VAC, Used on Models 1830 and 8191 with Serial Number 112015A09596 or Later | 1       | 5582                   |
| 17C                            | Fan Run Capacitor, 12MFD, 450VAC, Used on Models 1850(F)(W), 1852 and 8192                             | 1       | 5468                   |
| 18                             | RH & Temp Sensor   | 1       | 5460                   |
| 19                             | Drain Tube + Fittings**  | 1       | See Page 3 for Details |
| 20A                            | Compressor Overload Switch, 70pt   | 1       | 5547                   |
| 20B                            | Compressor Overload Switch, 95pt   | 1       | 5548                   |
| <b>OTHER PARTS (NOT SHOWN)</b> |  |         |                        |
|                                | Low Profile Condensate Pump  | 1       | 4856                   |
|                                | Basement Kit (2-10" N/O Dampers, 2-10" N/C Dampers & 1 Transformer)                                    | 1       | 5442                   |
|                                | Digital Dehumidifier Control (for All Current Dehumidifiers)   | 1       | 76                     |
|                                | Living Space Duct Kit (25' of Insulated Flex Duct with 2 Quick Install Grilles and 2 Reducers)         | 1       | 5546                   |
|                                | Dehumidifier Hanging Kit   | 1       | 5660                   |
|                                | Hanging Kit for 1800 Series Dehumidifiers  | 1       | 5822                   |

\* Not Compatible with 1850F/1852

\*\*Drain Tube Only Included with 1850F/1852

## Model 1870/1870F/1870W Dehumidifiers



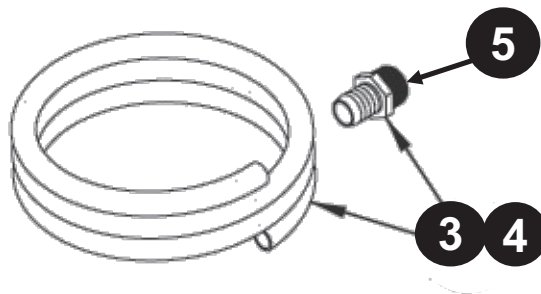
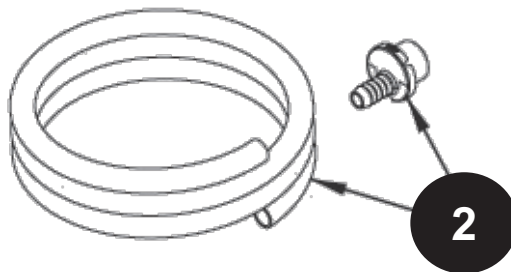
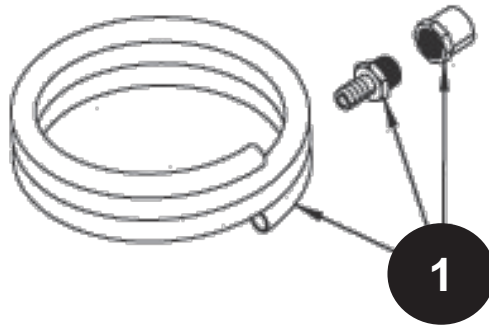
90-1906

| NO.                            | PART DESCRIPTION                          | QTY/CTN | PART NO.               |
|--------------------------------|---|---------|------------------------|
| 1A                             | Filter, 14" x 19" x 1" EZK (1870)         | 1       | 5569                   |
| 1B                             | Filter, 16" x 19" x 1" EZK (1870F)        | 1       | 5570                   |
| 2                              | Internal Control Board                    | 1       | 5444                   |
| 3                              | User Interface Assembly                   | 1       | 5445                   |
| 4                              | Wiring Access Door                        | 1       | 5446                   |
| 5                              | Hole Cover, UI Ctrl                       | 1       | 5447                   |
| 6                              | Door, Filter Access                       | 1       | 5571                   |
| 7                              | Outlet Duct Panel                         | 1       | 5449                   |
| 8                              | Backflow Damper, 10"                      | 1       | 5450                   |
| 9                              | Inlet Duct Panel                          | 1       | 5451                   |
| 10                             | Cover, Outlet                             | 1       | 5452                   |
| 11A                            | Fan, 130pt, with 10MFD Capacitor (1870)   | 1       | 5572                   |
| 11B                            | Capacitor, 10MFD, 250V                    | 1       | 5573                   |
| 12                             | Wire Harness, Power                       | 1       | 5454                   |
| 13                             | Sensor, Low Temperature                   | 1       | 5455                   |
| 14                             | Sensor, High Temperature                  | 1       | 5456                   |
| 15                             | Leveling Foot*                            | 1       | 5457                   |
| 16                             | Capacitor, 50MFD, 370VAC                  | 1       | 5594                   |
| 17A                            | Capacitor, 10MFD, 250VAC                  | 1       | 5573                   |
| 17B                            | Capacitor, 8MFD, 450VAC                   | 1       | 5459                   |
| 18                             | RH Sensor                                 | 1       | 5460                   |
| 19                             | Drain Tube + Fitting**                    | 1       | See Page 3 for Details |
| 20                             | Compressor Overload Switch                | 1       | 5574                   |
| <b>OTHER PARTS (NOT SHOWN)</b> |   |         |                        |
|                                | Hanging Kit for 1870 Series Dehumidifiers | 1       | 5691                   |
|                                | Hanging Kit for 1800 Series Dehumidifiers | 1       | 5822                   |

\* Not Compatible with 1870F

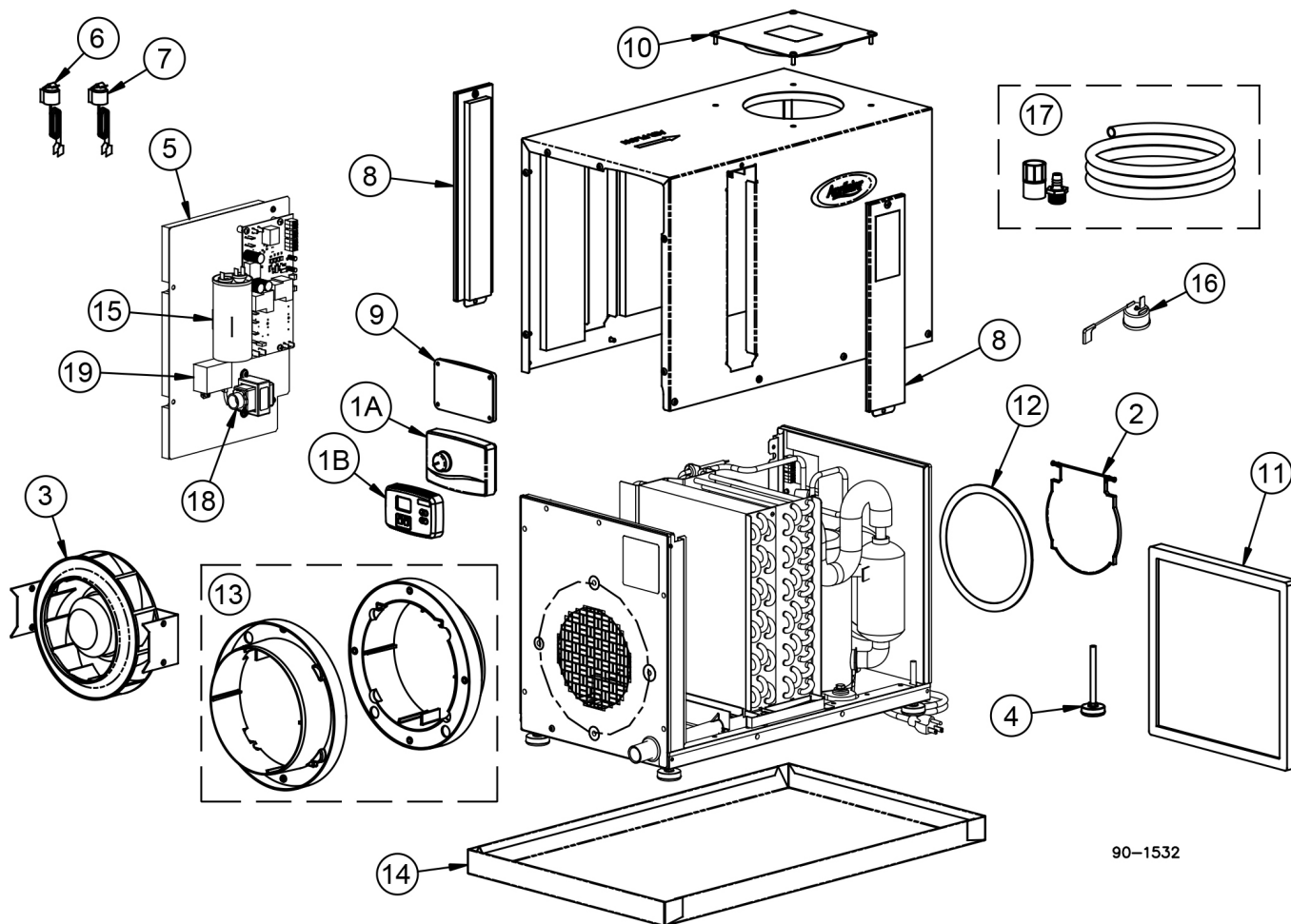
\*\*Drain tube only included with 1870F

## Drain Fittings for Model 1820/1830/1850/1870 Series Dehumidifiers



| NO. | PART DESCRIPTION  | QTY/CTN | PART NO. |
|-----|---|---------|----------|
| 1   | Original Drain Fittings, 1/2 MNPT x 1/2 Barb & 3/4 M Slip x 1/2 FNPT Reducer, with 5ft of 1/2" Drain Tube | 1       | 5461     |
| 2   | 2nd Generation Drain Fitting, Custom Outlet Barb 3/4 M Slip x 1/2 Barb with 5ft of 1/2" Drain Tube        | 1       | 5585     |
| 3   | New Threaded Fitting, 3/4" MNPT x 3/4" Barb, with 5ft of 3/4" Drain Tube                                  | 1       | 5665     |
| 4   | New Threaded Fitting, 3/4" MNPT x 3/4" Barb, with 10ft of 3/4" Drain Tube                                 | 1       | 5692     |
| 5   | New Threaded Fitting, 3/4" MNPT x 3/4" Barb (Fitting Only)  | 1       | 5693     |

## Model 1730A with R410A Dehumidifier



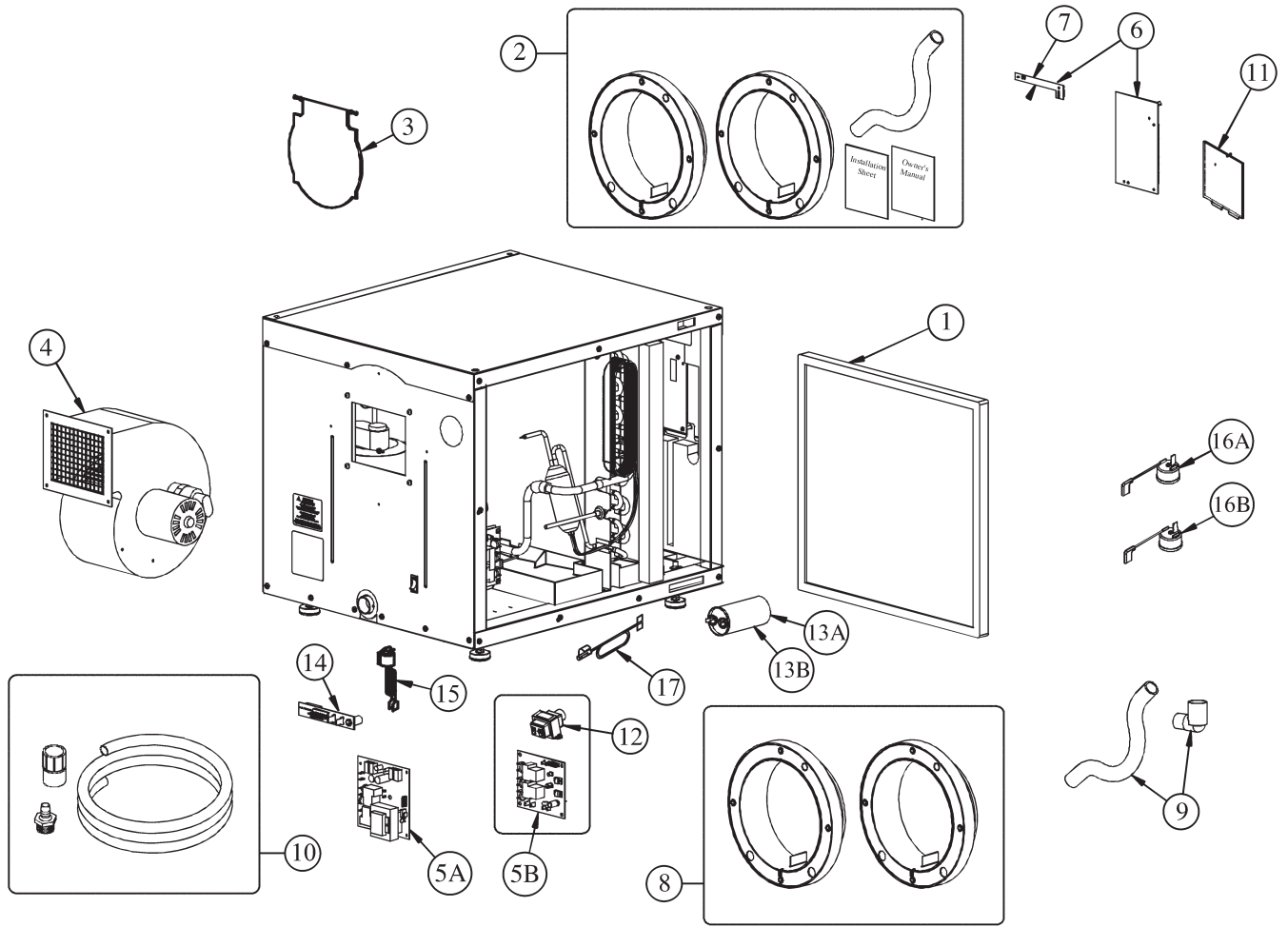
90-1532

| NO.                            | PART DESCRIPTION   | QTY/CTN | PART NO. |
|--------------------------------|--|---------|----------|
| 1A                             | Dehumidistat Control Assembly (Obsolete)   | 1       | 4917     |
| 1B                             | Digital Dehumidifier Control   | 1       | 76       |
| 2                              | Backflow Damper  | 1       | 4918     |
| 3                              | Impeller with Bracket (Blower Assembly) <sup>2</sup>   | 1       | 5332     |
| 4                              | Leveling Foot  | 1       | 4920     |
| 5                              | Control PCB Assembly <sup>3</sup>  | 1       | 5329     |
| 6                              | High Temperature Cutout Switch   | 1       | 4924     |
| 7                              | Low Temperature Cutout Switch  | 1       | 4925     |
| 8                              | Filter Access Door Assembly (Obsolete)   | 1       | 4926     |
| 9                              | Dehumidistat Hole Cover (Obsolete)   | 1       | 4927     |
| 10                             | Outlet Cover Plate (Obsolete)  | 1       | 4928     |
| 11                             | Air Filter   | 1       | 4904     |
| 12                             | Inlet/Outlet Screen (Obsolete)   | 1       | 4930     |
| 13                             | Duct Collars   | 2       | 4751     |
| 14                             | Auxiliary drain pan (Obsolete)   | 1       | 4911     |
| 15                             | Capacitor, 55MFD   | 1       | 4922     |
| 16                             | Compressor Overload Switch   | 1       | 5324     |
| 17                             | Condensate Drain Hose Assembly   | 1       | 4863     |
| 18                             | 10VA Transformer with Wire Harness   | 1       | 5398     |
| 19                             | Capacitor, 10MFD for Impeller  | 1       | 5399     |
| <b>OTHER PARTS (NOT SHOWN)</b> |  |         |          |
|                                | Low Profile Condensate Pump (Condensate Pump with 20' Condensate Hose)                         | 1       | 4856     |
|                                | Living Space Duct Kit (25' of 8" Insulated Flex Duct with 2 Quick Install Grilles)             | 1       | 4857     |
|                                | Living Space Duct Kit (25' of Insulated Flex Duct with 2 Quick Install Grilles and 2 Reducers) | 1       | 5546     |

<sup>2</sup>Part No. 4919 replaced by 5332

<sup>3</sup>Part No. 4923 replaced by 5329

Model 1710A/1750A/1770A Dehumidifiers



**Model 1710A/1750A/1770A Dehumidifiers**

| NO.                            | PART DESCRIPTION   | QTY/CTN           | MODEL 1710A/1750A/1770A | MODEL 1700/1710/1720/1750/1770 |
|--------------------------------|--|-------------------|-------------------------|--------------------------------|
|                                |  |                   | PART NO.                | PART NO.                       |
| 1                              | Filter   | 1                 | 4510                    | 4510                           |
| 2                              | Drain Trap/Collars/Manual  | 1                 | 4843                    | 4843                           |
| 3                              | Backflow Damper *  | 1                 | 4918                    | 4918                           |
| 4                              | Blower/Motor Assembly, 1710A/1750A and 1700/1710/1750  | 1                 | 4515                    | 4515                           |
|                                | Blower/Motor Assembly, 1770A and 1720/1770   | 1                 | 4646                    | 4646                           |
| 5A                             | Power Supply Board   | See Table 1 Below |                         |                                |
| 5B                             | Power Supply Board (New Style Without Integrated Transformer)                                  |                   |                         | N/A                            |
| 6                              | Control Board Kit **   | 1                 | 5353                    | 5353                           |
| 7                              | Sensor Board   | 1                 | 4752                    | 4752                           |
| 8                              | Duct Collars   | 2                 | 4751                    | 4751                           |
| 9                              | Drain Trap and PVC Elbow   | 1                 | 4842                    | 4842                           |
| 10                             | Condensate Drain Hose Assembly (Included with Model 1710A Only)                                | 1                 | 4863                    | N/A                            |
| 11                             | LED Control Door   | 1                 | 4864                    | 4864                           |
| 12                             | 10 VA Transformer  | 1                 | 5262                    | 5262                           |
| 13A                            | Capacitor, 60MFD (Model 1770A Only)  | 1                 | 5255                    | N/A                            |
| 13B                            | Capacitor, 55MFD   | 1                 | 4922                    | N/A                            |
| 14                             | Daughter Board   | 1                 | 5264                    | N/A                            |
| 15                             | High Temperature Cutout Switch   | 1                 | 4924                    | N/A                            |
| 16A                            | Compressor Overload Switch, 1710A/1750A  | 1                 | 5324                    | N/A                            |
| 16B                            | Compressor Overload Switch, 1770A  | 1                 | 5325                    | N/A                            |
| 17                             | Frost Sensor   | 1                 | 5422                    | N/A                            |
| <b>OTHER PARTS (NOT SHOWN)</b> |  |                   |                         |                                |
|                                | External Control ***   | 1                 | 76                      | 70                             |
|                                | Convertible Installation Kit (2-N/O 8" Damper, 2-N/C 8" Damper and Transformer)                | 1                 | 4522                    | 4522                           |
|                                | Distributor and Nozzle, 1710A/1750A (Obsolete)   | 1                 | 4903                    | N/A                            |
|                                | Low Profile Condensate Pump (Condensate Pump with 20' Condensate Hose)                         | 1                 | 4856                    | 4856                           |
|                                | Living Space Duct Kit (25' Of 8" Insulated Flex Duct With 2 Quick Install Grilles)             | 1                 | 4857                    | 4857                           |
|                                | Living Space Duct Kit (25' of Insulated Flex Duct With 2 Quick Install Grilles and 2 Reducers) | 1                 | 5546                    | 5546                           |

\* The Backflow Damper (Part No. 4918) is Compatible with All Models 1730A, 1770A, but Only with Model 1750A with Serial Numbers Greater than 2610AA147015.

\*\* If Control Board being Replaced is Currently Used with a Model 70 Control, the Control Must be Replaced with a Model 76 Control.

\*\*\* Only use a Model 70 Control to Replace an Existing Model 70 Control with Units Produced Before Serial Number 4610AAXXXXXX.

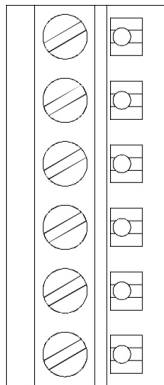
**Table 1: Power Supply Board Part Number**

| NO. | PART DESCRIPTION  | COMPATIBLE WITH                             | QTY/CTN | PART NO. |
|-----|---|---|---------|----------|
| 5A  | Power Supply Board  | Control Board without DH Terminal           | 1       | 4517     |
| 5B  | Power Supply Board (New Style without Integrated Transformer) | Control Board with DH Terminal <sup>1</sup> | 1       | 5260     |

<sup>1</sup> DH Terminal Implemented on All Units with Serial Number 4610AAXXXXXX or Later.

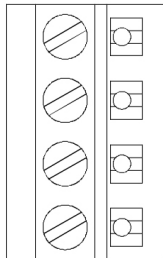
**Identifying Type of Control by Terminal Block**

**MODEL 70**



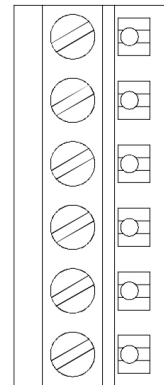
-  
+  
B  
A

**MODEL 75**



C  
R  
DH  
DH

**MODEL 76**



A  
B  
C/-  
R/+  
DH  
DH

90-1926



PO Box 1467 • Madison, WI 53701-1467 • Phone: 800.334.6011 • Fax: 608.257.4357 • www.AprilairePartners.com

Printed in the USA