

TWO-PIECE CUP AND SKIRT ESCUTCHEON

Figure 1010, 1011, 1012, 1013 and 1014



NFP1010CP

FEATURES & BENEFITS

- For use with pendent and horizontal sidewall sprinkler heads
- Skirts available in standard, semi-flush and flush
- Cups available in standard one-piece and two-piece split design
- Material: Steel

SKIRTS

PART NUMBER	DESCRIPTION	INNER DIAMETER	OUTER DIAMETER	FINISH
NFP1010CP	Standard Skirt	2-3/16"	3-1/2"	Chrome
NFP1010OW	Standard Skirt	2-3/16"	3-1/2"	Off-white
NFP1010WH	Standard Skirt	2-3/16"	3-1/2"	White
NFP1011CP	Flush Skirt	2-3/16"	3-7/8"	Chrome
NFP1011WH	Flush Skirt	2-3/16"	3-7/8"	White
NFP1012CP	Semi-Flush Skirt	2-3/16"	3-7/8"	Chrome
NFP1012WH	Semi-Flush Skirt	2-3/16"	3-7/8"	White

CUPS

PART NUMBER	DESCRIPTION	INNER DIAMETER	OUTER DIAMETER	FINISH
NFP1013CPD	1/2" Cup	1/2"	2-3/16"	Chrome
NFP1013CPF	3/4" Cup	3/4"	2-3/16"	Chrome
NFP1013OWD	1/2" Cup	1/2"	2-3/16"	Off-white
NFP1013WHD	1/2" Cup	1/2"	2-3/16"	White
NFP1013WHF	3/4" Cup	3/4"	2-3/16"	White
NFP1014CP	1/2" Two-piece Cup	1/2"	2-3/16"	Chrome

RECESSED ESCUTCHEON COVERAGE PLATE

Figure 1006



NFP1006CP

FEATURES & BENEFITS

- Fits most existing recessed sprinkler escutcheons
- Coverage Area: 5"

PART NUMBER	INNER DIAMETER	OUTER DIAMETER	FINISH	MATERIAL
NFP1006CP	2-7/8"	5"	Chrome	.020" Cold Rolled Steel
NFP1006WH	2-7/8"	5"	White	.020" Cold Rolled Steel

ONE-PIECE LIGHT CHROME ESCUTCHEON

Figure 1005



NFP1005CPD

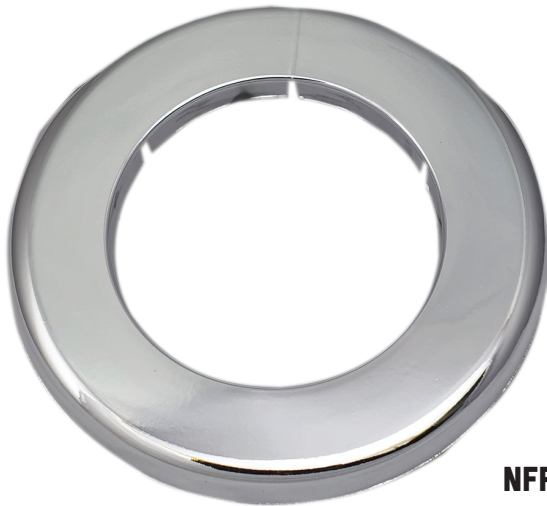
FEATURES & BENEFITS

- Available Sizes: 1/2" and 3/4"
- Coverage Area: 2-7/8"
- Available Finish: Chrome plated

PART NUMBER	SIZE	DEPTH	MATERIAL
NFP1005CPD	1/2"	5/8"	Steel
NFP1005CPF	3/4"	5/8"	Steel

PLASTIC WALL PLATE

Figure 1004



NFP1004CPD

FEATURES & BENEFITS

- Available Sizes: 1/2"–8"
- Break lines for easy splitting
- Suitable for indoor and outdoor use
- Material: Injection molded plastic
- Depth: 3/16"

PART NUMBER	INNER DIAMETER	OUTER DIAMETER	SIZE	FINISH
NFP1004CPD	13/16"	1-13/16"	1/2"	Chrome
NFP1004CPF	1-13/16"	3"	3/4"	Chrome
NFP1004CPG	1-5/16"	3-3/16"	1"	Chrome
NFP1004CPH	1-5/8"	3-9/16"	1-1/4"	Chrome
NFP1004CPJ	1-7/8"	3-7/8"	1-1/2"	Chrome
NFP1004CPK	2-3/8"	4-7/16"	2"	Chrome
NFP1004CPL	2-7/8"	5-1/4"	2-1/2"	Chrome
NFP1004CPM	3-9/16"	5-15/16"	3"	Chrome
NFP1004CPP	5-9/16"	6-15/16"	4"	Chrome
NFP1004CPU	6-3/4"	9-13/16"	6"	Chrome
NFP1004CPX	8-13/16"	13-0"	8"	Chrome
NFP1004WHD	13/16"	1-13/16"	1/2"	White
NFP1004WHF	1-1/16"	3"	3/4"	White
NFP1004WHG	1-5/16"	3-3/16"	1"	White
NFP1004WHH	1-5/8"	3-9/16"	1-1/4"	White
NFP1004WHJ	1-7/8"	3-7/8"	1-1/2"	White
NFP1004WHK	2-3/8"	4-7/16"	2"	White
NFP1004WHL	2-7/8"	5-1/4"	2-1/2"	White
NFP1004WHM	3-9/16"	5-15/16"	3"	White
NFP1004WHP	5-9/16"	6-15/16"	4"	White

*Should not be painted. Paint may deteriorate the plastic.

TWO-HOOK SPRINKLER HEAD GUARD

Figure 1018



NFP1018CPDF

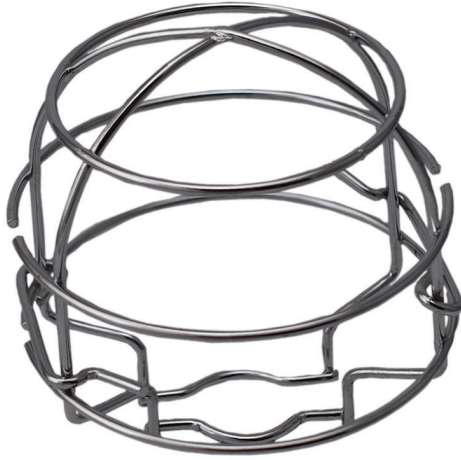
FEATURES & BENEFITS

- Protects against minor impacts to recessed sprinkler heads
- Two-hook design allows for installation on most 1/2" and 3/4" heads

PART NUMBER	FINISH	MATERIAL
NFP1018CPDF	Chrome	0.12" Steel Wire
NFP1018RDF	Red	0.12" Steel Wire

TWO-PIECE RECESSED SPRINKLER HEAD GUARD

Figure 1018R



NFP1018RCPD

FEATURES & BENEFITS

- Protects against minor impacts to recessed sprinkler heads
- Two-hook design allows for installation on most 1/2" heads
- Available Finish: Chrome

PART NUMBER	INNER DIAMETER	SIZE	MATERIAL
NFP1018RCPD	2-3/4"	3" H x 2-15/16" W	.080" Steel Wire

TWO-PIECE SPRINKLER HEAD GUARD WITH ADJUSTABLE BASE

Figure 1018A



FEATURES & BENEFITS

- Protects against minor impacts to recessed sprinkler heads
- Available for 1/2" heads only
- Two-piece adjustable split base provides additional protection for high risk heads
- Available Finish: Red

PART NUMBER	MATERIAL
NFP1018ARD	0.12" Steel Wire

SPRINKLER HEAD GUARD WITH SHIELD

Figure 1018S



NFP1018SRDF

FEATURES & BENEFITS

- Protects against minor impacts to recessed sprinkler heads
- Two-hook design allows for installation on most 1/2" and 3/4" heads
- Water shield provides protection for in-rack sprinkler heads*
- Available Finish: Red

PART NUMBER	MATERIAL
NFP1018SRDF	0.12" Steel Wire

*Will not function properly in the pendent position.

FIRE DEPARTMENT CONNECTION SIGN

Figure 1016



NFP101601

FEATURES & BENEFITS

- Color: Red with raised white lettering
- Easily identifies Fire Department Connections

PART NUMBER	SIZE	MATERIAL	LETTERING
NFP101601	4"	Aluminum	AUTO SPRK FIRE DEPT. CONNECTION
NFP101602	4"	Metal	STANDPIPE. - AUTO SPRK FIRE DEPT. CONNECTION

BREAKABLE LOCK

Figure 1020



NFP1020

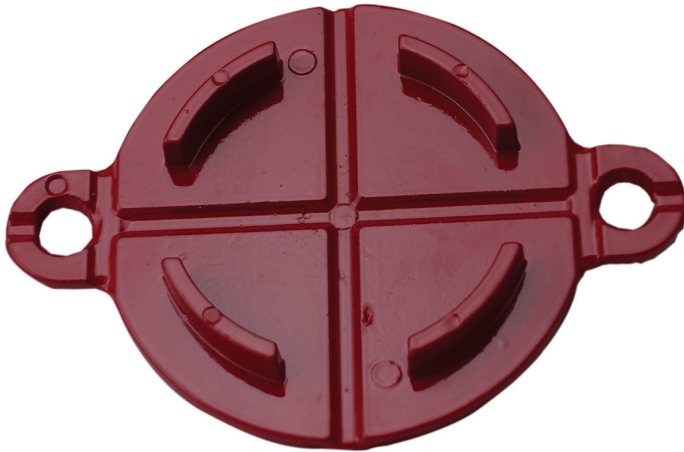
FEATURES & BENEFITS

- Prevents tampering of controlled valves
- Keyed alike for easy access by authorities

PART NUMBER	MATERIAL
NFP1020	Body: Brass Shackle and Keys: Steel
NFP1020BR	Body: Brass Shackle and Keys: Steel

FDC BREAKABLE CAP

Figure 1200



NFP120001

FEATURES & BENEFITS

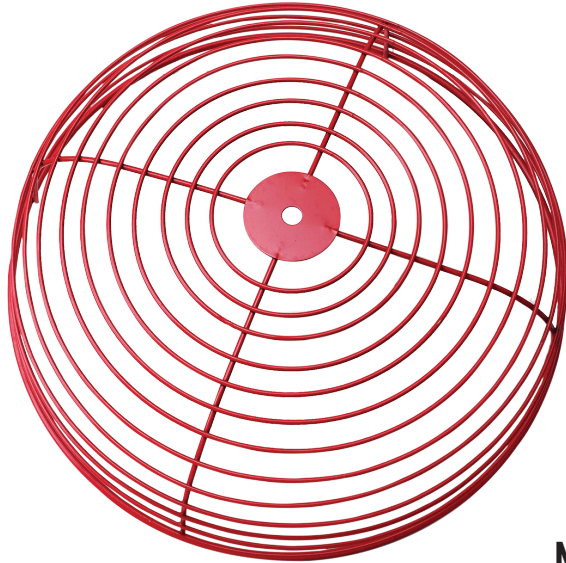
- Each set includes: 2 caps*, 4 eyelets and 4 hex nuts
- Style: Pin lug

PART NUMBER	SIZE	MATERIAL
NFP120001	2-1/2"	Cast Aluminum
NFP120002	2-1/2"	Plastic

*Tabs on caps are designed to easily break for quick access. Do not overtighten.

BELL GUARD CAGE

Figure 1017



NFP1017

FEATURES & BENEFITS

- Protects bells against minor impacts
- Can be used for indoors or outdoors
- Compatible with 6", 8" and 10" bells
- Available Finish: Red

PART NUMBER	MATERIAL
NFP1017	Powder Coated Steel