

LENTZ

PRESSURE BALANCE DUAL SHOWER HEAD SHOWER SYSTEM - LEVER HANDLE

SKU: 953087-L



CONTENTS

PRESSURE BALANCE VALVE TRIM	PAGE 2
PB ROUGH-IN VALVE	PAGE 3
DIVERTER VALVE TRIM	PAGE 4
DIVERTER ROUGH-IN VALVE	PAGE 5
SHOWER HEAD	PAGE 6
WALL SHOWER ARM	PAGE 7
CEILING SHOWER ARM	PAGE 8

FEATURES

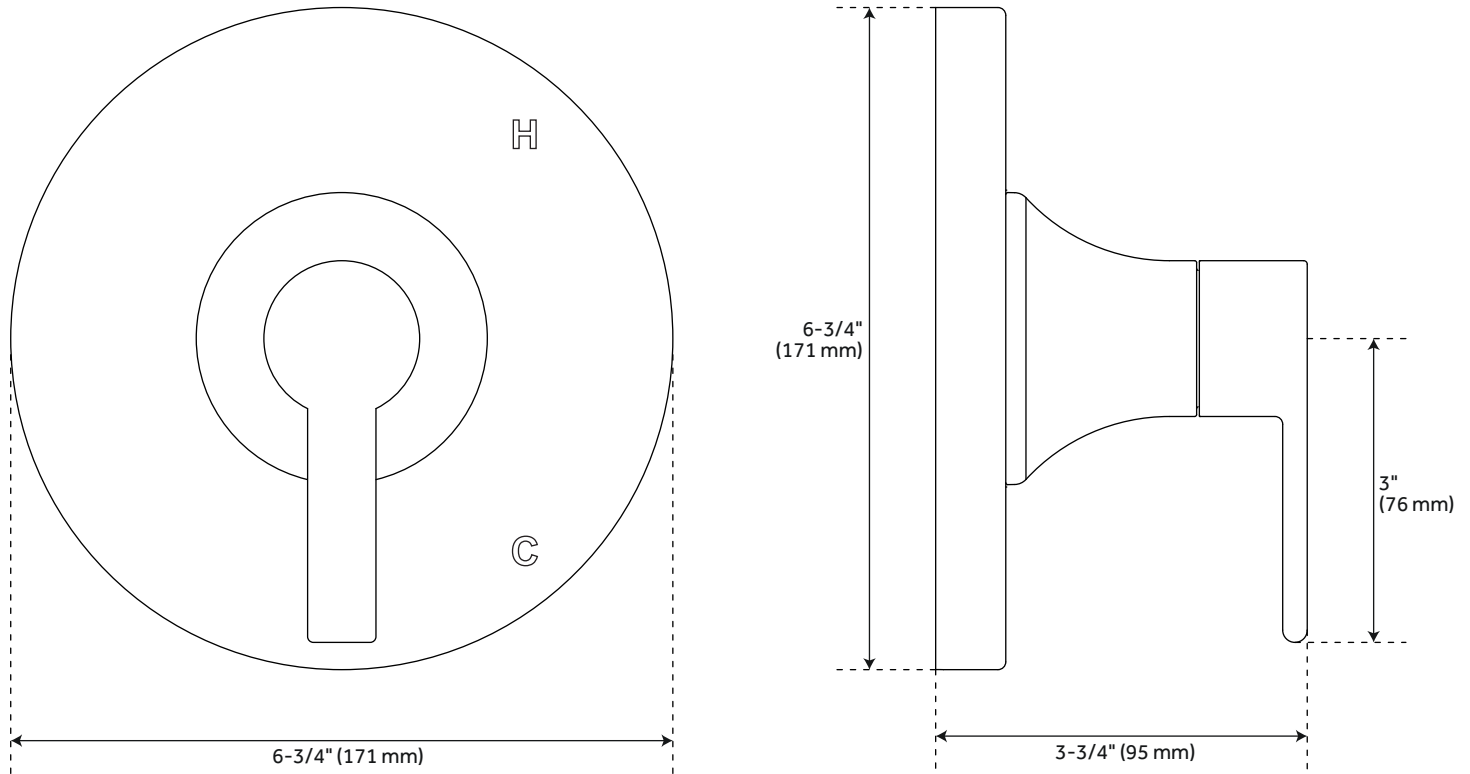
- Design: Modern
- Shape: Round
- Installation Type: Wall Mount
- Handle Type: Lever
- Assembly Required: No
- Metal Handles
- Single Function Shower Head (Full Spray)
- Easy Clean Rubber Nozzles
- Brass Ball-Joint
- Brass Constructed Shower Arm
- Water Supply Elbow:
 - 1/2" Female Wall Connection
 - 1/2" Male Hose Connection
- Optional Pressure Balance Rough-In Valve:
 - Pressure Balance Valve with Integral Stops
 - One-Piece Cartridge Design for Ease of Maintenance
 - Back-to-Back Capability
 - Ceramic Disc Valve Cartridge
 - Cast Bronze Valve Body
 - Adjustable Temperature Limit Stop
 - Quick Remove Plaster Guard
 - Easy Mounting Brackets
- Optional Diverter Rough-In Valve:
 - Six Total Settings Allow for Shared Water Flow Between Outlets, Giving You the Ability to Use Two Functions at Once
 - Ceramic Cartridge
 - Available Single-Function Diverter Valve
 - Cartridge Restricts Water Flow to One Outlet at a Time
 - For Installations Only Requiring 2 Outlets, the 3rd Outlet may be Looped into One of the Existing Pipes
 - Brass Valve Body

REVISED 05/24/2021

LENTZ

PRESSURE BALANCE VALVE TRIM

SKU: 953087-L



FEATURES

Material: Brass
Length: 6-3/4"
Height: 6-3/4"
Depth: 3-3/4"
Handle Length: 3"

CODES/STANDARDS

cUPC
ASME A112.18.1/CSA B125.1
Massachusetts Accepted

LISTED ID:

SHLZ8010LH, SHLZPBLEV

PRODUCT IMAGE

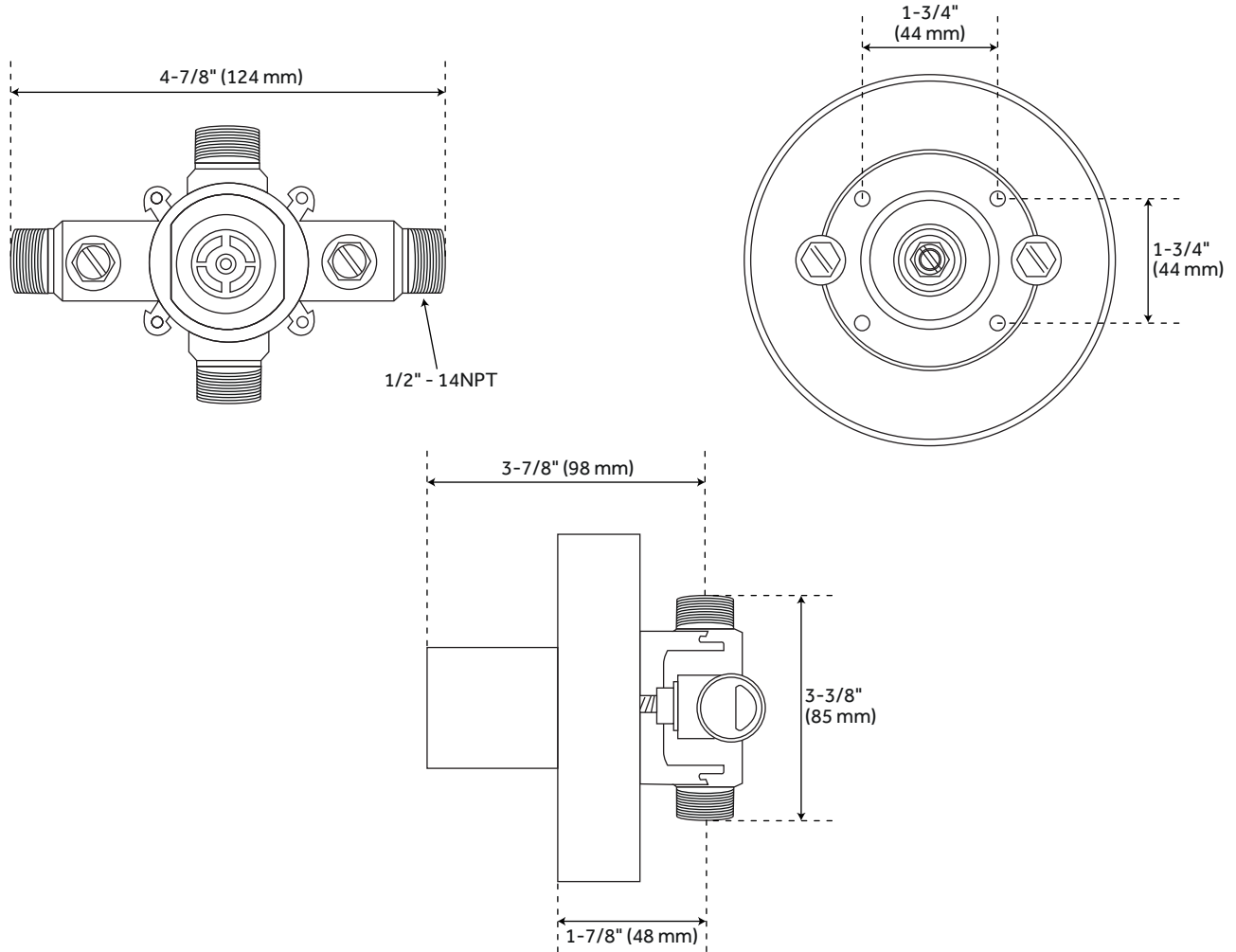


All dimensions and specifications are nominal and may vary. Use actual products for accuracy in critical situations.

PAGE 2
Code: SHLZ8010LH, SHLZPBLEV

OPTIONAL ROUGH-IN VALVE FOR PRESSURE BALANCE SHOWER VALVE TRIM

SKU: 953087-L



FEATURES

Material: Bronze
NPT Connection: 1/2"

CODES/STANDARDS

cUPC
ASME A112.18.1/CSA B125.1
ASSE 1016 Type P
Massachusetts Accepted

LISTED ID:

SH4001

PRODUCT IMAGE

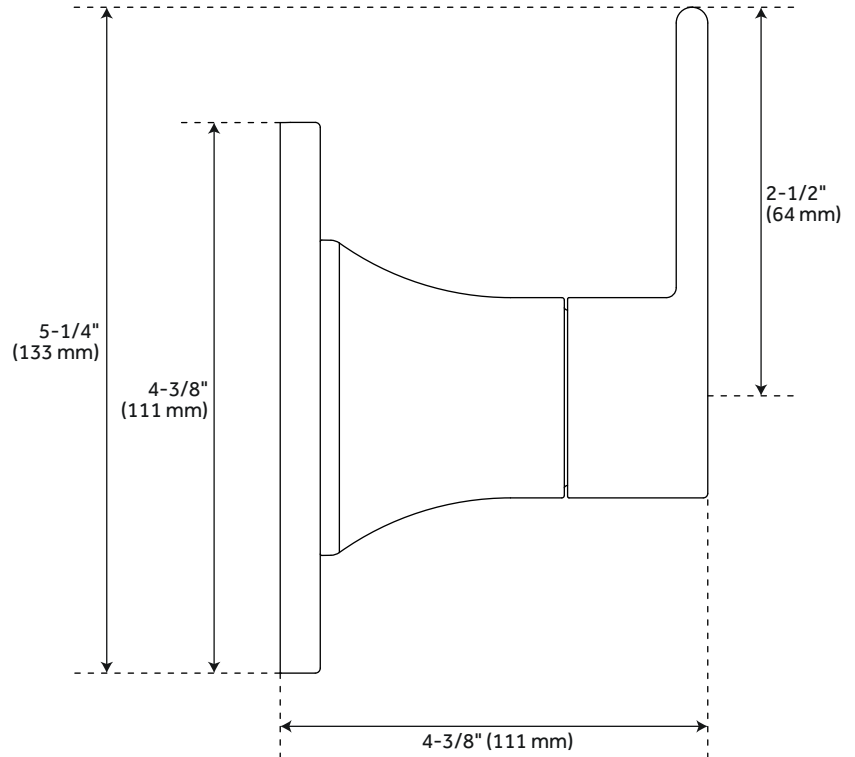
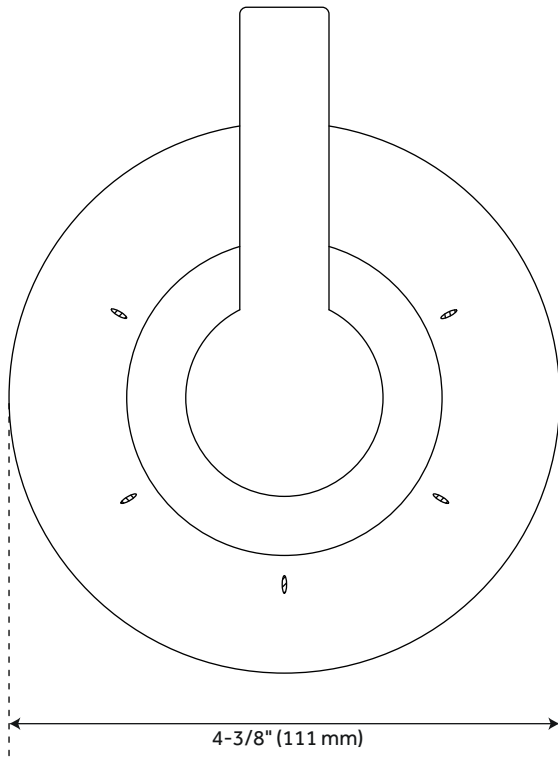


All dimensions and specifications are nominal and may vary. Use actual products for accuracy in critical situations.

PAGE 3
Code: SH4001

DIVERTER VALVE TRIM

SKU: 953087-L



FEATURES

Material: Brass
 Length: 4-3/8"
 Height: 5-1/4"
 Depth: 4-3/8"
 Handle Length: 2-1/2"
 Base Plate Diameter: 4-3/8"

CODES/STANDARDS

cUPC
 ASME A112.18.1/CSA B125.1
 Massachusetts Accepted

LISTED ID:

SHLZ9005LH, SHLZTVLEV

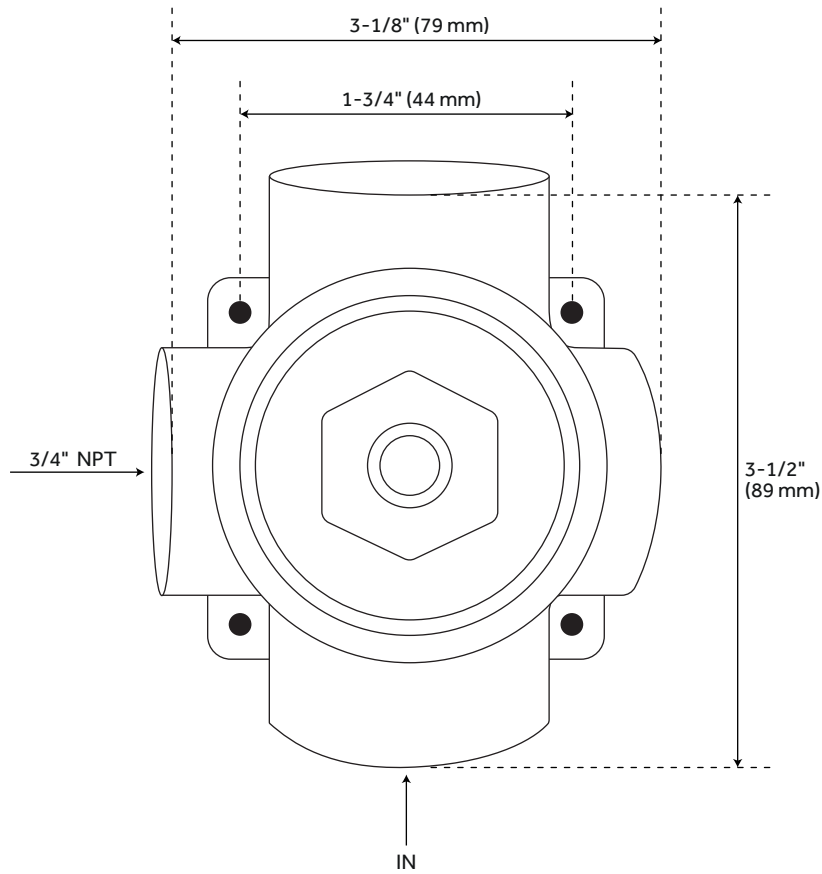


PRODUCT IMAGE



OPTIONAL ROUGH-IN VALVE FOR DIVERTER VALVE TRIM

SKU: 953087-L



FEATURES

Material: Brass
NPT Connection: 3/4"

CODES/STANDARDS

cUPC
ASME A112.18.1/CSA B125.1
Massachusetts Accepted

LISTED ID:

SH6103

PRODUCT IMAGE



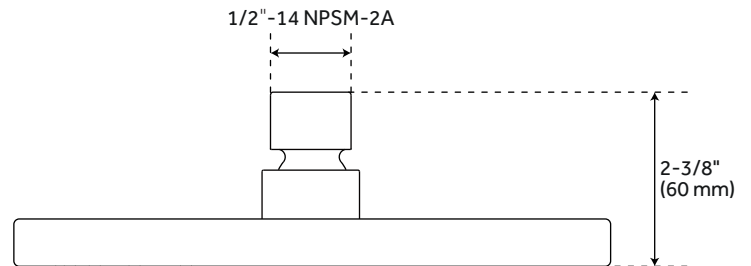
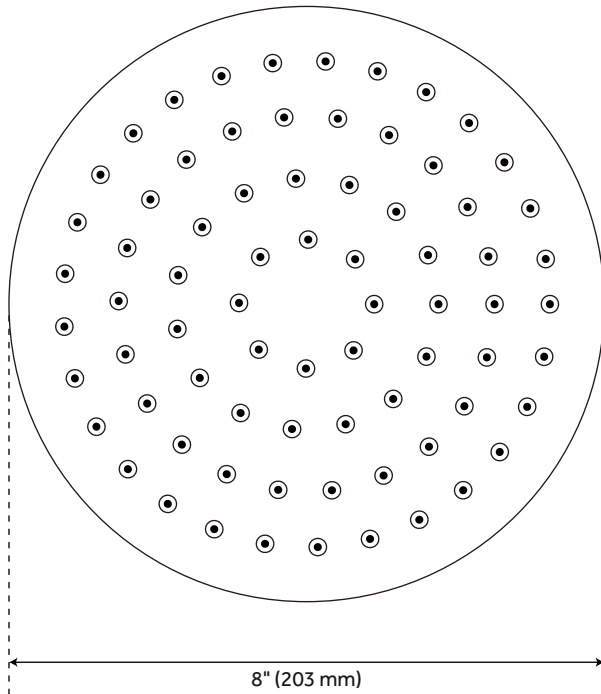
All dimensions and specifications are nominal and may vary. Use actual products for accuracy in critical situations.

PAGE 5
Code: SH6103

LENTZ

WALL-MOUNT RAINFALL SHOWER HEAD

SKU: 953087-L



FEATURES

Material: ABS
Diameter: 8"
Height: 2-3/8"
Connection Type: 1/2"-14 NPSM-2A
Rainfall Shower Head Flow Rate:
1.8 gpm (6.8L/min) Max @ 80 psi

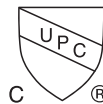
CODES/STANDARDS

cUPC
ASME A112.18.1/CSA 125.1
CEC Listed
WaterSense
Massachusetts Accepted

LISTED ID:

SHRSB820RG

PRODUCT IMAGE



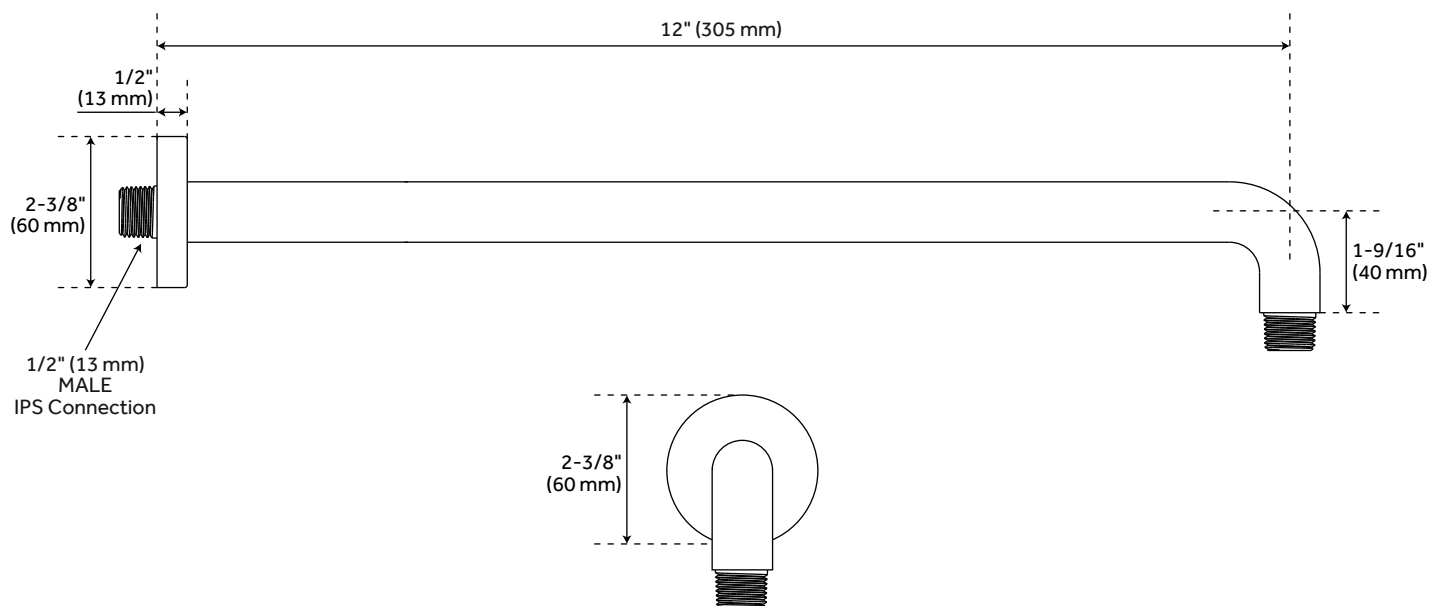
All dimensions and specifications are nominal and may vary. Use actual products for accuracy in critical situations.

PAGE 6
Code: SHRSB820RG

LENTZ

WALL-MOUNT SHOWER ARM

SKU: 953087-L



FEATURES

Material: Brass
Length: 12"
Height: 1-9/16"
Base Plate Diameter: 2-3/8"
Escutcheon Included
IPS: 1/2"

CODES/STANDARDS

cCSAus
ASME A112.18.1/CSA B125.1
Massachusetts Accepted

LISTED ID:

SHRSA120

PRODUCT IMAGE

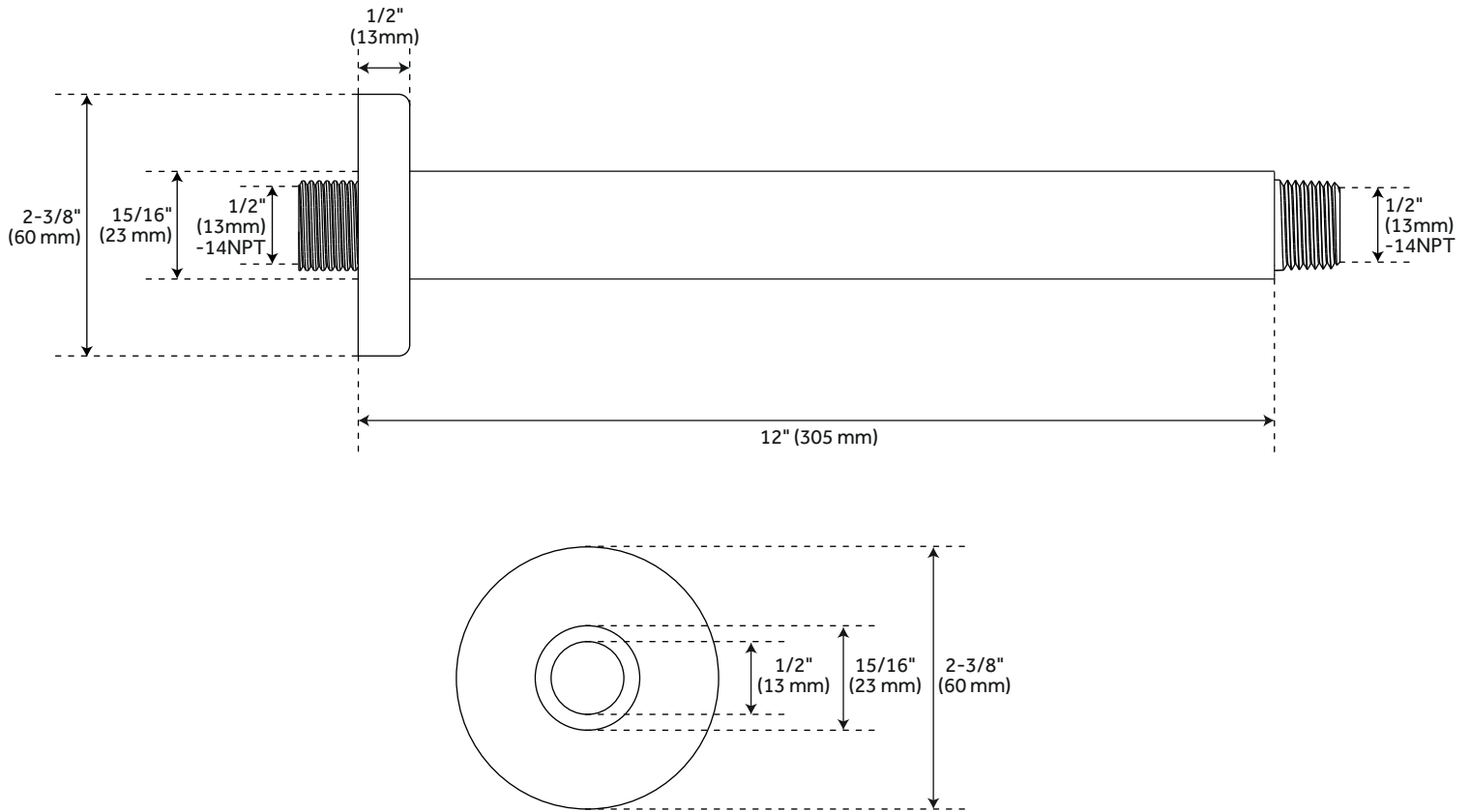


All dimensions and specifications are nominal and may vary. Use actual products for accuracy in critical situations.

PAGE 7
Code: SHRSA120

CEILING-MOUNT SHOWER ARM

SKU: 953087-L



FEATURES

Material: Brass
Height: 12"
Base Plate Diameter: 2-3/8"
Escutcheon Included
Connection Type: 1/2" NPT

CODES/STANDARDS

cCSAus
ASME A112.18.1/CSA B125.1
Massachusetts Accepted

LISTED ID:

SHRSC120

PRODUCT IMAGE

