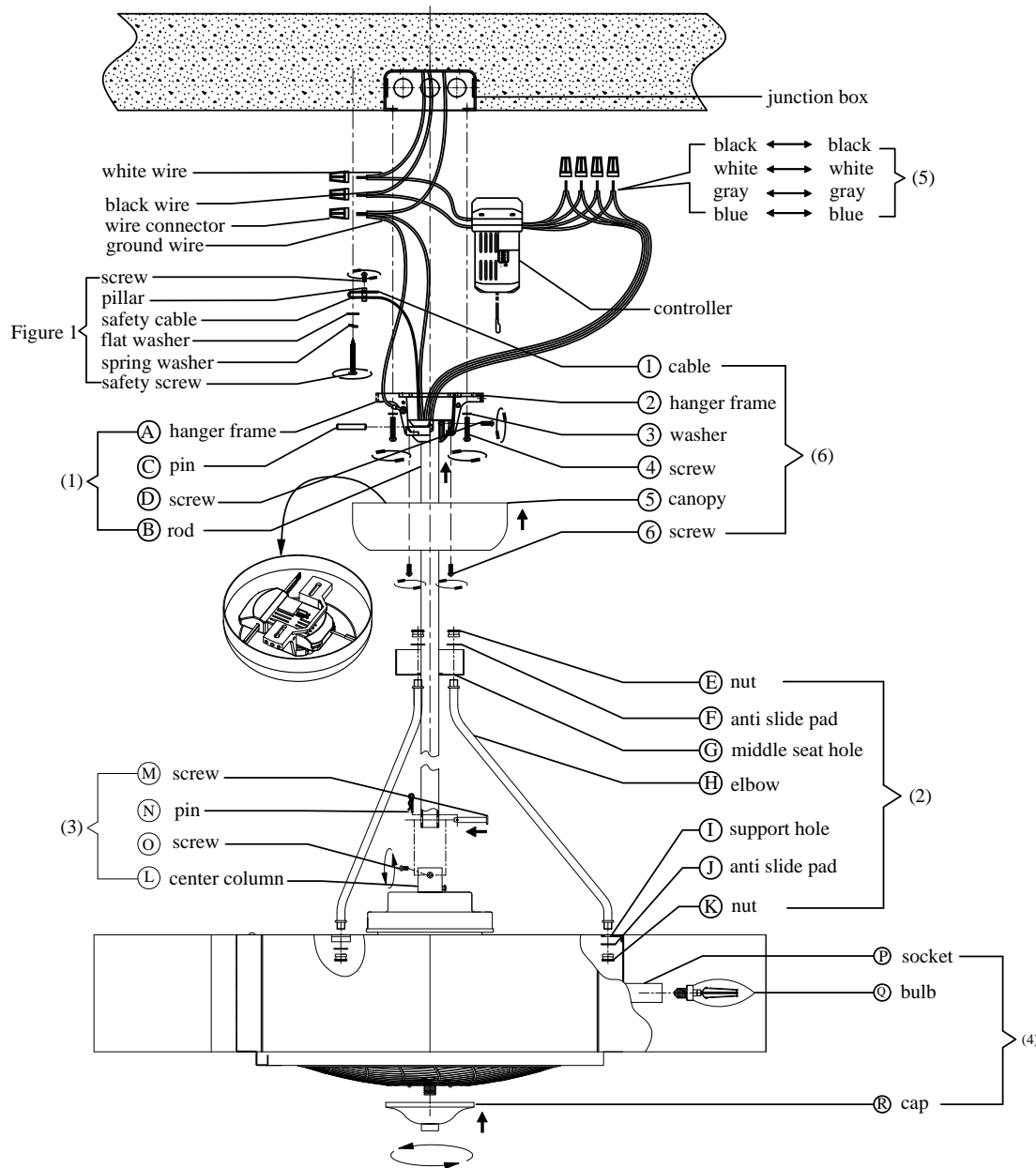


This product supports dimming

**Caution- The max wattage for this fan is 300w. Lamps exceeding this wattage could damage the control and receiver.**

## CEILING FAN LIGHT

### READ AND SAVE THESE INSTRUCTIONS



### CAUTION:

1. Be certain that no bare wire strands are exposed outside of the wire connectors
2. Disconnect power at main circuit breaker to prevent possible injury from electrical shock.
3. To reduce the risk of fire, electric shock, or personal injury, mount to outlet box marked (a) and use mounting screws provided with the outlet box.
4. Warning - to reduce the risk of electric shock, this fan must be installed with an isolating wall control/switch
5. Warning - to reduce the risk of fire, electric shock, or personal injury, mount to outlet box marked (a) acceptable for fan support of 15.9 kg or less, and use mounting screws provided with the outlet box

### ASSEMBLY & INSTALLATION INSTRUCTIONS

#### Notice:

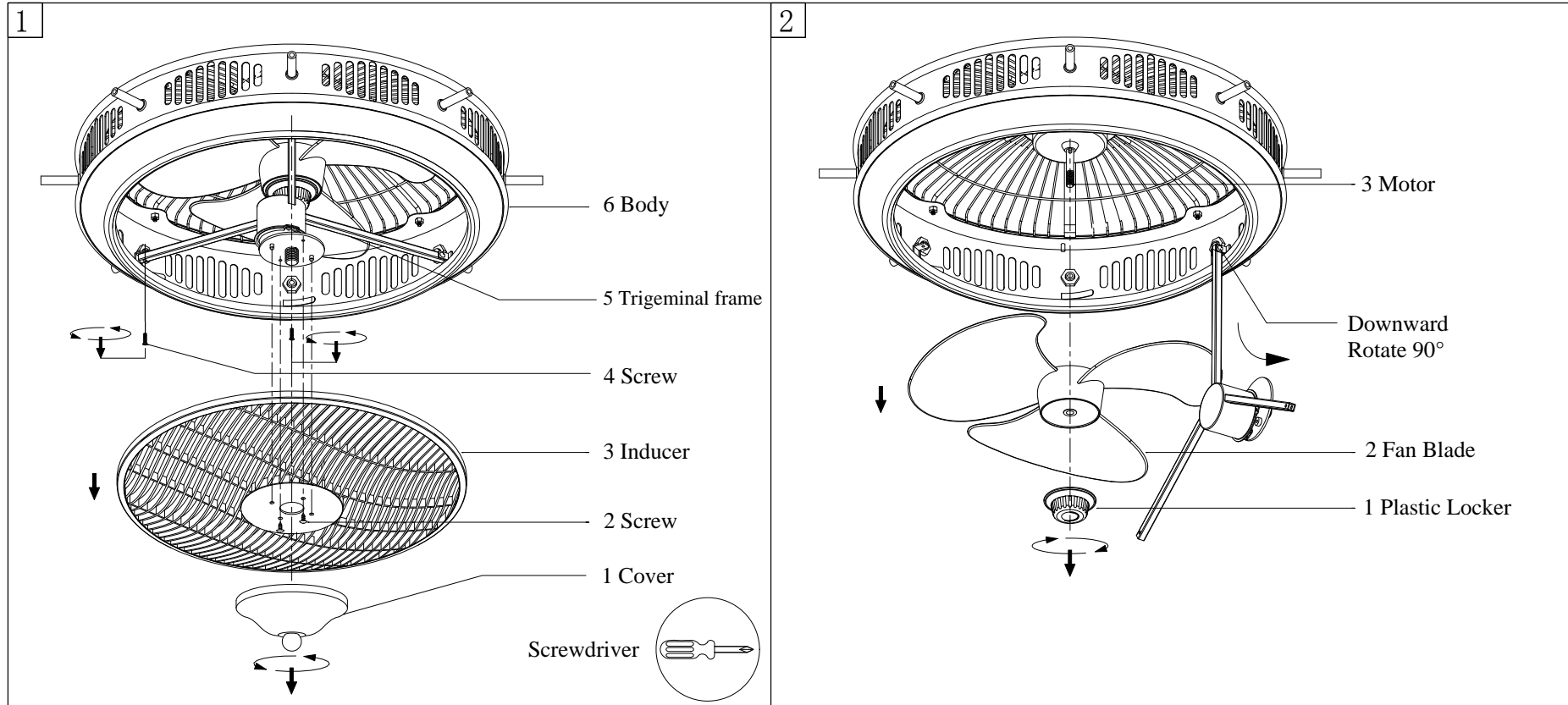
1. This product contains chemicals known to the state of California to cause cancer, birth defects and / or other reproductive harm. Thoroughly wash hands after installing, handling, cleaning, or otherwise touching this product.
2. Before using this product and doing maintenance, please read these instructions carefully and save them for future use.
3. This product is suitable for use with solid-state speed controls
4. The installation is to be in accordance with the national electrical code, ANSI/NFPA 70 and local codes.
5. After being wired, the ungrounded wire and grounded/grounding wire must be separated in two side of the outlet box
6. The splices, after being made, should be turned upward and pushed carefully up into the outlet box.
7. The remote controller is suitable for ceiling fan use.
8. This unit is packed completely for ceiling fan use.
9. This unit weighs 17.5kg.

Disconnect the power before installation.

#### Use and Installation:

Remove all fixture components and the parts bag from the carton.

- 1: Slip the rod (B) with three holes aligning through hanger frame (A), insert the pin (C) through the hole of the rod (B) and fall into the groove of the half ball tightened with screw(D).
- 2: Install the long straight section of the elbow (H) upward into the middle seat hole (G) with the opening upward, install the anti slide pad (F) and lock it with the nut (E), Install the short straight section of the elbow (H) downward into the support hole of the lower frame (I), install the anti slide pad (J), and lock it with the nut (K).
- 3: Put the rod (B) into the center column (L), align the side hole and hanger frame hole with screw (M). Fill the screw hole with pin (N). Lock the screws (O) on both sides.
- 4: screw the bulb(Q) into socket(P), screw the bottom cap(R) on the fan.
- 5: Connect main power wire from junction box with the wires of the controller, black with black, white with white and attach fixture ground wire and ground wire from outlet box with wire nut. Connect the output wires from controller and fixture wires with wire connector, colors: black with black, white with white, grey with grey, blue with blue.
- 6: An additional safety support is provided to prevent the fan from falling. Secure the safety cable to the ceiling joist with screw and washer, as illustrated in Figure 1. Thread the screw (4) through washer (3), screw the hanger frame into junction box firmly. Cover the junction box with canopy (5), fasten the hanger frame (2) with screws (6).



**Cleaning instructions:**

Turn off power before removing outer protective net as shown above.

Clean with wet cloth first then rub gently with dry cloth.

Caution: make sure that water can not run into center hole of fan blades. Keep blades dry before installation.