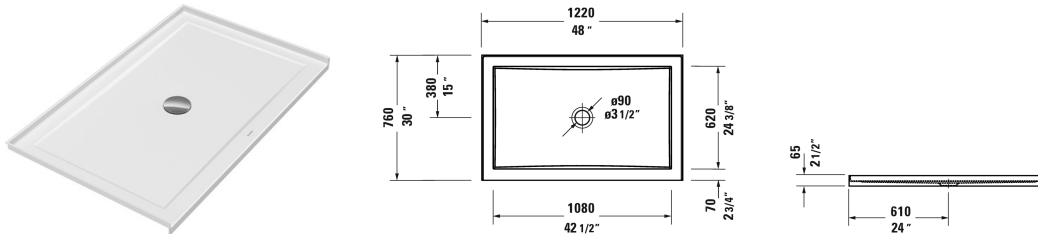


Architec Shower tray with panel # 72025300000090

| < 48" Inch > |



| Shower tray with panel | Dimension | Weight | Order number |
|---|----------------|---------|----------------|
| rectangle, with integrated panel and flange, central outlet, Sanitary acrylic, 2 1/2" Inch | | | |
| Colors | | | |
| 00 White | | | |
| Variant | | | |
| Shower tray | 48" x 30" Inch | 41.9 lb | 72025300000090 |
| Infobox | | | |
| * Complies with the following standards: CSA B45.5/IAPMO Z124, A grid drain or similar should be used in conjunction with a p-trap under the floor. A 4" grid drain is necessary for shower trays with a 3 1/2" (90 mm) outlet. | | | |

All drawings contain the necessary measurements which are subject to standard tolerances. They are stated in inch & mm and are non-binding. Exact measurements, in particular for customized installation scenarios, can only be taken from the finished ceramic piece.