

SPECIFICATIONS

FIGURE 74N

PIPING PRODUCTS



150# 2-PIECE DUCTILE IRON BACK-UP FLANGE

APPLICATIONS

For use with Nupi Niron PP-RCT Flange adaptors only

FEATURES

- 150# Flange drilling
- Cast ductile iron
- IPS sizes 2-24"
- Finish: Black epoxy coating, 100 micron MIN

PRODUCT SPECIFICATIONS

Standards

- Material: ASTM A536 grade 65-45-12
- Hardness: ISO 1083

Properties

- Tensile strength: 65 KSI minimum
- Yield strength: 45 KSI minimum
- Elongation: 12% minimum
- Hardness: HBW 160–210 (Brinell)

FIGURE NUMBER MATRIX

FNW FIGURE 74N	
Size Code	
2 = K	10 = 10
2-1/2 = L	12 = 12
3 = M	14 = 14
4 = P	16 = 16
6 = U	18 = 18
8 = X	20 = 20
	24 = 24



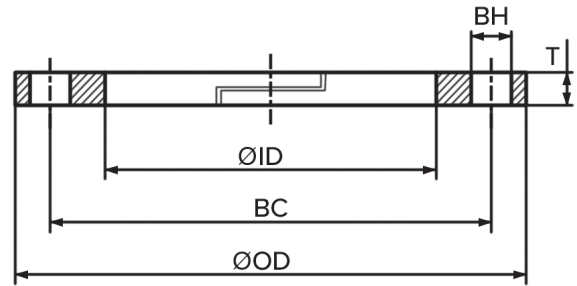
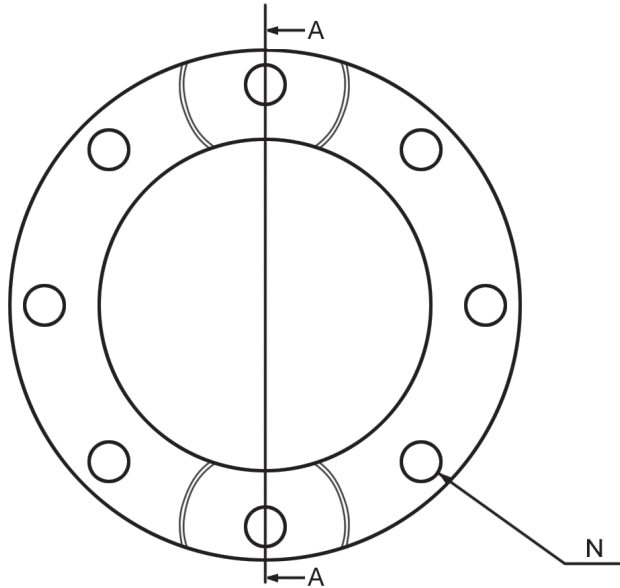
SPECIFICATIONS

FIGURE 74N
PIPING PRODUCTS



150# 2-PIECE DUCTILE IRON BACK-UP FLANGE

PARTS DIAGRAM



SECTION A

DIMENSIONS (INCHES)

SIZE	ØOD	ØID	T	BC	BH	N	Wt. (lbs)
2"	6.00	3.11	0.625	4.75	0.750	4	3.2
2-1/2"	7.00	3.70	0.625	5.50	0.750	4	4.0
3"	7.50	4.33	0.625	6.00	0.750	4	4.7
4"	9.00	5.35	0.625	7.50	0.750	8	6.3
6"	11.00	7.13	0.688	9.50	0.875	8	9.2
8"	13.50	9.29	0.688	11.75	0.875	8	12.5
10"	16.00	11.46	0.75	14.25	1.000	12	19.2
12"	19.00	13.03	0.875	17.00	1.000	12	32.9
14"	21.00	14.29	0.875	18.75	1.125	12	40.7
16"	23.50	16.42	0.875	21.25	1.125	16	47.8
18"	25.00	18.46	0.875	22.75	1.250	16	47.2
20"	27.50	20.47	1.00	25.00	1.250	20	63.7
24"	32.00	25.31	1.125	29.50	1.375	20	81.4

TOLERANCES

SIZE	ØOD	ØID	T	BC	BH
2"	+0.079 -0.059	±0.043	+0.118 -0	±0.059	+0.079 -0
2-1/2"	+0.079 -0.059	±0.043	+0.118 -0	±0.059	+0.079 -0
3"	+0.079 -0.059	±0.049	+0.118 -0	±0.059	+0.079 -0
4"	+0.079 -0.059	±0.049	+0.118 -0	±0.059	+0.079 -0
6"	+0.079 -0.059	±0.055	+0.118 -0	±0.059	+0.079 -0
8"	+0.079 -0.059	±0.055	+0.118 -0	±0.059	+0.079 -0
10"	+0.079 -0.059	±0.063	+0.118 -0	±0.079	+0.079 -0
12"	±0.118	±0.063	+0.118 -0	±0.079	+0.079 -0
14"	±0.118	±0.063	+0.118 -0	±0.098	+0.079 -0
16"	±0.118	±0.071	+0.118 -0	±0.098	+0.079 -0
18"	±0.118	±0.071	+0.118 -0	±0.098	+0.079 -0
20"	±0.118	±0.071	+0.118 -0	±0.098	+0.079 -0
24"	±0.118	±0.078	+0.118 -0	±0.098	+0.079 -0