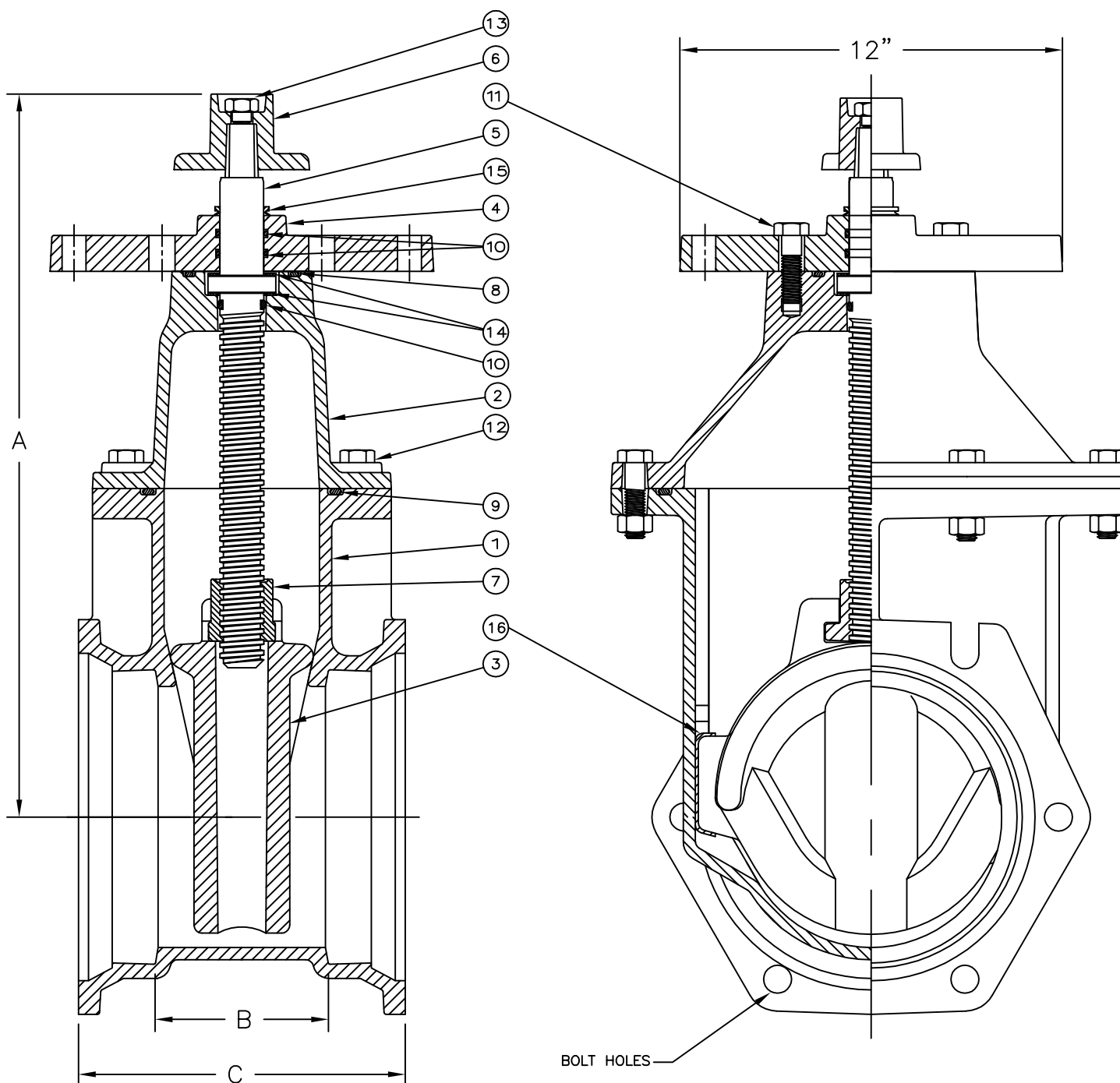


Resilient Wedge Gate Valve



Product

Resilient Wedge Gate Valve, Mech Joint
x Mech Joint With Post Indicator

Design Features

1. MECHANICAL JOINT END CONNECTIONS
IN ACCORDANCE WITH ANSI/AWWA C111/A21.11
2. EJ RW GATE VALVES CONFORM TO:
AWWA C515
AWWA C550 (COATING)
3. WORKING PRESSURE = 250 PSI
TEST PRESSURE = 500 PSI
4. POST INDICATOR VALVES ARE AVAILABLE (4"-12").

Components

ITEM #	DESCRIPTION	MATERIAL
1	BODY	DUCTILE IRON
2	BONNET	DUCTILE IRON
3	WEDGE	D.I./SYNTHETIC RUBBER
4	SEAL PLATE	DUCTILE IRON
5	STEM	MANGANESE BRONZE
6	OPERATING NUT	CAST IRON
7	STEM NUT	MANGANESE BRONZE
8	O-RING	RUBBER, BUNA-N
9	BODY O-RING	RUBBER, BUNA-N
10	O-RING	RUBBER, BUNA-N
11	HEX CAP SCREW	STAINLESS STEEL
12	HEX CAP SCREW W/NUT	STAINLESS STEEL
13	HEX CAP SCREW	STAINLESS STEEL
14	THRUST WASHER	POLYMER
15	SHAFT SEAL	RUBBER, BUNA-N
16	EAR CAP	POLYMER

Dimensions

VALVE	A	B	C
4"	15"	4 5/16"	9 5/16"
6"	18 9/16"	4"	9"
8"	22 11/16"	5 1/4"	10 1/4"
10"	27"	6 7/8"	11 5/8"
12"	31 1/8"	8"	15"

Drawing Revision

Designer: PFB 1/24/12
Revised By:

Disclaimer

Weights (lbs./kg) dimensions (inches/mm) and drawings provided for your guidance. We reserve the right to modify specifications without prior notice.

CONFIDENTIAL: This drawing is the property of EJ GROUP, Inc., and embodies confidential information, registered marks, patents, trade secret information, and/or know how that is the property of EJ GROUP, Inc. Copyright © 2011 EJ GROUP, Inc. All rights reserved.

Contact

800 626 4653
ejco.com



10" Resilient Wedge Gate Valve MJ 2" Operating Nut Indicator Plate OL

Product: 2201007

GENERAL

Product Type:	Valve
Specialty Series:	FlowMaster®
Classic Series:	RW

CHARACTERISTICS

Opening Direction:	Open left - (counter-clockwise)
Valve Size:	10
End Connection:	Mech Joint x Mech Joint
Valve Stem Material:	Manganese Bronze

FEATURES

Indicator Plate

