

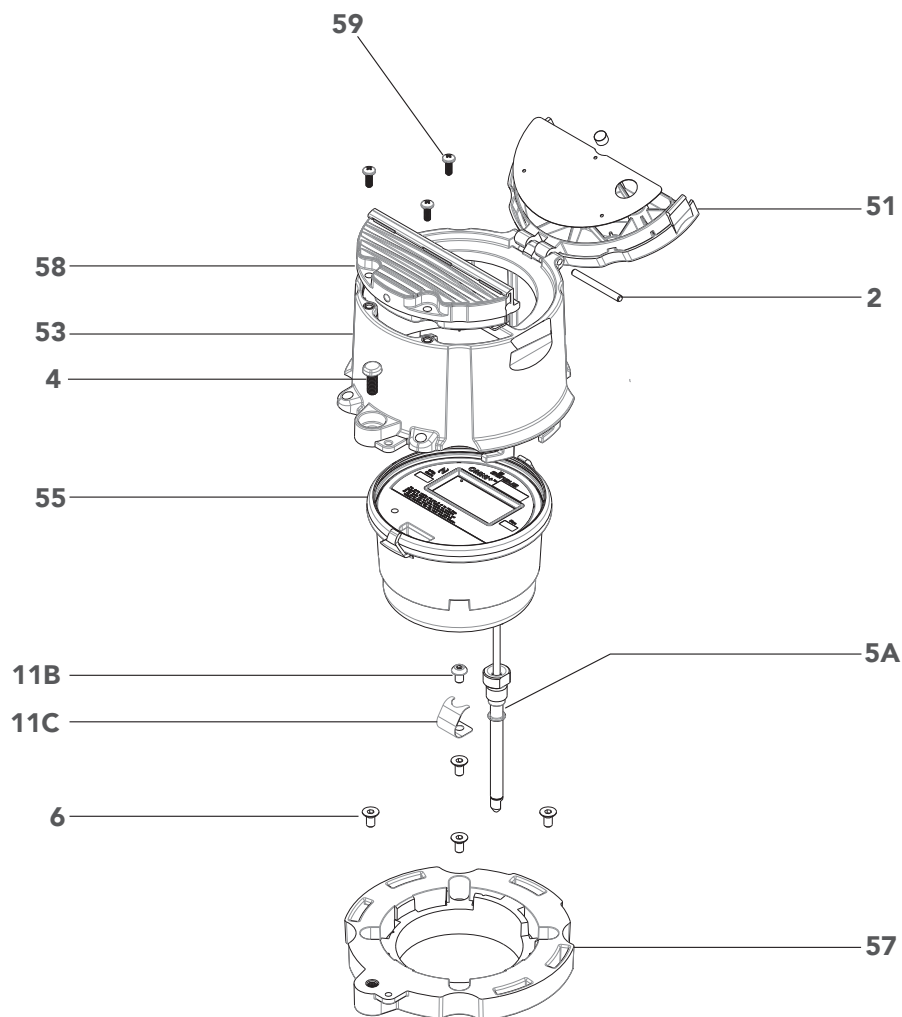


OMNI™ C²: 1-1/2", 2", 3", 4", 6", 8" and 10"

Parts List

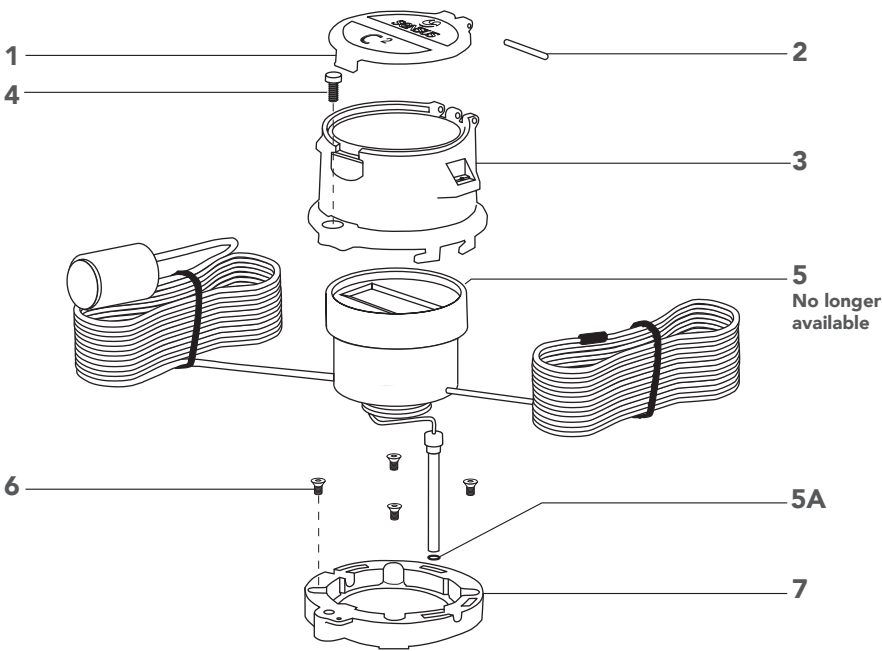
OMNI™+ ADVANCED EREGISTER

Illustration #	Name of Part
2	Hinge pin
4	Bonnet seal screw
5A	Register pick-up probe O-ring
6	Locking ring screw
11B	Screw, spring hold down
11C	Spring
51	C ² OMNI+ bonnet lid
53	OMNI+ bonnet
55	OMNI+ register
57	OMNI+ locking ring
58	OMNI+ optical adapter
59	OMNI+ optical adapter screw



OMNI C²: 1-1/2", 2", 3", 4", 6", 8" and 10"

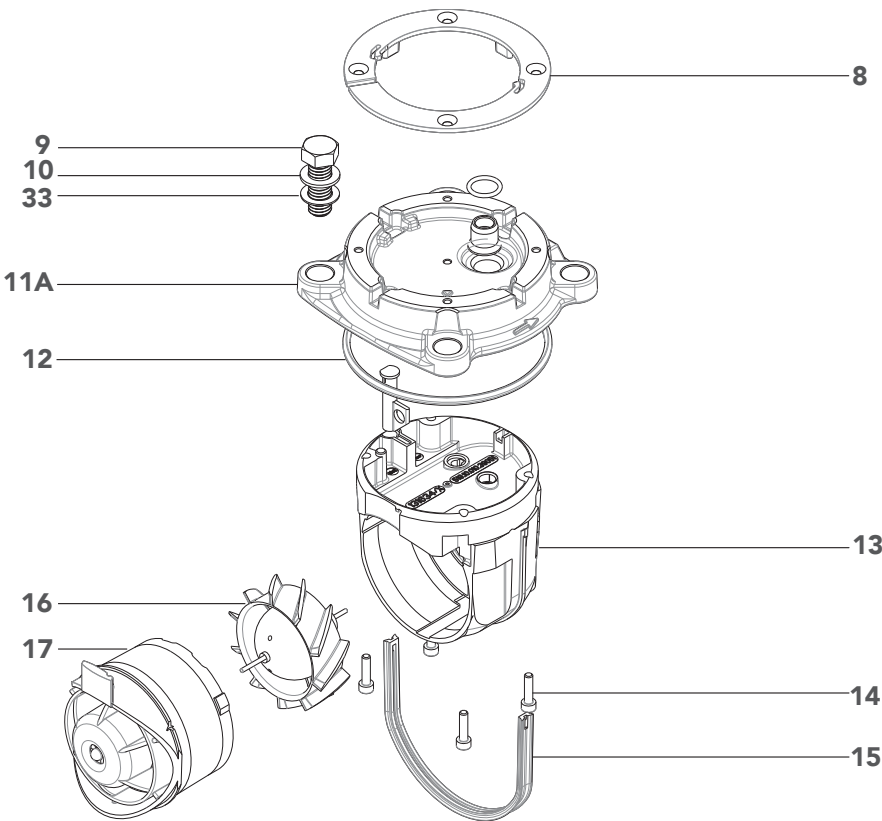
Parts List



ORIGINAL OMNI REGISTER

Illustration #	Name of Part
1	C ² OMNI bonnet lid
2	Hinge pin
3	Bonnet ¹
4	Bonnet seal screw
5A	Register pick-up probe O-ring
6	Locking ring screw
7	Locking ring

¹ For 3" or 4" C² rotor/bonnet replacement, order either for the 3" meter size or 4" meter size (see size on front of register bonnet).



CHAMBER ASSEMBLY: ALL SIZES

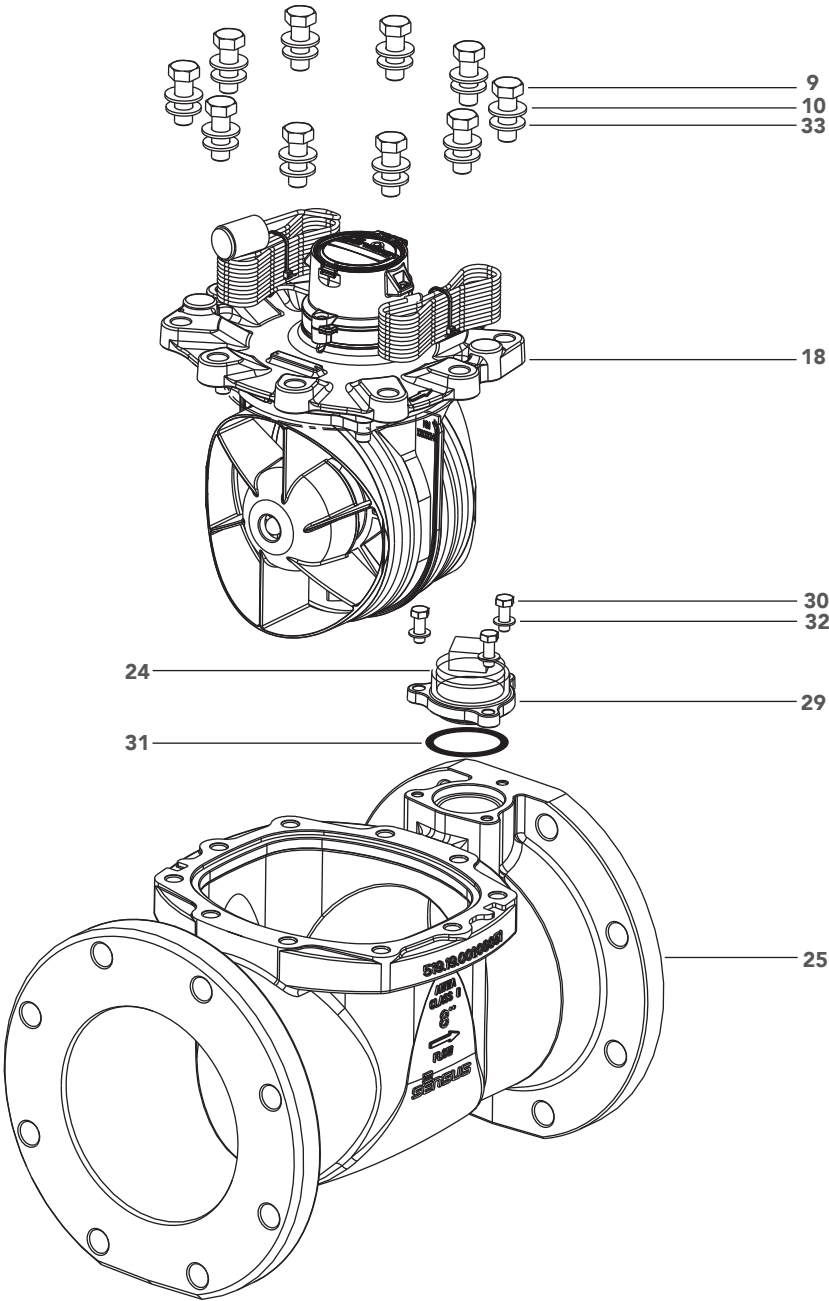
Illustration #	Name of Part
8	Fixing ring
9	Chamber cover bolt
10	Bonnet seal screw
11A	Locking ring screw
12	Chamber cover O-ring
13	Measuring insert
14	Measuring insert screw
15	Chamber seal gasket (not required on 10")
16	C ² rotor
17	C ² balance plate
33	Chamber cover washer - black nylon

Parts List

PAGE 3

OMNI C²: 1-1/2", 2", 3", 4", 6", 8" and 10"

Parts List

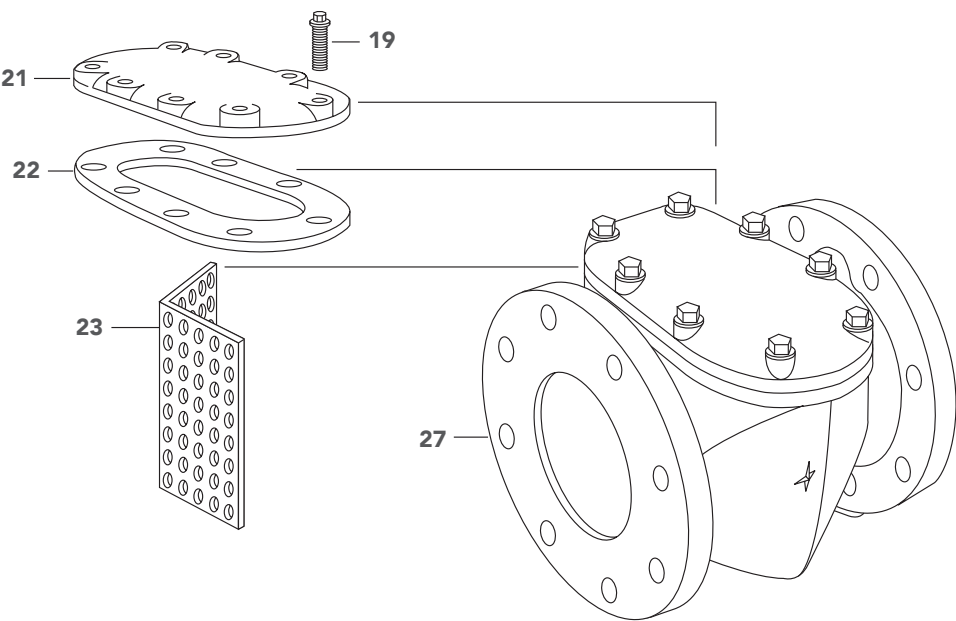


8" AND 10" MEASURING CHAMBER PARTS

Illustration #	Name of Part
9	Chamber cover bolt
10	Chamber cover bolt washer
18	Measuring chamber
24	Test plug
25	C ² maincase
28	Test port cap (not shown)
29	Test port cap adapter
30	Test port cap screws
31	Test port O-ring
32	Test port washer
33	Chamber cover washer - black nylon

OMNI C²: 1-1/2", 2", 3", 4", 6", 8" and 10"

Parts List



8" AND 10" STRAINER PARTS

Illustration #	Name of Part
19	Strainer cover cap screw
21	Strainer cover
22	Strainer cover gasket
23	Strainer screen
27	Strainer body



Xylem.com | Sensus.com

SENSUS | 637 Davis Drive | Morrisville, NC 27560 | 800.638.3748

©2024 Sensus. All products purchased and services performed are subject to Sensus’ terms of sale, available at either sensus.com/TC or 1-800-638-3748. Sensus reserves the right to modify these terms and conditions in its own discretion without notice to the customer. The Sensus logo is a registered trademark of Sensus.

This document is for informational purposes only, and SENSUS MAKES NO EXPRESS WARRANTIES IN THIS DOCUMENT. FURTHERMORE, THERE ARE NO IMPLIED WARRANTIES, INCLUDING WITHOUT LIMITATION, WARRANTIES AS TO FITNESS FOR A PARTICULAR PURPOSE AND MERCHANTABILITY. ANY USE OF THE PRODUCTS THAT IS NOT SPECIFICALLY PERMITTED HEREIN IS PROHIBITED.