

# SCALA1 SI

Service instructions





# SCALA1 SI

---

## English (GB)

Service instructions .....	4
----------------------------	---

## Original service instructions

## Table of contents

<b>1. General information</b>	<b>4</b>
1.1 Hazard statements	4
1.2 Notes	4
<b>2. Safety information for working on the product</b>	<b>4</b>
<b>3. Maintenance</b>	<b>5</b>
<b>4. Dismantling the product</b>	<b>6</b>
4.1 Before dismantling the product	6
4.2 Removing the pump cover	6
4.3 Removing the pressure switch	6
4.4 Removing the connection module housing	6
4.5 Removing the membrane	6
4.6 Removing the chamber stack	7
4.7 Removing the shaft seal	7
4.8 Removing the control box cover	8
4.9 Removing the printed circuit board cover inside the control box	8
4.10 Removing the printed circuit board from the control box	8
4.11 Replacing the printed circuit board	8
4.12 Removing the capacitor from the control box	8
4.13 Removing the motor	9
4.14 Removing the motor stool and the flange	9
<b>5. Assembling the product</b>	<b>9</b>
5.1 Fitting the motor stool and the flange	9
5.2 Fitting the motor	9
5.3 Fitting the shaft seal	10
5.4 Assembling the chamber stack	10
5.5 Fitting the chamber stack	10
5.6 Connecting the capacitor to the printed circuit board	11
5.7 Fitting the printed circuit board	11
5.8 Fitting the membrane	11
5.9 Fitting the cover for hydraulic	11
5.10 Fitting the pressure switch	11
5.11 Fitting the pump cover	11
<b>6. Additional information</b>	<b>12</b>
6.1 Lubricant	12
6.2 Torques	12
6.3 Nameplate for SCALA1	12
6.4 Type key for SCALA1	12
6.5 Fault finding the product	12
6.6 SCALA1 exploded view	13

## 1. General information

This appliance can be used by children aged from 8 years and above and persons with reduced physical, sensory or mental capabilities or lack of experience and knowledge if they have been given supervision or instruction concerning use of the appliance in a safe way and understand the hazards involved.

Children shall not play with the appliance. Cleaning and user maintenance shall not be made by children without supervision.



Read this document before you install the product. Installation and operation must comply with local regulations and accepted codes of good practice.

## 1.1 Hazard statements

The symbols and hazard statements below may appear in Grundfos installation and operating instructions, safety instructions and service instructions.

**DANGER**

Indicates a hazardous situation which, if not avoided, will result in death or serious personal injury.

**WARNING**

Indicates a hazardous situation which, if not avoided, could result in death or serious personal injury.

**CAUTION**

Indicates a hazardous situation which, if not avoided, could result in minor or moderate personal injury.

The hazard statements are structured in the following way:

**SIGNAL WORD****Description of the hazard**

Consequence of ignoring the warning

- Action to avoid the hazard.

## 1.2 Notes

The symbols and notes below may appear in Grundfos installation and operating instructions, safety instructions and service instructions.



Observe these instructions for explosion-proof products.



A blue or grey circle with a white graphical symbol indicates that an action must be taken.



A red or grey circle with a diagonal bar, possibly with a black graphical symbol, indicates that an action must not be taken or must be stopped.



If these instructions are not observed, it may result in malfunction or damage to the equipment.



Tips and advice that make the work easier.

## 2. Safety information for working on the product

**DANGER****Explosion risk**

Death or serious personal injury

- Do not use the product for flammable liquids such as diesel oil, petrol or similar liquids. The product must only be used for water.

**WARNING****Electric shock**

Death or serious personal injury

- Do not use the product for aggressive liquids. The product must only be used for water.

**WARNING****Toxic material**

Death or serious personal injury

- Do not use the product for toxic liquids. The product must only be used for water.

**WARNING****Electric shock**

Death or serious personal injury

- Switch off the power supply before you start any work on the product. Make sure that the power supply cannot be switched on accidentally.

**WARNING****Electric shock**

Death or serious personal injury

- Mount the product horizontally to avoid condensation in the electrical insulation inside the control box.



**WARNING**  
**Chemical hazard**

- Death or serious personal injury
- Before the pump is used for supplying drinking water, flush the pump thoroughly with clean water.

**WARNING**  
**Biological hazard**

- Death or serious personal injury
- Before the pump is used for supplying drinking water, flush the pump thoroughly with clean water.

**WARNING**  
**Electric shock**

- Death or serious personal injury
- The protective earth (PE) of the power outlet must be connected to the protective earth of the pump. The plug must have the same PE connection system as the power outlet.

**WARNING**  
**Electric shock**

- Death or serious personal injury
- Make sure that the power plug delivered with the product is in compliance with local regulations.
  - The plug must have the same protective earth (PE) connection system as the power outlet. If not, use a suitable adapter if allowed by local regulations.

**WARNING**  
**Electric shock**

- Death or serious personal injury
- Power cables without a plug must be connected to a supply disconnecting device incorporated in the fixed wiring according to the local wiring rules.
  - The protective earth (PE) of the power outlet must be connected to the protective earth of the pump. The plug must have the same PE connection system as the power outlet.

**WARNING**  
**Chemical hazard**

- Death or serious personal injury
- Make sure that the product has only been used for water. If the product has been used for pumping aggressive liquids, flush the system with clean water before you start work on the product.

**WARNING**  
**Biological hazard**

- Death or serious personal injury
- Make sure that the product has only been used for water. If the product has been used for pumping aggressive liquids, flush the system with clean water before you start work on the product.

**WARNING**  
**Pressurised system**

- Death or serious personal injury
- Before dismantling the pump, drain the system or close the isolating valves on both sides of the pump. Slowly loosen the drain plug and unpressurise the system.

**CAUTION**  
**Impurities in the water**

- Minor or moderate personal injury
- Before the pump is used for supplying drinking water, flush the pump thoroughly with clean water.
  - Use spare parts approved by Grundfos.

**WARNING**  
**Electric shock**

- Death or serious personal injury
- Check that the product is intact and not cracked. Especially if the product was not drained before standstill or was exposed to frost.

**WARNING**  
**Moving parts**

- Death or serious personal injury
- Make sure that the product cannot start unexpectedly while deblocking the pump shaft.

**3. Maintenance**

The pump is maintenance-free, but we recommend that you check and clean the condensation plugs and integrated non-return valve once per year or as needed.

## 4. Dismantling the product



Position part numbers (numbers in brackets) refer to section SCALA1 exploded view.

### 4.1 Before dismantling the product

Follow these steps before starting dismantling the pump.

1. Disconnect the power supply to the motor.
2. Remove power cable according to local regulations.
3. Gradually loosen the valves to release the pressure in the pump.
4. Remove the drain plug to drain the pump.

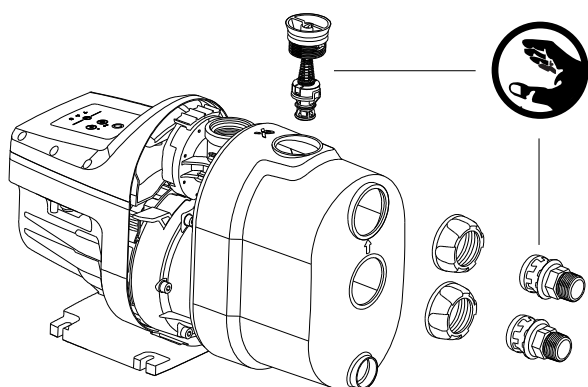
### 4.2 Removing the pump cover

1. Loosen the union nuts (100) with your hand and remove the inlet and outlet connections – fittings (100a), and O-ring (100b) – from the pump.



Use the tip of a small flat screwdriver to remove the O-ring.

2. Remove the non-return valve discharge (65a) and the O-ring (65b) from the top of the pump.
3. Gently push the locking tab at the bottom of the pump with a flat screwdriver.
4. Loosen and pull away the pump cover (403) to remove it from the pump.



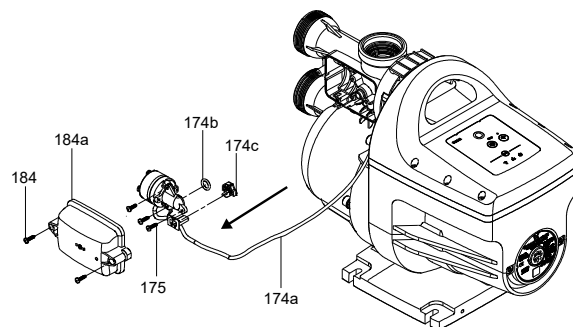
TM075488

### Removing the pump cover

### 4.3 Removing the pressure switch

Follow these steps to remove the pressure switch:

1. Loosen and remove the screws that hold the pressure switch cover (184).
2. Remove the pressure switch cover.
3. Disconnect the cable of the pressure switch from the clips that hold it in place.
4. Loosen the screws which hold the pressure switch to the pump.
5. Remove the pressure switch.



TM075714

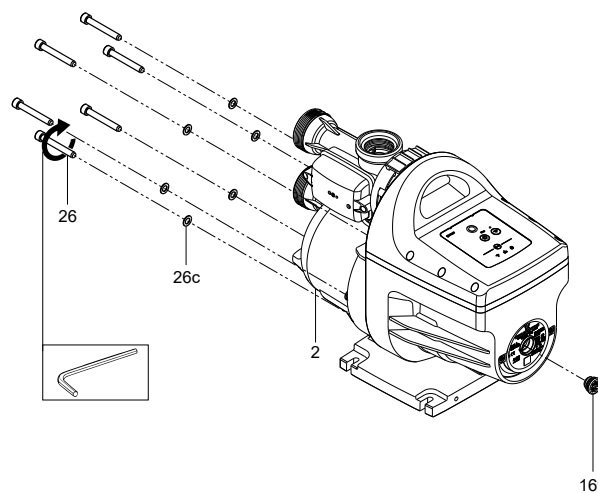
### Removing the pressure switch



Tape the pressure switch to the side of the pump body while you continue the dismantling.

### 4.4 Removing the connection module housing

1. Loosen and remove the screws (26) that hold the connection module housing. Remove the washers (26c).
2. Remove the plug (169) at the end of the shaft.
3. Remove the connection module housing (2).

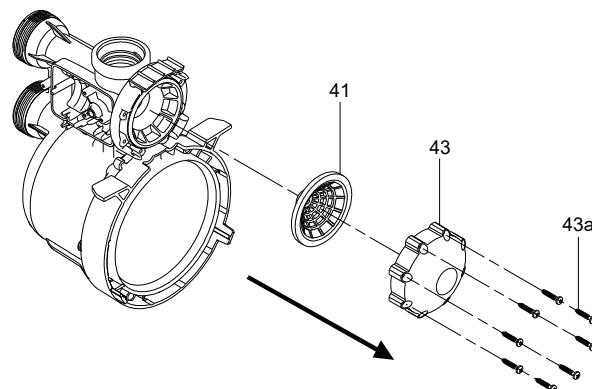


TM075709

### Removing the connection module housing

### 4.5 Removing the membrane

1. Loosen and remove the eight screws (43a) that hold the cover for the membrane.
2. Remove the cover for the membrane (43).
3. Pull out the membrane (41).

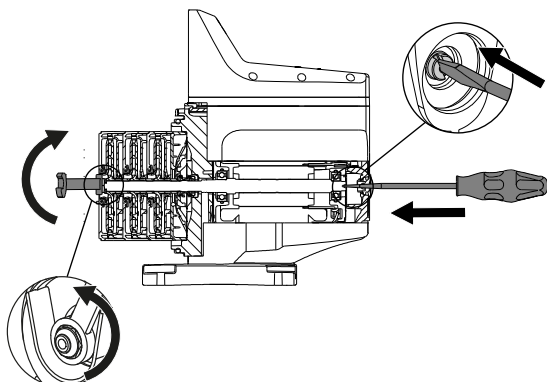


TM075725

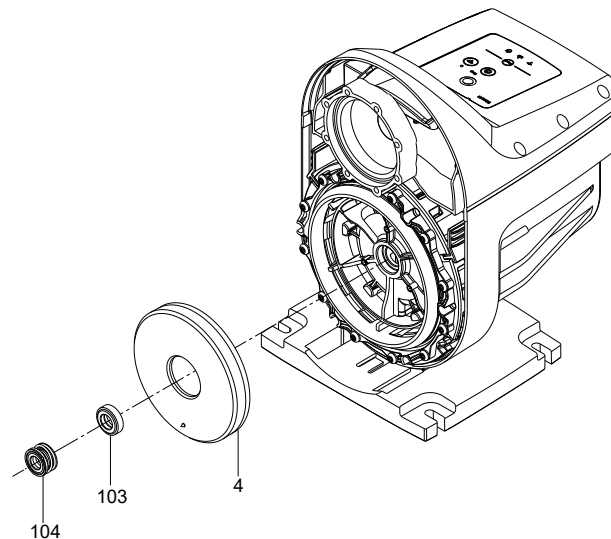
### Removing the pump membrane

### 4.6 Removing the chamber stack

1. Remove the plug (169) on the nameplate to access the shaft end.
2. Find the locknut (67) at the non-drive end of the shaft. To remove the locking nut, place a 13-mm spanner on the nut and place the handle so that it rests against a flat surface to avoid spinning.
3. To loosen the shaft, use a large flat screwdriver at the drive-end and, at the same time, hold the 13-mm spanner at the non-drive end.



TM075694

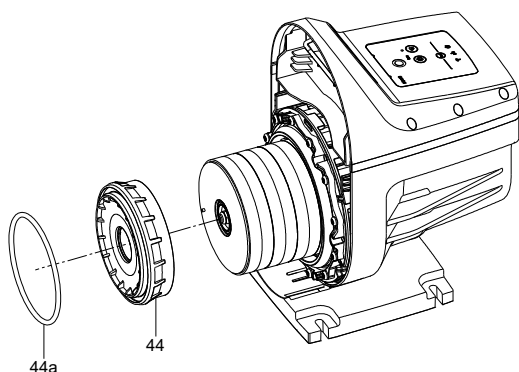


TM076148

Shaft seal and seal disc

#### Loosening the shaft

4. Remove the locknut (67) and the washer (66).
5. Remove the impellers and chambers, starting with the inlet part for the hydraulic (44) and finishing with the final diffuser (3).



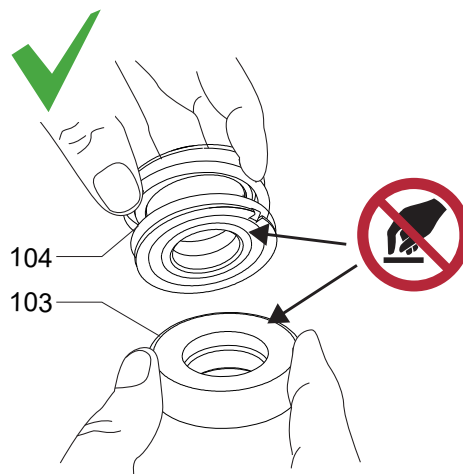
TM076147

#### Removal of inlet part of hydraulic

### 4.7 Removing the shaft seal



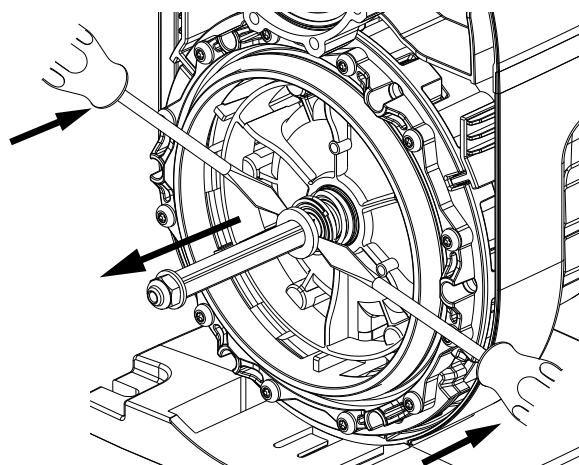
Do not touch the ceramic faces of the shaft seal.



TM075708

How to correctly hold the shaft seal

1. Remove the washer (102).
2. Pull off the rotating part of the shaft seal (104) by inserting the tip of two small flat screwdrivers.



TM076170

Removing the rotating part of the shaft seal

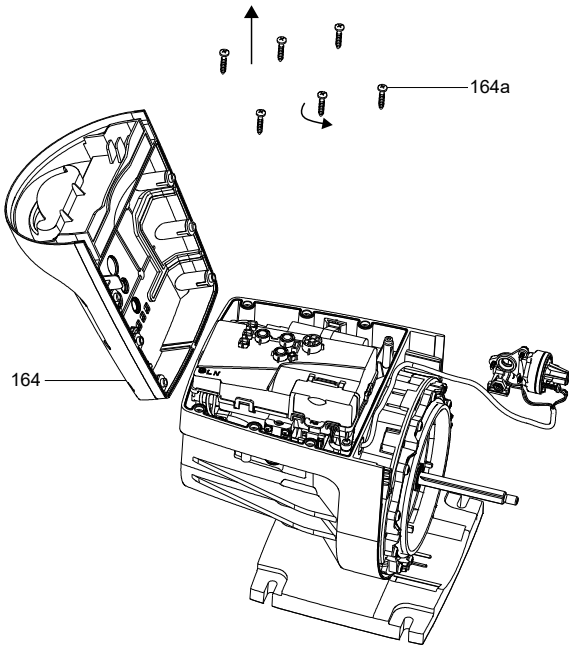
3. Remove the stationary part of the shaft seal (103) by inserting the tip of two small flat screwdrivers and pulling it off.

#### 4.8 Removing the control box cover



Always use an antistatic service kit when handling electronic components. This will prevent static electricity from damaging components.

1. Remove the six pan-head Phillips screws (164a) that hold the the cover.



TM075711

##### Removing the control box cover

2. Carefully remove the control box cover (164).

#### 4.9 Removing the printed circuit board cover inside the control box

1. Gently loosen the locking tabs that hold the printed circuit board cover.



Use the tip of a small flat screwdriver to open the locking tabs.

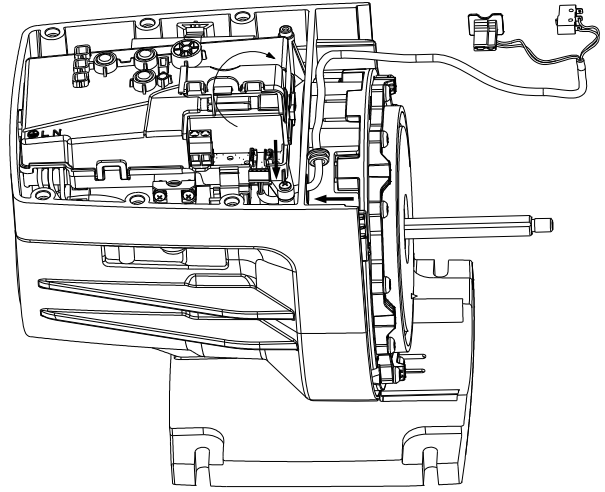
2. Lift and remove the printed circuit board cover (181a).

#### 4.10 Removing the printed circuit board from the control box

1. Disconnect the wires.
2. Loosen the 3 screws that hold the printed circuit board (181).
3. Lift the printed circuit board to remove it from the control box.
4. Remove the connection pin (181c) that connects the printed circuit board to the motor.

#### 4.11 Replacing the printed circuit board

1. Remove the lid.



TM075729

##### Opening lid and disconnecting the wires

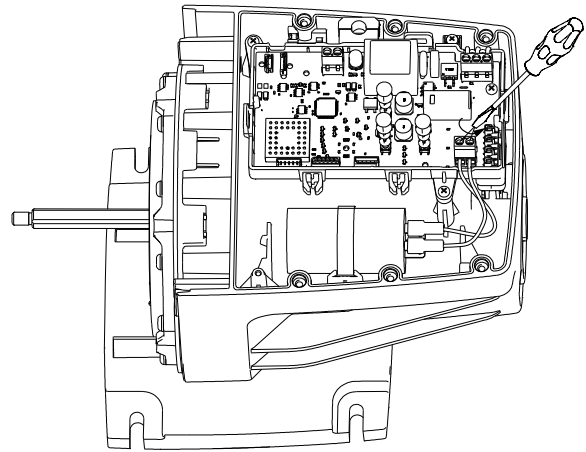
2. Disconnect the wires.
3. Remove the screw holding the printed circuit board.
4. Replace the printed circuit board. Make sure that the board fits on the four metal tabs in the corner.
5. Tighten the screw.
6. Reconnect the wires (two blue to capacitor + three coloured for power + pressure switch wire plug).

#### 4.12 Removing the capacitor from the control box



When you replace the capacitor, make sure to select the appropriate spare capacitor (230V or 115V) for your pump.

1. Disconnect the wires that connect the capacitor (161) to the printed circuit board (181).



TM077547

##### Removing the capacitor from the control box

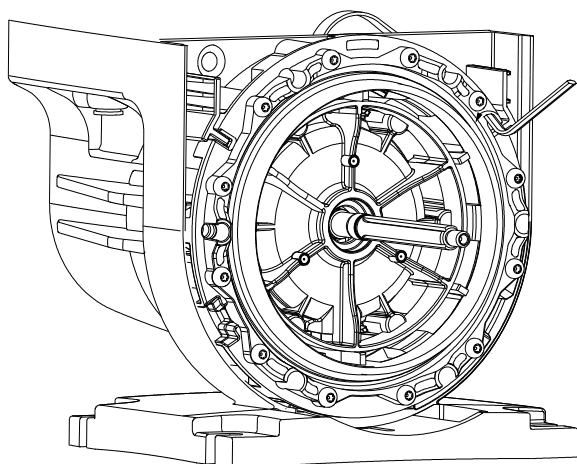
2. Pull the capacitor from under the clip.

#### 4.13 Removing the motor



Note that the motor stool is on the outer end of the motor and the flange is on the inner end of the motor.

1. Loosen and remove the hex screws (152) that hold the motor stool (156b) to the outer end of the motor (150) using a size 10 hex key.



TM077560

#### Loosening and removing the hex screws (152)

2. Place the hex key on one of the screw heads (152) that hold the motor stool (156b) to the motor (150) and pull it out.
3. Apply pressure to pull out the motor stool and the motor.
4. The motor comes off together with the motor stool (front) and the flange (rear).
5. Make sure you do not break the connection pin on the back of the motor.

#### 4.14 Removing the motor stool and the flange

1. Mark the position of the motor in the flange before removing the hex screws (206).
2. Loosen and remove the hex screws (206) that hold the flange (156a) to the outer motor stool (156b).
3. Remove the motor from the motor stool.
4. Remove the O-ring (150b).

### 5. Assembling the product

#### 5.1 Fitting the motor stool and the flange

1. Place the O-ring (150b) in the motor stool (156b).
2. Mount the motor (150) in the motor stool (156b).
3. Align the motor with the flange according to the positions that were marked while dismantling the pump.
4. Attach the flange (156a) to the motor stool (156b).

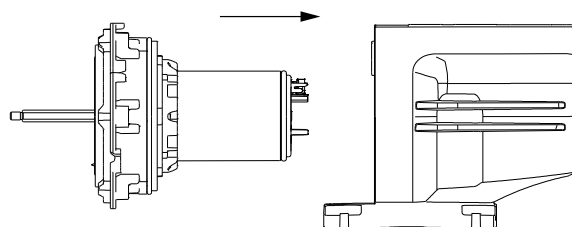


You can hold the shaft in a vice while you are attaching the flange.

5. Tighten the hex screws (206) in the flange that secure the motor (150) in the motor stool. Use a maximum torque of 2.6-3.2 Nm.
6. Place the O-ring (52) on the outer end of the motor (150).
7. Place the O-ring (53) on the motor stool (156b).

#### 5.2 Fitting the motor

1. Insert the motor into pump body.



TM077559

#### Inserting the assembled motor



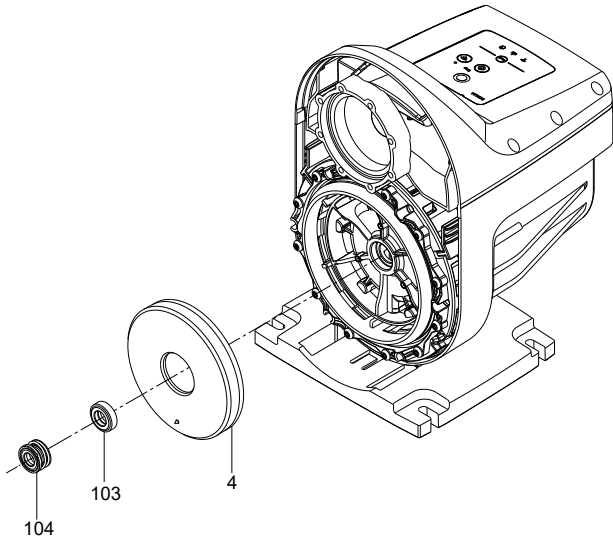
Do not damage the connection pin.

2. Tighten the hex screws (152) that hold the motor in the pump body. Use a maximum torque of 2.6-3.8 Nm.
3. Make sure that the connection pin (181c) can be inserted in the motor part before proceeding.

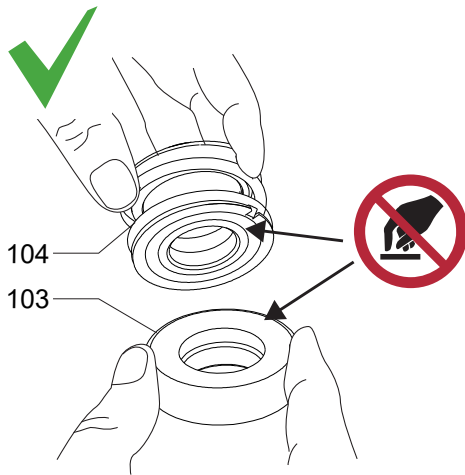
### 5.3 Fitting the shaft seal



Do not touch the ceramic faces of the shaft seal.



Shaft seal and seal disc



How to correctly hold the shaft seal

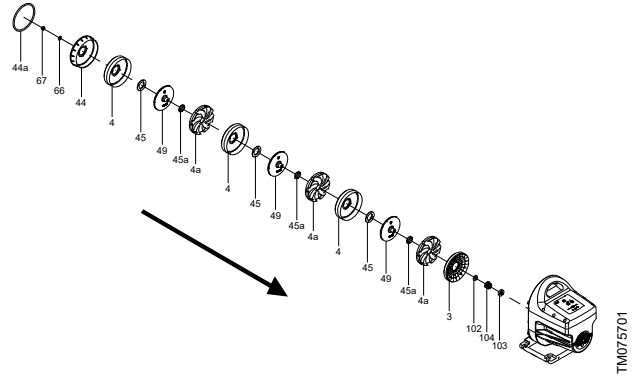
1. Lubricate both sealing parts with soapy water.
2. Place the stationary part of the shaft seal (103) in the outer motor stool (156b).
3. Lubricate the shaft with soapy water.
4. Place the rotating part of the shaft seal (104) on the shaft.
5. Place the washer (102) on the shaft.

### 5.4 Assembling the chamber stack



Do not touch the inner ceramic faces of the shaft seals (103) (104).

1. Make sure you have all components ready and place them on the shaft of the motor unit (150) in the following order.



Assembling the chamber stack

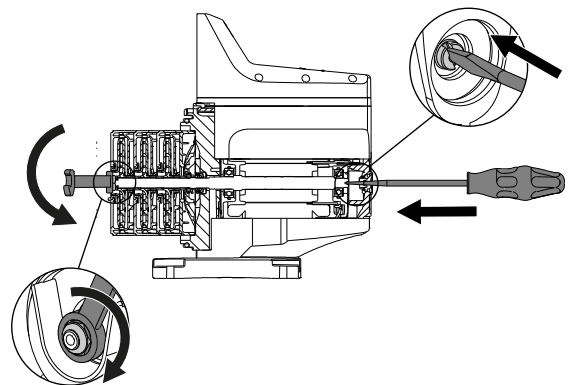
- a. Shaft seal, stationary part (103)
- b. Shaft seal, rotating part (104)
- c. Diffusor, final (3)
- d. Diffusor (4a)
- e. Backward bushing for impeller (45a)
- f. Impeller (49)
- g. Forward bushing for impeller (45)
- h. Chamber (4)
- i. Inlet part for hydraulic (44)
- j. Washer (66)
- k. Lock nut (67)
- l. O-ring (44a)

### 5.5 Fitting the chamber stack



Make sure that all the components are on the shaft in the right order.

1. Once all chambers and impellers are in place, fasten the shaft. Use a large flat screwdriver at the drive-end and a 13-mm spanner at the non-drive end. Use a torque of 8 Nm.

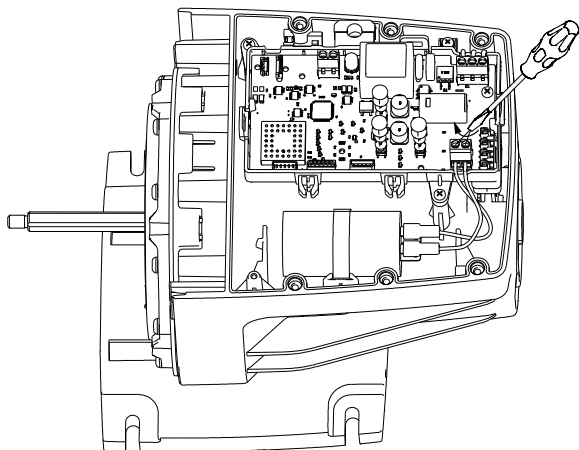


2. Fit the plug on the nameplate to cover the shaft end.



## 5.6 Connecting the capacitor to the printed circuit board

- Put the capacitor (161) inside the control box and connect it to the printed circuit board (181b).



TM07548

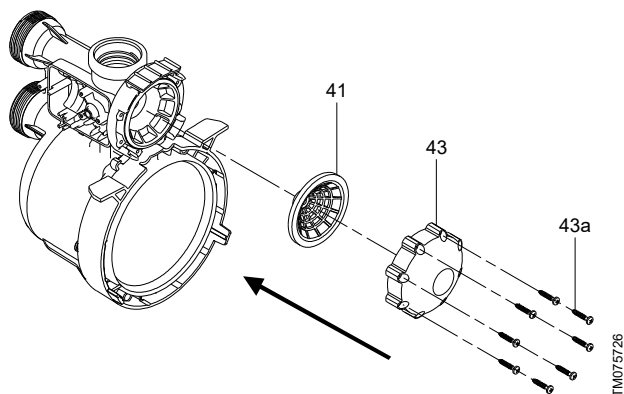
Connecting the capacitor to the printed circuit board

## 5.7 Fitting the printed circuit board

- Place the printed circuit board (181) into the control box. Make sure that the printed circuit board fits on the four metal tabs in the corner.
- Tighten the three screws that hold the printed circuit board.
- Reconnect the wires (two blue to capacitor + three-coloured for power + pressure switch wire plug).
- Refit the upper enclosure.

## 5.8 Fitting the membrane

- Insert the membrane (41) into the smaller hole of the connection part for hydraulic (2).
- Fit the cover for the membrane (43) on top of the membrane.
- Fit the eight screws that hold the cover for membrane (43) and the membrane (41) onto the connection part for hydraulic (2).
- Tighten the screws.

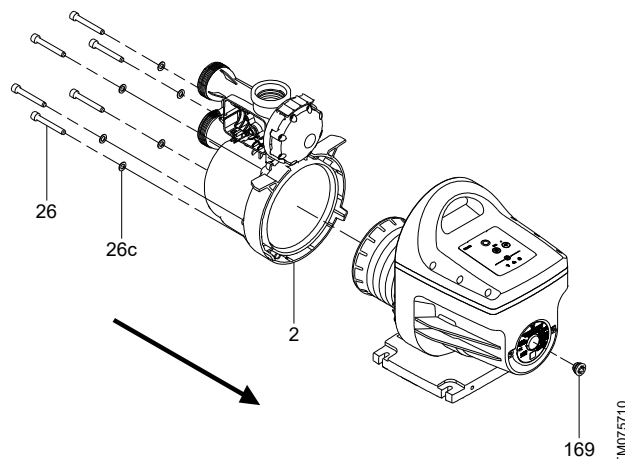


TM075726

Fitting the pump membrane

## 5.9 Fitting the cover for hydraulic

- Prepare the six screws that hold the cover for hydraulic (2) to the pump.
- Place the cover for hydraulic over the chamber stack and the shaft and push it as close to the pump as possible.
- Place a washer on each screw, and tighten all screws with a torque of 8 Nm.

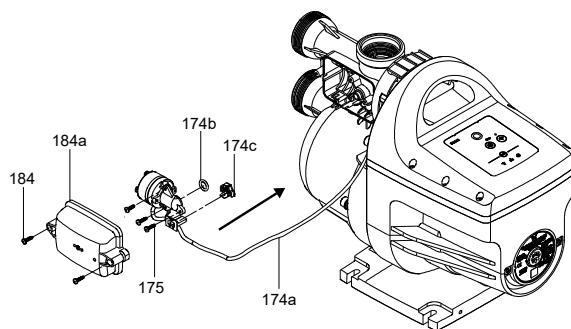


TM075710

Fitting the cover for hydraulic

## 5.10 Fitting the pressure switch

- Prepare the O-ring (174b), the inductive sensor (174c) and the three screws (175) that hold the pressure switch onto the pump.
- Place the O-ring (174b) on the pressure switch fitting.
- Fasten the pressure switch onto the pump with the screws.
- Connect the pressure switch coupling (174a) to the printed circuit board if it is disconnected.
- As a final step, attach the pressure switch cover on top of the pressure switch.

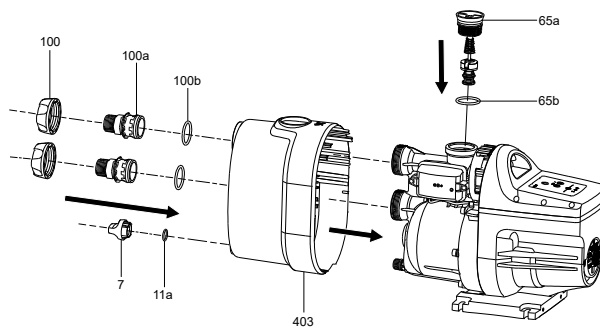


TM075713

Fitting the pressure switch

## 5.11 Fitting the pump cover

- Place the pump cover (403) on the pump housing until you hear a click of the locking tab.
- Fit the inlet and outlet connections, the union nut (100), the fitting (100a) and the O-ring (65b) onto the pump.
- Screw the non-return valve (65a) with its O-ring (65b) onto the pump.



TM075718

Fitting the pump cover

## 6. Additional information

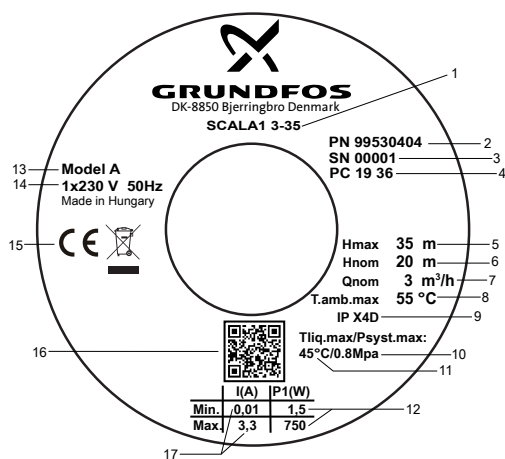
### 6.1 Lubricant

We recommend using soapy water for the shaft seal and ROCOL SAPPHIRE Aqua-Sil for the O-rings.

### 6.2 Torques

Pos.	Description	Torque [Nm]
206	Screws that hold the flange (156a) to the motor (150)	3.0
152	Screws for motor stool (156b)	3.5
26	Screws for connection module housing (2)	7.0
67	Lock nut for chamber stack	8.0

### 6.3 Nameplate for SCALA1



TM075340

Example of nameplate

Pos.	Description
1	Type designation
2	Product number
3	Serial number
4	Production code (year and week)
5	Max. head
6	Nominal head
7	Nominal flow rate
8	Max. ambient temperature
9	Enclosure class
10	Max. operating pressure
11	Max. liquid temperature
12	Minimum and maximum rated power
13	Model
14	Voltage and frequency
15	Approvals
16	Product QR code
17	Minimum and maximum rated current

### 6.4 Type key for SCALA1

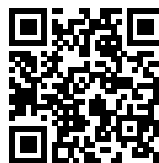
Example:

SCALA1 . 5- . 25 . 1x230V . 50 Hz . SCHUKO

	Description
SCALA1	Type range
3	Max. flow rate [m <sup>3</sup> /h]
5	
25	Max. head [m]
35	
45	
55	Voltage [V]
1x230V	
1x115V	Frequency [Hz]
50 Hz	
60 Hz	
SCHUKO (Type E/F)	
No plug	
Thailand (Type O)	
Australia (Type I)	
UK (Type G)	
US (Type NEMA 5-15, NEMA 6-15)	
Argentina (Type I)	
	Plug type

### 6.5 Fault finding the product

Fault finding procedures are described in the installation and operating instructions. Use the QR code or link below:

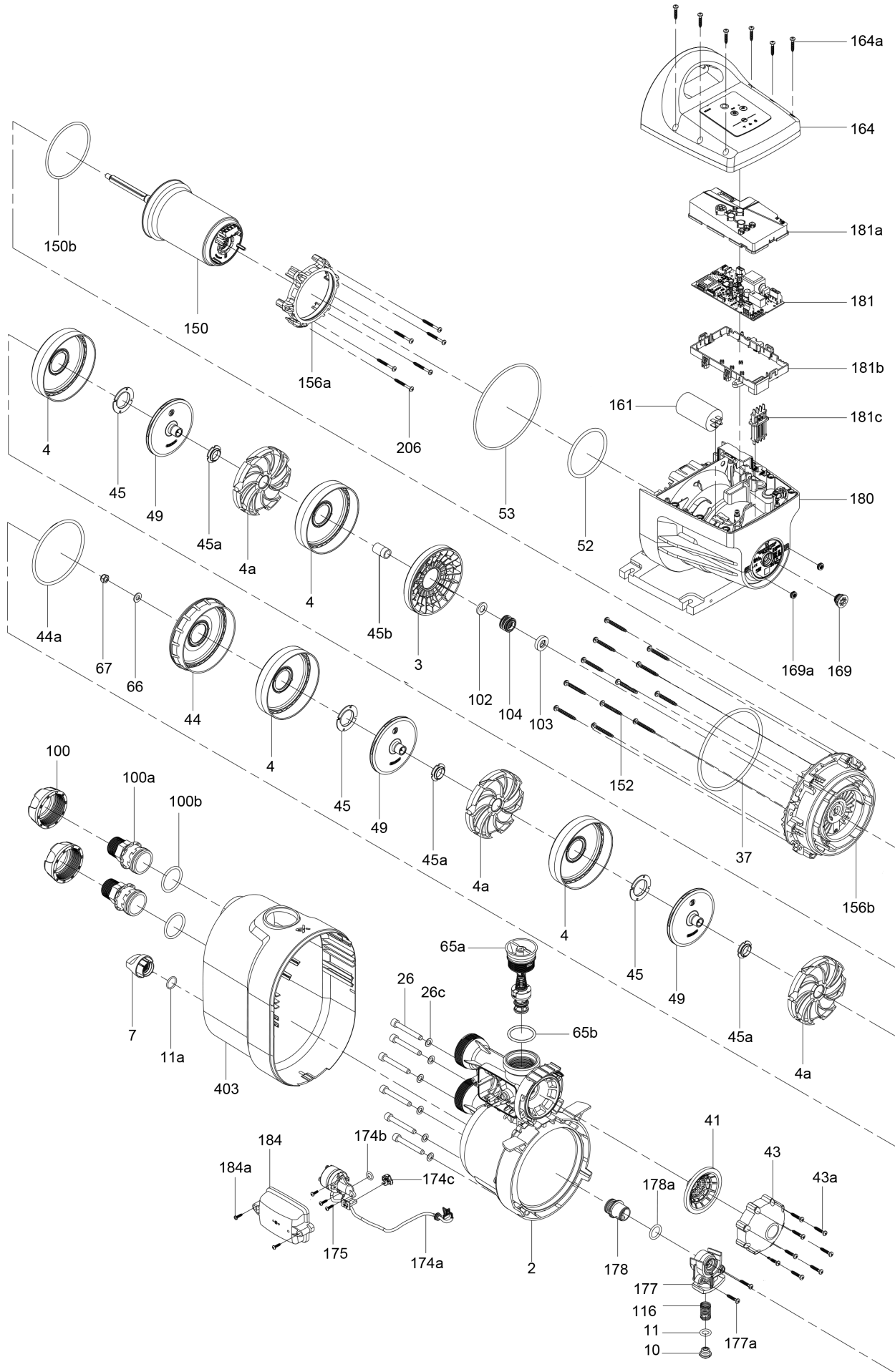


<http://net.grundfos.com/qr/i/99735528>

QR99735528

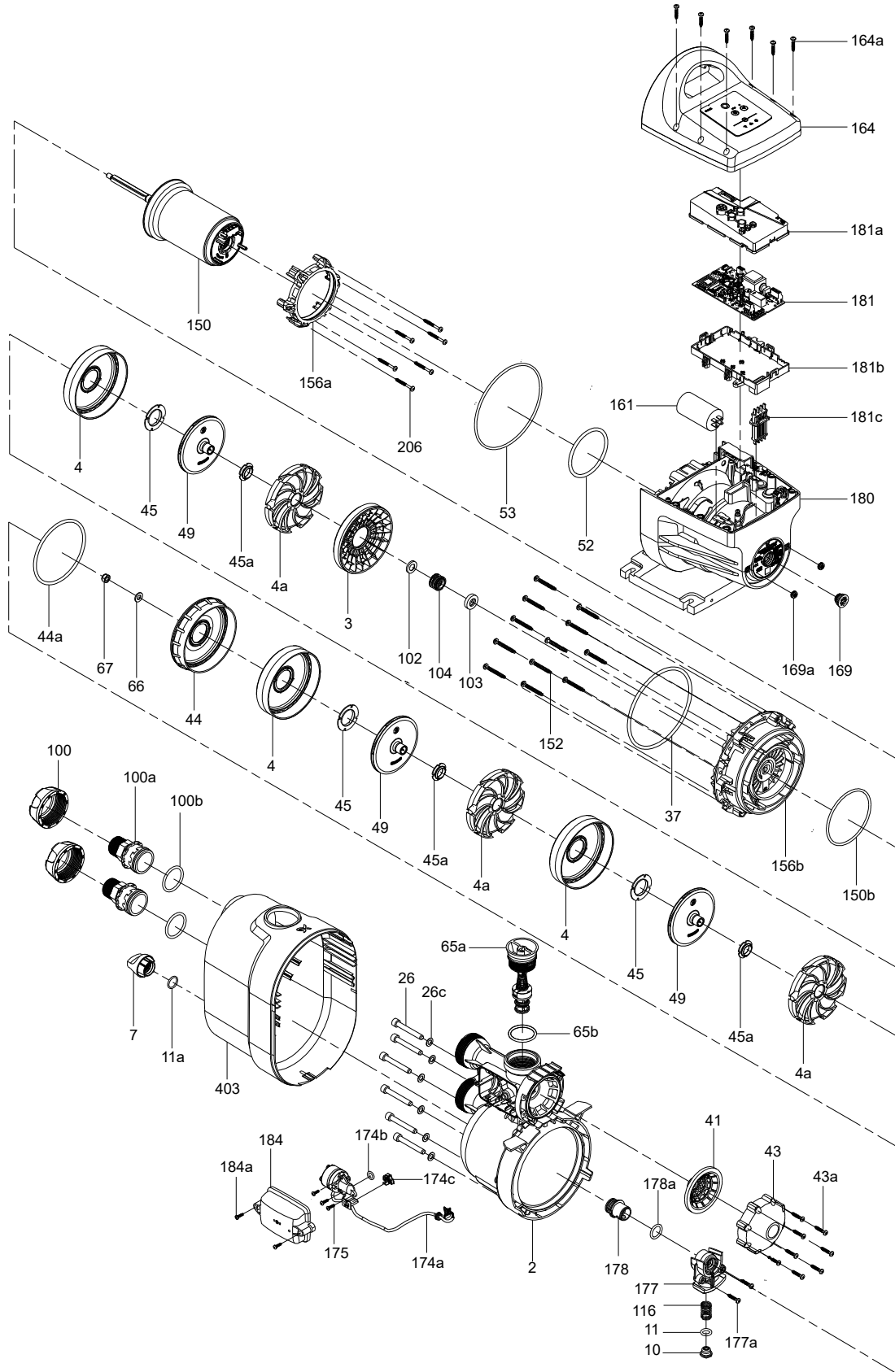


### 6.6 SCALA1 exploded view



SCALA1 3-25, 5-25 exploded view

TN075873



SCALA1 3-35, 3-45, 5-55 exploded view

**Argentina**

Bombas GRUNDFOS de Argentina S.A.  
Ruta Panamericana km. 37.500 Centro  
Industrial Garin  
1619 - Garin Pcia. de B.A.  
Tel.: +54-3327 414 444  
Fax: +54-3327 45 3190

**Australia**

GRUNDFOS Pumps Pty. Ltd.  
P.O. Box 2040  
Regency Park  
South Australia 5942  
Tel.: +61-8-8461-4611  
Fax: +61-8-8340-0155

**Austria**

GRUNDFOS Pumpen Vertrieb Ges.m.b.H.  
Grundfosstraße 2  
A-5082 Grödig/Salzburg  
Tel.: +43-6246-883-0  
Fax: +43-6246-883-30

**Belgium**

N.V. GRUNDFOS Bellux S.A.  
Boomsesteenweg 81-83  
B-2630 Aartselaar  
Tel.: +32-3-870 7300  
Fax: +32-3-870 7301

**Belarus**

Представительство ГРУНДФОС в Минске  
220125, Минск  
ул. Шафарнянская, 11, оф. 56, БЦ «Порт»  
Тел.: +375 17 397 397 3  
+375 17 397 397 4  
Факс: +375 17 397 397 1  
E-mail: minsk@grundfos.com

**Bosnia and Herzegovina**

GRUNDFOS Sarajevo  
Zmaja od Bosne 7-7A  
BiH-71000 Sarajevo  
Tel.: +387 33 592 480  
Fax: +387 33 590 465  
www.ba.grundfos.com  
E-mail: grundfos@bih.net.ba

**Brazil**

BOMBAS GRUNDFOS DO BRASIL  
Av. Humberto de Alencar Castelo Branco,  
630  
CEP 09850 - 300  
São Bernardo do Campo - SP  
Tel.: +55-11 4393 5533  
Fax: +55-11 4343 5015

**Bulgaria**

Grundfos Bulgaria EOOD  
Slatina District  
Iztochna Tangenta street no. 100  
BG - 1592 Sofia  
Tel.: +359 2 49 22 200  
Fax: +359 2 49 22 201  
E-mail: bulgaria@grundfos.bg

**Canada**

GRUNDFOS Canada Inc.  
2941 Brighton Road  
Oakville, Ontario  
L6H 6C9  
Tel.: +1-905 829 9533  
Fax: +1-905 829 9512

**China**

GRUNDFOS Pumps (Shanghai) Co. Ltd.  
10F The Hub, No. 33 Suhong Road  
Minhang District  
Shanghai 201106 PRC  
Tel.: +86 21 612 252 22  
Fax: +86 21 612 253 33

**Colombia**

GRUNDFOS Colombia S.A.S.  
Km 1.5 via Siberia-Cota Conj. Potrero  
Chico,  
Parque Empresarial Arcos de Cota Bod. 1A.  
Cota, Cundinamarca  
Tel.: +57(1)-2913444  
Fax: +57(1)-8764586

**Croatia**

GRUNDFOS CROATIA d.o.o.  
Buzinski prilaz 38, Buzin  
HR-10010 Zagreb  
Tel.: +385 1 6595 400  
Fax: +385 1 6595 499  
www.hr.grundfos.com

**Czech Republic**

GRUNDFOS Sales Czechia and Slovakia  
s.r.o.  
Čajkovského 21  
779 00 Olomouc  
Tel.: +420-585-716 111

**Denmark**

GRUNDFOS DK A/S  
Martin Bachs Vej 3  
DK-8850 Bjerringbro  
Tel.: +45-87 50 50 50  
Fax: +45-87 50 51 51  
E-mail: info\_GDK@grundfos.com  
www.grundfos.com/DK

**Estonia**

GRUNDFOS Pumps Eesti OÜ  
Peterburi tee 92G  
11415 Tallinn  
Tel.: + 372 606 1690  
Fax: + 372 606 1691

**Finland**

OY GRUNDFOS Pumput AB  
Trukkikuja 1  
FI-01360 Vantaa  
Tel.: +358-(0) 207 889 500

**France**

Pompes GRUNDFOS Distribution S.A.  
Parc d'Activités de Chesnes  
57, rue de Malacombe  
F-38290 St. Quentin Fallavier (Lyon)  
Tel.: +33-4 74 82 15 15  
Fax: +33-4 74 94 10 51

**Germany**

GRUNDFOS GMBH  
Schlüterstr. 33  
40699 Erkrath  
Tel.: +49-(0) 211 929 69-0  
Fax: +49-(0) 211 929 69-3799  
E-mail: infoservice@grundfos.de  
Service in Deutschland:  
kundendienst@grundfos.de

**Greece**

GRUNDFOS Hellas A.E.B.E.  
20th km. Athinon-Markopoulou Av.  
P.O. Box 71  
GR-19002 Peania  
Tel.: +0030-210-66 83 400  
Fax: +0030-210-66 46 273

**Hong Kong**

GRUNDFOS Pumps (Hong Kong) Ltd.  
Unit 1, Ground floor, Siu Wai Industrial  
Centre  
29-33 Wing Hong Street & 68 King Lam  
Street, Cheung Sha Wan  
Kowloon  
Tel.: +852-27861706 / 27861741  
Fax: +852-27858664

**Hungary**

GRUNDFOS Hungária Kft.  
Tópark u. 8  
H-2045 Törökbálint  
Tel.: +36-23 511 110  
Fax: +36-23 511 111

**India**

GRUNDFOS Pumps India Private Limited  
118 Old Mahabalipuram Road  
Thoraiakkam  
Chennai 600 097  
Tel.: +91-44 2496 6800

**Indonesia**

PT GRUNDFOS Pompa  
Graha Intirub Lt. 2 & 3  
Jin. Cililitan Besar No.454. Makasar,  
Jakarta Timur  
ID-Jakarta 13650  
Tel.: +62 21-469-51900  
Fax: +62 21-460 6910 / 460 6901

**Ireland**

GRUNDFOS (Ireland) Ltd.  
Unit A, Merrywell Business Park  
Ballymount Road Lower  
Dublin 12  
Tel.: +353-1-4089 800  
Fax: +353-1-4089 830

**Italy**

GRUNDFOS Pompe Italia S.r.l.  
Via Gran Sasso 4  
I-20060 Truccazzano (Milano)  
Tel.: +39-02-95838112  
Fax: +39-02-95309290 / 95838461

**Japan**

GRUNDFOS Pumps K.K.  
1-2-3, Shin-Miyakoda, Kita-ku  
Hamamatsu  
431-2103 Japan  
Tel.: +81 53 428 4760  
Fax: +81 53 428 5005

**Korea**

GRUNDFOS Pumps Korea Ltd.  
6th Floor, Aju Building 679-5  
Yeoksam-dong, Kangnam-ku, 135-916  
Seoul, Korea  
Tel.: +82-2-5317 600  
Fax: +82-2-5633 725

**Latvia**

SIA GRUNDFOS Pumps Latvia  
Deglava biznesa centrs  
Augusta Deglava ielā 60  
LV-1035, Rīga,  
Tel.: + 371 714 9640, 7 149 641  
Fax: + 371 914 9646

**Lithuania**

GRUNDFOS Pumps UAB  
Smolensko g. 6  
LT-03201 Vilnius  
Tel.: + 370 52 395 430  
Fax: + 370 52 395 431

**Malaysia**

GRUNDFOS Pumps Sdn. Bhd.  
7 Jalan Peguam U1/25  
Glenmarie Industrial Park  
40150 Shah Alam, Selangor  
Tel.: +60-3-5569 2922  
Fax: +60-3-5569 2866

**Mexico**

Bombas GRUNDFOS de México  
S.A. de C.V.  
Boulevard TLC No. 15  
Parque Industrial Stiva Aeropuerto  
Apodaca, N.L. 66600  
Tel.: +52-81-8144 4000  
Fax: +52-81-8144 4010

**Netherlands**

GRUNDFOS Netherlands  
Veluwezoom 35  
1326 AE Almere  
Postbus 22015  
1302 CA ALMERE  
Tel.: +31-88-478 6336  
Fax: +31-88-478 6332  
E-mail: info\_gnl@grundfos.com

**New Zealand**

GRUNDFOS Pumps NZ Ltd.  
17 Beatrice Tinsley Crescent  
North Harbour Industrial Estate  
Albany, Auckland  
Tel.: +64-9-415 3240  
Fax: +64-9-415 3250

**Norway**

GRUNDFOS Pumper A/S  
Stramsveien 344  
Postboks 235, Leirdal  
N-1011 Oslo  
Tel.: +47-22 90 47 00  
Fax: +47-22 32 21 50

**Poland**

GRUNDFOS Pompy Sp. z o.o.  
ul. Klonowa 23  
Baranowo k. Poznania  
PL-62-081 Przemierowo  
Tel.: (+48-61) 650 13 00  
Fax: (+48-61) 650 13 50

**Portugal**

Bombas GRUNDFOS Portugal, S.A.  
Rua Calvet de Magalhães, 241  
Apartado 1079  
P-2770-153 Paço de Arcos  
Tel.: +351-21-440 76 00  
Fax: +351-21-440 76 90

**Romania**

GRUNDFOS Pompe România SRL  
S-PARK BUSINESS CENTER, Clădirea  
A2, etaj 2  
Str. Tipografilor, Nr. 11-15, Sector 1, Cod  
013714  
Bucuresti, Romania  
Tel.: 004 021 2004 100  
E-mail: romania@grundfos.ro

**Russia**

ООО Грундфос Россия  
ул. Школьная, 39-41  
Москва, RU-109544, Russia  
Тел. (+7) 495 564-88-00 (495) 737-30-00  
Факс (+7) 495 564 8811  
E-mail grundfos.moscow@grundfos.com

**Serbia**

Grundfos Srbija d.o.o.  
Omladinskih brigada 90b  
11070 Novi Beograd  
Tel.: +381 11 2258 740  
Fax: +381 11 2281 769  
www.rs.grundfos.com

**Singapore**

GRUNDFOS (Singapore) Pte. Ltd.  
25 Jalan Tukang  
Singapore 619264  
Tel.: +65-6681 9688  
Fax: +65-6681 9689

**Slovakia**

GRUNDFOS s.r.o.  
Prievozská 4D 821 09 BRATISLAVA  
Tel.: +421 2 5020 1426  
sk.grundfos.com

**Slovenia**

GRUNDFOS LJUBLJANA, d.o.o.  
Leskoškova 9e, 1122 Ljubljana  
Tel.: +386 (0) 1 568 06 10  
Fax: +386 (0) 1 568 06 19  
E-mail: tehnika-si@grundfos.com

**South Africa**

GRUNDFOS (PTY) LTD  
16 Lascelles Drive, Meadowbrook Estate  
1609 Germiston, Johannesburg  
Tel.: (+27) 10 248 6000  
Fax: (+27) 10 248 6002  
E-mail: lgradidge@grundfos.com

**Spain**

Bombas GRUNDFOS España S.A.  
Camino de la Fuenteclilla, s/n  
E-28110 Algete (Madrid)  
Tel.: +34-91-848 8800  
Fax: +34-91-628 0465

**Sweden**

GRUNDFOS AB  
Bruggacherstrasse 10  
431 24 Mölndal  
Tel.: +46 31 332 23 000  
Fax: +46 31 331 94 60

**Switzerland**

GRUNDFOS Pumpen AG  
Bruggacherstrasse 10  
CH-8117 Fällanden/ZH  
Tel.: +41-44-806 8111  
Fax: +41-44-806 8115

**Taiwan**

GRUNDFOS Pumps (Taiwan) Ltd.  
7 Floor, 219 Min-Chuan Road  
Taichung, Taiwan, R.O.C.  
Tel.: +886-4-2305 0868  
Fax: +886-4-2305 0878

**Thailand**

GRUNDFOS (Thailand) Ltd.  
92 Chaloeam Phrakiat Rama 9 Road  
Dokmai, Pravej, Bangkok 10250  
Tel.: +66-2-725 8999  
Fax: +66-2-725 8998

**Turkey**

GRUNDFOS POMPA San. ve Tic. Ltd. Sti.  
Gebze Organize Sanayi Bölgesi  
Ihsan dede Caddesi  
2. yol 200. Sokak No. 204  
41490 Gebze/ Kocaeli  
Tel.: +90 - 262-679 7979  
Fax: +90 - 262-679 7905  
E-mail: satis@grundfos.com

**Ukraine**

Бізнес Центр Європа  
Столицне шосе, 103  
м. Київ, 03131, Україна  
Tel.: (+38 044) 237 04 00  
Fax: (+38 044) 237 04 01  
E-mail: ukraine@grundfos.com

**United Arab Emirates**

GRUNDFOS Gulf Distribution  
P.O. Box 16768  
Jebel Ali Free Zone, Dubai  
Tel.: +971 4 8815 166  
Fax: +971 4 8815 136

**United Kingdom**

GRUNDFOS Pumps Ltd.  
Grovebury Road  
Leighton Buzzard/Beds. LU7 4TL  
Tel.: +44-1525-850000  
Fax: +44-1525-850011

**U.S.A.**

GRUNDFOS Pumps Corporation  
9300 Loiret Boulevard  
Lenexa, Kansas 66219 USA  
Tel.: +1 913 227 3400  
Fax: +1 913 227 3500

**Uzbekistan**

Grundfos Tashkent, Uzbekistan  
The Representative Office of Grundfos  
Kazakhstan in Uzbekistan  
38a, Oybek street, Tashkent  
Tel.: (+998) 71 150 3290 / 71 150 3291  
Fax: (+998) 71 150 3292

**Revision Info**

Last revised on 09-09-2020

<b>99830441</b> 10.2020
ECM: 1298119

Trademarks displayed in this material, including but not limited to Grundfos, the Grundfos logo and "be think innovate" are registered trademarks owned by The Grundfos Group. All rights reserved. © 2020 Grundfos Holding A/S, all rights reserved.

