

18" SITKA

STAINLESS STEEL PREP SINK
SKU: 948451, 948452



FEATURES

- Minimum Cabinet Size: 21".
- Type 304 stainless steel.
- It is recommended to have the sink at the job site before cutting cabinet or counter top.
- Sound absorption pads on the underside of sink.
- Has an undercoating to prevent condensation buildup.

SIGNATURE HARDWARE Lifetime Warranty

See website for detailed warranty information.

CONTENTS

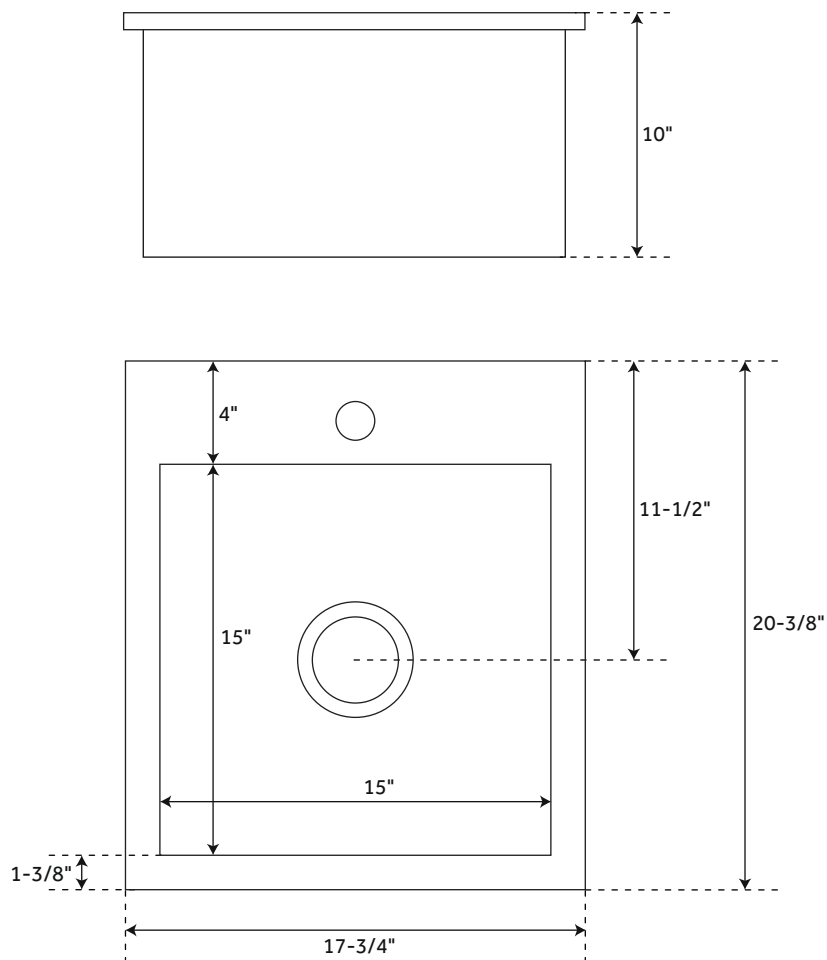
18" SINK	PAGE 2
SINK GRID	PAGE 3

REVISED 01/22/2020
CODE: SHSKDM1515Z1/SHG1515

18" SITKA

STAINLESS STEEL PREP SINK

SKU: 948451, 948452



FEATURES

Sink Installation: Undermount, Drop-In
Faucet Centers: Single-Hole Centered
Number of Basins: 1
Product Color: Stainless Steel
Length: 17-3/4"
Width: 20-3/8"
Height: 10"
Basin Length: 15"
Basin Width: 15"
Water Depth to Rim: 10"
Metal Gauge/Thickness: 16
Faucet Included: No
Faucet Holes: 1
Drain Included: Optional
Drain Size: 3-1/2"
Mounting Hardware Included: Yes

CODES/STANDARDS

cUPC
ASME A112.19.3/CSA B45.4



SIGNATURE HARDWARE LIFETIME WARRANTY

See website for warranty information



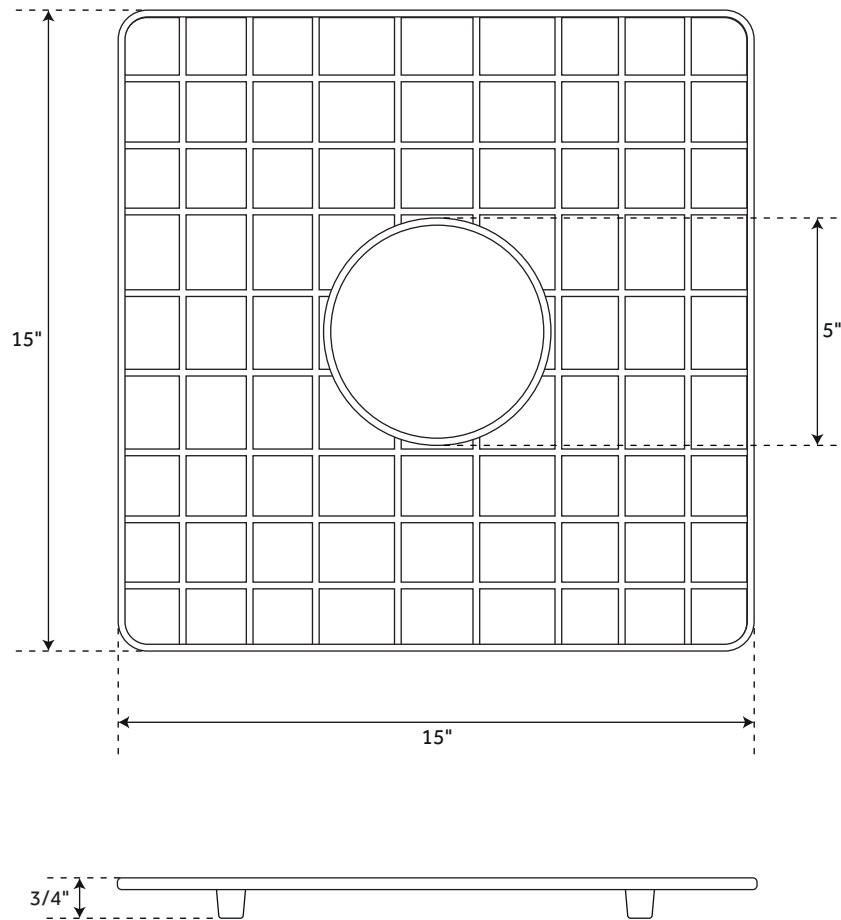
All dimensions and specifications are nominal and may vary. Use actual products for accuracy in critical situations.

Page 2

SINK GRID

FOR 18" SITKA STAINLESS STEEL PREP SINK

SKU: 948451, 948452

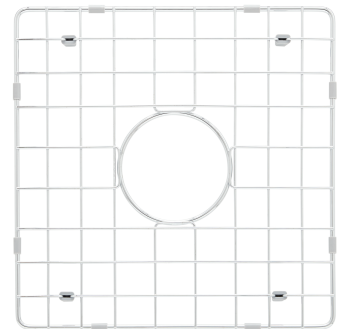


FEATURES

Material: Stainless Steel
Length: 15"
Width: 15"
Height: 3/4"
Drain Size: 5"

SIGNATURE HARDWARE LIFETIME WARRANTY

See website for warranty information



All dimensions and specifications are nominal and may vary. Use actual products for accuracy in critical situations.