

EFFECTIVE:
17-AUG-12

HORIZONTAL MOTORS

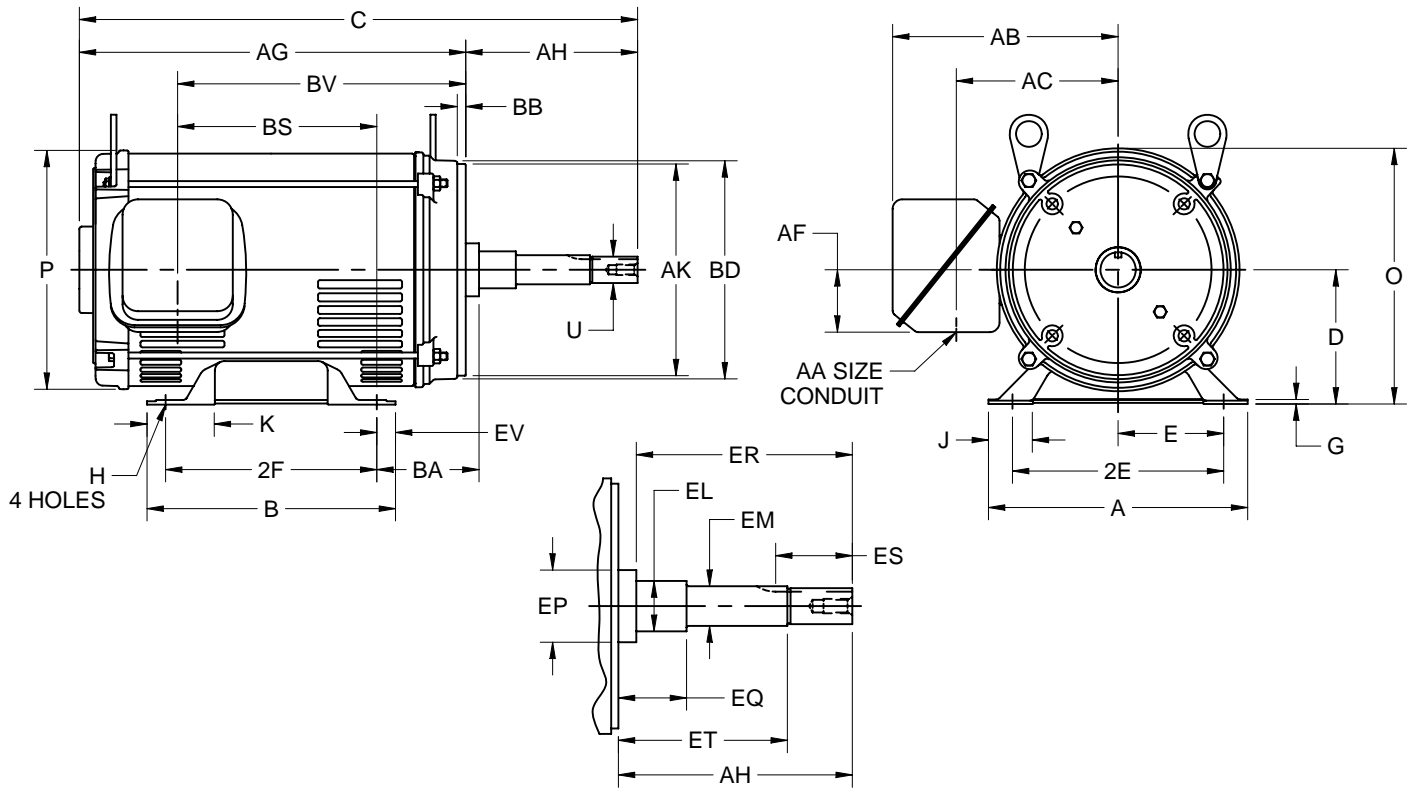
ODP-CLOSED COUPLED PUMP WITH OVER SIZED O/B

FRAME: 210JP
BASIC TYPE: D1

PRINT:
07-2013-02

SUPERSEDES:
NEW

SHEET:
1 OF 1



ALL DIMENSIONS ARE IN INCHES AND MILLIMETERS

UNITS	A	D -.06	E	2E ±.03	G	H +.05	J	K	O	P ²	T	U -.0005
IN	9.50	5.25	4.25	8.50	.19	.39	1.13	1.00	10.00	9.44	1.29	1.2495
MM	241	133	108	216	5	10	29	25	254	240	33	31.737

UNITS	AA	AB	AC	AF	AH ±.031	AJ	AK -.003	BA	BB ±.031	BD MAX	BF ³	EL -.002
IN	1.00	8.84	7.25	2.63	8.125	7.250	8.500	4.25	.281	9.00	1/2-13 X .75	1.750
MM		225	184	67	206.38	184.14	215.90	108	7.14	229		44.45

UNITS	EM -.0005	EN ³	EP MIN	EQ ±.015	ER MIN	ES MIN	ET ±.015	EV	SQ KEY
IN	1.3750	1/2-13 X 1.00	1.75	2.375	8.13	2.53	5.875	.50	.250
MM	34.925		44	60.33	207	64	149.23	13	6.35

FRAME	UNITS	B	C	2F ±.03	AG	BS	BV
213JP	IN	6.50	21.63	5.50	13.50	6.66	11.06
	MM	165	549	140	343	169	281
215JP	IN	8.00	23.13	7.00	15.00	8.13	12.56
	MM	203	588	178	381	207	319

- 1: ALL ROUGH DIMENSIONS MAY VARY BY .25" DUE TO CASTING AND/OR FABRICATION VARIATIONS.
- 2: LARGEST MOTOR WIDTH.
- 3: TAP SIZE AND BOLT PENETRATION ALLOWANCE.
- 4: ALL TAPPED HOLES ARE UNIFIED NATIONAL COARSE, RIGHT HAND THREAD.
- 5: CONDUIT BOX MAY BE LOCATED ON EITHER SIDE AND CONDUIT OPENING MAY BE LOCATED IN STEPS OF 90 DEGREES REGARDLESS OF LOCATION. STANDARD AS SHOWN WITH CONDUIT OPENING DOWN.
- 6: TOLERANCES SHOWN ARE IN INCHES ONLY.
- 7: FRAME REFERENCE: 10.531/213 AND 12.031/215

TOLERANCES	
FACE RUNOUT	.004 T.I.R.
PERMISSIBLE ECCENTRICITY OF MOUNTING RABBET	.004 T.I.R.
PERMISSIBLE SHAFT RUNOUT	.002 T.I.R.

07-2013/E

Nidec Motor Corporation
St. Louis, Missouri

INFORMATION DISCLOSED ON THIS DOCUMENT IS CONSIDERED PROPRIETARY AND SHALL NOT BE REPRODUCED OR DISCLOSED WITHOUT WRITTEN CONSENT OF NIDEC MOTOR CORPORATION



ISSUED BY
R. KING
APPROVED BY
J. O'BRIEN

IHP_DP_NMCA (MAR-2011) SOLIDEDGE