

VAR	MODEL	CATALOG NO.	A	BASE REQUIREMENT	ROTATION
001	C63ZZHLZ-5029	EC11B	12.596	STD N56	CCW DRIVE END REV.
002	C63CXHMB-5031	EC09B	12.096	STD N56	CCW DRIVE END REV.
003	C63ZZHMC-5032	EC11	12.596	NONE	CCW DRIVE END REV.
004	C63CXHMD-5033	EC09	12.096	NONE	CCW DRIVE END REV.
005	C63CXHMK-5039	EC06	11.846	NONE	CW DRIVE END REV.

SHEET NUMBER	REV	REVISION RECORD FOR: ECO E31424		
1 OF 2	F	CHANGED SCREW VIEW TO S05820750 (SCREW SITHOUT SLOT).		
REVISION DATE		10-JUL-18		
ISSUED BY	G. ISASSI	REVIEWED BY	J. SALINAS	ENGINEER APPROVED
		J.J. JUAREZ		

INFORMATION DISCLOSED ON THIS DOCUMENT IS CONSIDERED PROPRIETARY AND SHALL NOT BE REPRODUCED OR DISCLOSED WITHOUT WRITTEN CONSENT OF NIDEC MOTOR CORPORATION

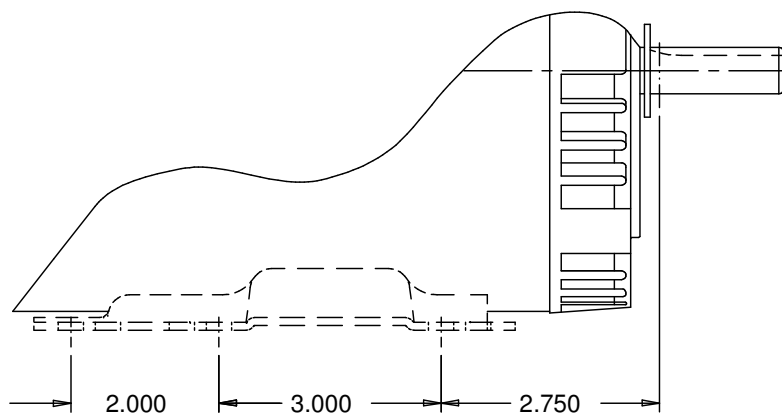
ALL DIMENSIONS ARE FOR REFERENCE ONLY UNLESS TOLERANCE IS GIVEN

TITLE: **ASSEMBLED VIEW**

**NIDEC MOTOR CORPORATION**

CODE: **V01** ITEM NO.: **745042** SIZE: **B**

VAR	MODEL	CATALOG NO.	A	BASE REQUIREMENT
006	C63CXHMN-5042	EC06B	11.846	STD N56
007	C63JXHMJ-5038	EC03	11.346	NONE
008	C63JXHMM-5041	EC03B	11.346	STD N56
009	C63CXHMW-5047	EC07B	11.346	STD N56
010	C63CXHNP-5065	EC07	11.346	NONE
011	C63JXHNB-5051	EC02	10.596	NONE
012	C63JXHNE-5054	EC02B	10.596	STD N56
013	C63CXHNC-5052	EC04	10.846	NONE
014	C63CXHNF-5055	EC04B	10.846	STD N56
015	C63ZZHND-5053	EC10	12.346	NONE
016	C63ZZHNG-5056	EC10B	12.346	STD N56
017	C63JXHMH-5037	EC01	11.346	NONE
018	C63JXHML-5040	EC01B	11.346	STD N56



PARTIAL VIEW  
SHOWING N56H BASE

SHEET NUMBER 2 OF 2	REV <b>F</b>	REVISION RECORD FOR: <b>ECO E31424</b>	
	REVISION DATE <b>10-JUL-18</b>	CHANGED SCREW VIEW TO S05820750 (SCREW SITHOUT SLOT), IN PAGE #1.	
ISSUED BY <b>G. ISASSI</b>	REVIEWED BY <b>J. SALINAS</b>	ENGINEER APPROVED <b>J.J. JUAREZ</b>	

INFORMATION DISCLOSED ON THIS DOCUMENT IS CONSIDERED PROPRIETARY AND SHALL NOT BE REPRODUCED OR DISCLOSED WITHOUT WRITTEN CONSENT OF NIDEC MOTOR CORPORATION

**NIDEC MOTOR CORPORATION**

ALL DIMENSIONS ARE FOR REFERENCE ONLY UNLESS TOLERANCE IS GIVEN

TITLE <b>ASSEMBLED VIEW</b>	CODE <b>V01</b>	ITEM NO. <b>745042</b>	SIZE <b>B</b>
--------------------------------	--------------------	---------------------------	------------------