

EFFECTIVE:
24-MAY-11

SUPERSEDES:
27-APR-10

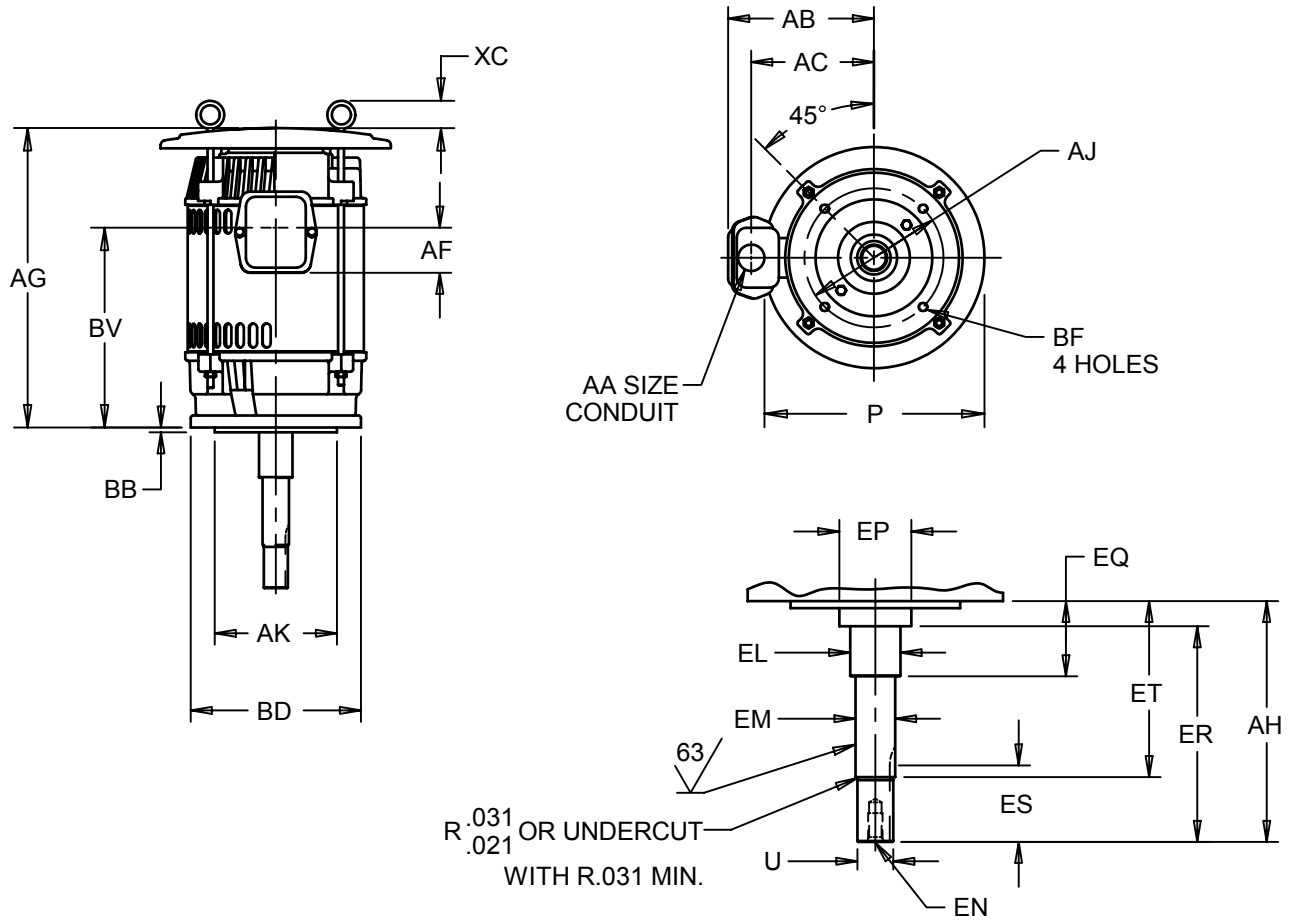
HORIZONTAL MOTORS

CLOSE-COUPLED PUMP - VERTICAL MOUNTING

FRAME: 320JPV
BASIC TYPE: DF-1, FDF-1

PRINT:
07-2194

SHEET:
1 OF 1



R.031
.021 OR UNDERCUT
WITH R.031 MIN.

ALL DIMENSIONS ARE IN INCHES AND MILLIMETERS

UNITS	P ⁵	U ⁶ -.0005	AA	AB	AC	AF	AG	AH ±.031	AJ	AK ⁶ -.005	BB MIN	BD MAX
IN	14.19	1.2495	2.00	12.69	9.31	3.25	30.71	8.125	11.00	12.500	.313	13.00
MM	360	31.737		322	237	83	780	206.38	279	317.50	7.95	330

UNITS	BF ^{2,3}	BV	EL ⁶ -.002	EM ⁶ -.0005	EN ^{2,3}	EP MIN	EQ ⁶ ±.015	ER MIN	ES MIN	ET ⁶ ±.020	XC	SQ KEY
IN	5/8-11 X .94	17.00	1.750	1.3750	1/2-13 X 1.00	2.13	2.375	8.13	2.53	5.875	2.50	.250
MM		432	44.45	34.925		54	60.33	207	64	149.23	64	6.35

1. ALL ROUGH DIMENSIONS MAY VARY BY .25" DUE TO CASTING AND/OR FABRICATION VARIATIONS.
2. TAP SIZE AND BOLT PENETRATION ALLOWANCE.
3. ALL TAPPED HOLES ARE UNIFIED NATIONAL COARSE, RIGHT HAND THREAD.
4. STANDARD ASSEMBLY POSITION F-1 IS SHOWN. F-2 IS PROVIDED WHEN SPECIFIED. CONDUIT OPENINGS MAY BE LOCATED IN STEPS OF 90° REGARDLESS OF LOCATION. STANDARD AS SHOWN WITH CONDUIT OPENING DOWN.
5. LARGEST MOTOR WIDTH.
- 6: TOLERANCES SHOWN ARE IN INCHES ONLY.

TOLERANCES	
FACE RUNOUT	.004 T.I.R.
PERMISSIBLE ECCENTRICITY OF MOUNTING RABBET	.004 T.I.R.
PERMISSIBLE SHAFT RUNOUT	.002 T.I.R.

07-2194/A

Nidec Motor Corporation
St. Louis, Missouri

INFORMATION DISCLOSED ON THIS DOCUMENT IS CONSIDERED PROPRIETARY AND SHALL NOT BE REPRODUCED OR DISCLOSED WITHOUT WRITTEN CONSENT OF NIDEC MOTOR CORPORATION



ISSUED BY
P. INGALE
APPROVED BY
R. KING

IHP_DP_NMCA (MAR-2011) SOLIDEDGE