

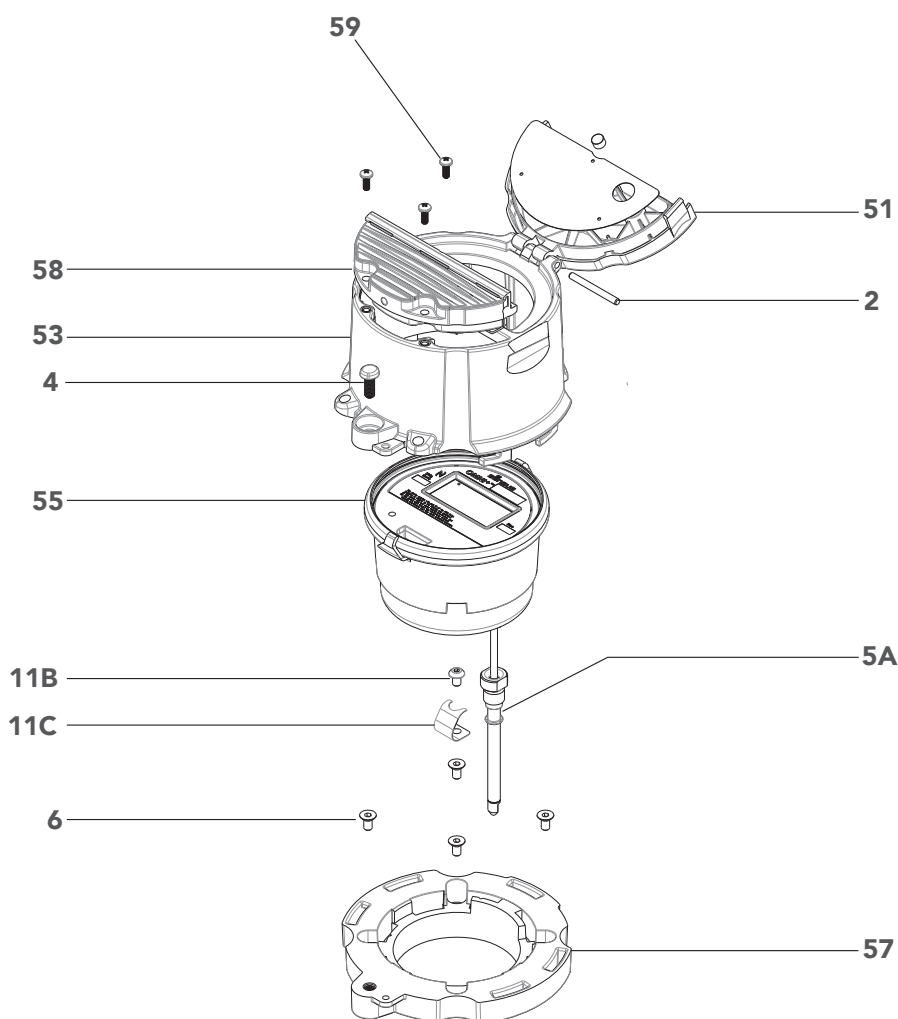


OMNI™ H² Fire Hydrant Meter

Parts List

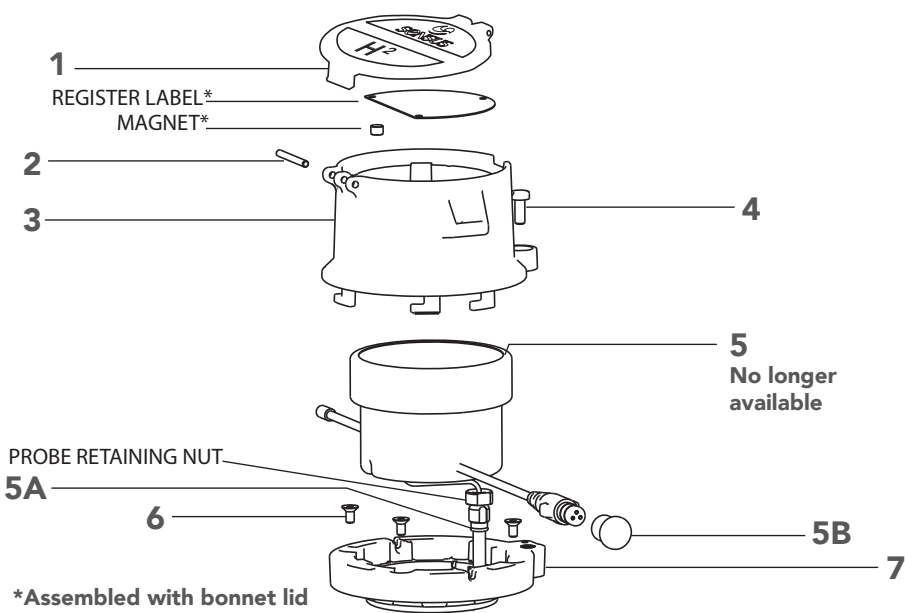
OMNI™+ ADVANCED EREGISTER

Illustration #	Name of Part
2	Hinge pin
4	Bonnet seal screw
5A	Register pick-up probe O-ring
6	Locking ring screw
11B	Screw, spring hold down
11C	Spring
51	H² OMNI+ bonnet lid
53	OMNI+ bonnet
55	OMNI+ register
57	OMNI+ locking ring
58	OMNI+ optical adapter
59	OMNI+ optical adapter screw



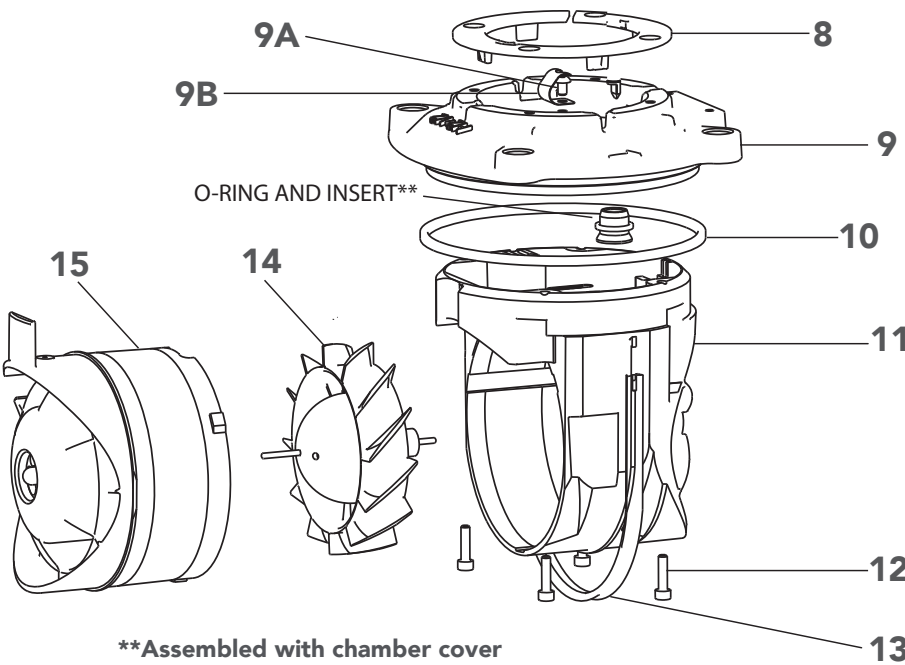
OMNI H² Fire Hydrant Meter

Parts List



ORIGINAL OMNI REGISTER

Illustration #	Name of Part
1	H ² OMNI bonnet lid
2	Hinge pin
3	Bonnet
4	Bonnet seal screw
5A	Register pick-up probe O-ring
6	Locking ring screw
7	Locking ring

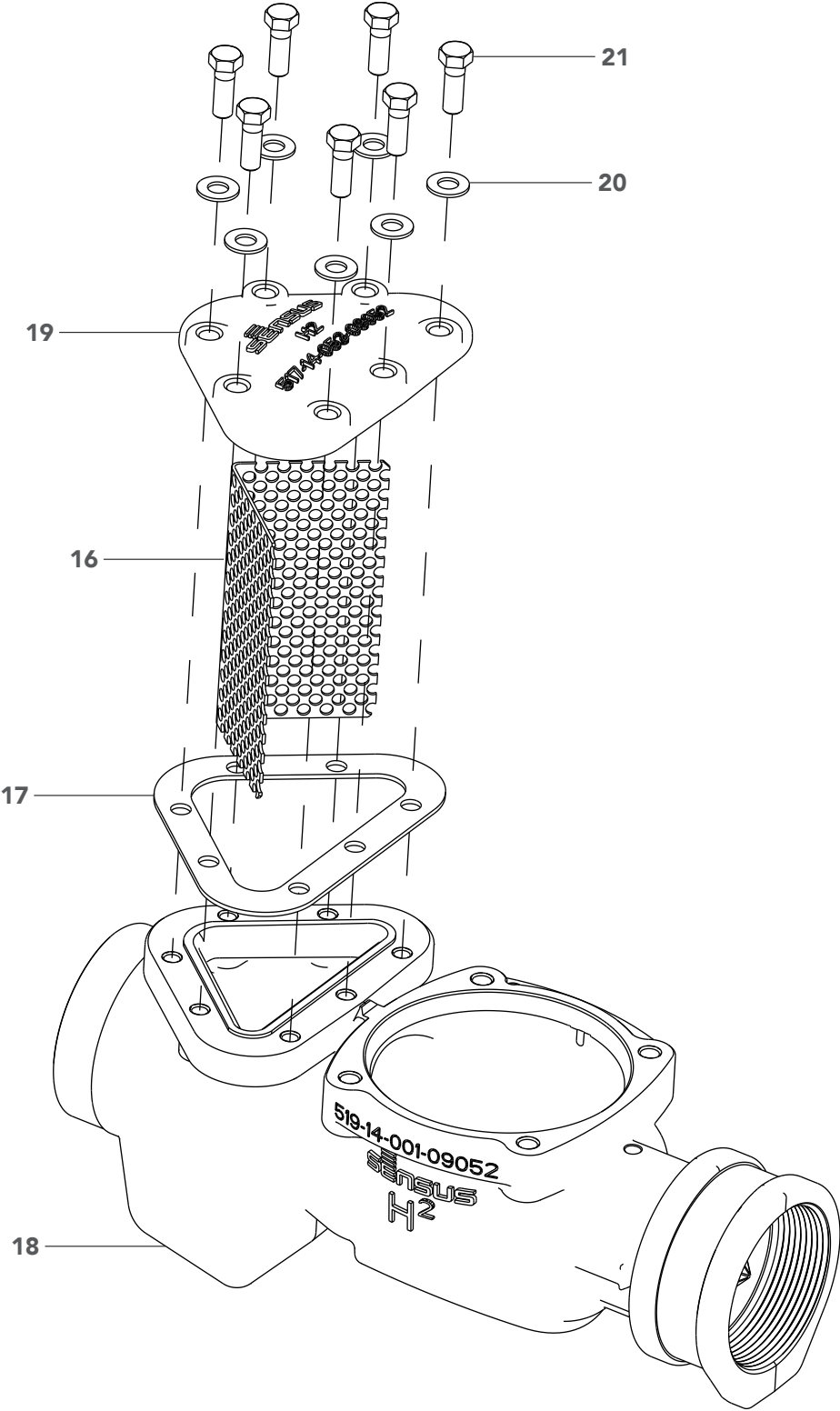


CHAMBER ASSEMBLY

Illustration #	Name of Part
8	Fixing ring
9	Chamber cover bolt
9A	Screw, spring hold down
9B	Spring
10	Chamber cover O-ring or gasket
11	Measuring insert with Brg and Thrust assy
12	Measuring insert screw
13	Chamber seal gasket
14	H ² rotor and shaft assy
15	OMNI H ² balance plate with Brg and Thrust assy

OMNI H² Fire Hydrant Meter

Parts List



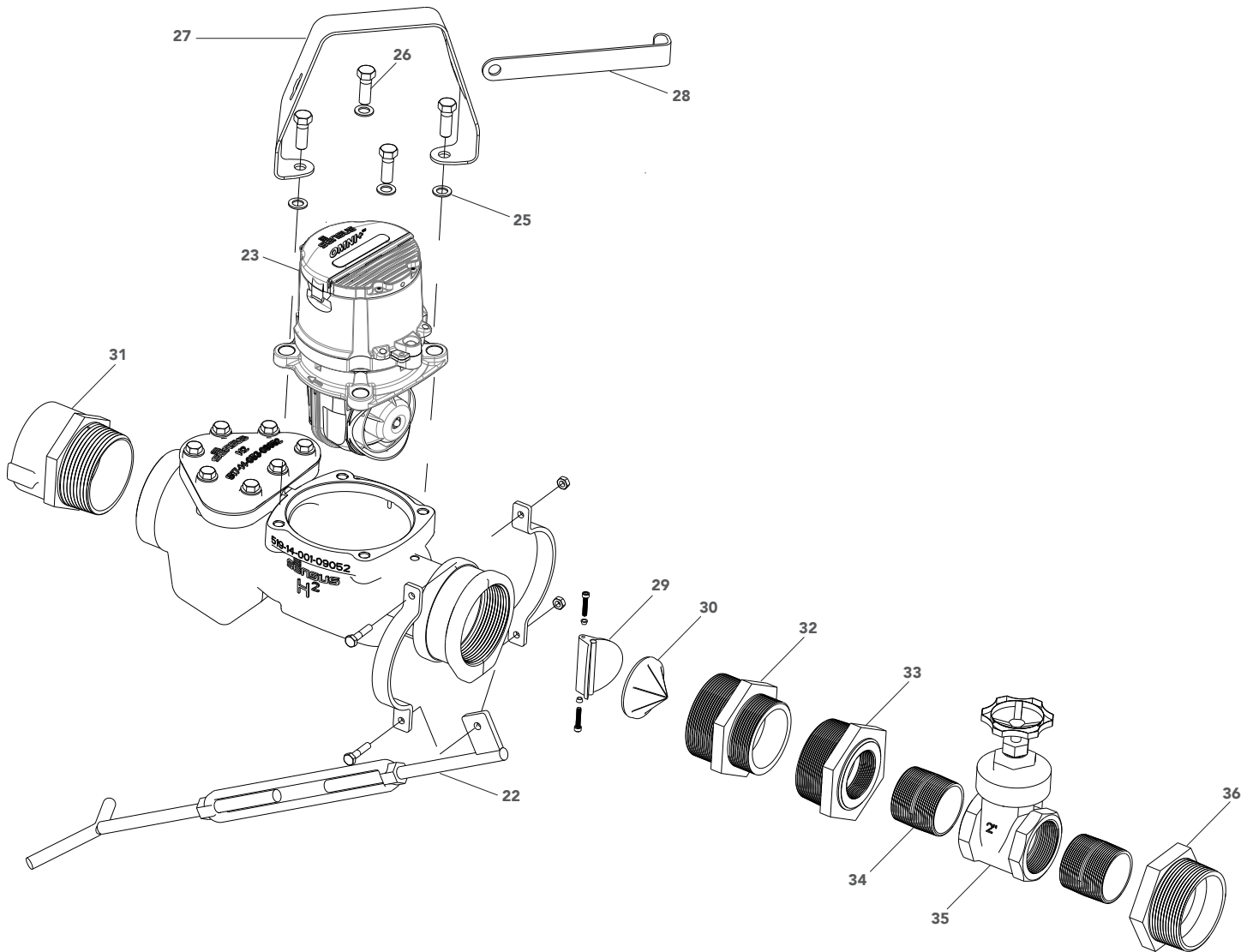
MEASURING CHAMBER AND STRAINER PARTS

Illustration #	Name of Part
16	Strainer screen
17	Strainer cover gasket
18	Meter body
18A	Meter body for Techno-check valve (not shown)
19	Strainer cover
20	SS washer, 3/8" bolt
21	3/8"-16 x 1.125 HH bolt
22	Meter support (option)
23	Measuring chamber assembly
25	SS washer, 7/16"
26	7/16"-14 x 1.25 HH bolt
27	Handle
28	Handle lock bar
29	Techno-check valve (option)
30	Variable orifice
31	Coupling swivel 3" NPT male x fire hose thread male ¹
32	Hex reducer 3" NPT male x 2.5" NPT female (option) ^{1, 2}
33	Hex reducer 3" NPT male x 2" NPT female (option) ³
34	2" NPT close nipple (option) ³
35	2" gate valve (option) ³
36	Hex reducer 2.5" NPT male x 2" NPT female (option)

1 Fire hose threads are 2-1/2" to 7-1/2" NS threads unless otherwise specified.
2 See thread chart on Configurator for your required thread.
3 Parts of gate valve assembly.

OMNI H² Fire Hydrant Meter

Parts List



Xylem.com | Sensus.com

SENSUS | 637 Davis Drive | Morrisville, NC 27560 | 800.638.3748

©2021 Sensus. All products purchased and services performed are subject to Sensus' terms of sale, available at either sensus.com/TC or 1-800-638-3748. Sensus reserves the right to modify these terms and conditions in its own discretion without notice to the customer. The Sensus logo is a registered trademark of Sensus.

This document is for informational purposes only, and SENSUS MAKES NO EXPRESS WARRANTIES IN THIS DOCUMENT. FURTHERMORE, THERE ARE NO IMPLIED WARRANTIES, INCLUDING WITHOUT LIMITATION, WARRANTIES AS TO FITNESS FOR A PARTICULAR PURPOSE AND MERCHANTABILITY. ANY USE OF THE PRODUCTS THAT IS NOT SPECIFICALLY PERMITTED HEREIN IS PROHIBITED.