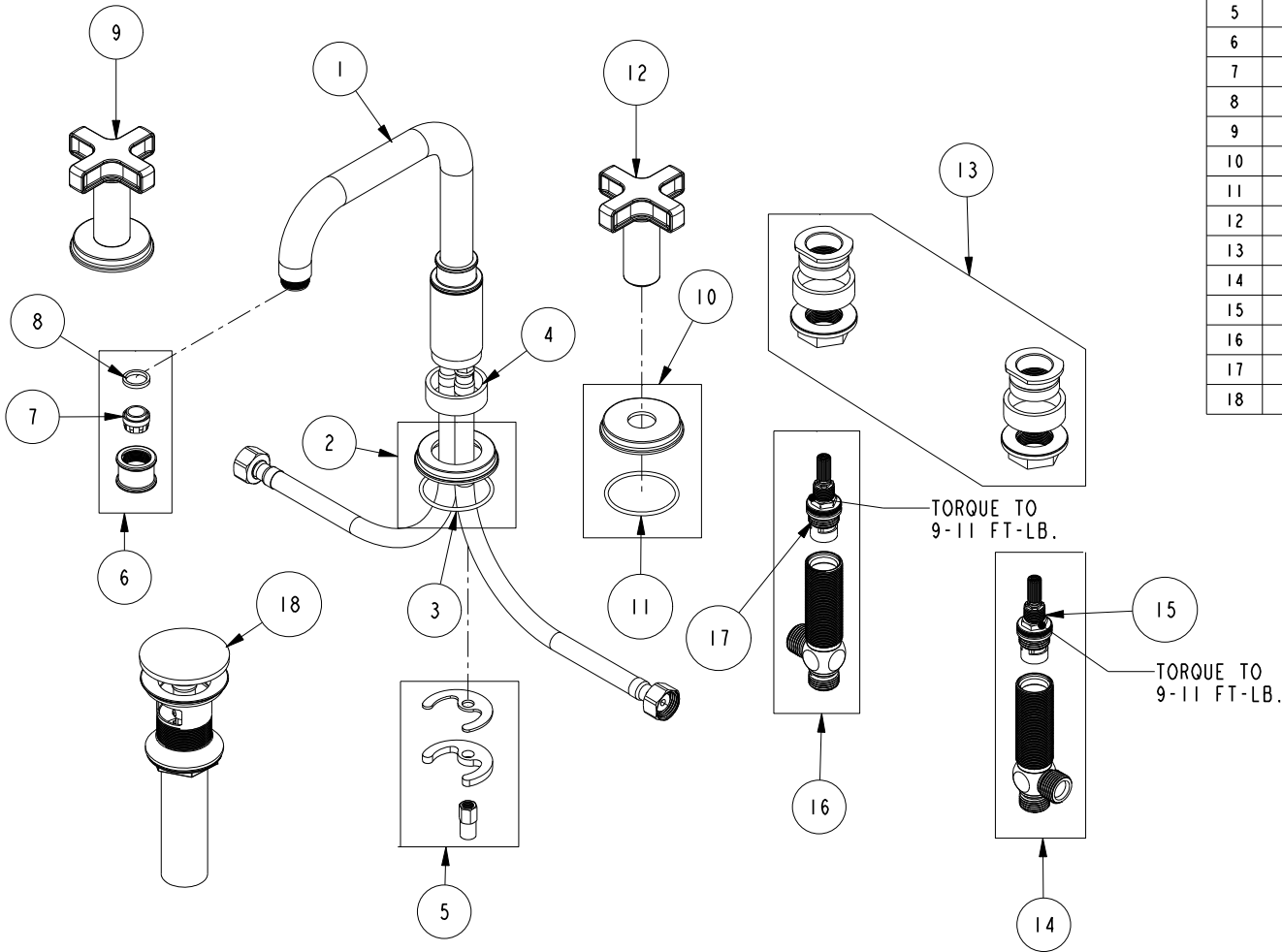


# REPLACEMENT PARTS

ITEM	PT/ASSY	SPECIFY FINISH	DESCRIPTION
1	3-634	YES	W/S SPOUT ASM
2	20-735	YES	ESCUTCHEON ASM
3	91773		O-RING, #2-133, 50 DURO
4	10382		QUICK CONNECT SPACER
5	1-491		SPOUT MOUNTING KIT
6	20-442	YES	AERATOR ASM
7	12403		AERATOR INSERT, Jr. SIZE, 1.2 GPM
8	91500		GSKT, .578 ID X .728 OD X .102 THK EPDM
9	3-649	YES	CROSS HANDLE W/ESC.
10	20-433	YES	ESCUTCHEON ASM
11	91773		O-RING, #2-133, 50 DURO
12	20-430	YES	CROSS HANDLE ASM
13	1-226		WIDESPREAD MOUNTING HARDWARE
14	1-527		W/S CART/BODY ASM (HOT)
15	1-002		W/S CARTRIDGE - HOT
16	1-526		W/S CART/BODY ASM (COLD)
17	1-001		W/S CARTRIDGE - COLD
18	330	YES	DRAIN, PUSH DOWN, W/ OVERFLOW



**WIDESPREAD FAUCET  
3280**

REV D EN-4728 11/06/23 APPROVED RS

**NEWPORT BRASS.**

t: 949.417.5207 | www.newportbrass.com