

# SILTSACK®

## SEDIMENT CAPTURE DEVICE

INLET PROTECTION

### PROTECTS CATCH BASINS FROM CONSTRUCTION RUNOFF

Siltsack® is a temporary catch basin filter that removes sediment, trash and debris from entering a catch basin. Available in both high flow and regular flow, Siltsack can be manufactured with built-in curb deflectors and overflow holes.

Routine inspection of Siltsack's collected sediment level is important to prevent ponding around catch basins.

#### FEATURES:

- Two dump straps attached at the bottom to facilitate emptying
- Lifting loops to remove sack from basin
- Restraint cord to keep sides away from basin walls
- Multiple types of Siltsack available
  - **Type A:** Original Siltsack
  - **Type B:** Siltsack with curb deflector
  - **Type C:** Siltsack with adjustable frame



#### ADVANTAGES:

- Made to fit any size inlet
- Easy to install and economical
- US patented
- Custom sizes available
- Undergrate design so it is not easily disturbed
- Type C has adjustable frame

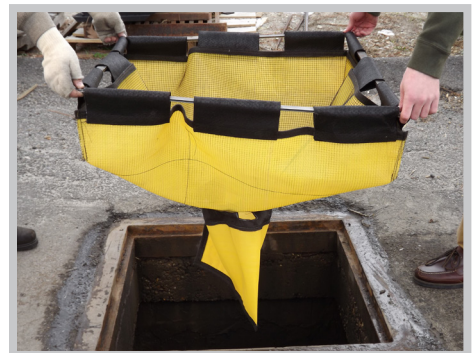


1.19

TYPE A



TYPE C



TYPE C

**SPECIFICATIONS**

Siltsack is manufactured from woven polypropylene geotextile and fits the opening of a catch basin or drop inlet.

**Specs for Siltsack Regular Flow**

PROPERTY	TEST METHOD	UNITS	TEST RESULTS
Grab Tensile	ASTM D4632	lbs	281 x 170
Grab Elongation	ASTM D4632	%	16 x 7
Puncture	ASTM D6241	lbs	1005
Trapezoid Tear	ASTM D4533	lbs	85 x 61
AOS	ASTM D4751	US Sieve	30
Flow Rate	ASTM D4491	gal/min/ft <sup>2</sup>	38.5
Permittivity	ASTM D4491	sec <sup>-1</sup>	0.51

**Specs for Siltsack High Flow**

PROPERTY	TEST METHOD	UNITS	TEST RESULTS
Grab Tensile	ASTM D4632	lbs	274 x 237
Grab Elongation	ASTM D4632	%	27 x 12
Puncture	ASTM D6241	lbs	754
Trapezoid Tear	ASTM D4533	lbs	63 x 56
AOS	ASTM D4751	US Sieve	20
Flow Rate	ASTM D4491	gal/min/ft <sup>2</sup>	250
Permittivity	ASTM D4491	sec <sup>-1</sup>	3.45

