

ACCOR TECHNOLOGY, INC.



FlowTite[®]

Valves, Connectors, Test Caps & Outlet Boxes

A Valve for all Reasons!

FlowTite®– The first supply stop that is code approved, and lead free to be installed on copper, CPVC, or PEX pipe and backed by a written 10 year labor and material Warranty since 1988.

One FlowTite Valve Fits All.

Patented **PUSHON®** Technology

EPDM rubber seals

White High Performance riser

Superior hydraulic stainless steel crimps

No stick push/pull handle operation.

Two internal stainless steel gripper rings and EPDM o-ring seals.

CPVC PIPE

- Eliminate expensive, messy, glue-on valve adapters.
- Eliminate dissimilar material or overtightening warnings.
- No Teflon tape requirements.
- Internal stainless gripper teeth and o'ring move with thermal expansion and contraction of pipe.

PEX PIPE

- No leaking barb valve crimps by eliminating tool adjustments and crimping in tight places.
- “Dual” internal stainless rings with more hydraulic strength than the pipe.
- No copper stub outs.
- No tube insert required

COPPER PIPE

- *FlowTite* code approved and installed on copper since 1988.
- No leaking compression fittings, soldering, or packing nut adjustments.
- No permanent pipe damage from brass ferrule. *FlowTite* is removable and reusable.

PATENTED

Patented worldwide with additional patents pending.

CERTIFICATION LISTINGS



Worldwide Patented *PUSHON*® Technology

Founded in Bellevue Washington in 1987, ACCOR® Technology set out to make the next generation plumbing connection. After all, there was no reason why the plumbing market couldn't experience the same change and innovation seen in many US industries.

The ubiquitous angle stop valve has had minimal changes since its inception over 50 years ago until ACCOR Technology designed and marketed its worldwide-patented *PUSHON* technology in 1988. During the development of the *FlowTite*® angle stop valve, the company interviewed numerous plumbing contractors and builders asking one simple question. What problems do you experience with the old metal stop valves and risers?

The answer was a list that included: leaking packing seals, compression nuts requiring adjustments and difficulty attaching risers in tight places — all resulting in plumber and builder call backs with little, if any, warranty protection.



Easy to use one-piece flexible faucet and dishwasher connectors eliminates leaking from copper fitting and tubing adjustments.



Innovative Product Design

ACCOR designed its patented *PUSHON* technology to overcome common problems associated with compression style valves. The unique o-ring design of *FlowTite* eliminates packing seal leaks, and compression problems. The internal stainless steel gripper ring mechanically attaches to the pipe without tools, and is tested to over 1000 psi. The valves and couplings are removable by twisting off counterclockwise, and are reusable.

Original One Piece Valve and Flexible Connector System

ACCOR's patented *PUSHON* technology makes its *FlowTite* valve the easiest and fastest valve and connector system to install. The design of the valve made it logical to attach the flexible connector in the factory. This "original one-piece" valve and flexible connector eliminates leaking field joints and human error providing a trouble free system. Years of in field experience has perfected our hydraulic stainless steel crimps, and High Performance connector construction.

Clean, White, Lead Free and Certified Health Safe



ACCOR's innovative design eliminates internal and external corrosion while introducing a clean, white look for today's homes. *FlowTite* is certified to health standards requested by the EPA and adopted by ANSI.

National Code Acceptance

FlowTite stop valves have more plumbing code listings than any other valve on the market – including IAPMO, NSF 61/9, Warnock Hersey and other local codes. Valves are manufactured in accordance with ANSI-A112.18.1M, ANSI-NSF61, CAN-CSA B125 and meet requirements of UPC, IPC, and CSA. See page 21 for specific product listing information.



Proven Quality Since 1988

ACCOR Technology has proven reliability and a solid track record with millions of valves installed since 1988. Our unique 10-year labor and material warranty ensures dedication to quality control. The proven patented *PUSHON* technology and the people that manufacture it, make ACCOR a company that you can trust.

Design Margin of Safety

The design criteria for all ACCOR®s products have a high margin of safety well beyond the standards, backed with the strongest warranty in the business. ACCOR has been manufacturing its patented *PUSHON*® technology in its Wenatchee, WA plant since 1988.

Hot water pull (180°F under direct load).



*Intermittent shock testing
(125psi - 180psi, 140°F, 30,000+ cycles).*

Engineered for Leak Free Performance

State of the art injection molding.



*Computerized welding
monitors each valve.*



Hydraulic crimping machines.

High Tech Manufacturing

State of the art injection molding and polymer material design allow ACCOR to improve the performance of its valves and couplings as compared to its metal counterparts.



Quality Control to Back Our Warranty

The focus of our production team is to provide the highest quality control that affords ACCOR Technology to offer its unique 10-year labor and material warranty.



*Daily hydrostatic testing
(shows 1400psi-actual pressure).*



*Production air
testing with
ultrasonic
leak detectors.*

Product Directory

Description	Page	Description	Page
White Lead Free FlowTite® 4ALL® Angle Stop Valves ----- <i>(Valve Only, No Connector)</i>	1-1	White FlowTite® Lead Free Couplings with High Performance™ Connectors ----- <i>(Connectors Only, No Valve)</i>	18-19
White Lead Free FlowTite® 4ALL® Angle Stop Valves with High Performance™ Connectors		Brushed Chrome FlowTite® Lead Free Couplings with High Performance™ Connectors ----- <i>(Connectors Only, No Valve)</i>	20-21
Lavatory / Sink Supply Kits -----	1-2	Lead Free FlowTite® Ice Maker Outlet Boxes with High Performance™ Connectors	
Toilet Supply Kits -----	3-3	Copper Pipe Applications -----	22-22
Dishwasher Supply Kits -----	3-4	CPVC Pipe Applications -----	23-23
Dishwasher / Ice Maker Dual Application Supply Kits -----	5-5	PEX Pipe Applications -----	24-24
Ice Maker Supply Kits -----	5-5	Factory Installed Arrestors -----	25-27
Brushed Chrome Lead Free FlowTite® 4ALL® Angle Stop Valves ----- <i>(Valve Only, No Connector)</i>	6-6	Ice Maker Outlet Box Accessories -----	28-28
Brushed Chrome Lead Free FlowTite® 4ALL® Angle Stop Valves with High Performance™ Connectors		Lead Free FlowTite® Test Caps and Couplings -----	28-28
Lavatory / Sink Supply Kits -----	6-7	Escutcheons, Rings, Clips and Gauges -----	28-28
Toilet Supply Kits -----	8-8	FlowTite® Codes, Listings and Standards -----	29-29
Dishwasher Supply Kits -----	8-9	Terms and Conditions -----	30-30
Dishwasher / Ice Maker Dual Application Supply Kits -----	9-9		
Dishwasher Supply Kits with Whirlpool Elbow -----	10-10		
Oil Rubbed Bronze Lead Free FlowTite® 4ALL® Angle Stop Valves -----	11-11		
Oil Rubbed Bronze Lead Free FlowTite® 4ALL® Angle Stop Valves with High Performance™ Connectors			
Lavatory / Sink Supply Kits -----	11-11		
Toilet Supply Kits -----	12-12		
White FlowTite® “HP Series” Lead Free High Performance™ Connectors ----- <i>(Connectors Only, No Valve)</i>			
Lavatory / Sink Supply -----	12-13		
Toilet Supply -----	13-13		
Dishwasher Supply -----	14-14		
Ice Maker and Filter Supply -----	14-14		
Brushed Chrome FlowTite® “HP Series” Lead Free High Performance™ Connectors ----- <i>(Connectors Only, No Valve)</i>			
Lavatory / Sink Supply -----	15-15		
Toilet Supply -----	16-16		
Ice Maker and Filter Supply -----	16-16		
Dishwasher Supply -----	17-17		

Lead Free *FlowTite*® 1/2" Angle Stop Valves

White Valve:

Product Code	Item Description	List Price (each)	Carton Quantity	Carton Weight
F PO5-3 (XF)	PUSHON angle stop 1/2" nom. x 3/8" O.D. Comp. with escutcheon.	4.96	100 ea	12 lb
F PO5-3 (XC)	PUSHON angle stop 1/2" nom. x 3/8" O.D. Comp. cap & shut off clip with escutcheon.	4.96	60 ea	7 lb
F PO5-3 (XFN)	PUSHON angle stop 1/2" nom. x 3/8" O.D. with escutcheon. (does not come with nut or ferrule)	3.97	100 ea	10.7 lb
F PO5-2 (XF)	PUSHON angle stop 1/2" nom. x 1/4" O.D. Comp. with escutcheon.	5.96	60 ea	7 lb



Lead Free One-Piece *FlowTite*® 1/2" Valves with High Performance™ Connectors

White Valve / PVC Connector

Lavatory / Sink Supply Kit - SOLD IN PAIRS

PUSHON angle stop 1/2" nom. with attached PVC High Performance connector x 1/2" reinforced polymer IPS nut with escutcheon.

Product Code	Length	List Price (pair)	Carton Quantity	Carton Weight
*F PO5LP6-5 (XP)	6"	16.25	50 pair	22 lb
*F PO5LP9-5 (XP)	9"	16.33	50 pair	25 lb
*F PO5LP12-5 (XP)	12"	16.42	50 pair	27 lb
*F PO5LP15-5 (XP)	15"	16.96	50 pair	30 lb
*F PO5LP20-5 (XP)	20"	18.22	50 pair	33 lb
*F PO5LP24-5 (XP)	24"	18.77	50 pair	35 lb
*F PO5LP30-5 (XP)	30"	19.42	25 pair	20 lb
*F PO5LP36-5 (XP)	36"	19.62	25 pair	23 lb



Lead Free One-Piece *FlowTite*[®] 1/2" Valves with High Performance[™] Connectors

White Valve / PVC Connector

Lavatory / Sink Supply Kit - SOLD IN PAIRS

Lavatory & Sink supply kits for "Copper or Chrome Drop" faucets or "Track Packs" PUSHON angle stop 1/2" nom. with attached PVC High Performance connector x 3/8" comp. adapter with escutcheon.

Product Code	Length	List Price (pair)	Carton Quantity	Carton Weight
F PO5LP6-3 (XC)	6"	18.06	50 pair	24 lb
F PO5LP9-3 (XC)	9"	18.38	50 pair	26 lb
F PO5LP12-3 (XC)	12"	18.96	50 pair	28 lb
F PO5LP15-3 (XC)	15"	19.54	50 pair	30 lb
F PO5LP20-3 (XC)	20"	20.85	50 pair	33 lb
F PO5LP24-3 (XC)	24"	21.43	50 pair	35 lb
F PO5LP30-3 (XC)	30"	22.09	25 pair	20 lb
F PO5LP36-3 (XC)	36"	22.33	25 pair	23 lb



PUSHON angle stop 1/2" nom. with attached PVC High Performance connector x 3/8" comp. polymer adapter with escutcheon.

Product Code	Length	List Price (pair)	Carton Quantity	Carton Weight
F PO5LP6-3 (PXC)	6"	14.45	50 pair	18 lb
F PO5LP9-3 (PXC)	9"	14.70	50 pair	19 lb
F PO5LP12-3 (PXC)	12"	15.17	50 pair	21 lb
F PO5LP15-3 (PXC)	15"	15.63	50 pair	24 lb
F PO5LP20-3 (PXC)	20"	16.68	50 pair	27 lb
F PO5LP24-3 (PXC)	24"	17.15	50 pair	31 lb
F PO5LP30-3 (PXC)	30"	17.67	25 pair	18 lb
F PO5LP36-3 (PXC)	36"	17.87	25 pair	19 lb

PUSHON angle stop 1/2" nom. with attached PVC High Performance connector x 3/8" comp. adapter without nut and ferrule with escutcheon.

Product Code	Length	List Price (pair)	Carton Quantity	Carton Weight
F PO5LP6-3 (XCN)	6"	17.20	50 pair	21 lb
F PO5LP9-3 (XCN)	9"	17.50	50 pair	23 lb
F PO5LP12-3 (XCN)	12"	18.06	50 pair	25 lb
F PO5LP15-3 (XCN)	15"	18.61	50 pair	26 lb
F PO5LP20-3 (XCN)	20"	19.86	50 pair	30 lb
F PO5LP24-3 (XCN)	24"	20.41	50 pair	33 lb
F PO5LP30-3 (XCN)	30"	21.04	25 pair	19 lb
F PO5LP36-3 (XCN)	36"	21.27	25 pair	21 lb



Lead Free One-Piece *FlowTite*® 1/2" Valves with High Performance™ Connectors

White Valve / PVC Connector

Toilet Supply Kit

PUSHON angle stop 1/2" nom. with attached PVC High Performance connector x 7/8" ballcock nut with escutcheon.

Product Code	Length	List Price (each)	Carton Quantity	Carton Weight
F PO5CP9-7 (XF)	9"	8.09	50 each	12 lb
F PO5CP12-7 (XF)	12"	8.14	50 each	13 lb
F PO5CP15-7 (XF)	15"	8.98	50 each	15 lb
F PO5CP20-7 (XF)	20"	9.11	50 each	16 lb



Dishwasher Supply Kit

PUSHON angle stop 1/2" nom. with attached PVC High Performance connector x 3/8" x 1/2" M.I.P. brass elbow with escutcheon.

Product Code	Length	List Price (each)	Carton Quantity	Carton Weight
F PO5LP48-3 (XL)	48"	18.13	25 each	16 lb
F PO5LP60-3 (XL)	60"	18.70	25 each	18 lb
F PO5LP72-3 (XL)	72"	20.29	25 each	20 lb
F PO5LP84-3 (XL)	84"	21.64	25 each	23 lb



PUSHON angle stop 1/2" nom. with attached PVC High Performance connector with inline arrestor x 3/8" x 1/2" M.I.P. brass elbow with escutcheon.

Product Code	Length	List Price (each)	Carton Quantity	Carton Weight
F PO5LP60-3A (XL)	60"	50.40	25 each	16 lb
F PO5LP72-3A (XL)	72"	51.45	25 each	18 lb
F PO5LP84-3A (XL)	84"	52.50	25 each	20 lb



PUSHON angle stop 1/2" nom. with attached PVC High Performance connector x 3/8" comp. nut with escutcheon.

Product Code	Length	List Price (each)	Carton Quantity	Carton Weight
F PO5LP48-3 (XE)	48"	13.99	25 each	13 lb
F PO5LP60-3 (XE)	60"	14.87	25 each	16 lb
F PO5LP72-3 (XE)	72"	15.90	25 each	18 lb
F PO5LP84-3 (XE)	84"	17.49	25 each	20 lb

Lead Free One-Piece *FlowTite*® 1/2" Valves with High Performance™ Connectors

White Valve / PVC Connector

Dishwasher Supply Kit with Arrestor

PUSHON angle stop 1/2" nom. with attached PVC High Performance connector with inline arrester x 3/8" comp. nut with escutcheon.

Product Code	Length	List Price (each)	Carton Quantity	Carton Weight
F PO5LP60-3A (XE)	60"	45.00	25 each	23 lb
F PO5LP72-3A (XE)	72"	46.00	25 each	25 lb
F PO5LP84-3A (XE)	84"	47.00	25 each	28 lb

PUSHON angle stop 1/2" nom. with attached PVC High Performance connector x 1/2" reinforced polymer IPS nut with escutcheon.

Product Code	Length	List Price (each)	Carton Quantity	Carton Weight
F PO5LP48-5 (XPE)	48"	13.99	25 each	13 lb
F PO5LP60-5 (XPE)	60"	14.87	25 each	16 lb
F PO5LP72-5 (XPE)	72"	15.90	25 each	18 lb
F PO5LP84-5 (XPE)	84"	17.49	25 each	20 lb

Dishwasher Supply Kit with Whirlpool Elbow

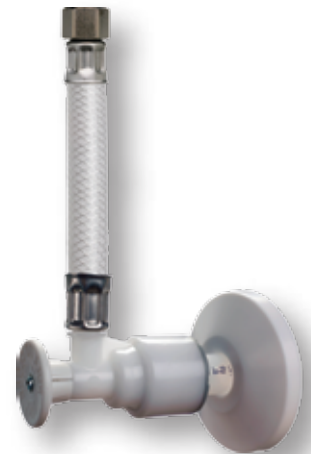
PUSHON angle stop 1/2" nom. with attached PVC High Performance connector x 3/8" Whirlpool Elbow with escutcheon.

Product Code	Length	List Price (each)	Carton Quantity	Carton Weight
F PO5LP60-3 (WXL)	60"	23.13	25 each	18 lb
F PO5LP72-3 (WXL)	72"	24.85	25 each	20 lb
F PO5LP84-3 (WXL)	84"	25.83	25 each	23 lb

Dishwasher Supply Kit with Whirlpool Elbow with Arrestor

PUSHON angle stop 1/2" nom. with attached PVC High Performance connector with inline arrester x 3/8" Whirlpool Elbow with escutcheon.

Product Code	Length	List Price (each)	Carton Quantity	Carton Weight
F PO5LP60-3A (WXL)	60"	55.65	25 each	19 lb
F PO5LP72-3A (WXL)	72"	56.65	25 each	21 lb
F PO5LP84-3A (WXL)	84"	57.23	25 each	24 lb



Lead Free One-Piece *FlowTite*® 1/2" Valves with High Performance™ Connectors

White Valve / PVC Connector

Dishwasher / Ice Maker Dual Application Supply Kit

PUSHON angle stop 1/2" nom. with attached 20" PVC High Performance connector with inline comp. tee x 1/2" reinforced polymer IPS nut with escutcheon.

Product Code	Item Description	List Price (each)	Carton Quantity	Carton Weight
F PO5LP4T15-5 (XPE)	3/8" comp. tee for dishwasher	17.16	50 each	28 lb
F PO5LP4I15-5 (XPE)	1/4" comp. tee for ice maker	18.02	50 each	28 lb



Ice Maker Supply Kit

PUSHON angle stop 1/2" nom. with attached PVC High Performance connector x 1/4" comp. nut with escutcheon.

Product Code	Length	List Price (each)	Carton Quantity	Carton Weight
F PO5IP24-2 (XF)	24"	10.98	25 each	7 lb
F PO5IP36-2 (XF)	36"	11.47	25 each	8 lb
F PO5IP48-2 (XF)	48"	11.96	25 each	10 lb
F PO5IP60-2 (XF)	60"	12.62	25 each	12 lb
F PO5IP72-2 (XF)	72"	13.28	25 each	13 lb
F PO5IP84-2 (XF)	84"	13.93	25 each	14 lb



Lead Free *FlowTite*® 1/2" Angle Stop Valves

Brushed Chrome Valve:

Product Code	Item Description	List Price (each)	Carton Quantity	Carton Weight
F PO5S-3 (XF)	PUSHON angle stop 1/2" nom. x 3/8"O.D. Comp. with escutcheon.	6.15	100 ea	12 lb
F PO5S-3 (XC)	PUSHON angle stop 1/2" nom. x 3/8"O.D. Comp. cap & shut off clip with escutcheon.	6.15	60 ea	7 lb
F PO5S-3 (XFN)	PUSHON angle stop 1/2" nom. x 3/8"O.D. with escutcheon. (does not come with nut or ferrule)	4.82	100 ea	10.7 lb
F PO5S-2 (XF)	PUSHON angle stop 1/2" nom. x 1/4"O.D. Comp. with escutcheon.	6.48	60 ea	7 lb



Lead Free One-Piece *FlowTite*® 1/2" Valves with High Performance™ Connectors

Brushed Chrome Valve / Braided Connector

Lavatory / Sink Supply Kit - SOLD IN PAIRS

PUSHON angle stop 1/2" nom. with attached braided High Performance connector x 1/2" reinforced polymer IPS nut with escutcheon.

Product Code	Length	List Price (pair)	Carton Quantity	Carton Weight
F PO5LS6-5 (XP)	6"	21.07	50 pair	21 lb
F PO5LS9-5 (XP)	9"	21.56	50 pair	23 lb
F PO5LS12-5 (XP)	12"	22.02	50 pair	25 lb
F PO5LS15-5 (XP)	15"	22.66	50 pair	27 lb
F PO5LS20-5 (XP)	20"	22.98	50 pair	31 lb
F PO5LS24-5 (XP)	24"	24.06	50 pair	34 lb
F PO5LS30-5 (XP)	30"	26.48	25 pair	20 lb
F PO5LS36-5 (XP)	36"	29.23	25 pair	22 lb



Lead Free One-Piece *FlowTite*® 1/2" Valves with High Performance™ Connectors

Brushed Chrome Valve / Braided Connector

Lavatory / Sink Supply Kit - SOLD IN PAIRS

Lavatory & Sink supply kits for “copper or chrome drop” faucets or “Track Packs” PUSHON angle stop 1/2” nom. with attached braided High Performance connector x 3/8” comp. adapter with escutcheon.

Product Code	Length	List Price (pair)	Carton Quantity	Carton Weight
F PO5LS6-3 (XC)	6"	21.75	50 pair	22 lb
F PO5LS9-3 (XC)	9"	23.85	50 pair	24 lb
F PO5LS12-3 (XC)	12"	24.84	50 pair	26 lb
F PO5LS15-3 (XC)	15"	25.52	50 pair	28 lb
F PO5LS20-3 (XC)	20"	25.85	50 pair	31 lb
F PO5LS24-3 (XC)	24"	26.99	50 pair	34 lb
F PO5LS30-3 (XC)	30"	29.53	25 pair	20 lb
F PO5LS36-3 (XC)	36"	32.41	25 pair	22 lb



PUSHON angle stop 1/2” nom. with attached braided High Performance connector x 3/8” comp. polymer adapter with escutcheon.

Product Code	Length	List Price (pair)	Carton Quantity	Carton Weight
F PO5LS6-3 (PXC)	6"	16.57	50 pair	16 lb
F PO5LS9-3 (PXC)	9"	19.08	50 pair	19 lb
F PO5LS12-3 (PXC)	12"	19.88	50 pair	21 lb
F PO5LS15-3 (PXC)	15"	20.41	50 pair	23 lb
F PO5LS20-3 (PXC)	20"	20.69	50 pair	26 lb
F PO5LS24-3 (PXC)	24"	21.59	50 pair	29 lb
F PO5LS30-3 (PXC)	30"	23.63	25 pair	16 lb
F PO5LS36-3 (PXC)	36"	25.94	25 pair	18 lb

PUSHON angle stop 1/2” nom. with attached braided High Performance connector x 3/8” comp. adapter without nut and ferrule with escutcheon.

Product Code	Length	List Price (pair)	Carton Quantity	Carton Weight
F PO5LS6-3 (XCN)	6"	20.71	50 pair	21 lb
F PO5LS9-3 (XCN)	9"	22.71	50 pair	23 lb
F PO5LS12-3 (XCN)	12"	23.66	50 pair	25 lb
F PO5LS15-3 (XCN)	15"	24.30	50 pair	26 lb
F PO5LS20-3 (XCN)	20"	24.62	50 pair	30 lb
F PO5LS24-3 (XCN)	24"	25.70	50 pair	33 lb
F PO5LS30-3 (XCN)	30"	28.12	25 pair	19 lb
F PO5LS36-3 (XCN)	36"	30.87	25 pair	21 lb



Lead Free One-Piece FlowTite[®] 1/2" Valves with High Performance[™] Connectors

Brushed Chrome Valve / Braided Connector

Toilet Supply Kit

PUSHON angle stop 1/2" nom. with attached braided High Performance connector x 7/8" ballcock nut with escutcheon.

Product Code	Length	List Price (each)	Carton Quantity	Carton Weight
F PO5CS9-7 (XF)	9"	10.73	50 each	11 lb
F PO5CS12-7 (XF)	12"	10.84	50 each	12 lb
F PO5CS15-7 (XF)	15"	11.33	50 each	13 lb
F PO5CS20-7 (XF)	20"	11.95	50 each	14 lb

Dishwasher Supply Kit

PUSHON angle stop 1/2" nom. with attached braided High Performance connector x 3/8" brass elbow with escutcheon.

Product Code	Length	List Price (each)	Carton Quantity	Carton Weight
F PO5LS48-3 (XL)	48"	26.75	25 each	15 lb
F PO5LS60-3 (XL)	60"	28.10	25 each	17 lb
F PO5LS72-3 (XL)	72"	31.49	25 each	19 lb
F PO5LS84-3 (XL)	84"	33.98	25 each	21 lb

PUSHON angle stop 1/2" nom. with attached braided High Performance connector with inline arrester x 3/8" brass elbow with escutcheon.

Product Code	Length	List Price (each)	Carton Quantity	Carton Weight
F PO5LS60-3A (XL)	60"	56.70	25 each	15 lb
F PO5LS72-3A (XL)	72"	58.80	25 each	17 lb
F PO5LS84-3A (XL)	84"	61.95	25 each	19 lb

PUSHON angle stop 1/2" nom. with attached braided High Performance connector x 3/8" comp. nut with escutcheon.

Product Code	Length	List Price (each)	Carton Quantity	Carton Weight
F PO5LS48-3 (XE)	48"	21.07	25 each	14 lb
F PO5LS60-3 (XE)	60"	23.49	25 each	15 lb
F PO5LS72-3 (XE)	72"	26.74	25 each	17 lb
F PO5LS84-3 (XE)	84"	30.84	25 each	19 lb



Lead Free One-Piece *FlowTite*® 1/2" Valve with High Performance™ Connectors

Brushed Chrome Valve / Braided Connector

Dishwasher Supply Kit

PUSHON angle stop 1/2" nom. with attached braided High Performance connector with inline arrester x 3/8" comp. nut with escutcheon.

Product Code	Length	List Price (each)	Carton Quantity	Carton Weight
F PO5LS60-3A (XE)	60"	51.00	25 each	14 lb
F PO5LS72-3A (XE)	72"	54.00	25 each	15 lb
F PO5LS84-3A (XE)	84"	56.00	25 each	17 lb

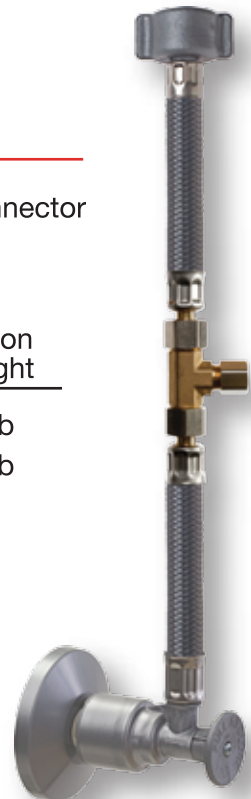
PUSHON angle stop 1/2" nom. with attached braided High Performance connector x 1/2" reinforced polymer IPS nut with escutcheon.

Product Code	Length	List Price (each)	Carton Quantity	Carton Weight
F PO5LS48-5 (XPE)	48"	21.07	25 each	14 lb
F PO5LS60-5 (XPE)	60"	23.49	25 each	15 lb
F PO5LS72-5 (XPE)	72"	26.74	25 each	17 lb
F PO5LS84-5 (XPE)	84"	30.84	25 each	19 lb

Dishwasher / Ice Maker Dual Application Supply Kit

PUSHON angle stop 1/2" nom. with attached 20" braided High Performance connector with inline comp. tee x 1/2" reinforced polymer IPS nut with escutcheon.

Product Code	Item Description	List Price (each)	Carton Quantity	Carton Weight
F PO5LS4T15-5 (XPE)	3/8" comp. tee for dishwasher	20.44	50 each	26 lb
F PO5LS4I15-5 (XPE)	1/4" comp. tee for ice maker	21.46	50 each	26 lb



Lead Free One-Piece *FlowTite*[®] 1/2" Valves with High Performance[™] Connectors

Brushed Chrome Valve / Braided Connector

Dishwasher Supply Kit with Whirlpool Elbow

PUSHON angle stop 1/2" nom. with attached Braided High Performance connector x 3/8" Whirlpool Elbow with escutcheon.

Product Code	Length	List Price (each)	Carton Quantity	Carton Weight
F PO5LS60-3 (WXL)	60"	28.10	25 each	18 lb
F PO5LS72-3 (WXL)	72"	31.49	25 each	20 lb
F PO5LS84-3 (WXL)	84"	33.98	25 each	23 lb



Dishwasher Supply Kit with Whirlpool Elbow with Arrestor

PUSHON angle stop 1/2" nom. with attached Braided High Performance connector with inline arrester x 3/8" Whirlpool Elbow with escutcheon.

Product Code	Length	List Price (each)	Carton Quantity	Carton Weight
F PO5LS60-3A (WXL)	60"	58.04	25 each	19 lb
F PO5LS72-3A (WXL)	72"	59.21	25 each	21 lb
F PO5LS84-3A (WXL)	84"	60.38	25 each	24 lb

Lead Free *FlowTite*® 1/2" Angle Stop Valves

Oil Rubbed Bronze Valve:

Product Code	Item Description	List Price (each)	Carton Quantity	Carton Weight
F PO5B-3 (XF)	PUSHON angle stop 1/2" nom. x 3/8"O.D. Comp. with escutcheon.	7.01	10 ea	1.45 lb
F PO5B-3 (XC)	PUSHON angle stop 1/2" nom. x 3/8"O.D. Comp. cap & shut off clip with escutcheon.	7.01	10 ea	1.5 lb
F PO5B-3 (XFN)	PUSHON angle stop 1/2" nom. x 3/8"O.D. with escutcheon. (does not come with nut or ferrule)	5.82	10 ea	1.35 lb

Oil Rubbed Bronze Valve / Braided Connector

Lavatory / Sink Supply Kit - SOLD IN PAIRS

1/2" Oil Rubbed Bronze PUSHON Stop with Attached Braided High Performance Connector x 1/2" IPS Nut.

Product Code	Length	List Price (pair)	Carton Quantity	Carton Weight
F PO5LB6-5 (XP)	6"	27.67	10 pair	5 lb
F PO5LB9-5 (XP)	9"	28.47	10 pair	5 lb
F PO5LB12-5 (XP)	12"	29.27	10 pair	6 lb
F PO5LB15-5 (XP)	15"	29.57	10 pair	6 lb
F PO5LB20-5 (XP)	20"	31.09	10 pair	7 lb
F PO5LB30-5 (XP)	30"	36.03	10 pair	8 lb

Lavatory & Sink Supply Kits for "Copper/Chrome Drop Faucets" or "Track Packs". 1/2" Oil Rubbed Bronze PUSHON Stop with Attached Braided High Performance Connector x 3/8" Polymer Comp. Adapter.

Product Code	Length	List Price (pair)	Carton Quantity	Carton Weight
F PO5LB6-3 (PXC)	6"	28.44	10 pair	5 lb
F PO5LB9-3 (PXC)	9"	29.05	10 pair	5 lb
F PO5LB12-3 (PXC)	12"	30.05	10 pair	6 lb
F PO5LB15-3 (PXC)	15"	30.85	10 pair	6 lb
F PO5LB20-3 (PXC)	20"	32.69	10 pair	7 lb



Toilet Supply Kit

1/2" Oil Rubbed Bronze PUSHON Stop with Attached Braided High Performance Connector x 7/8" Ballcock Nut.

Product Code	Length	List Price (each)	Carton Quantity	Carton Weight
F PO5CB9-7 (XF)	9"	13.87	10 each	12 lb
F PO5CB12-7 (XF)	12"	14.50	10 each	13 lb
F PO5CB15-7 (XF)	15"	15.25	10 each	15 lb
F PO5CB20-7 (XF)	20"	15.61	10 each	16 lb



FlowTite® "HP Series" Lead Free High Performance™ Connectors

White PVC Connector:

Lavatory / Sink Supply

3/8" comp. nut x 1/2" reinforced polymer IPS nut.

Product Code	Length	List Price (each)	Carton Quantity	Carton Weight
RLP12-5 (PF)	12"	3.48	50 each	11 lb
RLP15-5 (PF)	15"	3.81	50 each	13 lb
RLP20-5 (PF)	20"	4.09	50 each	15 lb
RLP24-5 (PF)	24"	4.36	50 each	16 lb
RLP30-5 (PF)	30"	4.78	50 each	19 lb
RLP36-5 (PF)	36"	5.24	25 each	12 lb

1/2" reinforced polymer IPS nut x 1/2" reinforced polymer IPS nut.

Product Code	Length	List Price (each)	Carton Quantity	Carton Weight
R5LP12-5 (PF)	12"	3.73	50 each	12 lb
R5LP15-5 (PF)	15"	3.93	50 each	14 lb
R5LP20-5 (PF)	20"	4.24	50 each	16 lb
R5LP24-5 (PF)	24"	4.52	50 each	17 lb
R5LP30-5 (PF)	30"	5.01	50 each	20 lb
R5LP36-5 (PF)	36"	5.49	25 each	12 lb

3/8" comp. nut x 3/8" comp. nut.

Product Code	Length	List Price (each)	Carton Quantity	Carton Weight
RLP12-3 (F)	12"	3.83	50 each	11 lb
RLP15-3 (F)	15"	4.01	50 each	13 lb
RLP20-3 (F)	20"	4.29	50 each	15 lb
RLP24-3 (F)	24"	4.56	50 each	16 lb
RLP30-3 (F)	30"	5.01	50 each	19 lb
RLP36-3 (F)	36"	5.45	25 each	11 lb



FlowTite® “HP Series” Lead Free High Performance™ Connectors

White PVC Connector:

Lavatory / Sink Supply

3/8” comp. nut x 3/8” brass comp. adapter.

Product Code	Length	List Price (each)	Carton Quantity	Carton Weight
RLP9-3 (CF)	9”	5.59	50 each	10 lb
RLP12-3 (CF)	12”	5.81	50 each	12 lb
RLP15-3 (CF)	15”	6.08	50 each	14 lb
RLP20-3 (CF)	20”	6.36	50 each	16 lb
RLP24-3 (CF)	24”	6.54	50 each	17 lb
RLP30-3 (CF)	30”	6.92	50 each	20 lb
RLP36-3 (CF)	36”	7.35	25 each	23 lb



Toilet Supply

3/8” comp. nut x 7/8” ballcock nut.

Product Code	Length	List Price (each)	Carton Quantity	Carton Weight
RCP9-7 (F)	9”	3.52	50 each	10 lb
RCP12-7 (F)	12”	3.68	50 each	11 lb
RCP15-7 (F)	15”	3.85	50 each	13 lb
RCP20-7 (F)	20”	4.13	50 each	15 lb



FlowTite[®] “HP Series” Lead Free High Performance™ Connectors

White PVC Connector:

Dishwasher Supply

3/8” comp. nut x 3/8” comp. nut.

Product Code	Length	List Price (each)	Carton Quantity	Carton Weight
RLP48-3 (E)	48”	6.14	25 each	13 lb
RLP60-3 (E)	60”	6.80	25 each	16 lb
RLP72-3 (E)	72”	7.58	25 each	18 lb
RLP84-3 (E)	84”	8.28	25 each	20 lb
RLP120-3 (E)	120”	10.32	25 each	26 lb
RLP144-3 (E)	144”	11.89	25 each	28 lb



3/8” comp. nut x 3/8” brass elbow.

Product Code	Length	List Price (each)	Carton Quantity	Carton Weight
RLP48-3 (EL)	48”	8.76	25 each	15 lb
RLP60-3 (EL)	60”	9.48	25 each	18 lb
RLP72-3 (EL)	72”	10.22	25 each	20 lb
RLP84-3 (EL)	84”	10.84	25 each	22 lb
RLP120-3 (EL)	120”	12.91	25 each	28 lb
RLP144-3 (EL)	144”	14.52	25 each	29 lb



Ice Maker and Filter Supply

1/4” comp. nut x 1/4” comp. nut.

Product Code	Length	List Price (each)	Carton Quantity	Carton Weight
R2IP24-2 (F)	24”	5.73	25 each	6 lb
R2IP36-2 (F)	36”	6.62	25 each	7 lb
R2IP48-2 (F)	48”	7.04	25 each	9 lb
R2IP60-2 (F)	60”	7.67	25 each	10 lb
R2IP72-2 (F)	72”	8.20	25 each	11 lb
R2IP84-2 (F)	84”	8.70	25 each	12 lb
R2IP120-2 (F)	120”	10.13	25 each	17 lb



FlowTite® “HP Series” Lead Free High Performance™ Connectors

Brushed Chrome Braided Connector:

Lavatory and Sink Supply

3/8” comp. nut x 1/2” reinforced polymer IPS nut.

Product Code	Length	List Price (each)	Carton Quantity	Carton Weight
RLS12-5 (PF)	12”	4.46	50 each	10 lb
RLS15-5 (PF)	15”	5.28	50 each	12 lb
RLS20-5 (PF)	20”	5.47	50 each	13 lb
RLS24-5 (PF)	24”	6.02	50 each	15 lb
RLS30-5 (PF)	30”	6.76	50 each	18 lb
RLS36-5 (PF)	36”	7.70	25 each	10 lb



3/8” comp. nut x 3/8” comp. nut.

Product Code	Length	List Price (each)	Carton Quantity	Carton Weight
RLS12-3 (F)	12”	4.67	50 each	10 lb
RLS15-3 (F)	15”	5.05	50 each	12 lb
RLS20-3 (F)	20”	5.68	50 each	13 lb
RLS24-3 (F)	24”	6.22	50 each	15 lb
RLS30-3 (F)	30”	7.08	50 each	18 lb
RLS36-3 (F)	36”	7.93	25 each	10 lb



3/8” comp. nut x 3/8” brass comp. adapter.

Product Code	Length	List Price (each)	Carton Quantity	Carton Weight
RLS9-3 (CF)	9”	5.64	50 each	9 lb
RLS12-3 (CF)	12”	6.29	50 each	11 lb
RLS15-3 (CF)	15”	6.67	50 each	13 lb
RLS20-3 (CF)	20”	7.27	50 each	14 lb
RLS24-3 (CF)	24”	7.85	50 each	16 lb
RLS30-3 (CF)	30”	8.71	50 each	19 lb
RLS36-3 (CF)	36”	9.56	25 each	11 lb



FlowTite[®] “HP Series” Lead Free High Performance™ Connectors

Brushed Chrome Braided Connector:

Toilet Supply

3/8” comp. nut x 7/8” ballcock nut.

Product Code	Length	List Price (each)	Carton Quantity	Carton Weight
RCS9-7 (F)	9”	4.12	50 each	9 lb
RCS12-7 (F)	12”	4.51	50 each	10 lb
RCS15-7 (F)	15”	4.89	50 each	12 lb
RCS20-7 (F)	20”	5.51	50 each	14 lb



Ice Maker and Filter Supply

1/4” comp. nut x 1/4” comp. nut

Product Code	Length	List Price (each)	Carton Quantity	Carton Weight
R2IS24-2 (F)	24”	9.10	25 each	5 lb
R2IS36-2 (F)	36”	11.30	25 each	6 lb
R2IS48-2 (F)	48”	13.50	25 each	8 lb
R2IS60-2 (F)	60”	15.70	25 each	9 lb
R2IS72-2 (F)	72”	17.50	25 each	10 lb
R2IS84-2 (F)	84”	20.00	25 each	11 lb
R2IS120-2 (F)	120”	26.90	25 each	16 lb



Lead Free One-Piece *FlowTite*® 1/2" Couplings with High Performance™ Connectors

Brushed Chrome Braided Connector:

Dishwasher Supply

3/8" comp. nut x 3/8" comp. nut.

Product Code	Length	List Price (each)	Carton Quantity	Carton Weight
RLS48-3 (E)	48"	8.19	25 each	12 lb
RLS60-3 (E)	60"	10.97	25 each	15 lb
RLS72-3 (E)	72"	12.50	25 each	17 lb
RLS84-3 (E)	84"	14.05	25 each	19 lb
RLS120-3 (E)	120"	18.58	25 each	25 lb
RLS144-3 (E)	144"	21.67	25 each	27 lb



3/8" comp. nut x 3/8" x 1/2" M.I.P. brass elbow.

Product Code	Length	List Price (each)	Carton Quantity	Carton Weight
RLS48-3 (EL)	48"	13.18	25 each	14 lb
RLS60-3 (EL)	60"	14.82	25 each	16 lb
RLS72-3 (EL)	72"	16.49	25 each	18 lb
RLS84-3 (EL)	84"	18.15	25 each	20 lb
RLS120-3 (EL)	120"	23.15	25 each	23 lb
RLS144-3 (EL)	144"	26.53	25 each	24 lb



Lead Free One-Piece FlowTite[®] 1/2" Couplings with High Performance™ Connectors

White PVC Connector:

PUSHON coupling 1/2" nom. with attached PVC High Performance connector x *PUSHON* coupling 1/2" nom.

Product Code	Length	List Price (each)	Carton Quantity	Carton Weight
F PR50P12PR (XF)	12"	10.88	50 each	11 lb
F PR50P15PR (XF)	15"	11.91	50 each	13 lb
F PR50P20PR (XF)	20"	12.23	50 each	15 lb
F PR50P24PR (XF)	24"	12.57	50 each	17 lb
F PR50P30PR (XF)	30"	13.57	50 each	19 lb
F PR50P36PR (XF)	36"	13.63	25 each	11 lb
F PR50P48PR (XF)	48"	16.11	25 each	13 lb



PUSHON coupling 1/2" nom. with attached PVC High Performance connector x 1/2" reinforced polymer IPS nut.

Product Code	Length	List Price (each)	Carton Quantity	Carton Weight
F PR50LP12-5 (XPE)	12"	10.25	50 each	11 lb
F PR50LP15-5 (XPE)	15"	11.13	50 each	13 lb
F PR50LP20-5 (XPE)	20"	11.57	50 each	14 lb
F PR50LP24-5 (XPE)	24"	11.91	50 each	15 lb
F PR50LP30-5 (XPE)	30"	12.35	50 each	17 lb
F PR50LP36-5 (XPE)	36"	12.89	25 each	11 lb
F PR50LP48-5 (XPE)	48"	14.66	25 each	13 lb



Lead Free One-Piece *FlowTite*® 1/2" Couplings with High Performance™ Connectors

White PVC Connector:

PUSHON valve 1/2" nom. with attached PVC High Performance connector x *PUSHON* coupling 1/2" nom.

Product Code	Length	List Price (each)	Carton Quantity	Carton Weight
F PO5P12PR (XF)	12"	11.99	50 each	11 lb
F PO5P15PR (XF)	15"	12.23	50 each	12 lb
F PO5P20PR (XF)	20"	12.64	50 each	14 lb
F PO5P24PR (XF)	24"	13.88	50 each	16 lb
F PO5P30PR (XF)	30"	14.50	50 each	18 lb
F PO5P36PR (XF)	36"	14.98	25 each	14 lb
F PO5P48PR (XF)	48"	16.55	25 each	16 lb



One-Piece Pipe Repair** or Test Kits (Removable & Reusable)

PUSHON coupling 1/2" nom. with attached PVC High Performance connector x 1/2" reinforced polymer IPS nut with threaded *PUSHON* coupling 1/2" nom.

Product Code	Length	List Price (each)	Carton Quantity	Carton Weight
F PR50P125TRK (XF)	12"	10.00	10 each	3 lb
F PR50P155TRK (XF)	15"	10.50	10 each	3 lb
F PR50P205TRK (XF)	20"	11.13	10 each	4 lb
F PR50P305TRK (XF)	30"	13.00	10 each	6 lb
F PR50P485TRK (XF)	48"	15.50	10 each	7 lb



** For Temporary Use Only

Lead Free One-Piece FlowTite[®] 1/2" Couplings with High Performance[™] Connectors

Brushed Chrome Braided Connector:

PUSHON coupling 1/2" nom. with attached braided High Performance connector x *PUSHON* coupling 1/2" nom.

Product Code	Length	List Price (each)	Carton Quantity	Carton Weight
F PR50S12PR (XF)	12"	14.11	50 each	9 lb
F PR50S15PR (XF)	15"	15.46	50 each	11 lb
F PR50S20PR (XF)	20"	17.59	50 each	13 lb
F PR50S24PR (XF)	24"	19.46	50 each	15 lb
F PR50S30PR (XF)	30"	22.09	50 each	17 lb
F PR50S36PR (XF)	36"	24.39	25 each	10 lb
F PR50S48PR (XF)	48"	30.85	25 each	12 lb



PUSHON coupling 1/2" nom. with attached braided High Performance connector x 1/2" reinforced polymer IPS nut.

Product Code	Length	List Price (each)	Carton Quantity	Carton Weight
F PR50LS12-5 (XPE)	12"	12.91	50 each	9 lb
F PR50LS15-5 (XPE)	15"	14.28	50 each	11 lb
F PR50LS20-5 (XPE)	20"	16.49	50 each	13 lb
F PR50LS24-5 (XPE)	24"	18.27	50 each	15 lb
F PR50LS30-5 (XPE)	30"	20.99	50 each	17 lb
F PR50LS36-5 (XPE)	36"	23.63	25 each	11 lb
F PR50LS48-5 (XPE)	48"	28.98	25 each	13 lb



Lead Free One-Piece *FlowTite*® 1/2” Couplings with High Performance™ Connectors

Brushed Chrome Braided Connector:

PUSHON valve 1/2” nom. with attached braided High Performance connector x *PUSHON* coupling 1/2” nom.

Product Code	Length	List Price (each)	Carton Quantity	Carton Weight
F PO5S12PR (XF)	12”	16.60	50 each	10 lb
F PO5S15PR (XF)	15”	17.94	50 each	11 lb
F PO5S20PR (XF)	20”	20.18	50 each	13 lb
F PO5S24PR (XF)	24”	22.08	50 each	15 lb
F PO5S30PR (XF)	30”	24.77	50 each	17 lb
F PO5S36PR (XF)	36”	28.07	25 each	13 lb
F PO5S48PR (XF)	48”	33.55	25 each	15 lb



One-Piece Pipe Repair** or Test Kits (Removable & Reusable)

PUSHON coupling 1/2” nom. with attached braided High Performance connector x 1/2” reinforced polymer IPS nut with threaded *PUSHON* coupling 1/2” nom.

Product Code	Length	List Price (each)	Carton Quantity	Carton Weight
F PR50S125TRK (XF)	12”	16.43	10 each	2 lb
F PR50S155TRK (XF)	15”	17.28	10 each	2 lb
F PR50S205TRK (XF)	20”	19.26	10 each	3 lb
F PR50S305TRK (XF)	30”	21.80	10 each	4 lb
F PR50S485TRK (XF)	48”	25.25	10 each	5 lb



** For Temporary Use Only

Lead Free *FlowTite*[®] Ice Maker Outlet Boxes with Copper Pipe and High Performance™ Connectors

The *FlowTite* valves and connectors used in these assemblies are NSF 61/9 listed. ACCOR only uses Copper, CPVC, and PEX pipe that meets the requirements of the applicable industry standards for each type of pipe.

Ice Maker Box with Valve Only

Round high impact polystyrene box with installed stop valve 1/2" nom. x 1/4" comp. outlet with faceplate and 8" copper pipe stub out.

Product Code		List Price (each)	Carton Quantity	Carton Weight
OBPO5-2 (F)	Six pack	16.59	6 each	6 lb
OBPO5-2 (T)	Track pack	16.59	12 each	12 lb



White Valve / PVC Connector:

Ice Maker Box - One Piece

Round high impact polystyrene box with installed stop valve 1/2" nom. with factory attached PVC High Performance connector x 1/4" comp. nut with faceplate and protective cover and 8" copper pipe stub out.

Product Code	Length		List Price (each)	Carton Quantity	Carton Weight
OBPO5IP84-2 (F)	84"	Six pack	24.91	6 each	9 lb
OBPO5IP84-2 (T)	84"	Track pack	24.91	12 each	18 lb



White Valve / Braided Connector:

Ice Maker Box - One Piece

Round high impact polystyrene box with installed stop valve 1/2" nom. with factory attached braided High Performance connector x 1/4" comp. nut with faceplate and protective cover and 8" copper pipe stub out.

Product Code	Length		List Price (each)	Carton Quantity	Carton Weight
OBPO5IS84-2 (F)	84"	Six pack	33.25	6 each	9 lb
OBPO5IS84-2 (T)	84"	Track pack	33.25	12 each	18 lb



Lead Free *FlowTite*® Ice Maker Outlet Boxes with CPVC Pipe and High Performance™ Connectors

The *FlowTite* valves and connectors used in these assemblies are NSF 61/9 listed. ACCOR only uses Copper, CPVC, and PEX pipe that meets the requirements of the applicable industry standards for each type of pipe.

Ice Maker Box with Valve Only

Round high impact polystyrene box with installed stop valve 1/2" nom. x 1/4" comp. outlet with faceplate and 6" CPVC pipe stub out.

Product Code		List Price (each)	Carton Quantity	Carton Weight
VBPO5-2 (F)	Six pack	16.32	6 each	6 lb
VBPO5-2 (T)	Track pack	16.32	12 each	12 lb



White Valve / PVC Connector:

Ice Maker Box - One Piece

Round high impact polystyrene box with installed stop valve 1/2" nom. with factory attached PVC High Performance connector x 1/4" comp. nut with faceplate and protective cover and 6" CPVC pipe stub out.

Product Code	Length	List Price (each)	Carton Quantity	Carton Weight
VBPO5IP84-2 (F)	84" Six pack	26.05	6 each	9 lb
VBPO5IP84-2 (T)	84" Track pack	26.05	12 each	18 lb



White Valve / Braided Connector:

Ice Maker Box - One Piece

Round high impact polystyrene box with installed stop valve 1/2" nom. with factory attached braided High Performance connector x 1/4" comp. nut with faceplate and protective cover and 6" CPVC pipe stub out.

Product Code	Length	List Price (each)	Carton Quantity	Carton Weight
VBPO5IS84-2 (F)	84" Six pack	33.70	6 each	7 lb
VBPO5IS84-2 (T)	84" Track Pack	33.70	12 each	14 lb



Lead Free *FlowTite*® Ice Maker Outlet Boxes with PEX Copper Adapter / Made-to-Order PEX Tubing and High Performance™ Connectors

The *FlowTite* valves and connectors used in these assemblies are NSF 61/9 listed. ACCOR only uses Copper, CPVC, and PEX pipe that meets the requirements of the applicable industry standards for each type of pipe.

Ice Maker Box with Valve Only

Round high impact polystyrene box with installed stop valve 1/2" nom. x 1/4" comp. outlet with faceplate — 2 1/2" copper adapter for PEX (SDR 9 tubing conforms to ASTM F876/F877 and crimp rings made to F1807).

Product Code	Description	List Price (each)	Carton Quantity	Carton Weight
XBPO5-2 (F)	SDR9 PEX Ad. Fitting	18.38	6 each	6 lb
XBPO5-2 (T)	SDR9 PEX Ad. Fitting	18.38	12 each	12 lb
PBPO5-2 (WT)	Uponor PEX tubing	17.90	12 each	12 lb



White Valve / PVC Connector:

Ice Maker Box - One Piece

Round high impact polystyrene box with installed stop valve 1/2" nom. with factory attached PVC High Performance connector x 1/4" comp. nut with faceplate and protective cover — 2 1/2" copper adapter for PEX (SDR 9 tubing conforms to ASTM F876/F877 and crimp rings made to F1807).

Product Code	Length	Description	List Price (each)	Carton Quantity	Carton Weight
XBPO5IP84-2 (F)	84"	SDR9 PEX Ad. Fitting	26.81	6 each	9 lb
XBPO5IP84-2 (T)	84"	SDR9 PEX Ad. Fitting	26.81	12 each	18 lb
PBPO5IP84-2 (WT)	84"	Uponor PEX tube	27.50	12 each	18 lb



Lead Free *FlowTite*® Ice Maker Outlet Boxes with PEX Copper Adapter / Made-to-Order PEX Tubing and High Performance™ Connectors

The *FlowTite* valves and connectors used in these assemblies are NSF 61/9 listed. ACCOR only uses Copper, CPVC, and PEX pipe that meets the requirements of the applicable industry standards for each type of pipe.

Reinforced Braided:

Ice Maker Box - One Piece

Round high impact polystyrene box with installed stop valve 1/2" nom. with factory attached braided High Performance connector x 1/4" comp. nut with faceplate and protective cover— 2 1/2" copper adapter for PEX (SDR 9 tubing conforms to ASTM F876/F877 and crimp rings made to F1807).



XBPO5IS-2

Product Code	Length	Description	List Price (each)	Carton Quantity	Carton Weight
XBPO5IS84-2 (T)	84"	SDR9 PEX Adapter Fitting	34.20	12 each	14 lb
PBPO5IS84-2 (WT)	84"	Uponor PEX tubing	35.90	12 each	14 lb

Lead Free *FlowTite*® Ice Maker Outlet Boxes with Factory Installed Water Hammer Arrestors and High Performance™ Connectors

Round high impact polystyrene box with installed stop valve 1/2" nom. x 1/4" comp. outlet with faceplate and protective cover installed with arrester.

Ice Maker Box with Valve Only and Arrester for Copper

Product Code	Description	List Price (each)	Carton Quantity	Carton Weight
OBPO5-2A (T)	Copper pipe	45.00	12 each	11 lb



OBPO5-2A

Ice Maker Box with Valve Only and Arrester for CPVC

Product Code	Description	List Price (each)	Carton Quantity	Carton Weight
VBPO5-2A (T)	CPVC pipe	59.00	12 each	11 lb
VBPO5-2AP (T)	CPVC Pipe	36.75	12 each	9 lb



VBPO5-2A

Lead Free *FlowTite*® Ice Maker Outlet Boxes with Factory Installed Water Hammer Arrestors and High Performance™ Connectors

Round high impact polystyrene box with installed stop valve 1/2" nom. x 1/4" comp. outlet with faceplate and protective cover installed with arrester.

Ice Maker Box with Valve Only and Arrester for PEX

Product Code		List Price (each)	Carton Quantity	Carton Weight
XBPO5-2A (T)	SDR9 PEX Adapter	50.00	12 each	11 lb
XBPO5-2A (WT)	Uponor PEX Adapter	49.00	12 each	11 lb



White Valve / PVC Connector:

Round high impact polystyrene box with installed stop valve 1/2" nom. with factory attached PVC High Performance connector x 1/4" comp. nut with faceplate and protective cover installed with arrester.

Ice Maker Box - One Piece with Arrester for Copper

Product Code	Length	Description	List Price (each)	Carton Quantity	Carton Weight
OBPO5IP84-2A (T)	84"	Copper pipe	56.00	12 each	16 lb



Ice Maker Box - One Piece with Arrester for CPVC

Product Code	Length	Description	List Price (each)	Carton Quantity	Carton Weight
VBPO5IP84-2A (T)	84"	CPVC pipe	64.00	12 each	16 lb
VBPO5IP84-2AP (T)	84"	CPVC pipe	47.00	12 each	11 lb



Ice Maker Box with Valve Only and Arrester for PEX

Product Code	Length	Description	List Price (each)	Carton Quantity	Carton Weight
XBPO5IP84-2A (T)	84"	SDR9 PEX Adapt.	59.00	12 each	16 lb
XBPO5IP84-2A (WT)	84"	Uponor PEX Adapt.	60.00	12 each	16 lb



Lead Free *FlowTite*® Ice Maker Outlet Boxes with Factory Installed Water Hammer Arrestors and High Performance™ Connectors

White Valve / PVC Connector:

Round high impact polystyrene box with installed stop valve 1/2" nom. with factory attached braided High Performance connector x 1/4" comp. nut with faceplate and protective cover installed with arrester.

Ice Maker Box - One Piece with Arrester for Copper

Product Code	Length		List Price (each)	Carton Quantity	Carton Weight
OBPO5IS84-2A (T)	84"	Copper pipe	58.77	12 each	16 lb



OBPO5IS-2A

Ice Maker Box - One Piece with Arrester for CPVC

Product Code	Length		List Price (each)	Carton Quantity	Carton Weight
VBPO5IS84-2A (T)	84"	CPVC pipe	75.00	12 each	16 lb
VBPO5IS84-2AP (T)	84"	CPVC pipe	56.50	12 each	11 lb



VBPO5IS-2A

Ice Maker Box - One Piece with Arrester for PEX

Product Code	Length		List Price (each)	Carton Quantity	Carton Weight
XBPO5IS84-2A (T)	84"	SDR9 PEX Adapt.	66.62	12 each	16 lb
XBPO5IS84-2A (WT)	84"	Uponor PEX Adapt.	68.00	12 each	16 lb



XBPO5IS-2A

FlowTite[®] Ice Maker Outlet Box Accessories

Product Code	Description	List Price (each)	Carton Quantity	Carton Weight
BOXONLY-I	Round empty high impact polystyrene box	7.21	6 each	6 lb
FACEPLATE-I	FlowTite ice maker box face plate	3.38	6 each	1 lb
BXCOV	Clear protective cover for FlowTite ice maker boxes.	1.64	6 each	1 lb

Lead Free 1/2" FlowTite[®] Test Caps and Couplings

Product Code	Description	List Price (each)	Carton Quantity	Carton Weight
F PO5CAP (XF)	1/2" PUSHON test cap Copper/CPVC/PEX only	1.59	100 each	5 lb
PR50T5 (XF)	1/2" PUSHON coupling x 1/2" male IPS	2.20	100 each	5 lb
PR50T5C (XF)	1/2" PUSHON bleeder cap with removable 1/2" brass cap and seal	3.01	100 each	5 lb



PO5-CAP (F)



PR50T5 (F)

Escutcheons, Rings, Clips and Gauges

Product Code	Description	List Price (each)	Carton Quantity	Carton Weight
PO5E	White polymer escutcheon	.36	25 each	1 lb
PO5E-S	Brushed Chrome polymer escutcheon	.39	25 each	1 lb
PO5RING	1/2" PUSHON pipe holder ring	.36	25 each	1 lb
CLIP	Polymer removable clip for handle	.20	100 each	1 lb
PO5 AP	1/2" PUSHON applicator gauge	1.34	50 each	4 lb



PO5E



PO5RING



PO5AP

FlowTite® Codes, Listings and Standards

FlowTite Product:	Listings:	Mfg. in Accordance With:
Supply Stop Valves:	NSF 61/9 Listed IAPMO File 2657 (cUPC*/IPC, CSA) IAPMO File 6518 other city, county and state approvals	NSF/ANSI 61/9 Annex F Certified ASME A112.18.1/CSA B125.1 Cal AB 1953 - NSF 372 Low Lead
Coupling Connectors:	NSF 61/9 Listed IAPMO File 2657 (cUPC*/IPC, CSA) IAPMO File 6518	NSF/ANSI 61/9 Annex F Certified ASME A112.18.1/CSA B125.1 Cal AB 1953 - NSF 372 Low Lead
Flexible Water Connectors:	NSF 61/9 Listed IAPMO File 3969 (UPC/IPC) IAPMO File 6518	NSF/ANSI 61/9 Annex F Certified ASME A112.18.6/CSA B125.6 Cal AB 1953 - NSF 372 Low Lead
Ice Maker Boxes:	IAPMO File 3893 (UPC/IPC)	PS 54-92
Test Caps, Repair Kits:	NSF 61/9 Listed	NSF/ANSI 61/9 Annex F Certified

* all angle stop valves except dual application valves

Code Key

ANSI	American National Standard Institute
ASME	American Society of Mechanical Engineers
ASTM	American Society for Testing & Materials
CSA	Canadian Standards Association
IAPMO	International Association of Plumbing & Mechanical Officials
IPC	International Plumbing Code
NSF	National Sanitation Foundation
UPC	Uniform Plumbing Code

ACCOR Terms and Conditions

Freight

FREIGHT TERMS: All shipments are F. O. B. shipping point. Shipments from factory less than \$1,500 U.S. are F. O. B. factory. Factory shipments of \$1,500 and over within the continental U.S. and Canada will be prepaid and allowed when made at the lowest motor carrier transportation rate.

“F. O. B. shipping point” or “F. O. B. origin” indicates the buyer takes responsibility for the goods when the goods leave the seller’s premises.

Terms of Sale

All sales are F. O. B. shipping point.

Payment Terms

Invoices are due and payable 30 days from the date of invoice. A 2% cash discount is allowed on net amount of invoice if paid on or before the 10th of the following month. Invoices dated on or after the 25th of the current month will be considered as dated the first of the next month. Postmark on envelope will be considered date of check.

Discounts not available on freight or surcharges.

General

All discounts are for orders shipped to one destination.

Prices

All prices subject to change without notice. Orders will be invoiced at prices at time of shipment. A 5% surcharge will be added to orders of less than carton quantity.*

Returns

Any return of any products must be approved by ACCOR Technology, Inc. and issued Return Goods Authorization number (RGA). Absolutely no returns will be accepted or replaced without an RGA#. Products which are obsolete or made to order CANNOT be returned. ACCOR reserves the right to deny any RGA request of non-defective product. Approved requests will include a service charge of 25% of the net purchased price of the goods plus all transportation expenses. Loss and/or damage claims must be reported within 5 days of receipt of order. Material returned with our consent will be replaced less the value of the freight and 25% handling charge.

New FlowTite® Icemaker Box

ACCOR TECHNOLOGY, INC.



ACCOR's round *FlowTite* icemaker box, with integral one-piece valve and factory applied 7' flexible connector, eliminates call backs and costly floor damage. This unique design prevents crooked installations and the protective cover at rough in maintains the clean, white look (patent pending).



The "CORE" of ACCOR® Technology is found in its patented *PushOn*® technology. The company, which started making the best angle stop over 12 years ago, has expanded its coupling technology to connectors, test caps, and ice maker boxes. New product introductions will continue with the same objective—a clean, modern look that is easily installed and superior in long term performance!

**Thank you for choosing
ACCOR's products!**

FlowTite® the Clean Look for Today's Home



ACCOR TECHNOLOGY, INC.

10 YEAR LIMITED WARRANTY



Backed by the Best Owners Warranty on the Market

Headquarters
ACCOR® Technology, Inc.
608 State Street South, Suite 100
Kirkland, WA 98033
(800) 447-5848 Toll Free
(425) 284-3320 Local
(425) 284-3321 FAX
www.accortechology.com

Customer Service
Manufacturing
3310 5th Street SE
East Wenatchee, WA 98802
(800) 447-5848 Toll Free
(509) 888-2233 Local
(509) 888-0554 FAX
email: info@accortechology.com

Certification listings in U.S. and Canada to
ASME A112.18.1/CSA B125 and ASME A112.18.6

