

TRENCH TOUGH PLUS™

MOLDED PVC FITTINGS

TRENCH TOUGH PLUS™

SDR35 GASKETED SEWER FITTINGS

- Ideal for use in wastewater, stormwater and industrial waste applications.
- Reinforced to SDR26 thickness at key locations such as the branches of tees and wyes for optimal long-term performance.
- Joint withstands 15 psi hydrostatic pressure and a -10.8 psi vacuum pressure.
- Leak-proof at 5° joint deflection and 5% ring deflection.

**Injection
Molded**
4" – 18"

Fabricated
18" – 42"



NEW MOLDED GASKETED SDR35 SEWER FITTINGS

Product	Size (inches)	Size (mm)	Old Part #	NEW Part #
45° WYE (GxGxG)	15 x 10	375 x 250	043317	143317
	15 x 12	375 x 300	043318	143318
	15	375	043310	143310
	18 x 4	450 x 100	043904	143904
	18 x 6	450 x 150	043903	143903
45° ELBOW (GxG)	15	375	043515	143515
45° ELBOW (SxG)	15	375	043951	143951
REPAIR COUPLING WITHOUT PIPE STOP (GxG)	12	300	043631	143631
EXTENDED BUSHING (SxG) - Concentric	12 x 4	300 x 100	043697	143697
	12 x 6	300 x 150	043617	143617
	12 x 8	300 x 200	043616	143616
	12 x 10	300 x 250	043623	143623
INCREASER COUPLING (GxG)	12 x 4	300 x 100	043798	143798
	12 x 6	300 x 150	043530	143530
	12 x 8	300 x 200	043532	143532
	12 x 10	300 x 250	043520	143520

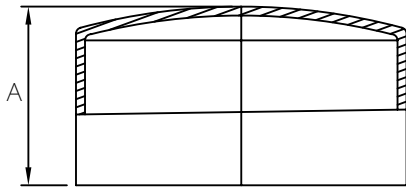


MULTI FITTINGS

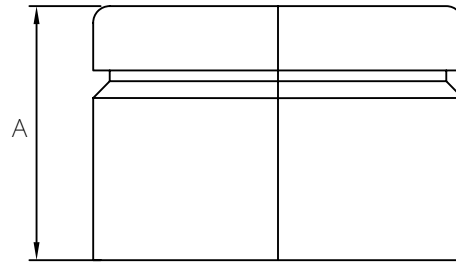
LAYING LENGTH

ISSUE DATE: NOV 15/17
SUPERCEDES: MAY 10/05

CAP



INJECTION MOLDED FITTING (M)



FABRICATED FITTING (F)

	SIZE	PART NUMBER	A REF
M	3	040986	1.625
M	4	040959	2.125
M	6	040988	3.625
M	8	040990	5.500
M	10	040995	5.500
M	12	040996	6.500
M	15	040997	8.000
F	18	040998	15.000
F	21	040985	18.500
F	24	040917	19.000