



## Professional Achiever® Atmospheric gas water heaters are engineered for more hot water at a low operating cost

### Efficiency

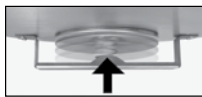
- .58 - .66 UEF
- More hot water at a low operating cost

### Performance

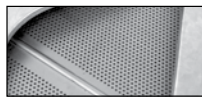
- FHR: 51 - 87 gallons
- Recovery: 30.3 to 40.4 GPH at a 90° F rise, depending on model

### Guardian System™ & Sensor

- Exclusive air/fuel shut-off device
- Maintenance free – no filter to clean
- Protective control system that disables the heater in the presence of flammable vapor accumulation



Combustion Shut-off System



Flame Arrestor Plate



Maintenance Free

### Low Emissions

- Eco-friendly burner, low NOx design
- Meets 40 ng/J NOx requirements

### Longer Life

- Premium grade anode rod provides long-lasting tank protection

### Altitude Certification

- All models certified up to 5,999 feet above sea level, some certified up to 10,000 feet. Consult factory for specifications

### Plus...

- Easy to light – no matches required
- EverKleen® patented system fights sediment build-up
- Exclusive Ruudglas® tank lining resists corrosion and prolongs tank life
- Enhanced flow brass drain valve
- Temperature and pressure relief valve included
- Factory installed temperature and pressure relief valve on select models
- Low lead compliant
- Standard replacement parts

### Warranty

- 6-Year limited tank and parts warranty\*
- With ProtectionPlus® the 6-year limited tank warranty becomes 10-year

\*See Residential Warranty Certificate for complete information

Units meet or exceed ANSI requirements and have been tested according to D.O.E. procedures. Units meet or exceed the energy efficiency requirements of NAECA, ASHRAE standard 90, ICC Code and all state energy efficiency performance criteria.



## Professional Achiever Atmospheric

29, 30, 40 and  
50-Gallon Capacities  
Up to 40,000 BTU/h  
Natural and LP Gas



† LEED Point = 1

See specifications chart on back.



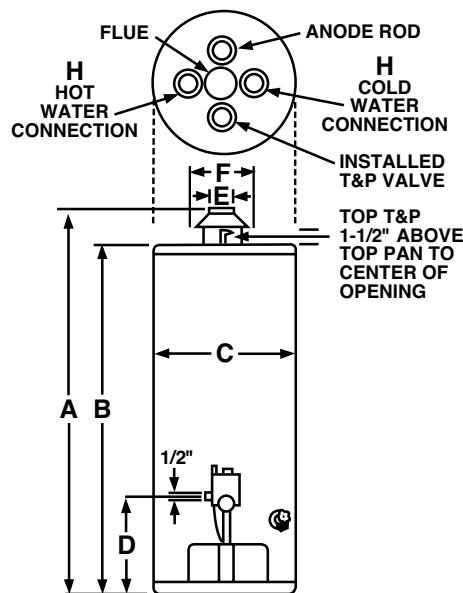
### Specifications

DESCRIPTION				FEATURES						ROUGHING IN DIMENSIONS (SHOWN IN INCHES)										ENERGY INFO.	
TYPE	NOMINAL GALLON CAPACITY	RATED GALLON CAPACITY	MODEL NUMBER	GAS INPUT IN THOUS. BTU/H		RECOVERY IN G.P.H. 90° F RISE		FIRST HOUR RATING (GALLONS)		HEIGHT TO VENT A	TANK HEIGHT B	DIAM. C	HT. TO GAS CONN. D	VENT SIZE E	WATER CONN. CENTER F	HT. TO SIDE T&P VALVE G	WATER CONN. SIZE H	SHIP WT. (LBS)	UNIFORM ENERGY FACTOR (UEF)		
				NAT.	LP	NAT.	LP	NAT.	LP												
Tall	29	28	PROG29-32N RU63	32	-	32.3	-	63	-	59-3/4	56-7/8	16-1/2	14-1/4	3 or 4	8	50-3/4	3/4	110	0.60		
Tall	29	28	PROG29-30P RU63	-	30	-	30.3	-	63	59-3/4	56-7/8	16-1/2	14-1/4	3 or 4	8	50-3/4	3/4	110	0.60		
Tall	40	38	PROG40-36N RU62 <sup>†</sup>	36	-	36.4	-	64	-	61-1/2	58-1/2	19	14-1/4	3 or 4	8	52-1/4	3/4	127	0.58		
Tall	40	38	PROG40-38N RU62 <sup>†</sup>	38	-	38.4	-	64	-	61-1/2	58-1/2	19	14-1/4	3 or 4	8	52-1/4	3/4	127	0.58		
Tall	40	38	PROG40-40N RU62 <sup>†</sup>	40	-	40.4	-	84	-	63-1/4	60	19-1/2	14	3 or 4	8	53-1/2	3/4	135	0.66		
Tall	40	38	PROG40-36P RU62 <sup>†</sup>	-	36	-	36.3	-	84	63-1/4	60	19-1/2	14	3 or 4	8	53-1/2	3/4	135	0.66		
Tall	40	38	PROG40-32P RU62 <sup>†</sup>	-	32	-	32.3	-	67	61-1/2	58-1/2	18-1/2	14-1/4	3 or 4	8	52-1/4	3/4	125	0.59		
Tall	50	48	PROG50-40N RU62 <sup>†</sup>	40	-	40.4	-	76	-	62-1/2	59-1/4	21-1/2	14-1/2	3 or 4	8	52-1/2	3/4	165	0.65		
Tall	50	48	PROG50-36P RU62 <sup>†</sup>	-	36	-	36.4	-	76	62-1/2	59-1/4	21-1/2	14-1/2	3 or 4	8	52-1/2	3/4	165	0.65		
Tall	50	48	PROG50-38N RU60 <sup>†</sup>	38	-	38.4	-	85	-	61-1/4	58-3/8	20-1/2	14-1/4	3 or 4	8	51-3/8	3/4	150	0.64		
Tall	50	48	PROG50-36P RU60 <sup>†</sup>	-	36	-	36.4	-	85	61-1/4	58-3/8	20-1/2	14-1/4	3 or 4	8	51-3/8	3/4	150	0.64		
Short	30	29	PROG30S-30N RU63	30	-	30.3	-	51	-	49-7/8	47	19-3/4	14-1/4	3 or 4	8	40-3/8	3/4	112	0.60		
Short	40	38	PROG40S-40N RU62 <sup>†</sup>	40	-	40.4	-	66	-	53-7/8	50-1/2	23	14-1/2	3	8	44	3/4	135	0.58		
Short	40	38	PROG40S-36P RU62 <sup>†</sup>	-	36	-	36.4	-	66	53-7/8	50-1/2	23	14-1/2	3	8	44	3/4	135	0.58		
Short	40	39	PROG40S-38N RU62 <sup>†</sup>	38	-	38.4	-	65	-	53-1/4	50-1/4	21-3/8	14-1/4	3 or 4	8	44	3/4	125	0.58		
Short	40	39	PROG40S-35P RU62 <sup>†</sup>	-	35	-	35.4	-	65	53-1/4	50-1/4	21-3/8	14-1/4	3 or 4	8	44	3/4	125	0.58		
Short	40	38	PROG40S-34N RU62	34	-	34.3	-	64	-	52-3/8	49-1/8	21	14	3 or 4	8	42-3/4	3/4	120	0.59		
Short	40	38	PROG40S-31P RU62	-	31	-	31.3	-	65	52-3/8	49-1/8	21	14	3 or 4	8	42-3/4	3/4	120	0.59		
Short	50	48	PROG50S-40N RU61 <sup>†</sup>	40	-	40.4	-	87	-	54-1/4	51-1/8	23-3/4	14-1/4	3 or 4	8	44	3/4	186	0.63		
Short	50	48	PROG50S-36P RU61 <sup>†</sup>	-	36	-	36.4	-	87	54-1/4	51-1/8	23-3/4	14-1/4	3 or 4	8	44	3/4	186	0.63		
<b>Models with Installed Top T&amp;P Valve</b>																					
Tall	40	38	PROG40-38N RU62TT	38	-	38.4	-	64	-	61-1/2	58-1/2	19	14-1/4	3 or 4	8	-	3/4	127	0.58		
Tall	40	38	PROG40-40N RU62TT	40	-	40.4	-	64	-	63-1/4	60	19-1/2	14	3 or 4	8	-	3/4	135	0.66		
Tall	50	48	PROG50-40N RU62TT	40	-	40.4	-	85	-	62-1/2	59-1/4	21-1/2	14-1/2	3 or 4	8	-	3/4	165	0.65		
Tall	50	48	PROG50-38N RU60TT	38	-	38.4	-	84	-	61-1/4	58-3/8	20-1/2	14-1/4	3 or 4	8	-	3/4	150	0.64		

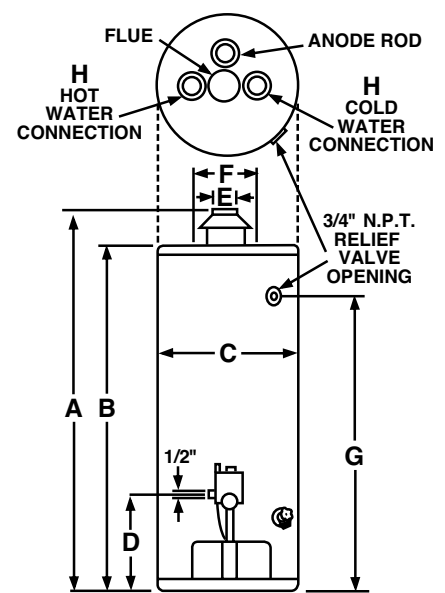
Uniform Energy Factor and rated gallon capacity based on Department of Energy (DOE) requirements.



<sup>†</sup>LEED Point = 1



Top T&P models



In keeping with its policy of continuous progress and product improvement, Ruud reserves the right to make changes without notice.