

FDC PLUG AND CHAIN

Figure 1203



NFP120320

FEATURES & BENEFITS

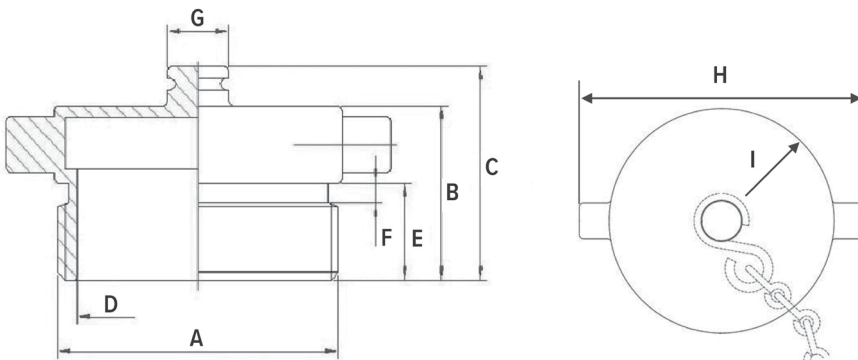
- Size: 2-1/2" MNST
- Universal pin lug design
- Protects threads and keeps out unwanted debris
- Includes a brass chain and steel S-Hook

INSTALLATION

Prior to installation, make sure all threads are clean and free of debris and that the swivel is complete with a swivel gasket to ensure water-tight seal. Use a two-pin lug style hydrant wrench to tighten.



CAUTION: DO NOT OVERTIGHTEN THREADS. OVERTIGHTENING MAY CAUSE VALVE FAILURE.



MATERIAL CHART

PART NAME	MATERIAL
Body	Brass C38500 Modi.
Chain	Brass
S-Hook	Steel

DIMENSION (INCHES)

PART #	SIZE (A)	B	C	D	E	F	G	H	I
NFP120320	2-1/2"	1.73	2.13	Ø2.64	0.96	0.2	Ø0.67	4.21	Ø3.07