

GATE HOSE VALVE



Figure 1202



NFP120210

FEATURES & BENEFITS

- Size: 2-1/2" FNPT X MNST
- Connection Type: Thread
- Body Material: Brass
- Finish: Rough brass
- Hand Wheel: Red aluminum
- Max Pressure: 300 psi

TECHNICAL DATA

- Complies with UL 668 and FM 1522

INSTALLATION

Use an approved thread sealant on the threads that the hose valve will be installed on. DO NOT OVER TIGHTEN. Over-tightening may cause cracks or deformities in the valve body which could lead to failure.

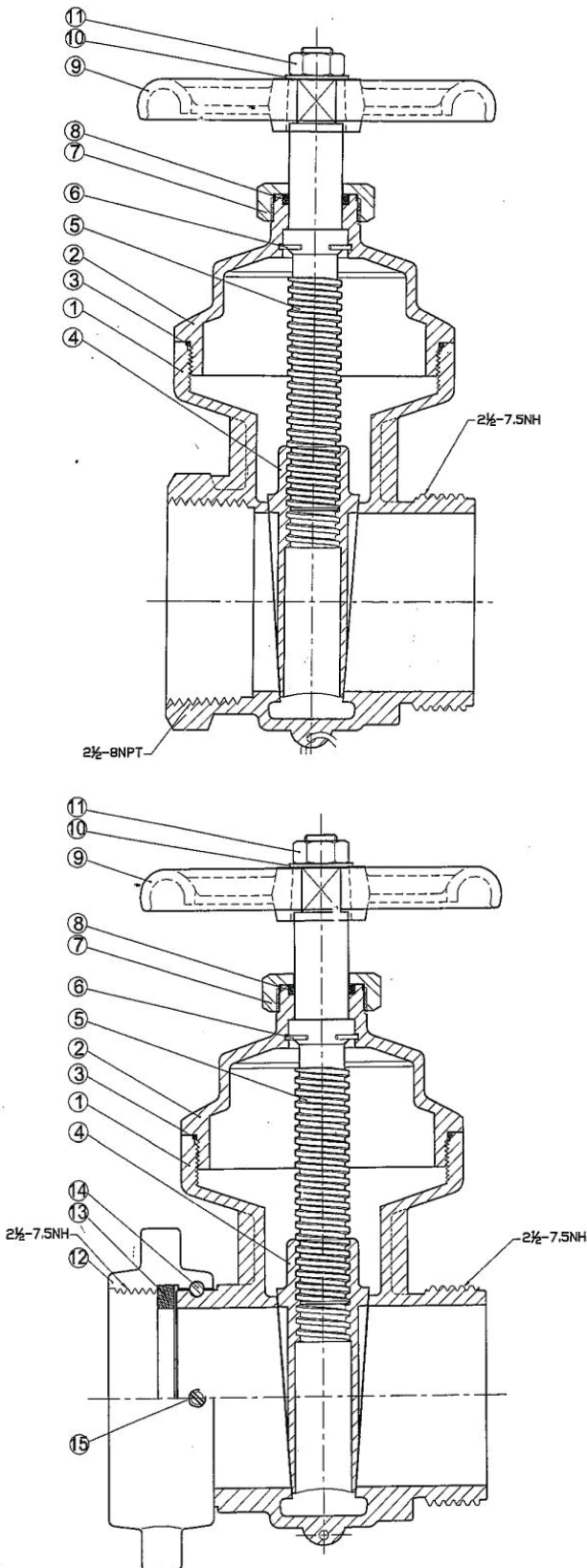
DIMENSION (INCHES)

PART #	SIZE	THREADS
NFP120210	2-1/2"	FNPT X MNST
NFP120211	2-1/2"	SWVL FNPT X MNST

*Not for use in potable systems

GATE HOSE VALVE

Figure 1202



MATERIAL CHART

NO.	PART NAME	MATERIAL
1	Body	ASTM B584 C85700
2	Bonnet	ASTM B124 C37700
3	O-Ring	NBR
4	Disc	ASTM B584 C85700
5	Stem	ASTM B21 C48200
6	Spring Washer	304 SS
7	Packing Nut	ASTM B16 C36000
8	O-Ring	NBR
9	Hand Wheel	Aluminum
10	Wheel Washer	Steel
11	Wheel Nut	ASTM B16 36000

MATERIAL CHART

NO.	PART NAME	MATERIAL
1	Body	ASTM B584 C85700
2	Bonnet	ASTM B124 C37700
3	O-Ring	NBR
4	Disc	ASTM B584 C85700
5	Stem	ASTM B21 C48200
6	Spring Washer	304 SS
7	Packing Nut	ASTM B16 C36000
8	O-Ring	NBR
9	Hand Wheel	Aluminum
10	Wheel Washer	Steel
11	Wheel Nut	ASTM B16 36000
12	Hose Coupling	ASTM B584 C85700
13	Rubber Facing	Vulcanized Rubber
14	Ball Bearings	304 SS
15	Screw	ASTM B16 C36000