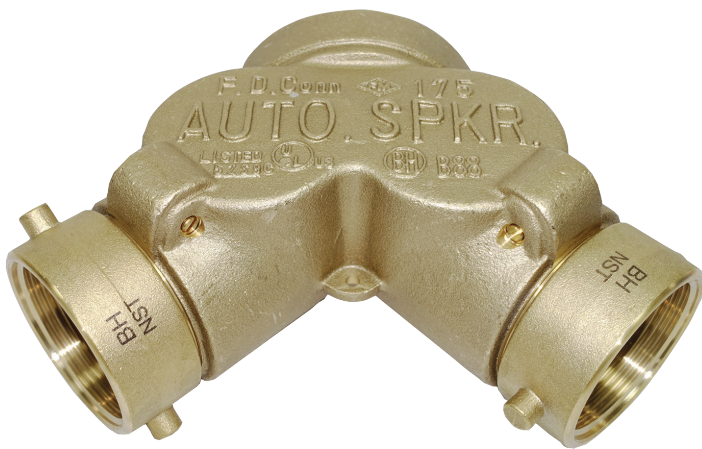


FIRE DEPARTMENT CONNECTION



Figure 1401



NFP140116

FEATURES & BENEFITS

- Size: 4" x 2-1/2" x 2-1/2"
- Configuration: Straight
- Double clapper design
- Max Pressure: 175 psi
- Body: Brass
- Finish: Rough brass

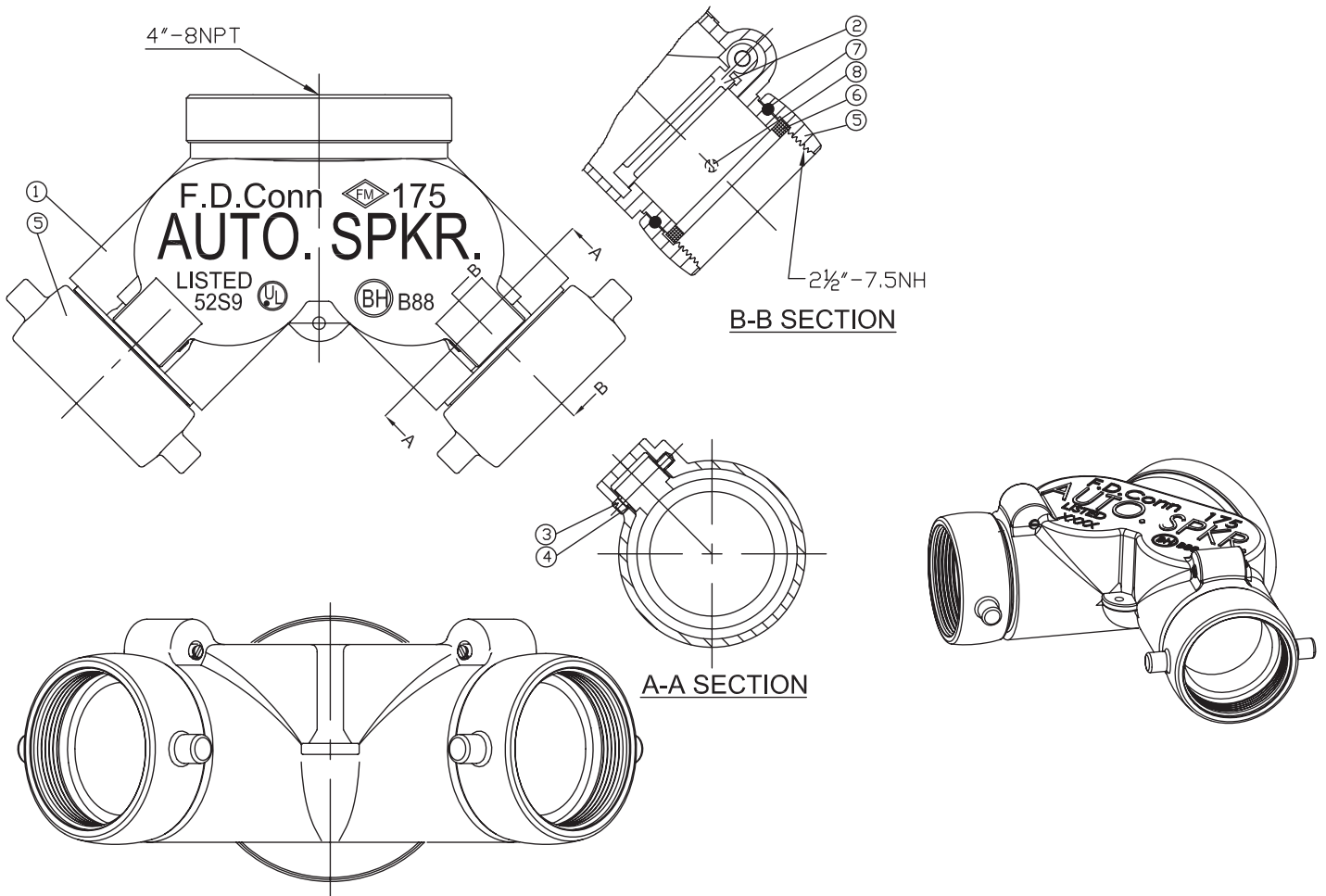
TECHNICAL DATA

- Complies with UL 405 and FM 1530

INSTALLATION

Before installation, make sure the proper identification sign has been installed on the receiving nipple (if required). Apply male threads of the receiving nipple with a suitable pipe thread sealant. Tighten FDC one full turn past hand tight and ensure the FDC is aligned according to requirements. **DO NOT OVER TIGHTEN.** Over-tightening may cause cracks or deformities in the valve body which could lead to failure.

*Not for use in potable systems



DIMENSION (INCHES)

PART #	CONFIGURATION	THREAD
NFP140116	Straight	4" MNPT x 2-1/2" FNST (2)

MATERIAL CHART

NO.	PART NAME	MATERIAL
1	Body	ASTM B584 C85700
2	Clapper	ASTM B584 C85700
3	Hinge Pin	ASTM B16 C36000
4	O-Ring	Rubber
5	Hose Coupling	ASTM B584 C85700
6	Rubber Facing	Vulcanized Rubber
7	Ball Bearings	304 SS
8	Screw	ASTM B16 C36000