

GROOVED FIRE DEPARTMENT CONNECTION



Figure 1401



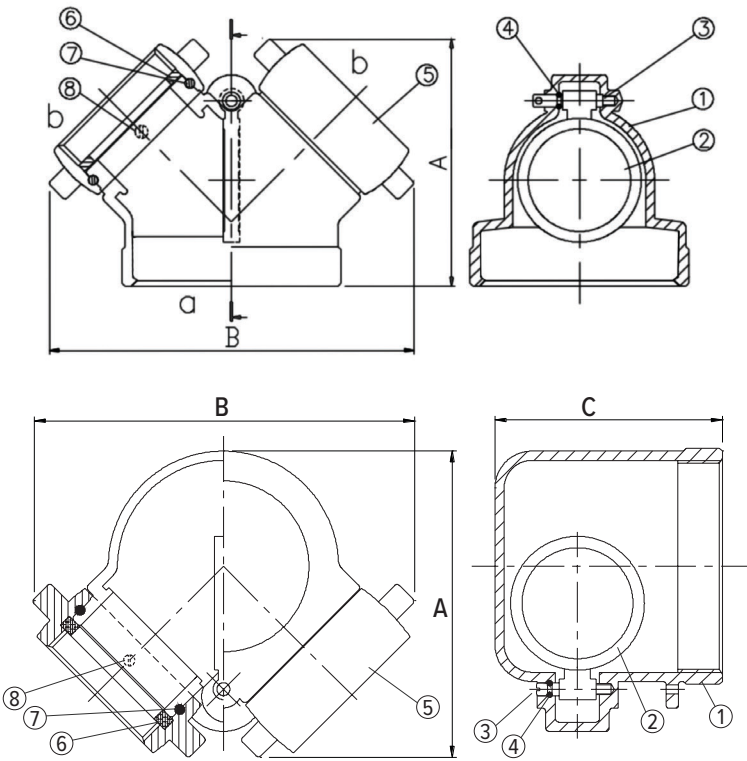
NFP140108/NFP140109

FEATURES & BENEFITS

- Size: 4" Groove outlet x (2) 2-1/2" NST Inlets
- Available in straight and 90 degree pattern
- Finish: Rough brass
- Lettering: AUTO SPKR
- Pin lug designs on inlets
- Single clapper

INSTALLATION

Ensure identification sign has been installed on the nipple prior to installation. Make sure FDC is aligned according to requirements.



MATERIAL CHART

NO.	DESCRIPTION	MATERIAL
1	Body	Brass C85700
2	Clapper	Brass C85700
3	Hinge Pin	Brass C36000
4	O-Ring	Vulcanized Rubber
5	Hose Coupling	Brass C85700
7	Ball Bearing	SS304
8	Screw	Brass C36000

END CONNECTIONS						
PART #	CONFIGURATION	a	b	A	B	C
NFP140108	Straight	4" GRV	2-1/2" FNST	5.516	8.078	—
NFP140109	90	4" GRV	2-1/2" FNST	6.3125	7.6875	4.75

*Not for use in potable systems