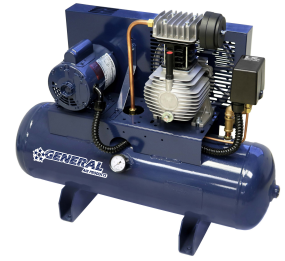




**AIR PRODUCTS**

## FIRE PROTECTION AIR COMPRESSOR INSTALLATION CHECKLIST

**FOR SUPPORT CALL: 1-800-345-8207**



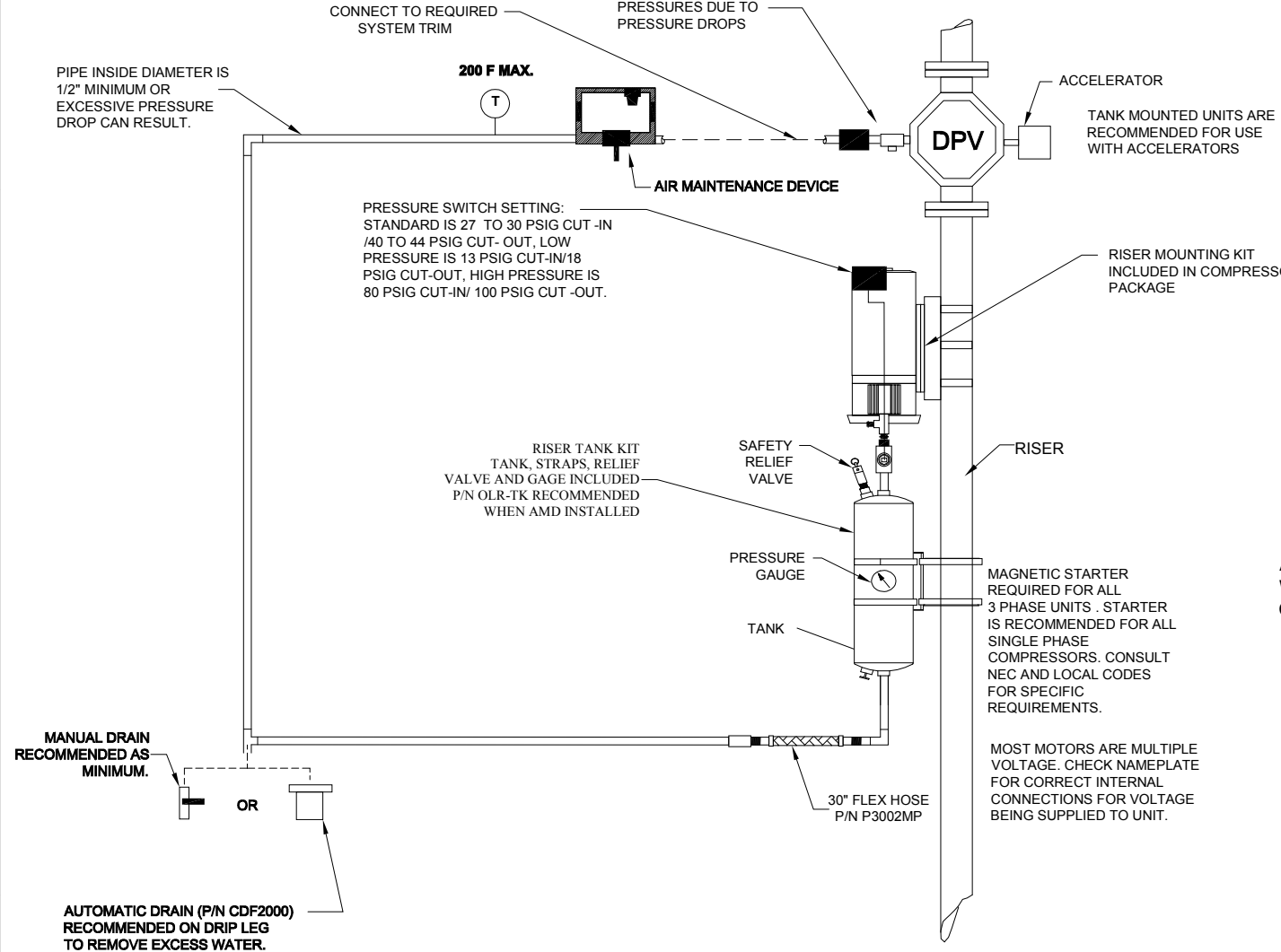
It is **HIGHLY** recommended that the fire protection air compressor is mechanically installed at the same time the electrician is available to wire and run the air compressor.

1.	Visually inspect the fire protection air compressor to ensure there is no damage from shipment.	<input type="checkbox"/>
2.	Verify the correct model number, electrical phase and voltage.	<input type="checkbox"/>
3.	Make sure that the electrical circuit complies with all local/National codes and is sized to the requirements of the model being installed.	<input type="checkbox"/>
4.	Select an installation location with-in 6 feet of the electrical disconnect switch that the unit will be wired to.	<input type="checkbox"/>
5.	Anchor the compressor securely – tank mounted units should be bolted to the floor, riser mounting units attached to the riser with supplied bracket as per instructions or securely mounted to the wall or floor.	<input type="checkbox"/>
6.	Check oil level before operation. All lubricated compressors have an oil site glass. Oil should be filled until the sight glass is 1/2 to 2/3 full.	<input type="checkbox"/>
7.	Connect fire protection air compressor to the airline of the dry pipe valve. (It is recommended that the fire protection air compressor is connected to the supply line with a stainless steel flex hose - rubber hoses are NOT recommended.)	<input type="checkbox"/>
8.	Ensure that power to the electrical connections is shut OFF at the main power panel.	<input type="checkbox"/>
9.	Ensure that the motor is internally wired for the desired / available voltage.	<input type="checkbox"/>
10.	Connect wires from the motor to the pressure switch for single phase units unless already factory connected. (Most three phase and single phase motors over 1½ Hp require a line starter with overload protection.)	<input type="checkbox"/>
11.	Connect power wires from the disconnect to the line contacts of the pressure switch or line starter.	<input type="checkbox"/>
12.	Turn on power. If system pressure is below the cut-in pressure of the pressure switch, the motor will turn on.	<input type="checkbox"/>
13.	Fill system with air maintenance device in fill mode, system should fill within 30 minutes. Ensure any additional isolation valves on the system are open at this time	<input type="checkbox"/>
14.	Check voltage in static condition, as it starts and as it fills the tank, if it drops 10% below the name plate rating there is a voltage problem. (208v has already been calculated in this equation and cannot drop 10%.)	<input type="checkbox"/>
15.	When tank or air line is full check for leaks	<input type="checkbox"/>
16.	When using an air maintenance device with a regulator the cut in pressure of the compressor should be 5-10 psi higher than the regulator setting.	<input type="checkbox"/>
17.	Oil Less Compressors are normally set around: 30 psi cut in and 44 psi cut out. Lubricated Compressors are normally set around: 45 psi cut in and 60 psi cut out. If different pressure is required adjustments should be made while compressor is isolated from the system.	<input type="checkbox"/>
18.	Put air maintenance devices in maintenance mode. (If your compressor meets specification 8.2.6.6.2 in NFPA 13_2019 no air maintenance is required.)	<input type="checkbox"/>

**Adjusting the pressure switch:** The differential is already factory set as close as possible, so the differential can only be increased - NEVER decrease. It is best practice to only make adjustments with the main calibration screw which adjusts both the cut in and cut out.

**CALL TECH SUPPORT FOR ASSISTANCE 1-800-345-8207**

REVISIONS				
ZONE	REV	DESCRIPTION	DATE	APPROVED
	1	ECN #0146: FLEX HOSE PART NUMBER	2/5/15	RM



PIPE INSIDE DIAMETER IS 1/2" MINIMUM OR EXCESSIVE PRESSURE DROP CAN RESULT.

200 F MAX.

MULTIPLE CHECK VALVES IN FEED LINES CAN RESULT IN LOWER SYSTEM PRESSURES DUE TO PRESSURE DROPS

CONNECT TO REQUIRED SYSTEM TRIM

AIR MAINTENANCE DEVICE

PRESSURE SWITCH SETTING:  
STANDARD IS 27 TO 30 PSIG CUT-IN /40 TO 44 PSIG CUT-OUT, LOW PRESSURE IS 13 PSIG CUT-IN/18 PSIG CUT-OUT, HIGH PRESSURE IS 80 PSIG CUT-IN/ 100 PSIG CUT-OUT.

**WARNING!**  
DO NOT INSTALL IN AREAS EXPOSED TO TEMPERATURES BELOW 40 DEGREES F OR AREAS EXPOSED TO WEATHER. CONSULT FACTORY.

ALL PIPING AND WIRING TO BE IN ACCORDANCE WITH APPLICABLE STATE, LOCAL AND NATIONAL CODES & SHOULD BE APPROVED BY AHJ

MAGNETIC STARTER REQUIRED FOR ALL 3 PHASE UNITS. STARTER IS RECOMMENDED FOR ALL SINGLE PHASE COMPRESSORS. CONSULT NEC AND LOCAL CODES FOR SPECIFIC REQUIREMENTS.

MOST MOTORS ARE MULTIPLE VOLTAGE. CHECK NAMEPLATE FOR CORRECT INTERNAL CONNECTIONS FOR VOLTAGE BEING SUPPLIED TO UNIT.

RISER TANK KIT TANK, STRAPS, RELIEF VALVE AND GAGE INCLUDED P/N OLR-TK RECOMMENDED WHEN AMD INSTALLED

MANUAL DRAIN RECOMMENDED AS MINIMUM.

AUTOMATIC DRAIN (P/N GDF2000) RECOMMENDED ON DRIP LEG TO REMOVE EXCESS WATER.

NOTE:  
PART NUMBERS LISTED ARE FOR ACCESSORY ITEMS RECOMMENDED FOR COMPLETE INSTALLATION - CONSULT YOUR LOCAL DISTRIBUTOR FOR AVAILABILITY

ACAD DRAWINGS/COMPRESSORS/OILLESS RISER MOUNTING-G-211073 REV 1 OIL LESS COMPRESSOR WITH RISER TANK INSTR

UNLESS OTHERWISE SPECIFIED DIMENSIONS ARE IN INCHES TOLERANCES ARE:  
FRACTIONS DECIMALS ANGLES  
±1/4 .XX± ±

THIS DRAWING AND ALL OF ITS CONTENTS ARE THE SOLE PROPERTY OF GENERAL AIR PRODUCTS, INC. DETAILS MAY CHANGE WITHOUT NOTICE. THE CONTENTS OF THIS DRAWING MAY NOT BE REPRODUCED OR INCORPORATED IN WHOLE OR IN PART IN ANY EQUIPMENT, NOR THE MANUFACTURE OF ANY PARTS, WITHOUT WRITTEN CONSENT OF GENERAL AIR PRODUCTS, INCORPORATED.



APPROVALS	DATE	TITLE
DRAWN EJR	03-28-11	INSTALLATION INSTRUCTIONS RISER MOUNT OIL-LESS COMPRESSORS WITH RISER TANK KIT
CHECKED DPH	03-28-11	
SCALE SIZE		
SHEET 1 OF 1	C	DWG NO. G-211073 REV 1

REVISIONS				
ZONE	REV	DESCRIPTION	DATE	APPROVED
	1	ECN #0146: FLEX HOSE PART NUMBER	2/5/15	RM

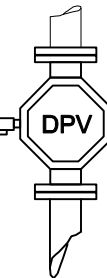
PIPE SIZE 1/2" MINIMUM,  
LARGER IF REQUIRED  
BY CODE

200° F MAX

MULTIPLE CHECK  
VALVES IN FEED  
LINES CAN RESULT  
IN LOWER SYSTEM  
PRESSURES DUE TO  
PRESSURE DROPS

CONNECT TO REQUIRED  
SYSTEM TRIM

ACCELERATOR  
TANK MOUNTED UNITS ARE  
RECOMMENDED FOR USE  
WITH ACCELERATORS



AIR MAINTENANCE DEVICE

PRESSURE SWITCH SETTING:  
STANDARD IS 27 TO 30 PSIG CUT-IN  
/40 TO 44 PSIG CUT-OUT, LOW  
PRESSURE IS 13 PSIG CUT-IN/18  
PSIG CUT-OUT, HIGH PRESSURE IS  
80 PSIG CUT-IN/100 PSIG CUT-OUT.

PRESSURE SWITCH MUST  
BE WIRED IN CIRCUIT TO  
TO CONTROL COMPRESSOR

ALL PIPING AND WIRING  
TO BE IN ACCORDANCE WITH  
APPLICABLE STATE, LOCAL  
AND NATIONAL CODES &  
SHOULD BE APPROVED BY AHJ

MOST MOTORS ARE MULTIPLE  
VOLTAGE. CHECK NAMEPLATE  
FOR CORRECT INTERNAL  
CONNECTIONS FOR VOLTAGE  
BEING SUPPLIED TO UNIT.

MAGNETIC STARTER  
REQUIRED FOR ALL  
3 PHASE UNITS. STARTER  
IS RECOMMENDED FOR ALL  
SINGLE PHASE  
COMPRESSORS. CONSULT  
NEC AND LOCAL CODES  
FOR SPECIFIC  
REQUIREMENTS.

**WARNING!**  
DO NOT INSTALL IN  
AREAS EXPOSED TO  
TEMPERATURES BELOW  
40 DEGREES F OR AREAS  
EXPOSED TO WEATHER.  
CONSULT FACTORY.

30" FLEX HOSE  
P/N P3002MP



MANUAL DRAIN  
RECOMMENDED AS  
MINIMUM.



OR



AUTOMATIC DRAIN (P/N CDF2000)  
RECOMMENDED ON DRIP LEG  
TO REMOVE EXCESS WATER.

MANUAL DRAIN STANDARD.  
AUTOMATIC DRAIN RECOMMENDED (P/N APC51-02-000)

VIBRATION ISOLATORS  
P/N KVP 4X4

NOTE:  
PART NUMBERS LISTED ARE FOR ACCESSORY ITEMS RECOMMENDED FOR COMPLETE INSTALLATION-  
CONSULT YOUR LOCAL DISTRIBUTOR FOR AVAILABILITY.

ACAD DRAWINGS\COMPRESSORS\oil less tk mtd\G-211086 REV 1 Installation Instructions Tank  
Mtd.OL Compressors

THIS DRAWING AND ALL OF ITS CONTENTS  
ARE THE SOLE PROPERTY OF GENERAL AIR  
PRODUCTS, INC. DETAILS MAY CHANGE WITHOUT  
NOTICE. THE CONTENTS OF THIS DRAWING  
MAY NOT BE REPRODUCED OR INCORPORATED  
IN WHOLE OR IN PART IN ANY EQUIPMENT,  
NOR THE MANUFACTURE OF ANY PARTS,  
WITHOUT WRITTEN CONSENT OF GENERAL AIR  
PRODUCTS, INCORPORATED.

UNLESS OTHERWISE SPECIFIED  
DIMENSIONS ARE IN INCHES  
TOLERANCES ARE:  
FRACTIONS DECIMALS ANGLES  
±1/4 .XX± ±

		TITLE	
		INSTALLATION INSTRUCTIONS TANK MOUNTED OILLESS COMPRESSORS	
APPROVALS	DATE	DWG NO. G-211086 REV 1	SHEET 1 OF 1
DRAWN EJR	04-04-11		
CHECKED DPH	04-04-11		
SCALE	SIZE		

ALL PIPING AND WIRING TO BE IN ACCORDANCE WITH APPLICABLE STATE, LOCAL AND NATIONAL CODES & SHOULD BE APPROVED BY AHJ

### TANK MOUNTED LUBRICATED COMPRESSORS INSTALLATION INSTRUCTIONS



MULTIPLE CHECK VALVES IN FEED LINES CAN RESULT IN LOWER SYSTEM PRESSURES DUE TO PRESSURE DROPS

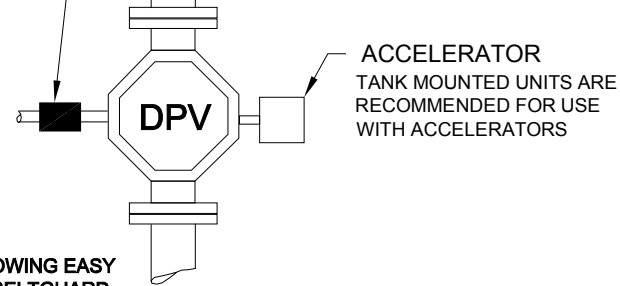
IF SYSTEM IS FEEDING FREEZER ROOM, CONSULT FACTORY FOR DRY AIR PAC INFORMATION.

CONNECT TO REQUIRED SYSTEM TRIM

200 F MAX.



P/N AMD - 1  
AIR MAINTENANCE DEVICE



ACCELERATOR  
TANK MOUNTED UNITS ARE RECOMMENDED FOR USE WITH ACCELERATORS

INSTALL ALLOWING EASY ACCESS TO BELTGUARD FOR MAINTENANCE CHECKS  
12" CLEARANCE IN FRONT AND BEHIND BELTGUARD REQUIRED

MOST MOTORS ARE MULTIPLE VOLTAGE. CHECK NAMEPLATE AND VERIFY INTERNAL CONNECTIONS FOR VOLTAGE BEING SUPPLIED TO UNIT.

MAGNETIC STARTER RECOMMENDED (CONSULT APPLICABLE CODES)

NOTE: UNITS ARE SHIPPED WITH OIL INSTALLED  
CHECK OIL (P/N APC01Q) LEVEL BEFORE OPERATING

1/2" MINIMUM, LARGER IF REQUIRED BY CODE

30" FLEX HOSE SUPPLIED WITH COMPRESSOR

PRESSURE SWITCH MUST BE WIRED IN CIRCUIT TO CONTROL COMPRESSOR.

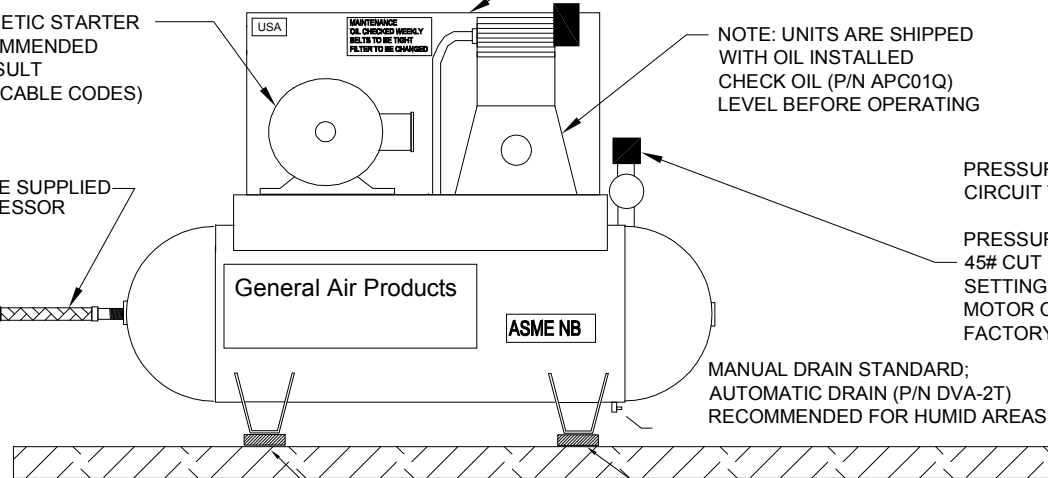
PRESSURE SWITCH IS FACTORY SET AT 45# CUT IN 60# CUT OUT; HIGHER PRESSURE SETTINGS MAY REQUIRE A LARGER MOTOR ON THE COMPRESSOR, CONSULT FACTORY FOR DETAILS.

MANUAL DRAIN RECOMMENDED AS MINIMUM.

OR

AUTOMATIC DRAIN (P/N FD-1) RECOMMENDED ON DRIP LEG TO REMOVE EXCESS WATER.

MANUAL DRAIN STANDARD; AUTOMATIC DRAIN (P/N DVA-2T) RECOMMENDED FOR HUMID AREAS.



VIBRATION ISOLATORS SUPPLIED W/ COMPRESSOR

PART NUMBERS LISTED ARE FOR ACCESSORY ITEMS RECOMMENDED FOR COMPLETE INSTALLATION - CONSULT YOUR LOCAL DISTRIBUTOR FOR AVAILABILITY

**WARNING!**  
DO NOT INSTALL IN AREAS EXPOSED TO TEMPERATURES BELOW 40 DEGREES F. OR AREAS EXPOSED TO WEATHER. CONSULT FACTORY FOR WEATHERPROOF OPTIONS.