



PIONEER INDUSTRIES, INC.
3325 S. Garfield Ave.
Commerce, CA 90040
(800) 338-9468
www.pioneerind.com

INSTALLATION

Tools:



Adjustable Wrench



Plumbers Putty

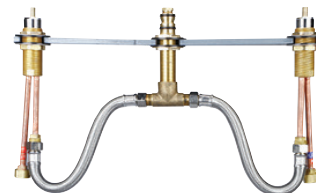


Teflon Tape



Rags

Model Number: 4300B



Warnings and Notes:

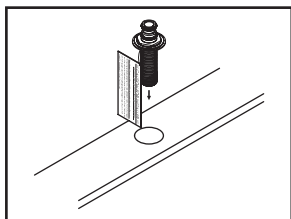
Check with local plumbing code requirements before installation.

This product should be installed by a local listed plumber.

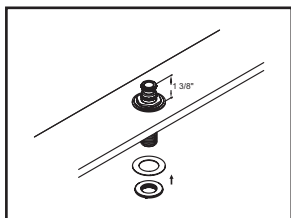
Do not use plumbers putty on threads.

Installation Steps:

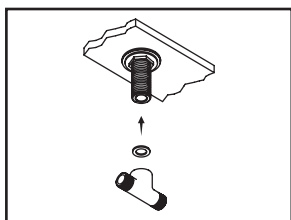
Two Handle Roman Tub Valve Set



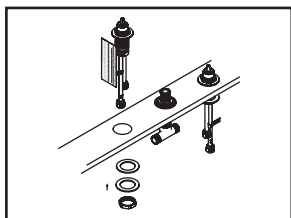
(1) Shut off both water supply lines. Remove test plug from the top of the spout shank. Drop spout shank through spout mounting hole.



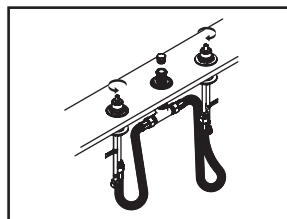
(2) Adjust locknut so that the top of the spout shank is 1-3/8" above finished surface. Slide rubber washer and then securely tighten second locknut from the bottom of the spout shank.



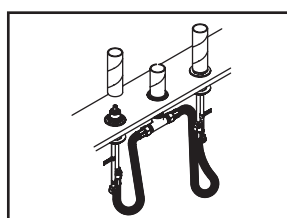
(3) Make sure rubber washer is inside of the "T" connector, attach and tighten "T" connector to the bottom of the spout shank.



(4) Insert valve through mounting hole. Adjust locknut so that the tip of stem is 1-3/4" above finished surface, adjust outlet of the valve to face center to ensure handle operates in proper direction, slide rubber washer, steel washer and tighten locknut from the bottom of the valve. Install the other valve using the same procedure.



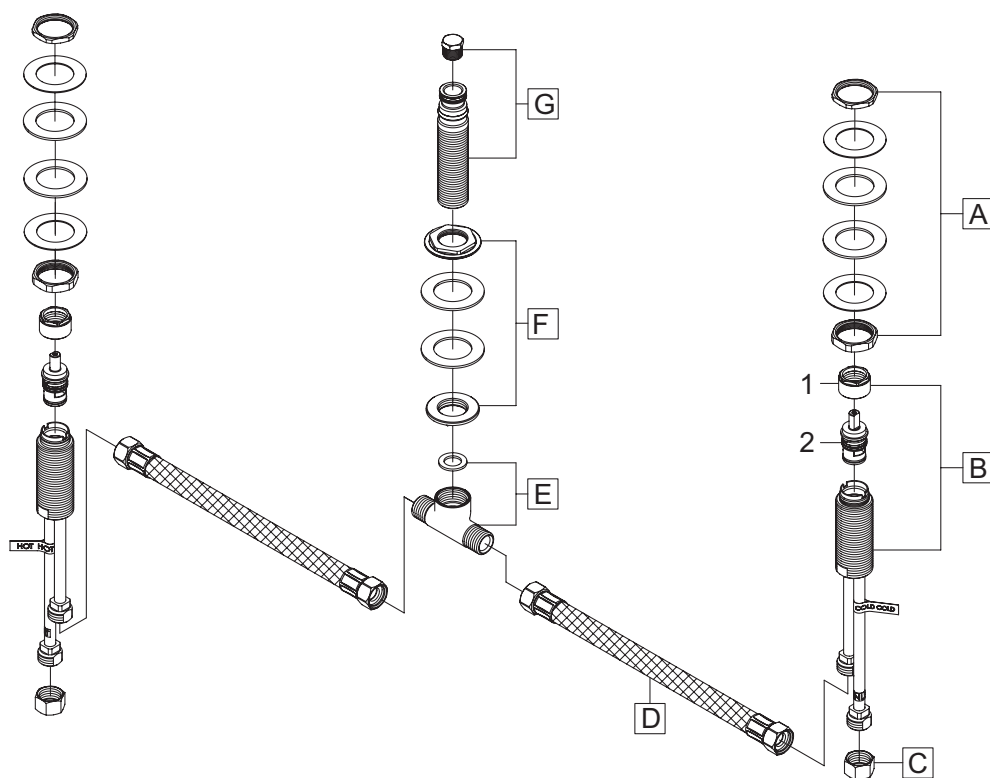
(5) Attach both flex connector hoses to outlets of the valves and "T" connector. Connect water supply lines to inlets of the valves. Apply Teflon tape on thread area of test plug, tighten test plug back to the top of the shank. Turn on water supply lines and check for any leaks.



(6) Install mud guard on the top of the spout shank and valves.

Exploded Drawing :

	ITEM #	DESCRIPTION
A	X-5400003	Valve Mounting Kit
B	X-3900005C,H	Side Valve-Cold,Hot
C	X-4900004	Supply Nut
D	X-4400063	Flex Connector Hose
E	X-4400029	T Connector & Washer
F	X-5400006	Shank Mounting Kit
G	X-5400005	Shank & Test Plug
1	X-4900022	Bonnet Nut
2	X-3900002C,H	Ceramic Stem-Cold,Hot



For more care information or trouble shooting inquiries
about your Pioneer product, please call:
Pioneer Industries, Inc. (800) 338-9468
Monday-Friday 8 AM to 8 PM EST (5 AM to 5 PM PST)
www.pioneerind.com