



S19-2010 Navigator® Thermostatic Mixing Valve for Eyewash and Faucet

- 2 valves in 1: saves on installation time and space under the sink
- One cold water inlet, one hot water inlet
- Outlet for tempered water to faucet
- Outlet for tepid water to eyewash
- Eyewash valve meets ANSI/ISEA Z358.1
- ASSE 1070 and 1071 Certified
- 1/2" NPT connections on inlet and outlet
- 3/8" compression fitting to faucet included
- Reliable liquid-filled thermostat on eyewash valve
- Reliable wax-filled thermostat for faucet valve
- Check valves on supply inlets
- Adjustable set point within temperature range
- Accurate temperature control to within $\pm 3^{\circ}\text{F}$
- Built-in cold water bypass on eyewash, assuring cold flow
- Positive shutoff of hot supply when cold supply is lost
- Dirt and lime resistant
- Factory assembled and tested
- Can be mounted in any orientation

System Specifications

Maximum Operating Pressure

125 PSI (860 kPa)

Hot Water Inlet Temperature

Maximum Temperature: 180°F (82°C)

Recommended Inlet Temperature: 120°F (49°C) to 140°F (60°C)

Faucet Valve Specifications

Temperature Range

Std. 95°F (35°C) to 120°F (49°C)

Temperature Differential - Hot to Mix

10°F (5.6°C)

Faucet Valve Flow Capacities – GPM

Mixing Center	Min. Flow	Pressure Drop – PSI							
		PSI	5	10	15	20	30	45	60
Faucet	0.2	GPM	1.4	2.0	2.5	2.9	3.5	4.3	5.0

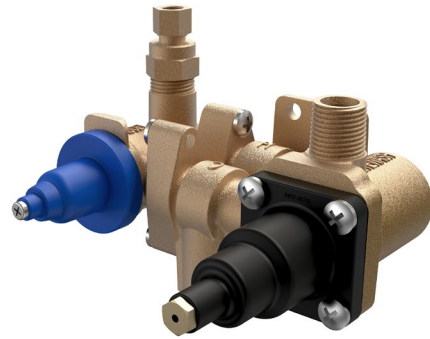
Faucet Valve Flow Capacities – L/Min

Mixing Center	Min. Flow	Pressure Drop – Bar							
		Bar	0.3	0.7	1.0	1.4	2.1	3.1	4.1
Faucet	0.8	L/Min	5.5	7.7	9.5	10.9	13.4	16.4	19.0



This plumbing fixture is not intended to dispense water for human consumption through drinking or for preparation of food or beverages.

Engineer's Approval _____



S19-2010

Valve Models (Must select one)

Model	Description
S19-2010	Brass Emergency Fixture and Faucet Thermostatic Mixing Valve
S19-2010C	Chrome-Plated Emergency Fixture and Faucet Thermostatic Mixing Valve

Eyewash Valve Specifications

Temperature Range

Std. 65°F (18°C) to 90°F (32°C)

Temperature Differential - Hot to Mix

20°F (11.1°C)

Set Point

85°F (29°C)

Eyewash Valve Flow Capacities – GPM

Mixing Center	Min. Flow	Pressure Drop – PSI							
		PSI	5	10	15	20	30	45	60
Eyewash	1.5	GPM	3.2	4.6	5.6	6.5	7.9	9.7	11.2
		Cold Bypass Only	GPM	2.5	3.5	4.3	5.0	6.1	7.4

Eyewash Valve Flow Capacities – L/Min

Mixing Center	Min. Flow	Pressure Drop – Bar							
		Bar	0.3	0.7	1.0	1.4	2.1	3.1	4.1
Eyewash	5.7	L/Min	12.3	17.3	21.2	24.5	30.0	36.8	42.5
		Cold Bypass Only	L/Min	9.4	13.3	16.2	18.8	23.0	28.1

Product Compliance

Listed by IAPMO R&T to

- ASSE 1070/ASME A112.1070/CSA B125.70
- ASSE 1071
- Uniform Plumbing Code (UPC)
- National Plumbing Code of Canada
- International Plumbing Code (IPC)



Listed by ASSE International to

- ASSE 1070
- ASSE 1071

Listed by NSF International to

- NSF/ANSI 372

Certified to NSF/ANSI 372



S19-2010 Navigator® Thermostatic Mixing Valve for Eyewash and Faucet

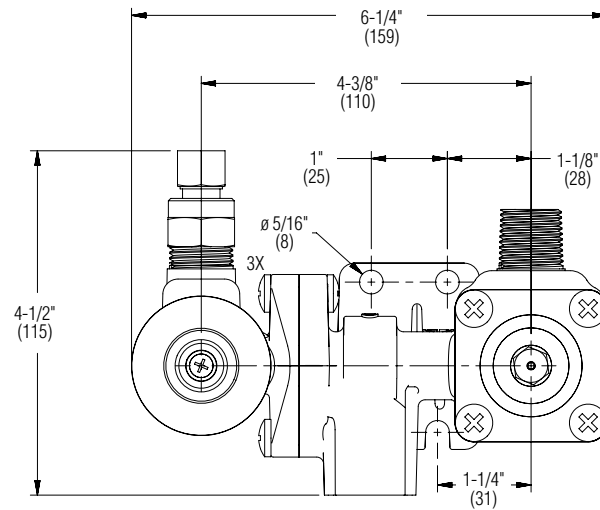
Dimensions

(mm)

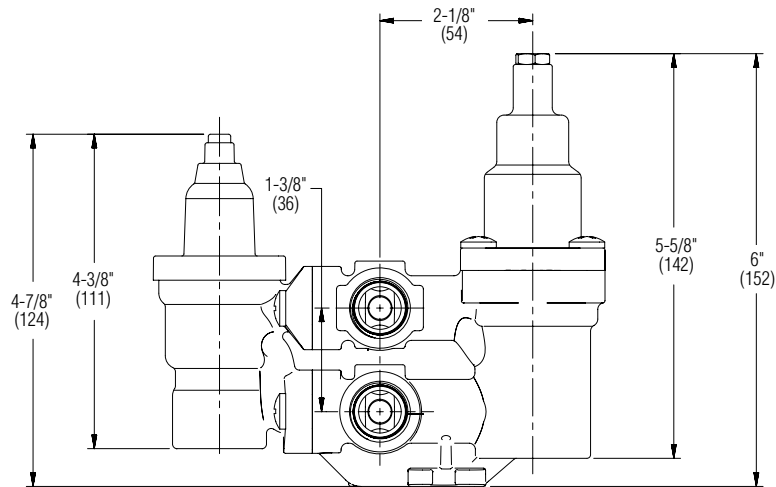
Top View



All connections 1/2" NPT.



Front View



Side View

